



Building Construction Cost Index Numbers of Tamilnadu



Quarter Ended: 30.06.2021

DEPARTMENT OF ECONOMICS AND STATISTICS

CHENNAI – 600 006



Preface

The Building Construction Cost Index report presents information based on the data collected on prices of “**Building Construction Cost Index Number**” for 16 centres in Tamil Nadu with 2011-12=100 as the base year.

The trend in the prices of Building Construction Cost Index is useful in studying the material and wage rates of building labor and in assessing the overall variation in the cost of construction over a period of time.

The National Building Organization, New Delhi is involved in the work of designing the Schedule and methodology. The prices for quarter ended 30.06.2021 were collected by the district officials of the selected 16 Centers by the Department of Economics and Statistics, Government of Tamil Nadu. The data validation, generation of tables and report writing were carried out by the officials in the Headquarters.

I am sure this report will be helpful to the Government Departments, Planners, Research Scholars and others interested in the Construction sector of the State.

Suggestions and comments are solicited from the users of this report for improving the content in the future publications.

Date : 01.03.2022

Place : Chennai

(Sd/-) Dr.M. Karunakaran,

Commissioner

CONTENTS

Chapter	Subject	Page No.
	Highlights	1-4
I	Introduction	5-7
II	Review on BCCI of 16 selected centres	8-25
III	Building Cost Index and detailed tables of 16 selected centres	26-57

HIGHLIGHTS

General:

1. The data for Building Construction Cost Index (BCCI) is collected from among 16 selected centres all over the state.
2. The data collected includes prices of Building Materials, Building Labour and Other Charges.
3. The data are collected for 74 selected items to compile index numbers for Housing unit of Tamil Nadu Housing Board for an area of 27.78 – 55.74 Sq.Mt. (300-600 Sq.Ft.)

BCCI at a glance:

a) Building Material Cost

Sl. No.	Name of the Centre	Building Material Cost		
		Previous Quarter 31.03.2021	Current Quarter 30.06.2021	Variation in Points over previous quarter (Col.4) - (Col.3)
(1)	(2)	(3)	(4)	(5)
1.	Chennai	174.40	183.49	9.09
2.	Kancheepuram	191.24	193.84	2.6
3.	Cuddalore	168.12	173.82	5.7
4.	Vellore	169.23	179.11	9.88
5.	Salem	178.83	184.50	5.67
6.	Dharmapuri	189.96	197.48	7.52
7.	Coimbatore	178.80	181.84	3.04
8.	Erode	177.91	182.66	4.75
9.	Thanjavur	163.85	171.34	7.49
10.	Pudukkottai	187.72	189.26	1.54
11.	Tiruchirappalli	216.98	225.88	8.9
12.	Madurai	164.95	176.01	11.06
13.	Virudhunagar	185.65	199.30	13.65
14.	Palayamkottai	156.42	159.48	3.06
15.	Nagercoil	171.85	179.79	7.94
16.	Udhagamandalam	150.58	169.67	19.09

b) Labour Cost

Sl. No.	Name of the Centre	Labour Cost		
		Previous Quarter 31.03.2021	Current Quarter 30.06.2021	Variation in Points over previous quarter (Col.4) - (Col.3)
(1)	(2)	(3)	(4)	(5)
1.	Chennai	177.98	185.69	7.71
2.	Kancheepuram	189.54	198.27	8.73
3.	Cuddalore	182.64	191.79	9.15
4.	Vellore	231.53	231.53	0
5.	Salem	233.06	243.39	10.33
6.	Dharmapuri	223.85	238.13	14.28
7.	Coimbatore	191.59	192.23	0.64
8.	Erode	199.40	216.91	17.51
9.	Thanjavur	182.21	185.45	3.24
10.	Pudukkottai	200.43	200.43	0
11.	Tiruchirappalli	147.50	154.48	6.98
12.	Madurai	177.53	186.65	9.12
13.	Virudhunagar	183.80	184.15	0.35
14.	Palayamkottai	183.16	191.30	8.14
15.	Nagercoil	179.94	188.27	8.33
16.	Udhagamandalam	175.04	188.77	13.73

c) Other Cost

Sl. No.	Name of the Centre	Other Cost		
		Previous Quarter 31.03.2021	Current Quarter 30.06.2021	Variation in Points over previous quarter (Col.4) - (Col.3)
(1)	(2)	(3)	(4)	(5)
1.	Chennai	184.49	192.17	7.68
2.	Kancheepuram	185.36	190.56	5.2
3.	Cuddalore	169.66	180.59	10.93
4.	Vellore	208.64	214.41	5.77
5.	Salem	191.42	197.72	6.3
6.	Dharmapuri	201.07	209.50	8.43
7.	Coimbatore	184.16	198.14	13.98
8.	Erode	181.57	193.62	12.05
9.	Thanjavur	171.22	178.75	7.53
10.	Pudukkottai	191.50	194.30	2.8
11.	Tiruchirappalli	177.66	185.94	8.28
12.	Madurai	191.26	206.69	15.43
13.	Virudhunagar	182.05	189.78	7.73
14.	Palayamkottai	158.35	162.91	4.56
15.	Nagercoil	177.53	188.17	10.64
16.	Udhagamandalam	158.30	172.66	14.36

d) Building Construction Cost Index

Sl. No.	Name of the Centre	Building Construction Cost Index		
		Previous Quarter 31.03.2021	Current Quarter 30.06.2021	Variation in Points over previous quarter (Col.4) - (Col.3)
(1)	(2)	(3)	(4)	(5)
1.	Chennai	176.81	185.28	8.47
2.	Kancheepuram	189.97	194.76	4.79
3.	Cuddalore	173.12	180.67	7.55
4.	Vellore	190.55	197.33	6.78
5.	Salem	195.55	202.60	7.05
6.	Dharmapuri	199.97	209.32	9.35
7.	Coimbatore	183.58	187.18	3.6
8.	Erode	184.18	193.33	9.15
9.	Thanjavur	170.89	176.97	6.08
10.	Pudukkottai	191.66	192.95	1.29
11.	Tiruchirappalli	189.00	197.19	8.19
12.	Madurai	172.20	183.22	11.02
13.	Virudhunagar	184.62	193.40	8.78
14.	Palayamkottai	164.64	169.41	4.77
15.	Nagercoil	175.52	183.98	8.46
16.	Udhagamandalam	158.80	175.69	16.89

Chapter - 1

INTRODUCTION

A building cost index series can show the trends in the building construction costs at specified centre over a period of time. The building construction costs, however, vary with the type of construction, design, region etc. Index is always time and place specific. Therefore, in order to study the variations in building construction costs in the country, it is necessary to compile the building costs index numbers for well-demarked regions within which the design, construction techniques and materials used are uniformly similar. Also different series will have to be maintained for different types of buildings such as residential buildings, institutional buildings, commercial buildings etc.

The State Statistical Bureau compiles these indices for the regions falling in their States on a quarterly basis. As a first step, the index numbers of building costs for residential constructions are compiled and they are compiled for one principal town in each State-preferably the State Capital City.

Objectives:

The object of the scheme is to collect the data on prices of important building materials and wage rates of “Building Labour” on quarterly basis and compilation of “Building Construction Cost Index Number” for 16 centres with 2011-12=100 as the base year.

Coverage:

The prices of building materials and wages of Building Labour are collected in 16 important centres in Tamil Nadu viz. Chennai, Kancheepuram, Cuddalore, Vellore, Salem, Dharmapuri, Coimbatore, Erode, Thanjavur, Trichy, Madurai, Pudukkottai, Virudhunagar, Palayamkottai, Nagercoil and Udagamandalam.

Methodology:

The following are the broad guidelines to be followed in the compilation of these index numbers.

I. The building construction costs vary with the type of construction, design, region etc. In order to study the variations in building construction costs in the State, it is necessary to compile the building cost index numbers for well demarcated regions within which the design, construction techniques and materials used are uniformly similar.

II. The index may relate to a typical, popular, common type of residential structure constructed in the public sector under the Low Income Group Housing Scheme by the State Housing Board or under the scheme for the low paid Government employees by the State Public Works Department.

III. The year 2011-12=100 may be taken as the base year (base year may change according to national income estimates).

IV. The index consists of three Components, i.e. material, labour and other charges.

Material Bricks, sand aggregate, cement, iron and steel, timber, sanitary wares and water supply fittings and electrical fittings are to be included in the material group.

Labour the wages for mason, carpenter and unskilled labour

Other charges include Architects fee, corporation fee, contingency etc.

V. Retail prices inclusive of taxes, transport charges (imputed), if necessary, are to be used for the compilation of the index.

VI. Weights are to be assigned to each item included in the index in proportion of their expenditure to the total cost.

VII. The index numbers compiled using the weighted Arithmetic Mean Method.

The index has to have a base with which the change in price level during any subsequent period compared. The weighted arithmetic average method is used for the computation of the index. For each variety of material / labour the price relative is computed by dividing the current rate by the corresponding base period rate. The weighted arithmetic average of the price relatives of the varieties is taken as the material / labour index. The weighted arithmetic average of these material and labour indices is the general building cost index.

B.C.C.Index Symbolically, Building construction cost Index

$$\text{Index} = \frac{\sum_j W_{ij} * P_j}{\sum_j W_{ij}} * 100$$

W_{ij} is the weight of the item in the total building cost

P_j is the relative Cost of the item (current/constant cost)

The weighting diagram is based on the proportion of expenditure incurred on each item in relation to the total construction costs in building construction in the base year.

Uses of data:

The trend in the prices of Building report is very useful to study the materials and wage rates of Building Labour and estimation of the overall variation in the cost of construction over a period of time.

The data generated have been formed to be quite useful for Planning and Budgeting. The results are utilized by National Buildings Organisation, New Delhi for various purposes.

The Planning Commission uses these data for working out perspective housing projections and in estimating employment potential in various projects included in the plan.

Chapter -II

REVIEW ON BUILDING CONSTRUCTION COST INDEX NUMBER

CENTRE: CHENNAI

The Building Construction Cost Index Number of Chennai Centre for the quarter ended 30.06.2021 exhibits a boost of 8.47 points from 176.81 to 185.28 points, when compared to the previous quarter 31.03.2021. The arise of 9.09 points in Building material Cost, 7.71 points in labour cost and 7.68 points in other charges has reflected in Building Construction Cost Index. The evidence for shoot up of Building construction cost is due to hike in the prices of 5 amps 5 pin at switch board itself since price fixed by manufacture is raised.

Quarter Ended: 30.06.2021
Base Year: 2011-2012=100

Sl. No.	Item	Weightage (Proportional to total cost of Building Construction)	Group Indices for the quarter ended		Percentage variation over previous quarter	Variation in Points over previous quarter (Col.5) - (Col.4)
			Previous Quarter 31.03.2021	Current Quarter 30.06.2021		
(1)	(2)	(3)	(4)	(5)	(6)	(7)
1	Building Material Cost	54.82	174.40	183.49	5.21	9.09
2	Labour Cost	32.94	177.98	185.69	4.33	7.71
3	Other Charges	12.24	184.49	192.17	4.16	7.68
4	Building Cost Index	100	176.81	185.28	4.79	8.47

The Index Number for the quarter ended 30.06.2021 were compiled for an area of 27.78 – 55.74 Sq.Mt. (300-600 Sq.Ft.) of Housing unit of Tamil Nadu Housing Board.

REVIEW ON BUILDING CONSTRUCTION COST INDEX NUMBER

CENTRE: KANCHEEPURAM

The Building Construction Cost Index Number for Kancheepuram Centre for the quarter ended 30.06.2021 shows an augment of 4.79 points from 189.97 to 194.76 points, when compared to the previous quarter 31.03.2021. The increase of 2.6 points in Building material Cost, 8.73 points in Labour Cost and 5.2 points in other charges are indicated in Building Construction Cost Index. The increase in the subgroups Ancilliary Materials, Electrical Fittings and Iron & Steel have raised the Material cost. In the sub group skilled labour have raised the labour cost. The increase in the subgroup E.B. Service connection charges have raised the Other Expenses group.

Quarter Ended: 30.06.2021

Base Year: 2011-2012=100

Sl. No.	Item	Weightage (Proportional to total cost of Building Construction)	Group Indices for the quarter ended		Percentage variation over previous quarter	Variation in Points over previous quarter (Col.5)- (Col.4)
			Previous Quarter 31.03.2021	Current Quarter 30.06.2021		
(1)	(2)	(3)	(4)	(5)	(6)	(7)
1	Building Material Cost	57.04	191.24	193.84	1.36	2.6
2	Labour Cost	30.16	189.54	198.27	4.61	8.73
3	Other Charges	12.80	185.36	190.56	2.81	5.2
4	Building Cost Index	100	189.97	194.76	2.52	4.79

The Index Number for the quarter ended 30.06.2021 were compiled for an area of 27.78 – 55.74 Sq.Mt. (300-600 Sq.Ft.) of Housing unit of Tamil Nadu Housing Board.

REVIEW ON BUILDING CONSTRUCTION COST INDEX NUMBER

CENTRE: CUDDALORE

The Building Construction Cost Index Number of Cuddalore Centre for the quarter ended 30.06.2021 indicates raise of 7.55 points from 173.12 to 180.67, when compared to the previous quarter (31.03.2021). The increase of 5.7 points in Building material Cost, 9.15 points in Labour Cost and 10.93 points in other charges are indicated in Building Construction Cost Index. The increase in the subgroups Ancilliary Materials and Iron & Steel have raised the Material cost. In the sub group unskilled labour have raised the labour cost. The increase in the subgroup mixing charges have raised the Other Expenses group.

Quarter Ended: 30.06.2021
Base Year: 2011-2012=100

Sl. No.	Item	Weightage (Proportional to total cost of Building Construction)	Group Indices for the quarter ended		Percentage variation over previous quarter	Variation in Points over previous quarter (Col.5)- (Col.4)
			Previous Quarter 31.03.2021	Current Quarter 30.06.2021		
(1)	(2)	(3)	(4)	(5)	(6)	(7)
1	Building Material Cost	53.36	168.12	173.82	3.39	5.7
2	Labour Cost	32.97	182.64	191.79	5.01	9.15
3	Other Charges	13.67	169.66	180.59	6.44	10.93
4	Building Cost Index	100	173.12	180.67	4.36	7.55

The Index Number for the quarter ended 30.06.2021 were compiled for an area of 27.78 – 55.74 Sq.Mt. (300-600 Sq.Ft.) of Housing unit of Tamil Nadu Housing Board.

REVIEW ON BUILDING CONSTRUCTION COST INDEX NUMBER

CENTRE: VELLORE

The Building Construction Cost Index Number of Vellore Centre for the quarter ended 30.06.2021 indicates raise of 6.78 points from 190.55 to 197.33 when compared to the previous quarter (31.03.2021). The increase of 9.88 points in Building material Cost and 5.77 points in other charges are indicated in Building Construction Cost Index. The increase in the subgroups Sand, Stone & other quarry products, Sanitary ware & water supply and Ancillary Materials have raised the Material cost. The increase in the subgroup contingencies and supervision charges have raised the Other Expenses group.

Quarter Ended: 30.06.2021

Base Year: 2011-2012=100

Sl. No.	Item	Weightage (Proportional to total cost of Building Construction)	Group Indices for the quarter ended		Percentage variation over previous quarter	Variation in Points over previous quarter (Col.5)- (Col.4)
			Previous Quarter 31.03.2021	Current Quarter 30.06.2021		
(1)	(2)	(3)	(4)	(5)	(6)	(7)
1	Building Material Cost	60.66	169.23	179.11	5.84	9.88
2	Labour Cost	26.02	231.53	231.53	0.00	0
3	Other Charges	13.32	208.64	214.41	2.77	5.77
4	Building Cost Index	100	190.55	197.33	3.56	6.78

The Index Number for the quarter ended 30.06.2021 were compiled for an area of 27.78 – 55.74 Sq.Mt. (300-600 Sq.Ft.) of Housing unit of Tamil Nadu Housing Board.

REVIEW ON BUILDING CONSTRUCTION COST INDEX NUMBER

CENTRE: SALEM

The Building Construction Cost Index Number of Salem Centre for the quarter ended 30.06.2021 indicates raise of 7.05 points from 195.55 to 202.60, when compared to the previous quarter (31.03.2021). The increase of 5.67 points in Building material Cost, 10.33 points in Labour Cost and 6.3 points in other charges are indicated in Building Construction Cost Index. The increase in the subgroups Ancilliary Materials, Bricks & Tiles and Iron & Steel have raised the Material cost. In the sub group unskilled labour have raised the labour cost. The increase in the subgroup Contingencies and Supervision charges have raised the Other Expenses group.

Quarter Ended: 30.06.2021

Base Year: 2011-2012=100

Sl. No.	Item	Weightage (Proportional to total cost of Building Construction)	Group Indices for the quarter ended		Percentage variation over previous quarter	Variation in Points over previous quarter (Col.5)-(Col.4)
			Previous Quarter 31.03.2021	Current Quarter 30.06.2021		
(1)	(2)	(3)	(4)	(5)	(6)	(7)
1	Building Material Cost	59.50	178.83	184.50	3.17	5.67
2	Labour Cost	27.81	233.06	243.39	4.43	10.33
3	Other Charges	12.69	191.42	197.72	3.29	6.3
4	Building Cost Index	100	195.55	202.60	3.61	7.05

The Index Number for the quarter ended 30.06.2021 were compiled for an area of 27.78 – 55.74 Sq.Mt. (300-600 Sq.Ft.) of Housing unit of Tamil Nadu Housing Board.

REVIEW ON BUILDING CONSTRUCTION COST INDEX NUMBER

CENTRE: DHARMAPURI

The Building Construction Cost Index Number of Dharmapuri Centre for the quarter ended 30.06.2021 indicates raise of 9.35 points from 199.97 to 209.32, when compared to the previous quarter (31.03.2021). The increase of 7.52 points in Building material Cost, 14.28 points in Labour Cost and 8.43 points in other charges are indicated in Building Construction Cost Index. The increase in the subgroups Sanitary ware & water supply, Electrical fittings and Sand, Stone & other quarry products have raised the Material cost. In the sub group unskilled labour have raised the labour cost. The increase in the subgroup Contingencies and Supervision charges have raised the Other Expenses group.

Quarter Ended: 30.06.2021
Base Year: 2011-2012=100

Sl. No.	Item	Weightage (Proportional to total cost of Building Construction)	Group Indices for the quarter ended		Percentage variation over previous quarter	Variation in Points over previous quarter (Col.5)- (Col.4)
			Previous Quarter 31.03.2021	Current Quarter 30.06.2021		
(1)	(2)	(3)	(4)	(5)	(6)	(7)
1	Building Material Cost	55.54	189.96	197.48	3.96	7.52
2	Labour Cost	32.27	223.85	238.13	6.38	14.28
3	Other Charges	12.19	201.07	209.50	4.19	8.43
4	Building Cost Index	100	199.97	209.32	4.68	9.35

The Index Number for the quarter ended 30.06.2021 were compiled for an area of 27.78 – 55.74 Sq.Mt. (300-600 Sq.Ft.) of Housing unit of Tamil Nadu Housing Board.

REVIEW ON BUILDING CONSTRUCTION COST INDEX NUMBER

CENTRE: COIMBATORE

The Building Construction Cost Index Number of Coimbatore Centre for the quarter ended 30.06.2021 indicates raise of 3.6 points from 183.58 to 187.18 when compared to the previous quarter (31.03.2021). The increase of 3.04 points in Building material Cost, 0.64 points in Labour Cost and 13.98 points in other charges are indicated in Building Construction Cost Index. The increase in the subgroups Timber & other woods, Bricks & Tiles and Cement & Lime have raised the Material cost. In the sub group skilled and unskilled labour have slightly raised the labour cost. The increase in the subgroup mixing charges have raised the Other Expenses group.

Quarter Ended: 30.06.2021
Base Year: 2011-2012=100

Sl. No.	Item	Weightage (Proportional to total cost of Building Construction)	Group Indices for the quarter ended		Percentage variation over previous quarter	Variation in Points over previous quarter (Col.5)- (Col.4)
			Previous Quarter 31.03.2021	Current Quarter 30.06.2021		
(1)	(2)	(3)	(4)	(5)	(6)	(7)
1	Building Material Cost	55.54	178.80	181.84	1.70	3.04
2	Labour Cost	32.27	191.59	192.23	0.33	0.64
3	Other Charges	12.19	184.16	198.14	7.59	13.98
4	Building Cost Index	100	183.58	187.18	1.96	3.6

The Index Number for the quarter ended 30.06.2021 were compiled for an area of 27.78 – 55.74 Sq.Mt. (300-600 Sq.Ft.) of Housing unit of Tamil Nadu Housing Board.

REVIEW ON BUILDING CONSTRUCTION COST INDEX NUMBER

CENTRE: ERODE

The Building Construction Cost Index Number of Erode Centre for the quarter ended 30.06.2021 indicates raise of 9.15 points from 184.18 to 193.33 when compared to the previous quarter (31.03.2021). The increase of 4.75 points in Building material Cost, 17.51 points in Labour Cost and 12.05 points in other charges are indicated in Building Construction Cost Index. The increase in the subgroups Cement & Lime, Bricks & Tiles and Sanitary ware & Water supply have raised the Material cost. In the sub group skilled and unskilled labour have raised the labour cost. The increase in the subgroup mixing charges have raised the Other Expenses group.

Quarter Ended: 30.06.2021
Base Year: 2011-2012=100

Sl. No.	Item	Weightage (Proportional to total cost of Building Construction)	Group Indices for the quarter ended		Percentage variation over previous quarter	Variation in Points over previous quarter (Col.5)- (Col.4)
			Previous Quarter 31.03.2021	Current Quarter 30.06.2021		
(1)	(2)	(3)	(4)	(5)	(6)	(7)
1	Building Material Cost	59.92	177.91	182.66	2.67	4.75
2	Labour Cost	26.96	199.40	216.91	8.78	17.51
3	Other Charges	13.12	181.57	193.62	6.64	12.05
4	Building Cost Index	100	184.18	193.33	4.97	9.15

The Index Number for the quarter ended 30.06.2021 were compiled for an area of 27.78 – 55.74 Sq.Mt. (300-600 Sq.Ft.) of Housing unit of Tamil Nadu Housing Board.

REVIEW ON BUILDING CONSTRUCTION COST INDEX NUMBER

CENTRE: THANJAVUR

The Building Construction Cost Index Number of Thanjavur Centre for the quarter ended 30.06.2021 indicates raise of 6.08 points from 170.89 to 176.97 when compared to the previous quarter (31.03.2021). The increase of 7.49 points in Building material Cost, 3.24 points in Labour Cost and 7.53 points in other charges are indicated in Building Construction Cost Index. The increase in the subgroups Ancilliary Materials, Cement & Lime and Sand, Stone & Other Quarry Products have raised the Material cost. In the sub group skilled and unskilled labour have raised the labour cost. The increase in the subgroup mixing charges, Contingencies and Supervision charges have raised the Other Expenses group.

Quarter Ended: 30.06.2021
Base Year: 2011-2012=100

Sl. No.	Item	Weightage (Proportional to total cost of Building Construction)	Group Indices for the quarter ended		Percentage variation over previous quarter	Variation in Points over previous quarter (Col.5)- (Col.4)
			Previous Quarter 31.03.2021	Current Quarter 30.06.2021		
(1)	(2)	(3)	(4)	(5)	(6)	(7)
1.	Building Material Cost	53.87	163.85	171.34	4.57	7.49
2	Labour Cost	33.11	182.21	185.45	1.78	3.24
3	Other Charges	13.02	171.22	178.75	4.40	7.53
4	Building Cost Index	100	170.89	176.97	3.56	6.08

The Index Number for the quarter ended 30.06.2021 were compiled for an area of 27.78 – 55.74 Sq.Mt. (300-600 Sq.Ft.) of Housing unit of Tamil Nadu Housing Board.

REVIEW ON BUILDING CONSTRUCTION COST INDEX NUMBER

CENTRE: PUDUKKOTTAI

The Building Construction Cost Index Number of Pudukottai Centre for the quarter ended 30.06.2021 indicates raise of 1.29 points from 191.66 to 192.95 when compared to the previous quarter (31.03.2021). The increase of 1.54 points in Building material Cost and 2.8 points in other charges are indicated in Building Construction Cost Index. The increase in the subgroups Electrical Fittings and Cement Lime and Timber & Other woods have raised the Material cost. The increase in the subgroup mixing charges, E.B. Service connection charges have raised the Other Expenses group.

Quarter Ended: 30.06.2021
Base Year: 2011-2012=100

Sl. No.	Item	Weightage (Proportional to total cost of Building Construction)	Group Indices for the quarter ended		Percentage variation over previous quarter	Variation in Points over previous quarter (Col.5)- (Col.4)
			Previous Quarter 31.03.2021	Current Quarter 30.06.2021		
(1)	(2)	(3)	(4)	(5)	(6)	(7)
1	Building Material Cost	59.62	187.72	189.26	0.82	1.54
2	Labour Cost	27.05	200.43	200.43	0.00	0
3	Other Charges	13.33	191.50	194.30	1.46	2.8
4	Building Cost Index	100	191.66	192.95	0.67	1.29

The Index Number for the quarter ended 30.06.2021 were compiled for an area of 27.78 – 55.74 Sq.Mt. (300-600 Sq.Ft.) of Housing unit of Tamil Nadu Housing Board.

REVIEW ON BUILDING CONSTRUCTION COST INDEX NUMBER

CENTRE: TIRUCHIRAPPALLI

The Building Construction Cost Index Number of Tiruchirappalli Centre for the quarter ended 30.06.2021 indicates raise of 8.19 points from 189.00 to 197.19 when compared to the previous quarter (31.03.2021). The increase of 8.9 points in Building material Cost, 6.98 points in Labour Cost and 8.28 points in other charges are indicated in Building Construction Cost Index. The increase in the subgroups Sanitary Ware & Water supply, Cement & Lime and Bricks & Tiles and Sanitary ware & Water supply have raised the Material cost. In the sub group skilled labour have raised the labour cost. The increase in the subgroup mixing charges, Contingencies and Supervision charges have raised the Other Expenses group.

Quarter Ended: 30.06.2021
Base Year: 2011-2012=100

Sl. No.	Item	Weightage (Proportional to total cost of Building Construction)	Group Indices for the quarter ended		Percentage variation over previous quarter	Variation in Points over previous quarter (Col.5)- (Col.4)
			Previous Quarter 31.03.2021	Current Quarter 30.06.2021		
(1)	(2)	(3)	(4)	(5)	(6)	(7)
1	Building Material Cost	53.78	216.98	225.88	4.10	8.9
2	Labour Cost	32.51	147.50	154.48	4.73	6.98
3	Other Charges	13.72	177.66	185.94	4.66	8.28
4	Building Cost Index	100	189.00	197.19	4.33	8.19

The Index Number for the quarter ended 30.06.2021 were compiled for an area of 27.78 – 55.74 Sq.Mt. (300-600 Sq.Ft.) of Housing unit of Tamil Nadu Housing Board.

REVIEW ON BUILDING CONSTRUCTION COST INDEX NUMBER

CENTRE: MADURAI

The Building Construction Cost Index Number of Madurai Centre for the quarter ended 30.06.2021 indicates raise of 11.02 points from 172.20 to 183.22 when compared to the previous quarter (31.03.2021). The increase of 11.06 points in Building material Cost, 9.12 points in Labour Cost and 15.43 points in other charges are indicated in Building Construction Cost Index. The increase in the subgroups Ancillary Materials, Sanitary ware & Water supply and Bricks & Tiles have raised the Material cost. In the sub group skilled and unskilled labour have raised the labour cost. The increase in the subgroup mixing charges, Contingencies and Supervision charges have raised the Other Expenses group.

Quarter Ended: 30.06.2021

Base Year: 2011-2012=100

Sl. No.	Item	Weightage (Proportional to total cost of Building Construction)	Group Indices for the quarter ended		Percentage variation over previous quarter	Variation in Points over previous quarter (Col.5)- (Col.4)
			Previous Quarter 31.03.2021	Current Quarter 30.06.2021		
(1)	(2)	(3)	(4)	(5)	(6)	(7)
1	Building Material Cost	56.39	164.95	176.01	6.71	11.06
2	Labour Cost	30.79	177.53	186.65	5.14	9.12
3	Other Charges	12.82	191.26	206.69	8.07	15.43
4	Building Cost Index	100	172.20	183.22	6.40	11.02

The Index Number for the quarter ended 30.06.2021 were compiled for an area of 27.78Sq.Mt. (300 Sq.Ft.) of Housing unit of Tamil Nadu Housing Board.

REVIEW ON BUILDING CONSTRUCTION COST INDEX NUMBER

CENTRE :VIRUDHUNAGAR

The Building Construction Cost Index Number of Virudhunagar Centre for the quarter ended 30.06.2021 indicates raise of 8.78 points from 184.62 to 193.40 when compared to the previous quarter (31.03.2021). The increase of 13.65 points in Building material Cost, 0.35 points in Labour Cost and 7.73 points in other charges are indicated in Building Construction Cost Index. The increase in the subgroups Sand, Stone & Other Quarry Products, Electrical Fittings and Iron & Steel have raised the Material cost. In the sub group skilled labour have raised the labour cost. The increase in the subgroup E.B. Service connection charges, contingencies and supervision charges have raised the Other Expenses group.

Quarter Ended: 30.06.2021

Base Year: 2011-2012=100

Sl. No.	Item	Weightage (Proportional to total cost of Building Construction)	Group Indices for the quarter ended		Percentage variation over previous quarter	Variation in Points over previous quarter (Col.5)- (Col.4)
			Previous Quarter 31.03.2021	Current Quarter 30.06.2021		
(1)	(2)	(3)	(4)	(5)	(6)	(7)
1	Building Material Cost	56.23	185.65	199.30	7.35	13.65
2	Labour Cost	30.90	183.80	184.15	0.19	0.35
3	Other Charges	12.87	182.05	189.78	4.25	7.73
4	Building Cost Index	100	184.62	193.40	4.76	8.78

The Index Number for the quarter ended 30.06.2021 were compiled for an area of 27.78 – 55.74 Sq.Mt. (300-600 Sq.Ft.) of Housing unit of Tamil Nadu Housing Board.

REVIEW ON BUILDING CONSTRUCTION COST INDEX NUMBER

CENTRE: PALAYAMKOTTAI

The Building Construction Cost Index Number of Palayamkottai Centre for the quarter ended 30.06.2021 indicates raise of 4.77 points from 164.64 to 169.41 when compared to the previous quarter (31.03.2021). The increase of 3.06 points in Building material Cost, 8.14 points in Labour Cost and 4.56 points in other charges are indicated in Building Construction Cost Index. The increase in the subgroups Sanitary ware & Water supply, Ancilliary Materials and Bricks & Tiles and have raised the Material cost. In the sub group skilled and unskilled labour have raised the labour cost. The increase in the subgroup mixing charges, contingencies and supervision charges have raised the Other Expenses group.

Quarter Ended: 30.06.2021
Base Year: 2011-2012=100

Sl. No.	Item	Weightage (Proportional to total cost of Building Construction)	Group Indices for the quarter ended		Percentage variation over previous quarter	Variation in Points over previous quarter (Col.5)- (Col.4)
			Previous Quarter 31.03.2021	Current Quarter 30.06.2021		
(1)	(2)	(3)	(4)	(5)	(6)	(7)
1	Building Material Cost	57.32	156.42	159.48	1.96	3.06
2	Labour Cost	29.82	183.16	191.30	4.44	8.14
3	Other Charges	12.83	158.35	162.91	2.88	4.56
4	Building Cost Index	100	164.64	169.41	2.90	4.77

The Index Number for the quarter ended 30.06.2021 were compiled for an area of 27.78 – 55.74 Sq.Mt. (300-600 Sq.Ft.) of Housing unit of Tamil Nadu Housing Board.

REVIEW ON BUILDING CONSTRUCTION COST INDEX NUMBER

CENTRE: NAGERCOIL

The Building Construction Cost Index Number of Nagercoil Centre for the quarter ended 30.06.2021 indicates raise of 8.46 points from 175.52 to 183.98 when compared to the previous quarter (31.03.2021). The increase of 7.94 points in Building material Cost, 8.33 points in Labour Cost and 10.64 points in other charges are indicated in Building Construction Cost Index. The increase in the subgroups Electrical Fittings, Bricks & Tiles and Sanitary Ware & Water supply have raised the Material cost. In the sub group skilled and unskilled labour have slightly raised the labour cost. The increase in the subgroup mixing charges, E.B. Service connection charges, contingencies and supervision charges have raised the Other Expenses group.

Quarter Ended: 30.06.2021
Base Year: 2011-2012=100

Sl. No.	Item	Weightage (Proportional to total cost of Building Construction)	Group Indices for the quarter ended		Percentage variation over previous quarter	Variation in Points over previous quarter (Col.5)- (Col.4)
			Previous Quarter 31.03.2021	Current Quarter 30.06.2021		
(1)	(2)	(3)	(4)	(5)	(6)	(7)
1	Building Material Cost	50.44	171.85	179.79	4.62	7.94
2	Labour Cost	35.60	179.94	188.27	4.63	8.33
3	Other Charges	13.96	177.53	188.17	5.99	10.64
4	Building Cost Index	100	175.52	183.98	4.82	8.46

The Index Number for the quarter ended 30.06.2021 were compiled for an area of 27.78 – 55.74 Sq.Mt. (300-600 Sq.Ft.) of Housing unit of Tamil Nadu Housing Board.

REVIEW ON BUILDING CONSTRUCTION COST INDEX NUMBER

CENTRE: UDHAGAMANDALAM

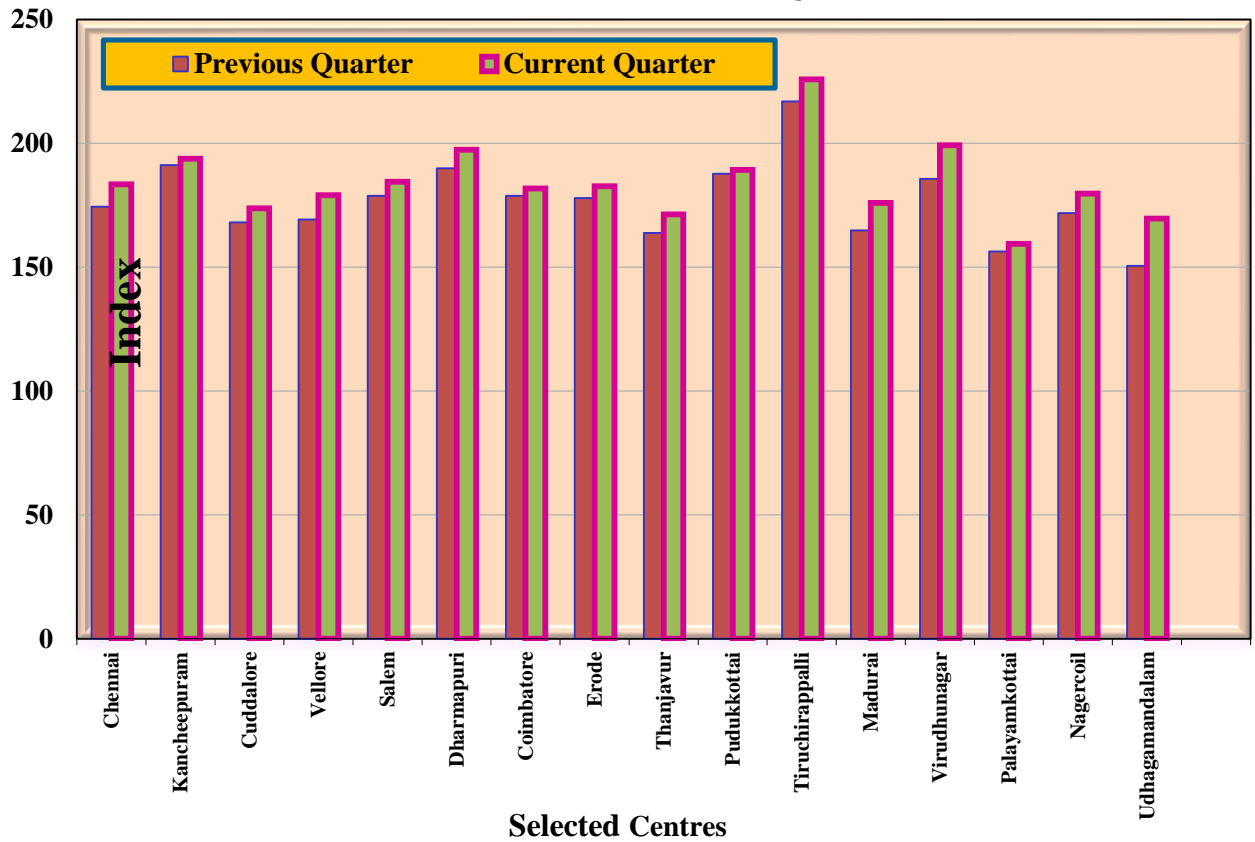
The Building Construction Cost Index Number of Udhagamandalam Centre for the quarter ended 30.06.2021 indicates raise of 16.89 points from 158.80 to 175.69 when compared to the previous quarter (31.03.2021). The increase of 19.09 points in Building material Cost, 13.73 points in Labour Cost and 14.36 points in other charges are indicated in Building Construction Cost Index. The increase in the subgroups Timber & Other woods, Sanitary ware & water supply and Bricks & Tiles have raised the Material cost. In the sub group skilled and unskilled labour have slightly raised the labour cost. The increase in the subgroup E.B. service connection charges, contingencies and supervision charges have raised the Other Expenses group.

Quarter Ended: 30.06.2021
Base Year: 2011-2012=100

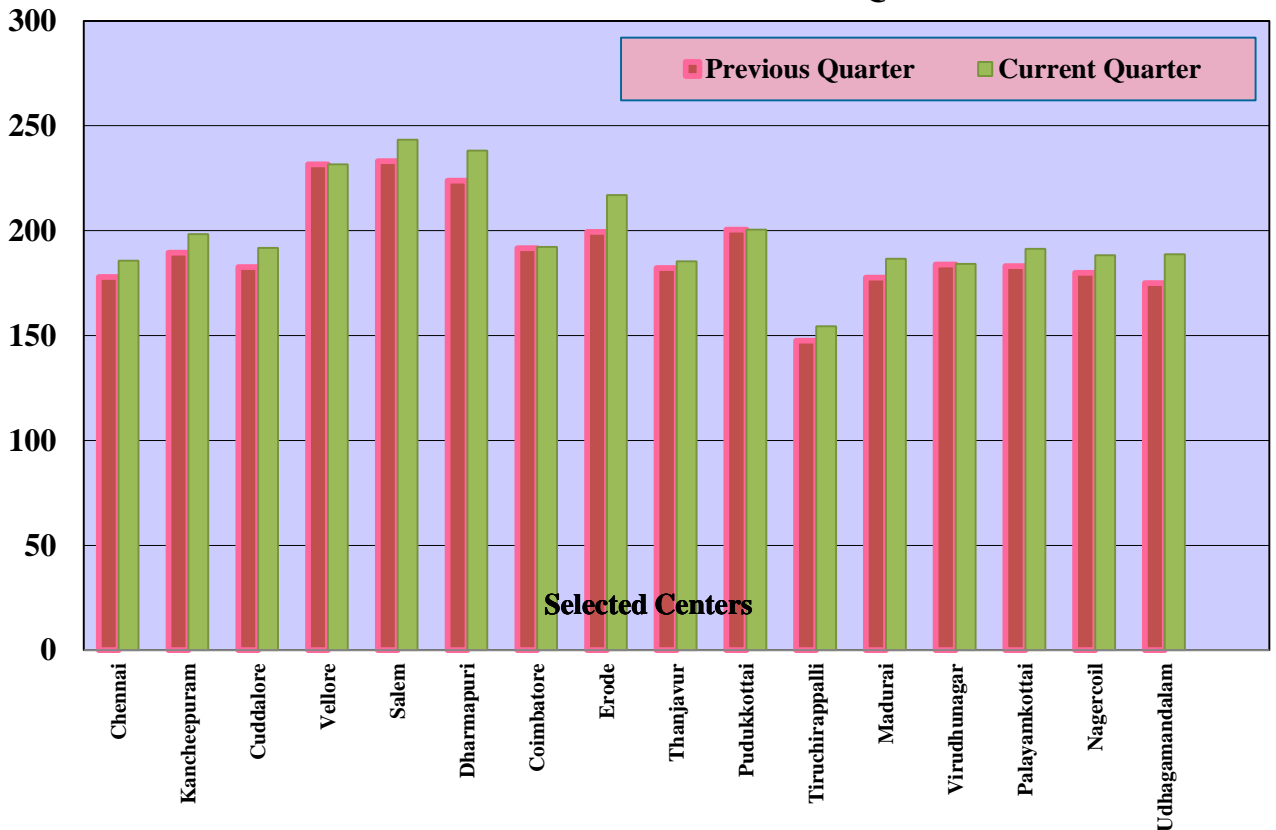
Sl. No.	Item	Weightage (Proportional to total cost of Building Construction)	Group Indices for the quarter ended		Percentage variation over previous quarter	Variation in Points over previous quarter (Col.5)- (Col.4)
			Previous Quarter 31.03.2021	Current Quarter 30.06.2021		
(1)	(2)	(3)	(4)	(5)	(6)	(7)
1	Building Material Cost	57.77	150.58	169.67	12.68	19.09
2	Labour Cost	28.98	175.04	188.77	7.84	13.73
3	Other Charges	13.25	158.30	172.66	9.07	14.36
4	Building Cost Index	100	158.80	175.69	10.64	16.89

The Index Number for the quarter ended 30.06.2021 were compiled for an area of 27.78 – 55.74 Sq.Mt. (300-600 Sq.Ft.) of Housing unit of Tamil Nadu Housing Board.

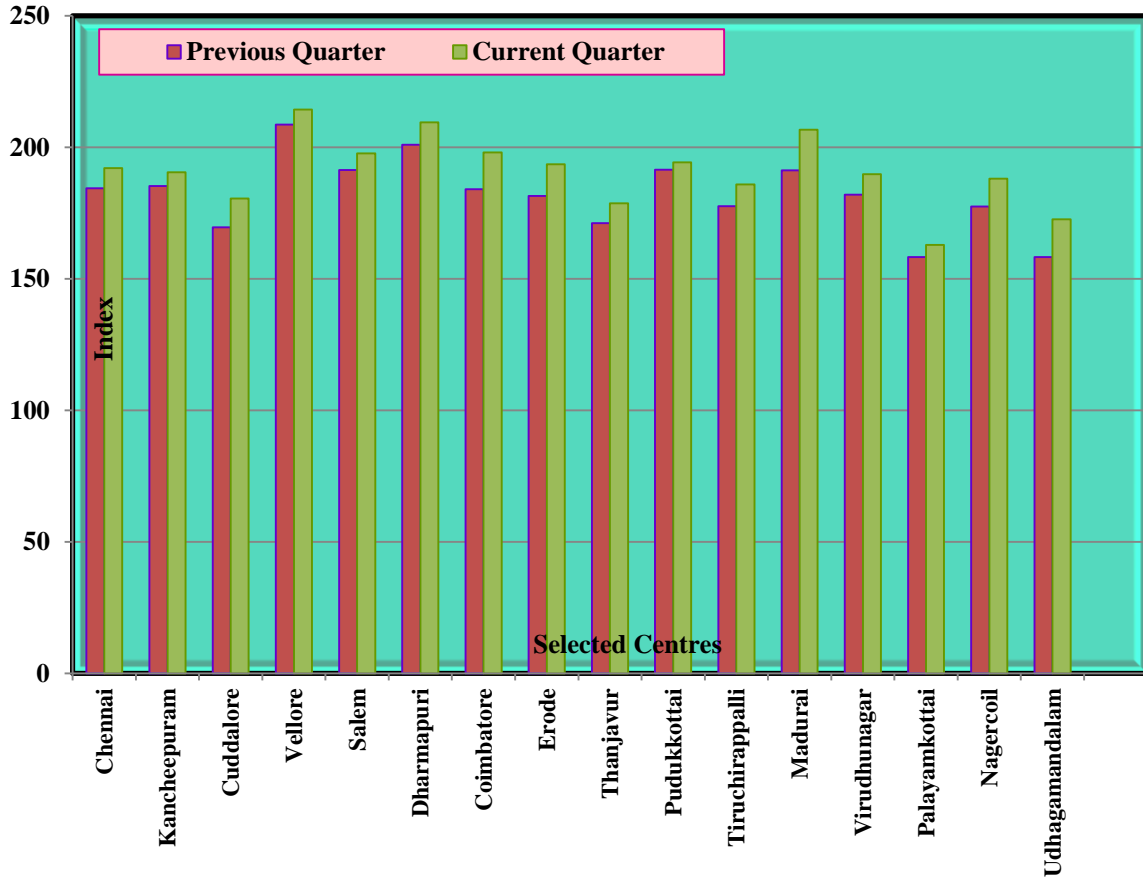
**COMPARISON OF MATERIAL COST FOR THE Q.E.
30.06.2021 WITH PREVIOUS Q.E. 31.03.2021**



**COMPARISON OF LABOUR COST FOR THE Q.E.
30.06.2021 WITH PREVIOUS Q.E. 31.03.2021**



**COMPARISON OF OTHER COST FOR THE Q.E.
30.06.2021 WITH PREVIOUS Q.E. 31.03.2021**



**COMPARISON OF BUILDING
CONSTRUCTION COST INDEX FOR THE Q.E.
30.06.2021 WITH PREVIOUS Q.E. 31.03.2021**

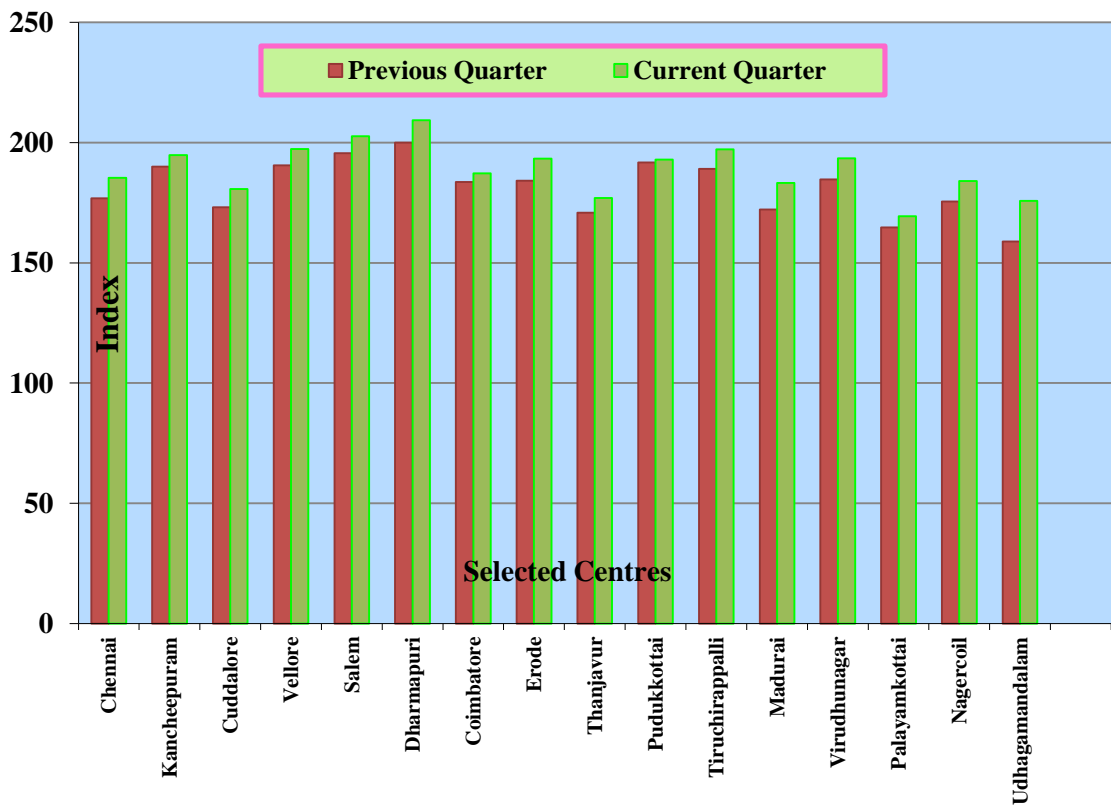


TABLE - 1A
BUILDING CONSTRUCTION COST INDEX

Centre : Chennai

Item-wise Cost relative

Quarter : June 2021
(Base year: 2011-12=100)

Sl. No.	Item	Specification	Unit	Weight	COST RELATIVE			% Variation	
					Current Quarter June 2021	Previous Quarter March 2021	Corresponding Qtr. of prev. year June 2020	Previous Quarter March 2021	Corresponding Qtr. of prev. year June 2020
I. Material cost									
1.Bricks and Tiles									
1	Bricks	9"x4.5"x2.25"	1000 Nos.	18.07	147.29	139.53	124.03	5.56	18.75
2	Brick Jelly	20mm	cu.m	0.73	174.29	174.29	162.96	0.00	6.95
3	Pressed Tiles	9"x9"	1000 Nos.	1.30	176.47	164.71	141.18	7.14	25.00
4	Glazes tiles	9"x9"	1 No.	0.10	391.85	391.85	376.18	0.00	4.17
5	Ceramic tiles	9"x9"	1 No.	0.74	266.11	266.11	252.10	0.00	5.56
2.Sand stone and other Quarry Products									
6	Sand for mortar	River	cu.m	4.44	413.29	400.00	386.63	3.32	6.89
7	Stone Jelly (HBSJ)	40mm	cu.m	4.28	185.06	148.15	148.05	24.91	25.00
8	Stone Jelly (HBSJ)	20mm	cu.m	0.37	166.74	155.61	155.61	7.15	7.15
9	Stone Jelly Chips (HBSJ)	10mm	cu.m	1.50	162.74	162.74	162.74	0.00	0.00
10	Rough stone		cu.m	0.40	152.66	142.37	142.37	7.23	7.23
11	Bond stone		cu.m	0.55	160.60	155.10	155.10	3.55	3.55
3.Cement and Lime									
12	Cement		M.T	11.02	151.90	148.52	145.15	2.27	4.65
13	Lime stone		cu.m	0.22	205.91	171.59	120.11	20.00	71.43
4.Timber and other wood									
14	TW Frame		sq.m	1.23	277.19	277.19	277.19	0.00	0.00
15	TW Panel door shutter		sq.m	0.54	159.66	159.66	144.67	0.00	10.36
16	Solid PVC door shutter		sq.m	0.30	209.30	209.30	186.05	0.00	12.50
5.Iron and Steel									
17	Mild Steel Rods	10mm	MT	1.20	149.63	149.63	119.70	0.00	25.00
18	Ribbed Tar Steel (RTS)	8mm	MT	1.97	148.75	148.75	124.84	0.00	19.15
19	Binding Wire		Kg	0.40	151.60	146.12	120.55	3.75	25.76
20	Door catch		No.	0.03	121.67	121.67	110.00	0.00	10.61
21	Hold fast		No.	0.03	120.00	120.00	110.00	0.00	9.09
22	Tower bolt receiver		No.	0.03	217.60	217.60	182.40	0.00	19.30
23	Steel window ventilator		Kg	1.12	208.70	191.30	191.30	9.09	9.09
6.Ancillary Materials									
25	Ready mix Prime paint		Ltr	0.09	162.09	156.86	151.63	3.33	6.90
26	Enamel paint		Ltr	0.05	144.87	144.87	144.87	0.00	0.00
27	Cement paint		Kg	1.73	130.43	130.43	119.57	0.00	9.09
28	Matt paint		Ltr	0.08	110.29	110.29	104.78	0.00	5.26
7.Electrical Fittings									
29	1.5sqmm copper cable		100 meter	0.33	122.16	122.16	122.16	0.00	0.00
30	PVC Pipe	20mm	1metre	0.16	408.43	408.43	408.43	0.00	0.00
31	PVC bend		No.	0.07	237.15	189.72	173.91	25.00	36.36
32	PVC tee		No.	0.04	141.18	141.18	117.65	0.00	20.00
33	5amps 5 pin at switch board itself		No.	0.00	249.18	150.82	150.82	65.22	65.22
34	5amps 5 pin non interlocking switch		No.	0.01	197.40	197.40	197.40	0.00	0.00
35	Ceiling Rose		No.	0.02	141.14	141.14	141.14	0.00	0.00
36	Bakelite pattern Holder		No.	0.02	137.93	151.72	151.72	-9.09	-9.09
37	Bulk Head Fittings		No.	0.01	240.00	240.00	240.00	0.00	0.00
38	8 SWG GI wire		kg	0.03	176.21	132.16	132.16	33.33	33.33
39	32 amps 500V fuse unit		No.	0.01	139.53	139.53	139.53	0.00	0.00
40	Junction box		No.	0.03	433.33	420.00	420.00	3.17	3.17
41	Jointbox		No.	0.01	319.15	319.15	276.60	0.00	15.38
42	Hylem sheet		No.	0.01	139.35	139.35	139.35	0.00	0.00
43	Flush type switch		No.	0.04	295.08	295.08	249.18	0.00	18.42
44	11wCFL bulb	11w	No.	0.01	160.49	160.49	148.15	0.00	8.33
45	Cailling bell		No.	0.01	200.00	200.00	173.33	0.00	15.38
46	25amps single phase ELCB		No.	0.22	113.56	113.56	100.95	0.00	12.50
47	25mm GI pipe line	25mm	1 metre	0.05	161.54	161.54	161.54	0.00	0.00
48	GI Pipe 20mm(Earth pit)	20mm	1 metre	0.02	162.39	132.48	132.48	22.58	22.58
49	40mm dia GI pipe	40mm	1 metre	0.01	215.00	211.64	201.56	1.59	6.67
50	15mm GI Pipe	15mm	1 metre	0.01	297.85	297.85	297.85	0.00	0.00
51	GI reducers		No.	0.00	144.32	144.32	132.93	0.00	8.57
8.Sanitary & Water Supply									
52	Indian Water Closet		No.	0.05	200.00	171.43	171.43	16.67	16.67
53	S.W.Gully Trap	6"x4"	No.	0.02	203.99	203.99	203.99	0.00	0.00
54	S.W.Bend	4"	No.	0.01	235.29	199.10	199.10	18.18	18.18
55	GI Pipe 20mm dia Hotwater	20mm	1 metre	0.06	305.56	215.28	215.28	41.94	41.94
56	Stone ware pipe 100mm	100mm	1 metre	0.15	432.99	268.04	268.04	61.54	61.54
57	PVC 32mm dia	32mm	1 metre	0.14	168.14	168.14	168.14	0.00	0.00
58	PVC 20mm dia	20mm	1 metre	0.02	186.87	186.87	170.85	0.00	9.38
59	PVC rain water down fall 110mm	110mm	1 metre	0.27	149.66	122.45	112.24	22.22	33.33
60	HDPE Cylindrical		No.	0.45	195.38	187.69	187.69	4.10	4.10
II.Labour cost									
1. Skilled Labour									
61	Mason I & II (Brick Layer I & II Class)		No.	12.12	163.64	163.64	163.64	0.00	0.00
62	Carpenter		No.	1.12	200.00	200.00	200.00	0.00	0.00
63	Painter		No.	1.39	200.00	200.00	200.00	0.00	0.00
64	Fitter I & II		No.	0.70	200.00	200.00	187.50	0.00	6.67
65	Plumber		No.	0.11	212.50	212.50	200.00	0.00	6.25
66	Electrician Gr. I & II		No.	0.46	200.00	200.00	200.00	0.00	0.00
2.Unskilled Labour									
67	Mazdoor-men		No.	8.35	175.00	162.50	162.50	7.69	7.69
68	Mazdoor-Women		No.	8.43	213.33	195.56	195.56	9.09	9.09
70	Helper		No.	0.26	444.44	444.44	380.95	0.00	16.67
III.Other expenses									
71	Mixing Charges per mortar		cu.m	0.75	233.33	233.33	233.33	0.00	0.00
72	E.B.Connection charges		No.	0.38	313.04	313.04	311.03	0.00	0.64
73	Contingencies	2.5%		2.22	185.28	176.81	169.98	4.79	9.00
74	Supervision charges	10%		8.89	185.28	176.81	169.98	4.79	9.00
				100.00					

TABLE - 1

BUILDING CONSTRUCTION COST INDEX

QUARTER : JUNE 2021

CENTRE : CHENNAI

(BASE YEAR:2011-12=100)

Sl. No.	ITEM	Weight	INDEX			% Variation	
			Current Quarter June 2021	Previous Quarter March 2021	Corresponding Qtr. of prev. year June 2020	Previous Quarter June 2021	Corresponding Qtr. of prev. year June 2020
I	<u>MATERIAL COST</u>						
1	BRICKS & TILES	20.93	155.33	147.91	132.11	5.02	17.58
2	SAND, STONE & OTHER QUARRY PRODUCTS	11.55	267.09	247.33	242.14	7.99	10.30
3	CEMENT & LIME	11.24	152.97	148.98	144.65	2.68	5.75
4	TIMBER & OTHER WOODS	2.08	236.56	236.56	229.24	0.00	3.19
5	IRON & STEEL	4.78	163.19	158.67	138.81	2.85	17.56
6	ANCILLIARY MATERIALS	1.96	131.43	131.18	121.09	0.19	8.54
7	ELECTRICAL FITTINGS	1.13	197.59	192.43	185.59	2.68	6.46
8	SANITARY WARE & WATER SUPPLY	1.15	217.68	181.20	178.57	20.13	21.90
II	<u>LABOUR COST</u>						
1	SKILLED LABOUR	15.90	172.36	172.36	171.73	0.00	0.37
2	UNSKILLED LABOUR	17.05	198.13	183.21	182.23	8.14	8.73
III	<u>OTHER EXPENSES</u>						
1	MIXING CHARGES	0.75	233.33	233.33	233.33	0.00	0.00
2	E.B.SERVICE CONNECTION CHARGES	0.38	313.04	313.04	311.03	0.00	0.64
3	CONTINGENCIES	2.22	185.28	176.81	169.98	4.79	9.00
4	SUPERVISION CHARGES	8.89	185.28	176.81	169.98	4.79	9.00
I	<i>MATERIAL COST</i>	54.82	183.49	174.40	163.83	5.21	12.00
II	<i>LABOUR COST</i>	32.94	185.69	177.98	177.16	4.34	4.82
III	<i>OTHER EXPENSES</i>	12.24	192.17	184.49	178.22	4.17	7.83
	BUILDING CONSTRUCTION COST INDEX	100	185.28	176.81	169.98	4.79	9.00

TABLE - 1A
BUILDING CONSTRUCTION COST INDEX - ITEM-WISE INDEX

Quarter : June 2021
(Base year:2011-12=100)

Centre : Kancheepuram

Sl. No.	Item	Specification	Unit	Weight	INDEX			% Variation	
					Current Quarter June 2021	Previous Quarter March 2021	Corresponding Qtr. of prev. year June 2020	Previous Quarter March 2021	Corresponding Qtr. of prev. year June 2020
I. Material cost									
1.Bricks and Tiles Products									
1	Bricks	9"x4.5"x2.25"	1000 Nos.	15.52	172.04	172.04	133.33	0.00	29.03
2	Brick Jelly	20mm	cu.m	0.61	203.13	203.13	150.00	0.00	35.42
3	Pressed Tiles	9"x9"	1000 Nos.	1.73	157.07	157.07	127.75	0.00	22.95
4	Glazes tiles	9"x9"	1 No.	0.15	380.95	380.95	309.52	0.00	23.08
5	Ceramic tiles	9"x9"	1 No.	0.86	357.14	321.43	321.43	11.11	11.11
2.Sand stone and other Quarry Products									
6	Sand for mortar	River	cu.m	3.57	504.63	560.70	510.23	-10.00	-1.10
7	Stone Jelly (HBSJ)	40mm	cu.m	4.24	146.73	146.73	144.84	0.00	1.30
8	Stone Jelly (HBSJ)	20mm	cu.m	0.40	135.98	135.98	141.64	0.00	-4.00
9	Stone Jelly Chips (HBSJ)	10mm	cu.m	1.64	171.98	171.98	164.82	0.00	4.35
10	Rough stone		cu.m	0.48	243.06	208.33	208.33	16.67	16.67
11	Bond stone		cu.m	0.00	0.00	0.00	0.00	0.00	0.00
3.Cement and Lime									
12	Cement		M.T	13.32	159.77	149.78	124.82	6.67	28.00
13	Lime stone		cu.m	0.26	145.50	144.49	142.55	0.70	2.07
4.Timber and other wood									
14	TW Frame		sq.m	1.67	262.76	240.24	240.24	9.38	9.38
15	TW Panel door shutter		sq.m	0.76	275.00	275.00	271.43	0.00	1.32
16	Solid PVC door shutter		sq.m	0.68	100.00	100.00	81.25	0.00	23.08
5.Iron and Steel									
17	Mild Steel Rods	10mm	MT	1.51	139.51	123.16	106.81	13.27	30.61
18	Ribbed Tar Steel (RTS)	8mm	MT	2.46	140.11	124.73	109.68	12.33	27.75
19	Binding Wire		Kq	0.54	126.32	121.46	116.60	4.00	8.33
20	Door catch		No.	0.03	134.83	122.57	122.57	10.00	10.00
21	Hold fast		No.	0.07	181.82	181.82	181.82	0.00	0.00
22	Tower bolt receiver		No.	0.02	545.45	500.00	500.00	9.09	9.09
23	Steel window ventilator		Kq	1.33	191.30	191.30	165.22	0.00	15.79
6.Ancillary Materials									
25	Ready mix Prime paint		Ltr	0.11	150.38	150.38	150.38	0.00	0.00
26	Enamel paint		Ltr	0.07	142.35	117.44	117.44	21.21	21.21
27	Cement paint		Kq	2.06	195.65	179.35	179.35	9.09	9.09
28	Matt paint		Ltr	0.11	204.08	122.45	119.05	66.67	71.43
7.Electrical Fittings									
29	1.5sqmm copper cable		100 meter	0.59	134.92	115.08	115.08	17.24	17.24
30	PVC Pipe	20mm	1metre	0.08	380.00	377.78	311.11	0.59	22.14
31	PVC bend		No.	0.04	476.19	380.95	349.21	25.00	36.36
32	PVC tee		No.	0.02	326.53	326.53	299.32	0.00	9.09
33	5amps 5 pin at switch board itself		No.	0.00	114.29	114.29	114.29	0.00	0.00
34	5amps 5 pin non interlocking switch		No.	0.01	222.22	222.22	200.00	0.00	11.11
35	Ceiling Rose		No.	0.02	209.39	187.73	180.51	11.54	16.00
36	Bakelite pattern Holder		No.	0.03	137.93	114.94	114.94	20.00	20.00
37	Bulk Head Fittings		No.	0.02	151.90	126.58	116.46	20.00	30.43
38	8 SWG GI wire		kq	0.05	168.14	149.15	149.15	12.73	12.73
39	32 amps 500V fuse unit		No.	0.01	187.50	165.00	165.00	13.64	13.64
40	Junction box		No.	0.03	200.00	200.00	160.00	0.00	25.00
41	Jointbox		No.	0.02	127.66	117.02	106.38	9.09	20.00
42	Hylem sheet		No.	0.01	144.00	144.00	138.42	0.00	4.03
43	Flush type switch		No.	0.04	250.00	250.00	200.00	0.00	25.00
44	11wCFL bulb	11w	No.	0.01	133.33	133.33	108.89	0.00	22.45
45	Calling bell		No.	0.01	213.33	213.33	213.33	0.00	0.00
46	25amps single phase ELCB		No.	0.15	200.00	200.00	166.67	0.00	20.00
47	25mm GI pipe line	25mm	1 metre	0.06	258.82	258.82	243.14	0.00	6.45
48	GI Pipe 20mm(Earth pit)	20mm	1 metre	0.02	129.31	129.31	129.31	0.00	0.00
49	40mm dia GI pipe	40mm	1 metre	0.01	265.31	265.31	231.29	0.00	14.71
50	15mm GI Pipe	15mm	1 metre	0.01	285.71	285.71	277.78	0.00	2.86
51	GI reducers		No.	0.00	192.31	192.31	192.31	0.00	0.00
8.Sanitary & Water Supply									
52	Indian Water Closet		No.	0.10	135.59	127.12	127.12	6.67	6.67
53	S.W.Gully Trap	6"x4"	No.	0.03	132.48	132.48	132.48	0.00	0.00
54	S.W.Bend	4"	No.	0.02	148.84	148.84	148.84	0.00	0.00
55	GI Pipe 20mm dia Hotwater	20mm	1 metre	0.14	171.43	128.57	114.29	33.33	50.00
56	Stone ware pipe 100mm	100mm	1 metre	0.27	118.03	118.03	118.03	0.00	0.00
57	PVC 32mm dia	32mm	1 metre	0.16	255.32	255.32	212.77	0.00	20.00
58	PVC 20mm dia	20mm	1 metre	0.02	324.32	324.32	291.89	0.00	11.11
59	PVC rain water down fall 110mm	110mm	1 metre	0.32	187.07	204.08	187.07	-8.33	0.00
60	HDPE Cylindrical		No.	0.54	169.23	169.23	160.00	0.00	5.77
II.Labour cost									
1. Skilled Labour									
61	Mason I & II (Brick Layer I & II Class)		No.	10.83	169.70	169.70	157.58	0.00	7.69
62	Carpenter		No.	1.22	169.70	169.70	145.45	0.00	16.67
63	Painter		No.	1.50	193.10	193.10	165.52	0.00	16.67
64	Fitter I & II		No.	0.83	175.00	150.00	150.00	16.67	16.67
65	Plumber		No.	0.13	193.94	145.45	145.45	33.33	33.33
66	Electrician Gr I & II		No.	0.48	200.00	171.43	171.43	16.67	16.67
2.Unskilled Labour									
67	Mazdoor-men		No.	7.49	199.17	199.17	199.17	0.00	0.00
68	Mazdoor-Women		No.	7.37	242.42	242.42	193.94	0.00	25.00
70	Helper		No.	0.31	326.80	261.44	261.44	25.00	25.00
III.Other expenses									
71	Mixing Charges per mortar		cu.m	1.07	166.67	166.67	138.89	0.00	20.00
72	E.B.Connection charges		No.	0.63	156.74	135.28	133.17	15.87	17.70
73	Contingencies	2.5%		2.22	194.76	192.25	170.12	1.30	14.48
74	Supervision charges	10%		8.89	194.76	192.25	170.12	1.30	14.48
				100.00					

TABLE - 1
BUILDING CONSTRUCTION COST INDEX

QUARTER : JUNE 2021

CENTRE :KANCHEEPURAM

(BASE YEAR:2011-12=100)

Sl. No.	ITEM	Weight	INDEX			% Variation	
			Current Quarter June 2021	Previous Quarter March 2021	Corresponding Qtr. of prev. year June 2020	Previous Quarter June 2021	Corresponding Qtr. of prev. year June 2020
I	<u>MATERIAL COST</u>						
1	BRICKS & TILES	18.87	181.76	180.13	143.32	0.90	26.82
2	SAND, STONE & OTHER QUARRY PRODUCTS	10.33	278.25	296.00	276.89	-6.00	0.49
3	CEMENT & LIME	13.58	159.49	149.68	125.16	6.55	27.42
4	TIMBER & OTHER WOODS	3.11	230.38	218.27	213.32	5.54	7.99
5	IRON & STEEL	5.95	152.06	140.89	124.26	7.93	22.38
6	ANCILLIARY MATERIALS	2.35	192.30	173.55	173.39	10.81	10.91
7	ELECTRICAL FITTINGS	1.25	191.12	176.15	162.05	8.50	17.94
8	SANITARY WARE & WATER SUPPLY	1.60	171.62	170.83	158.43	0.46	8.33
II	<u>LABOUR COST</u>						
1	SKILLED LABOUR	15.00	173.52	157.30	157.30	10.31	10.31
2	UNSKILLED LABOUR	15.16	222.75	221.44	197.88	0.59	12.57
III	<u>OTHER EXPENSES</u>						
1	MIXING CHARGES	1.07	166.67	166.67	138.89	0.00	20.00
2	E.B.SERVICE CONNECTION CHARGES	0.63	156.74	135.28	133.17	15.87	17.70
3	CONTINGENCIES	2.22	194.76	189.97	170.12	2.52	14.48
4	SUPERVISION CHARGES	8.89	194.76	189.97	170.12	2.52	14.48
I	<i>MATERIAL COST</i>	57.04	193.84	191.24	167.09	1.36	16.01
II	<i>LABOUR COST</i>	30.16	198.27	189.54	177.70	4.60	11.58
III	<i>OTHER EXPENSES</i>	12.80	190.56	185.36	165.71	2.81	15.00
	BUILDING CONSTRUCTION COST INDEX	100	194.76	189.97	170.12	2.52	14.48

BUILDING CONSTRUCTION COST INDEX - ITEM-WISE INDEX

Quarter : June 2021
(Base year:2011-12=100)

Centre : Cuddalore

Sl. No.	Item	Specification	Unit	Weight	INDEX			% Variation	
					Current Quarter June 2021	Previous Quarter March 2021	Corresponding Qtr. of prev. year June 2020	Previous Quarter March 2021	Corresponding Qtr. of prev. year June 2020
I. Material cost									
1.Bricks and Tiles Products									
1	Bricks	9"x4.5"x2.25"	1000 Nos.	13.72	136.36	136.36	145.45	0.00	-6.25
2	Brick Jelly	20mm	cu.m	0.42	125.55	125.55	125.55	0.00	0.00
3	Pressed Tiles	9"x9"	1000 Nos.	2.29	155.56	133.33	140.74	16.67	10.53
4	Glazes tiles	9"x9"	1 No.	0.13	437.50	412.50	412.50	6.06	6.06
5	Ceramic tiles	9"x9"	1 No.	0.80	147.86	142.86	142.86	3.50	3.50
2.Sand stone and other Quarry Products									
6	Sand for mortar	River	cu.m	3.97	465.60	432.38	432.38	7.68	7.68
7	Stone Jelly (HBSJ)	40mm	cu.m	3.46	127.42	127.42	117.85	0.00	8.12
8	Stone Jelly (HBSJ)	20mm	cu.m	0.36	160.91	113.71	154.95	41.51	3.85
9	Stone Jelly Chips (HBSJ)	10mm	cu.m	1.09	135.83	135.83	124.83	0.00	8.81
10	Rough stone		cu.m	0.44	154.51	151.74	151.74	1.83	1.83
11	Bond stone		cu.m	0.57	174.10	170.85	170.85	1.90	1.90
3.Cement and Lime									
12	Cement		M.T	13.04	136.51	136.51	123.81	0.00	10.26
13	Lime stone		cu.m	0.12	109.05	110.53	102.92	-1.33	5.95
4.Timber and other wood									
14	TW Frame		sq.m	1.41	300.00	300.00	300.00	0.00	0.00
15	TW Panel door shutter		sq.m	0.92	188.89	172.22	172.22	9.68	9.68
16	Solid PVC door shutter		sq.m	0.58	143.59	136.75	146.67	5.00	-2.10
5.Iron and Steel									
17	Mild Steel Rods	10mm	MT	1.30	147.62	134.52	105.95	9.73	39.33
18	Ribbed Tar Steel (RTS)	8mm	MT	2.12	147.67	134.88	105.81	9.48	39.56
19	Binding Wire		Kq	0.57	127.66	141.84	113.48	-10.00	12.50
20	Door catch		No.	0.02	131.14	125.14	125.14	4.79	4.79
21	Hold fast		No.	0.12	230.77	178.46	178.46	29.31	29.31
22	Tower bolt receiver		No.	0.03	314.29	182.86	165.71	71.88	89.66
23	Steel window ventilator		Kq	1.24	191.30	191.30	163.48	0.00	17.02
6.Ancillary Materials									
25	Ready mix Prime paint		Ltr	0.11	150.00	145.00	142.50	3.45	5.26
	Ready mix Synthetic								
26	Enamel paint		Ltr	0.06	150.94	135.85	128.30	11.11	17.65
27	Cement paint		Kq	1.84	125.00	113.64	113.64	10.00	10.00
28	Matt paint		Ltr	0.15	125.00	112.73	112.73	10.89	10.89
7.Electrical Fittings									
29	1.5sqmm copper cable		100 meter	0.36	220.52	220.52	220.52	0.00	0.00
30	PVC Pipe	20mm	1metre	0.15	550.00	537.50	512.50	2.33	7.32
31	PVC bend		No.	0.03	666.67	457.14	419.05	45.83	59.09
32	PVC tee		No.	0.02	285.71	285.71	285.71	0.00	0.00
33	Samps 5 pin at switch board itself		No.	0.01	110.00	110.00	110.00	0.00	0.00
34	Samps 5 pin non interlocking switch		No.	0.01	166.67	166.67	166.67	0.00	0.00
35	Ceiling Rose		No.	0.02	208.00	196.00	196.00	6.12	6.12
36	Bakelite pattern Holder		No.	0.02	130.00	150.00	150.00	-13.33	-13.33
37	Bulk Head Fittings		No.	0.02	160.00	150.00	180.00	6.67	-11.11
38	8 SWG GI wire		kq	0.06	118.93	124.68	112.53	-4.62	5.68
39	32 amps 500V fuse unit		No.	0.01	400.00	376.47	376.47	6.25	6.25
40	Junction box		No.	0.04	156.25	137.50	137.50	13.64	13.64
41	Jointbox		No.	0.02	121.43	100.00	100.00	21.43	21.43
42	Hylem sheet		No.	0.01	129.93	129.93	129.93	0.00	0.00
43	Flush type switch		No.	0.05	166.67	133.33	126.67	25.00	31.58
44	11wCFL bulb	11w	No.	0.01	162.50	143.75	143.75	13.04	13.04
45	Callina bell		No.	0.01	111.11	111.11	111.11	0.00	0.00
46	25amps single phase ELCB		No.	0.24	100.95	169.40	169.40	-40.41	-40.41
47	25mm GI pipe line	25mm	1 metre	0.05	155.32	155.32	155.32	0.00	0.00
48	GI Pipe 20mm(Earth pit)	20mm	1 metre	0.01	135.38	135.38	135.38	0.00	0.00
49	40mm dia GI pipe	40mm	1 metre	0.01	114.99	114.99	114.99	0.00	0.00
50	15mm GI Pipe	15mm	1 metre	0.01	115.23	115.23	115.23	0.00	0.00
51	GI reducers		No.	0.00	336.63	316.83	316.83	6.25	6.25
8.Sanitary & Water Supply									
52	Indian Water Closet		No.	0.07	159.30	159.30	159.30	0.00	0.00
53	S.W.Gully Trap	6"x4"	No.	0.01	187.50	183.75	183.75	2.04	2.04
54	S.W.Bend	4"	No.	0.01	140.00	140.00	131.25	0.00	6.67
55	GI Pipe 20mm dia Hotwater	20mm	1 metre	0.06	158.33	150.00	143.33	5.56	10.47
56	Stone ware pipe 100mm	100mm	1 metre	0.27	130.00	130.00	125.00	0.00	4.00
57	PVC 32mm dia	32mm	1 metre	0.14	135.60	120.88	120.88	12.18	12.18
58	PVC 20mm dia	20mm	1 metre	0.02	132.93	119.14	119.14	11.57	11.57
	PVC rain water down fall								
59	110mm	110mm	1 metre	0.23	261.03	233.08	233.08	11.99	11.99
60	HDPE Cylindrical		No.	0.50	292.31	292.31	292.31	0.00	0.00
II.Labour cost									
1. Skilled Labour									
	Mason I & II (Brick Layer I & II Class)		No.	12.27	160.00	160.00	140.00	0.00	14.29
62	Carpenter		No.	1.35	164.10	164.10	143.59	0.00	14.29
63	Painter		No.	1.55	187.50	187.50	175.00	0.00	7.14
64	Fitter I & II		No.	0.78	200.00	200.00	175.00	0.00	14.29
65	Plumber		No.	0.12	200.00	200.00	175.00	0.00	14.29
66	Electrician Gr I & II		No.	0.52	184.62	184.62	172.31	0.00	7.14
2.Unskilled Labour									
67	Mazdoor-men		No.	8.13	200.00	185.71	142.86	7.69	40.00
68	Mazdoor-Women		No.	7.88	232.80	211.64	169.31	10.00	37.50
70	Helper		No.	0.37	300.00	250.00	250.00	20.00	20.00
III.Other expenses									
71	Mixing Charges per mortar		cu.m	2.14	180.65	154.84	154.84	16.67	16.67
72	E.B.Connection charges		No.	0.42	178.15	153.64	153.64	15.95	15.95
73	Contingencies	2.5%		2.22	180.67	173.12	159.50	4.36	13.27
74	Supervision charges	10%		8.89	180.67	173.12	159.50	4.36	13.27
				100.00					14.64

TABLE - 1
BUILDING CONSTRUCTION COST INDEX

CENTRE : CUDDALORE **QUARTER : JUNE 2021**
(BASE YEAR:2011-12=100)

Sl. No.	ITEM	Weight	INDEX			% Variation	
			Current Quarter June 2021	Previous Quarter March 2021	Corresponding Qtr. of prev. year June 2020	Previous Quarter June 2021	Corresponding Qtr. of prev. year June 2020
I	<u>MATERIAL COST</u>						
1	BRICKS & TILES	17.36	141.47	138.12	146.28	2.43	-3.29
2	SAND, STONE & OTHER QUARRY PRODUCTS	9.89	269.19	253.83	250.77	6.05	7.35
3	CEMENT & LIME	13.16	136.26	136.27	123.62	-0.01	10.22
4	TIMBER & OTHER WOODS	2.90	233.76	227.13	229.11	2.92	2.03
5	IRON & STEEL	5.40	158.35	149.71	121.96	5.77	29.84
6	ANCILLIARY MATERIALS	2.16	126.95	115.74	115.41	9.69	10.00
7	ELECTRICAL FITTINGS	1.18	229.22	233.75	229.05	-1.94	0.07
8	SANITARY WARE & WATER SUPPLY	1.30	219.33	212.24	210.85	3.34	4.02
II	<u>LABOUR COST</u>						
1	SKILLED LABOUR	16.58	165.84	165.84	146.47	0.00	13.23
2	UNSKILLED LABOUR	16.39	218.06	199.65	158.02	9.22	37.99
III	<u>OTHER EXPENSES</u>						
1	MIXING CHARGES	2.14	180.65	154.84	154.84	16.67	16.67
2	E.B.SERVICE CONNECTION CHARGES	0.42	178.15	153.64	153.64	15.95	15.95
3	CONTINGENCIES	2.22	180.67	173.12	159.50	4.36	13.27
4	SUPERVISION CHARGES	8.89	180.67	173.12	159.50	4.36	13.27
I	<i>MATERIAL COST</i>	53.36	173.82	168.12	167.23	3.39	3.94
II	<i>LABOUR COST</i>	32.97	191.79	182.64	152.21	5.01	26.01
III	<i>OTHER EXPENSES</i>	13.67	180.59	169.66	158.59	6.44	13.87
	BUILDING CONSTRUCTION COST INDEX	100	180.67	173.12	159.50	4.36	13.27

TABLE - 1A

BUILDING CONSTRUCTION COST INDEX - ITEM-WISE INDEX

Centre : Vellore

Quarter : June 2021

(Base year:2011-12=100)

Sl. No.	Item	Specification	Unit	Weight	INDEX			% Variation	
					Current Quarter June 2021	Previous Quarter March 2021	Corresponding Qtr. of prev. year June 2020	Previous Quarter March 2021	Corresponding Qtr. of prev. year June 2020
I. Material cost									
1.Bricks and Tiles Products									
1	Bricks	9"x4.5"x2	1000 Nos.	17.18	144.68	144.68	136.17	0.00	6.25
2	Brick Jelly	20mm	cu.m	0.78	128.49	128.45	128.45	0.03	0.03
3	Pressed Tiles	9"x9"	1000 Nos.	1.69	235.29	229.41	223.53	2.56	5.26
4	Glazes tiles	9"x9"	1 No.	0.16	238.10	214.29	214.29	11.11	11.11
5	Ceramic tiles	9"x9"	1 No.	0.94	242.86	228.57	228.57	6.25	6.25
2.Sand stone and other Quarry Products									
6	Sand for mortar	River	cu.m	4.80	410.49	370.72	354.58	10.73	15.77
7	Stone Jelly (HBSJ)	40mm	cu.m	4.06	184.69	127.41	122.36	44.96	50.94
8	Stone Jelly (HBSJ)	20mm	cu.m	0.42	143.07	122.18	117.96	17.10	21.29
9	Stone Jelly Chips (HBSJ)	10mm	cu.m	1.28	207.92	171.13	150.09	21.50	38.54
10	Rough stone		cu.m	0.38	211.90	208.10	208.10	1.83	1.83
11	Bond stone		cu.m	0.65	178.33	175.00	175.00	1.90	1.90
3.Cement and Lime									
12	Cement		M.T	14.50	138.91	138.91	130.54	0.00	6.41
13	Lime stone		cu.m	0.17	197.06	197.06	152.94	0.00	28.85
4.Timber and other wood									
14	TW Frame		sq.m	1.30	158.73	154.23	154.23	2.92	2.92
15	TW Panel door shutter		sq.m	1.07	177.78	201.67	201.67	-11.85	-11.85
16	Solid PVC door shutter		sq.m	0.45	127.55	112.24	112.24	13.64	13.64
5.Iron and Steel									
17	Mild Steel Rods	10mm	MT	1.59	136.36	125.00	111.25	9.09	22.57
18	Ribbed Tar Steel (RTS)	8mm	MT	2.51	145.24	147.55	142.94	-1.56	1.61
19	Binding Wire		Kg	0.59	136.00	131.20	128.00	3.66	6.25
20	Door catch		No.	0.03	131.43	125.14	125.14	5.02	5.02
21	Hold fast		No.	0.04	200.00	181.25	181.25	10.34	10.34
22	Tower bolt receiver		No.	0.02	388.89	388.89	388.89	0.00	0.00
23	Steel window ventilator		Kg	1.45	200.00	200.00	170.43	0.00	17.35
6.Ancillary Materials									
25	Ready mix Prime paint		Ltr	0.09	190.00	190.00	186.67	0.00	1.79
26	Ready mix Synthetic Enamel paint		Ltr	0.06	200.00	200.00	190.91	0.00	4.76
27	Cement paint		Kg	2.16	136.36	125.00	125.00	9.09	9.09
28	Matt paint		Ltr	0.11	185.71	139.29	139.29	33.33	33.33
7.Electrical Fittings									
29	1.5samm copper cable		100 meter	0.28	283.64	283.64	283.64	0.00	0.00
30	PVC Pipe	20mm	1metre	0.12	642.86	540.16	523.81	19.01	22.73
31	PVC bend		No.	0.04	416.67	400.00	366.67	4.17	13.64
32	PVC tee		No.	0.02	444.44	380.95	349.21	16.67	27.27
33	5amps 5 pin at switch board	itself	No.	0.00	138.46	138.46	138.46	0.00	0.00
34	5amps 5 pin non interlocking switch		No.	0.01	208.33	166.67	166.67	25.00	25.00
35	Ceiling Rose		No.	0.01	210.00	210.00	200.00	0.00	5.00
36	Bakelite pattern Holder		No.	0.03	200.00	166.67	166.67	20.00	20.00
37	Bulk Head Fittings		No.	0.01	360.00	360.00	360.00	0.00	0.00
38	8 SWG GI wire		kg	0.04	190.45	203.15	165.06	-6.25	15.38
39	32 amps 500V fuse unit		No.	0.01	457.14	238.86	238.86	91.39	91.39
40	Junction box		No.	0.04	333.33	146.67	146.67	127.27	127.27
41	Jointbox		No.	0.01	255.32	255.32	255.32	0.00	0.00
42	Hylem sheet		No.	0.02	130.63	130.63	130.63	0.00	0.00
43	Flush type switch		No.	0.05	133.33	120.00	120.00	11.11	11.11
44	11wCFL bulb	11w	No.	0.01	150.00	150.00	150.00	0.00	0.00
45	Calling bell		No.	0.01	344.44	344.44	344.44	0.00	0.00
46	25amps single phase ELCB		No.	0.29	124.92	169.40	169.40	-26.26	-26.26
47	25mm GI pipe line	25mm	1 metre	0.06	181.82	181.82	181.82	0.00	0.00
48	GI Pipe 20mm(Earth pit)	20mm	1 metre	0.01	276.92	230.77	227.69	20.00	21.62
49	40mm dia GI pipe	40mm	1 metre	0.01	235.71	116.43	116.43	102.45	102.45
50	15mm GI Pipe	15mm	1 metre	0.01	216.67	216.67	216.67	0.00	0.00
51	GI reducers		No.	0.01	115.43	114.29	114.29	1.00	1.00
8.Sanitary & Water Supply									
52	Indian Water Closet		No.	0.07	243.24	229.73	229.73	5.88	5.88
53	S.W.Gully Trap	6"x4"	No.	0.01	400.00	341.67	333.33	17.07	20.00
54	S.W.Bend	4"	No.	0.01	355.56	355.56	355.56	0.00	0.00
55	GI Pipe 20mm dia Hotwater	20mm	1 metre	0.07	273.33	246.67	246.67	10.81	10.81
56	Stone ware pipe 100mm	100mm	1 metre	0.16	350.00	340.00	335.00	2.94	4.48
57	PVC 32mm dia	32mm	1 metre	0.17	266.67	122.22	122.22	118.18	118.18
58	PVC 20mm dia	20mm	1 metre	0.02	333.33	120.00	120.00	177.78	177.78
59	PVC rain water down fall 110mm	110mm	1 metre	0.23	200.00	181.89	181.89	9.95	9.95
60	HDPE Cylindrical		No.	0.59	184.62	172.31	172.31	7.14	7.14
II.Labour cost									
1. Skilled Labour									
Mason I & II (Brick Layer I & II Class)									
61			No.	8.62	233.33	233.33	233.33	0.00	0.00
62	Carpenter		No.	0.97	233.33	233.33	233.33	0.00	0.00
63	Painter		No.	1.13	280.00	280.00	280.00	0.00	0.00
64	Fitter I & II		No.	0.57	280.00	280.00	280.00	0.00	0.00
65	Plumber		No.	0.09	280.00	280.00	280.00	0.00	0.00
66	Electrician Gr I & II		No.	0.38	280.00	280.00	280.00	0.00	0.00
2.Unskilled Labour									
67	Mazdoor-men		No.	7.15	198.10	198.10	190.48	0.00	4.00
68	Mazdoor-Women		No.	6.65	241.18	241.18	235.29	0.00	2.50
70	Helper		No.	0.24	446.43	446.43	446.43	0.00	0.00
III.Other expenses									
71	Mixing Charges per mortar		cu.m	1.58	315.08	315.08	315.08	0.00	0.00
72	E.B.Connection charges		No.	0.61	264.60	262.44	259.24	0.82	2.07
73	Contingencies	2.5%		2.22	197.33	190.55	183.88	3.56	7.32
74	Supervision charges	10%		8.89	197.33	190.55	183.88	3.56	7.32
				100.00					6.98

TABLE - 1
BUILDING CONSTRUCTION COST INDEX

CENTRE : VELLORE

QUARTER : JUNE 2021
(BASE YEAR:2011-12=100)

Sl. No.	ITEM	Weight	INDEX			% Variation	
			Current Quarter June 2021	Previous Quarter March 2021	Corresponding Qtr. of prev. year June 2020	Previous Quarter June 2021	Corresponding Qtr. of prev. year June 2020
I	<u>MATERIAL COST</u>						
1	BRICKS & TILES	20.22	156.64	155.32	147.80	0.85	5.98
2	SAND, STONE & OTHER QUARRY PRODUCTS	11.68	279.84	238.17	227.24	17.50	23.15
3	CEMENT & LIME	14.79	139.58	139.58	130.80	0.00	6.71
4	TIMBER & OTHER WOODS	2.85	160.96	165.52	165.52	-2.75	-2.75
5	IRON & STEEL	6.29	155.96	153.38	140.81	1.68	10.76
6	ANCILLIARY MATERIALS	2.44	142.26	129.98	117.48	9.44	21.09
7	ELECTRICAL FITTINGS	1.08	267.07	254.15	248.99	5.08	7.26
8	SANITARY WARE & WATER SUPPLY	1.32	229.98	196.05	195.38	17.31	17.71
II	<u>LABOUR COST</u>						
1	SKILLED LABOUR	11.86	241.93	241.93	241.93	0.00	0.00
2	UNSKILLED LABOUR	14.16	222.82	222.82	216.16	0.00	3.08
III	<u>OTHER EXPENSES</u>						
1	MIXING CHARGES	1.59	315.08	315.08	315.08	0.00	0.00
2	E.B.SERVICE CONNECTION CHARGES	0.61	264.60	262.44	259.24	0.82	2.07
3	CONTINGENCIES	2.22	197.33	190.55	183.88	3.56	7.32
4	SUPERVISION CHARGES	8.89	197.33	190.55	183.88	3.56	7.32
I	<i>MATERIAL COST</i>	60.66	179.11	169.23	161.07	5.84	11.20
II	<i>LABOUR COST</i>	26.02	231.53	231.53	227.91	0.00	1.59
III	<i>OTHER EXPENSES</i>	13.32	214.41	208.64	202.93	2.76	5.66
	BUILDING CONSTRUCTION COST INDEX	100	197.33	190.55	183.88	3.56	7.32

TABLE - 1A
BUILDING CONSTRUCTION COST INDEX - ITEM-WISE INDEX

Quarter : June 2021
(Base year:2011-12=100)

Centre : Salem

Sl. No.	Item	Specification	Unit	Weight	INDEX			% Variation	
					Current Quarter June 2021	Previous Quarter March 2021	Corresponding Qtr. of prev. year June 2020	Previous Quarter March 2021	Corresponding Qtr. of prev. year June 2020
I. Material cost									
1.Bricks and Tiles Products									
1	Bricks	9"x4.5"x2	1000 Nos	16.39	164.38	153.42	153.42	7.14	7.14
2	Brick Jelly	20mm	cu.m	0.48	151.59	151.59	151.59	0.00	0.00
3	Pressed Tiles	9"x9"	1000 Nos	1.42	220.69	200.00	200.00	10.34	10.34
4	Glazes tiles	9"x9"	1 No.	0.15	300.00	293.75	275.00	2.13	9.09
5	Ceramic tiles	9"x9"	1 No.	0.54	343.56	331.29	319.02	3.70	7.69
2.Sand stone and other Quarry Products									
6	Sand for mortar	River	cu.m	4.75	480.18	480.18	480.18	0.00	0.00
7	Stone Jelly (HBSJ)	40mm	cu.m	3.33	140.60	140.60	134.37	0.00	4.63
8	Stone Jelly (HBSJ)	20mm	cu.m	0.37	116.03	116.03	116.03	0.00	0.00
9	Stone Jelly Chips (HBSJ)	10mm	cu.m	1.80	114.83	114.83	109.75	0.00	4.63
10	Rough stone		cu.m	0.49	236.36	236.36	218.18	0.00	8.33
11	Bond stone		cu.m	0.67	398.67	385.38	372.09	3.45	7.14
3.Cement and Lime									
12	Cement		M.T	14.31	146.67	146.67	133.33	0.00	10.00
13	Lime stone		cu.m	0.17	117.65	117.65	117.65	0.00	0.00
4.Timber and other wood									
14	TW Frame		sq.m	1.38	146.48	139.16	139.16	5.26	5.26
15	TW Panel door shutter		sq.m	0.92	116.83	116.83	116.83	0.00	0.00
16	Solid PVC door shutter		sq.m	0.39	106.98	109.88	109.88	-2.65	-2.65
5.Iron and Steel									
17	Mild Steel Rods	10mm	MT	1.71	128.63	122.41	102.70	5.08	25.25
18	Ribbed Tar Steel (RTS)	8mm	MT	2.77	129.31	123.16	104.68	5.00	23.53
19	Binding Wire		Kg	0.54	226.09	173.91	139.13	30.00	62.50
20	Door catch		No.	0.02	203.13	187.50	181.25	8.33	12.07
21	Hold fast		No.	0.07	238.10	222.22	215.87	7.14	10.29
22	Tower bolt receiver		No.	0.03	153.33	150.00	150.00	2.22	2.22
23	Steel window ventilator		Kq	1.43	135.65	135.65	121.74	0.00	11.43
6.Ancillary Materials									
25	Ready mix Prime paint		Ltr	0.13	119.05	119.05	119.05	0.00	0.00
26	Enamel paint		Ltr	0.06	150.00	150.00	150.00	0.00	0.00
27	Cement paint		Kq	2.17	122.22	111.11	111.11	10.00	10.00
28	Matt paint		Ltr	0.11	140.35	136.84	136.84	2.56	2.56
7.Electrical Fittings									
29	1.5sqmm copper cable		100 mete	0.49	153.85	153.85	153.85	0.00	0.00
30	PVC Pipe	20mm	1metre	0.12	296.10	284.13	284.13	4.21	4.21
31	PVC bend		No.	0.04	253.97	253.97	253.97	0.00	0.00
32	PVC tee		No.	0.02	357.14	357.14	328.57	0.00	8.70
33	5amps 5 pin at switch board itself		No.	0.01	114.29	114.29	114.29	0.00	0.00
34	5amps 5 pin non interlocking switch		No.	0.01	190.00	160.00	160.00	18.75	18.75
35	Ceiling Rose		No.	0.02	226.67	226.67	200.00	0.00	13.33
36	Bakelite pattern Holder		No.	0.02	222.86	217.14	182.86	2.63	21.88
37	Bulk Head Fittings		No.	0.01	238.71	232.26	200.00	2.78	19.35
38	8 SWG GI wire		kg	0.04	179.78	213.48	179.78	-15.79	0.00
39	32 amps 500V fuse unit		No.	0.02	361.52	349.85	349.85	3.33	3.33
40	Junction box		No.	0.04	120.00	106.67	106.67	12.50	12.50
41	Jointbox		No.	0.02	122.35	122.35	122.35	0.00	0.00
42	Hvlem sheet		No.	0.02	139.21	139.21	128.77	0.00	8.11
43	Flush type switch		No.	0.05	142.86	135.71	135.71	5.26	5.26
44	11wCFL bulb	11w	No.	0.01	119.88	119.88	92.35	0.00	29.80
45	Calling bell		No.	0.01	480.87	472.13	467.76	1.85	2.80
46	25amps single phase ELCB		No.	0.28	113.56	113.56	113.56	0.00	0.00
47	25mm GI pipe line	25mm	1 metre	0.06	350.00	347.27	340.91	0.79	2.67
48	GI Pipe 20mm(Earth pit)	20mm	1 metre	0.02	195.56	195.56	160.00	0.00	22.22
49	40mm dia GI pipe	40mm	1 metre	0.01	325.93	324.51	320.99	0.43	1.54
50	15mm GI Pipe	15mm	1 metre	0.01	350.62	345.68	342.39	1.43	2.40
51	GI reducers		No.	0.00	178.57	164.29	157.14	8.70	13.64
8.Sanitary & Water Supply									
52	Indian Water Closet		No.	0.07	131.58	131.58	131.58	0.00	0.00
53	S.W.Gully Trap	6"x4"	No.	0.02	217.78	213.33	195.56	2.08	11.36
54	S.W.Bend	4"	No.	0.01	408.45	394.37	246.48	3.57	65.71
55	GI Pipe 20mm dia Hotwater	20mm	1 metre	0.10	227.03	221.62	169.73	2.44	33.76
56	Stone ware pipe 100mm	100mm	1 metre	0.19	410.26	328.21	246.15	25.00	66.67
57	PVC 32mm dia	32mm	1 metre	0.17	252.75	250.55	248.35	0.88	1.77
58	PVC 20mm dia	20mm	1 metre	0.02	314.40	303.36	297.85	3.64	5.56
59	PVC rain water down fall 110mm	110mm	1 metre	0.33	256.43	250.00	246.43	2.57	4.06
60	HDPE Cylindrical		No.	0.58	138.46	138.46	132.31	0.00	4.65
II.Labour cost									
1. Skilled Labour									
61	Mason I & II (Brick Layer I & II Class)		No.	10.42	230.66	230.66	189.96	0.00	21.43
62	Carpenter		No.	1.09	233.58	233.58	189.78	0.00	23.08
63	Painter		No.	1.36	229.51	229.51	196.72	0.00	16.67
64	Fitter I & II		No.	0.68	262.30	245.90	196.72	6.67	33.33
65	Plumber		No.	0.11	262.30	245.90	196.72	6.67	33.33
66	Electrician Gr I & II		No.	0.43	254.67	237.69	203.74	7.14	25.00
2.Unskilled Labour									
67	Mazdoor-men		No.	6.02	311.11	266.67	244.44	16.67	27.27
68	Mazdoor-Women		No.	7.45	206.45	206.45	206.45	0.00	0.00
70	Helper		No.	0.31	273.50	273.50	273.50	0.00	0.00
III.Other expenses									
71	Mixing Charges per mortar		cu.m	0.61	200.00	200.00	200.00	0.00	0.00
72	E.B.Connection charges		No.	0.97	140.66	139.03	136.96	1.17	2.70
73	Contingencies	2.5%		2.22	202.60	195.55	183.04	3.61	10.68
74	Supervision charges	10%		8.89	202.60	195.55	183.04	3.61	10.68
				100.00					

TABLE - 1
BUILDING CONSTRUCTION COST INDEX

CENTRE : SALEM

QUARTER : JUNE 2021
(BASE YEAR:2011-12=100)

Sl. No.	ITEM	Weight	INDEX			% Variation	
			Current Quarter June 2021	Previous Quarter March 2021	Corresponding Qtr. of prev. year June 2020	Previous Quarter June 2021	Corresponding Qtr. of prev. year June 2020
I	<u>MATERIAL COST</u>						
1	BRICKS & TILES	18.93	174.45	163.04	162.54	7.00	7.33
2	SAND, STONE & OTHER QUARRY PRODUCTS	11.60	296.40	295.62	291.44	0.26	1.70
3	CEMENT & LIME	14.45	146.33	146.33	133.15	0.00	9.90
4	TIMBER & OTHER WOODS	2.69	130.60	127.27	127.27	2.62	2.62
5	IRON & STEEL	6.55	139.90	131.19	112.31	6.64	24.56
6	ANCILLIARY MATERIALS	2.47	123.58	113.68	113.68	8.71	8.71
7	ELECTRICAL FITTINGS	1.34	183.73	182.27	178.04	0.80	3.20
8	SANITARY WARE & WATER SUPPLY	1.48	223.39	210.61	191.74	6.06	16.51
II	<u>LABOUR COST</u>						
1	SKILLED LABOUR	14.06	233.29	231.85	191.40	0.62	21.89
2	UNSKILLED LABOUR	13.75	253.70	234.29	224.58	8.29	12.97
III	<u>OTHER EXPENSES</u>						
1	MIXING CHARGES	0.60	200.00	200.00	200.00	0.00	0.00
2	E.B.SERVICE CONNECTION CHARGES	0.97	140.66	139.03	136.96	1.17	2.70
3	CONTINGENCIES	2.22	202.60	195.55	183.04	3.61	10.68
4	SUPERVISION CHARGES	8.89	202.60	195.55	183.04	3.61	10.68
I	<i>MATERIAL COST</i>	59.50	184.50	178.83	172.01	3.17	7.26
II	<i>LABOUR COST</i>	27.81	243.39	233.06	207.81	4.43	17.12
III	<i>OTHER EXPENSES</i>	12.69	197.72	191.42	180.31	3.29	9.65
BUILDING CONSTRUCTION COST INDEX		100	202.60	195.55	183.04	3.61	-6.40

TABLE - 1A
BUILDING CONSTRUCTION COST INDEX - ITEM-WISE INDEX

Centre : Dharmapuri
Quarter : June 2021
(Base year:2011-12=100)

Sl. No.	Item	Specification	Unit	Weight	INDEX			% Variation	
					Current Quarter June 2021	Previous Quarter March 2021	Corresponding Qtr. of prev. year June 2020	Previous Quarter March 2021	Corresponding Qtr. of prev. year June 2020
I. Material cost									
1.Bricks and Tiles Products									
1	Bricks	9"x4.5"x2	1000 Nos	15.86	164.38	189.67	151.74	-13.33	8.33
2	Brick Jelly	20mm	cu.m	0.54	238.99	238.99	238.99	0.00	0.00
3	Pressed Tiles	9"x9"	1000 Nos	1.82	168.17	159.76	159.76	5.26	5.26
4	Glazes tiles	9"x9"	1 No.	0.51	175.00	158.33	158.33	10.53	10.53
5	Ceramic tiles	9"x9"	1 No.	0.60	441.72	368.10	368.10	20.00	20.00
2.Sand stone and other Quarry Products									
6	Sand for mortar	River	cu.m	3.83	665.41	565.60	554.55	17.65	19.99
7	Stone Jelly (HBSJ)	40mm	cu.m	2.84	223.50	223.50	215.59	0.00	3.67
8	Stone Jelly (HBSJ)	20mm	cu.m	0.42	148.47	148.47	162.40	0.00	-8.58
9	Stone Jelly Chips (HBSJ)	10mm	cu.m	2.00	149.72	149.72	149.72	0.00	0.00
10	Rough stone		cu.m	0.57	295.14	151.74	151.74	94.51	94.51
11	Bond stone		cu.m	1.59	187.50	157.50	157.50	19.05	19.05
3.Cement and Lime									
12	Cement		M.T	15.11	153.30	144.49	148.02	6.10	3.57
13	Lime stone		cu.m	0.19	139.29	131.37	131.37	6.03	6.03
4.Timber and other wood									
14	TW Frame		sq.m	1.99	151.52	139.46	139.46	8.65	8.65
15	TW Panel door shutter		sq.m	1.03	152.38	152.38	152.38	0.00	0.00
16	Solid PVC door shutter		sq.m	0.57	123.62	123.62	123.62	0.00	0.00
5.Iron and Steel									
17	Mild Steel Rods	10mm	MT	1.54	126.05	126.05	123.47	0.00	2.08
18	Ribbed Tar Steel (RTS)	8mm	MT	2.64	120.05	120.05	117.65	0.00	2.04
19	Binding Wire		Kg	0.58	161.43	161.43	152.47	0.00	5.88
20	Door catch		No.	0.03	325.00	290.00	290.00	12.07	12.07
21	Hold fast		No.	0.08	265.63	218.75	218.75	21.43	21.43
22	Tower bolt receiver		No.	0.06	117.65	117.65	106.95	0.00	10.00
23	Steel window ventilator		Kq	1.60	173.91	173.91	166.96	0.00	4.17
6.Ancillary Materials									
25	Ready mix Prime paint		Ltr	0.14	138.10	138.10	138.10	0.00	0.00
26	Enamel paint		Ltr	0.07	150.00	150.00	150.00	0.00	0.00
27	Cement paint		Kq	2.48	119.57	119.57	119.57	0.00	0.00
28	Matt paint		Ltr	0.13	132.65	132.65	132.65	0.00	0.00
7.Electrical Fittings									
29	1.5sqmm copper cable		100 metre	0.59	161.14	161.14	161.14	0.00	0.00
30	PVC Pipe	20mm	1metre	0.19	700.00	460.00	460.00	52.17	52.17
31	PVC bend		No.	0.05	253.97	253.97	253.97	0.00	0.00
32	PVC tee		No.	0.03	326.53	99.32	99.32	228.77	228.77
33	5amps 5 pin at switch board	itself	No.	0.01	115.38	115.38	115.38	0.00	0.00
34	5amps 5 pin non interlocking switch		No.	0.01	325.00	210.00	200.00	54.76	62.50
35	Ceiling Rose		No.	0.03	150.00	150.00	135.42	0.00	10.77
36	Bakelite pattern Holder		No.	0.03	164.38	164.38	164.38	0.00	0.00
37	Bulk Head Fittings		No.	0.02	147.37	147.37	147.37	0.00	0.00
38	8 SWG GI wire		kg	0.04	149.75	149.75	149.75	0.00	0.00
39	32 amps 500V fuse unit		No.	0.01	266.67	139.33	139.33	91.39	91.39
40	Junction box		No.	0.05	106.67	106.67	106.67	0.00	0.00
41	Jointbox		No.	0.02	144.44	144.44	144.44	0.00	0.00
42	Hylem sheet		No.	0.02	146.17	130.63	130.63	11.90	11.90
43	Flush type switch		No.	0.06	200.00	164.29	164.29	21.74	21.74
44	11wCFL bulb	11w	No.	0.01	200.00	126.00	126.00	58.73	58.73
45	Calling bell		No.	0.01	291.67	291.67	291.67	0.00	0.00
46	25amps single phase ELCB		No.	0.31	110.41	110.41	110.41	0.00	0.00
47	25mm GI pipe line	25mm	1 metre	0.07	160.87	160.87	160.87	0.00	0.00
48	GI Pipe 20mm(Earth pit)	20mm	1 metre	0.01	305.56	159.72	159.72	91.30	91.30
49	40mm dia GI pipe	40mm	1 metre	0.01	192.52	110.88	110.88	73.62	73.62
50	15mm GI Pipe	15mm	1 metre	0.01	190.48	190.48	190.48	0.00	0.00
51	GI reducers		No.	0.00	218.38	216.22	216.22	1.00	1.00
8.Sanitary & Water Supply									
52	Indian Water Closet		No.	0.08	200.00	170.00	170.00	17.65	17.65
53	S.W.Gully Trap	6"x4"	No.	0.01	213.33	213.33	213.33	0.00	0.00
54	S.W.Bend	4"	No.	0.02	129.41	129.41	129.41	0.00	0.00
55	GI Pipe 20mm dia Hotwater	20mm	1 metre	0.12	220.00	120.00	120.00	83.33	83.33
56	Stone ware pipe 100mm	100mm	1 metre	0.30	138.18	138.18	138.18	0.00	0.00
57	PVC 32mm dia	32mm	1 metre	0.19	223.40	117.02	117.02	90.91	90.91
58	PVC 20mm dia	20mm	1 metre	0.03	136.90	135.71	135.71	0.88	0.88
59	PVC rain water down fall 110mm	110mm	1 metre	0.39	197.28	117.55	117.55	67.82	67.82
60	HDPE Cylindrical		No.	0.64	264.62	264.62	264.62	0.00	0.00
II.Labour cost									
1. Skilled Labour									
61	Mason I & II (Brick Layer I & II Class)		No.	9.86	224.00	224.00	224.00	0.00	0.00
62	Carpenter		No.	1.01	228.07	228.07	228.07	0.00	0.00
63	Painter		No.	1.17	255.32	255.32	255.32	0.00	0.00
64	Fitter I & II		No.	0.58	237.84	237.84	237.84	0.00	0.00
65	Plumber		No.	0.10	195.12	195.12	195.12	0.00	0.00
66	Electrician Gr I & II		No.	0.47	175.44	175.44	175.44	0.00	0.00
2.Unskilled Labour									
67	Mazdoor-men		No.	6.95	215.05	193.55	193.55	11.11	11.11
68	Mazdoor-Women		No.	4.99	301.08	258.06	258.06	16.67	16.67
70	Helper		No.	0.36	264.90	264.90	264.90	0.00	0.00
III.Other expenses									
71	Mixing Charges per mortar		cu.m	0.64	200.00	200.00	200.00	0.00	0.00
72	E.B.Connection charges		No.	0.58	223.23	223.23	194.98	0.00	14.49
73	Contingencies	2.5%		2.22	209.32	199.97	192.98	4.68	8.47
74	Supervision charges	10%		8.89	209.32	199.97	192.98	4.68	8.47
				100.00					

TABLE - 1
BUILDING CONSTRUCTION COST INDEX

CENTRE : DHARMAPURI

QUARTER : JUNE 2021
(BASE YEAR:2011-12=100)

Sl. No.	ITEM	Weight	INDEX			% Variation	
			Current Quarter June 2021	Previous Quarter March 2021	Corresponding Qtr. of prev. year June 2020	Previous Quarter June 2021	Corresponding Qtr. of prev. year June 2020
I	<u>MATERIAL COST</u>						
1	BRICKS & TILES	19.49	175.73	192.96	161.84	-8.93	8.59
2	SAND, STONE & OTHER QUARRY PRODUCTS	11.17	356.45	310.99	305.75	14.62	16.58
3	CEMENT & LIME	12.41	153.13	144.33	147.82	6.10	3.60
4	TIMBER & OTHER WOODS	2.61	147.30	140.63	140.63	4.74	4.74
5	IRON & STEEL	5.31	141.00	140.28	136.11	0.51	3.59
6	ANCILLIARY MATERIALS	2.14	121.87	121.87	121.87	0.00	0.00
7	ELECTRICAL FITTINGS	1.17	223.97	186.06	185.77	20.38	20.56
8	SANITARY WARE & WATER SUPPLY	1.23	214.63	177.82	177.82	20.70	20.70
II	<u>LABOUR COST</u>						
1	SKILLED LABOUR	14.72	225.75	225.75	225.75	0.00	0.00
2	UNSKILLED LABOUR	17.56	251.42	221.82	221.82	13.34	13.34
III	<u>OTHER EXPENSES</u>						
1	MIXING CHARGES	0.53	200.00	200.00	200.00	0.00	0.00
2	E.B.SERVICE CONNECTION CHARGES	0.55	223.23	223.23	194.98	0.00	14.49
3	CONTINGENCIES	2.22	209.32	199.97	192.64	4.68	8.66
4	SUPERVISION CHARGES	8.89	209.32	199.97	192.64	4.68	8.66
I	<i>MATERIAL COST</i>	55.54	197.48	189.96	179.75	3.96	9.86
II	<i>LABOUR COST</i>	32.27	238.13	223.85	223.85	6.38	6.38
III	<i>OTHER EXPENSES</i>	12.19	209.50	201.07	193.14	4.19	8.47
	BUILDING CONSTRUCTION COST INDEX	100	209.32	199.97	192.64	4.68	8.66

TABLE - 1A
BUILDING CONSTRUCTION COST INDEX - ITEM-WISE INDEX

Centre : Coimbatore
Quarter : June 2021
(Base year:2011-12=100)

Sl. No.	Item	Specification	Unit	Weight	INDEX			% Variation	
					Current Quarter June 2021	Previous Quarter March 2021	Corresponding Qtr. of prev. year June 2020	Previous Quarter March 2021	Corresponding Qtr. of prev. year June 2020
I. Material cost									
1.Bricks and Tiles Products									
1	Bricks	9"x4.5"x2	1000 Nos	16.30	163.64	151.51	145.45	8.00	12.50
2	Brick Jelly	20mm	cu.m	0.57	125.00	125.00	125.00	0.00	0.00
3	Pressed Tiles	9"x9"	1000 Nos	1.37	176.47	176.47	176.47	0.00	0.00
4	Glazes tiles	9"x9"	1 No.	0.38	187.50	166.67	166.67	12.50	12.50
5	Ceramic tiles	9"x9"	1 No.	0.87	312.50	281.25	281.25	11.11	11.11
2.Sand stone and other Quarry Products									
6	Sand for mortar	River	cu.m	4.64	324.34	405.62	405.62	-20.04	-20.04
7	Stone Jelly (HBSJ)	40mm	cu.m	3.60	174.42	167.40	139.61	4.19	24.93
8	Stone Jelly (HBSJ)	20mm	cu.m	0.32	166.67	160.00	140.00	4.17	19.05
9	Stone Jelly Chips (HBSJ)	10mm	cu.m	1.63	169.49	162.71	142.37	4.17	19.05
10	Rough stone		cu.m	0.42	171.53	151.74	151.74	13.04	13.04
11	Bond stone		cu.m	0.55	150.27	139.63	139.63	7.62	7.62
3.Cement and Lime									
12	Cement		M.T	12.26	147.67	138.04	134.83	6.98	9.52
13	Lime stone		cu.m	0.15	111.11	111.11	103.70	0.00	7.14
4.Timber and other wood									
14	TW Frame		sq.m	1.29	250.00	198.28	198.28	26.09	26.09
15	TW Panel door shutter		sq.m	0.86	250.84	231.24	231.24	8.47	8.47
16	Solid PVC door shutter		sq.m	0.45	145.83	133.33	133.33	9.38	9.38
5.Iron and Steel									
17	Mild Steel Rods	10mm	MT	1.35	140.22	131.52	104.35	6.61	34.38
18	Ribbed Tar Steel (RTS)	8mm	MT	2.20	139.36	131.28	104.26	6.16	33.67
19	Binding Wire		Kg	0.46	127.73	127.73	117.65	0.00	8.57
20	Door catch		No.	0.02	225.00	225.00	212.50	0.00	5.88
21	Hold fast		No.	0.06	281.25	281.25	271.88	0.00	3.45
22	Tower bolt receiver		No.	0.04	215.69	213.73	213.73	0.92	0.92
23	Steel window ventilator		Kg	1.18	208.70	208.70	191.30	0.00	9.09
6.Ancillary Materials									
25	Ready mix Prime paint		Ltr	0.10	120.00	119.51	118.54	0.41	1.23
26	Enamel paint		Ltr	0.05	157.26	157.26	154.84	0.00	1.56
27	Cement paint		Kg	1.83	195.65	195.65	193.48	0.00	1.12
28	Matt paint		Ltr	0.15	126.09	126.09	123.91	0.00	1.75
7.Electrical Fittings									
29	1.5sqmm copper cable		100 metre	0.44	199.05	170.62	132.70	16.67	50.00
30	PVC Pipe	20mm	1metre	0.13	432.43	432.43	432.43	0.00	0.00
31	PVC bend		No.	0.04	216.67	216.67	216.67	0.00	0.00
32	PVC tee		No.	0.03	150.00	233.33	222.22	-35.71	-32.50
33	5amps 5 pin at switch board	itself	No.	0.00	115.38	115.38	115.38	0.00	0.00
34	5amps 5 pin non interlocking switch		No.	0.01	150.00	140.00	125.00	7.14	20.00
35	Ceiling Rose		No.	0.02	148.79	123.99	123.99	20.00	20.00
36	Bakelite pattern Holder		No.	0.02	166.67	138.89	116.67	20.00	42.86
37	Bulk Head Fittings		No.	0.01	222.22	222.22	155.56	0.00	42.86
38	8 SWG GI wire		kg	0.04	135.14	126.13	124.32	7.14	8.70
39	32 amps 500V fuse unit		No.	0.01	183.33	183.33	166.67	0.00	10.00
40	Junction box		No.	0.04	433.33	433.33	400.00	0.00	8.33
41	Jointbox		No.	0.01	160.00	160.00	120.00	0.00	33.33
42	Hylem sheet		No.	0.02	135.25	135.25	131.15	0.00	3.12
43	Flush type switch		No.	0.03	150.00	150.00	150.00	0.00	0.00
44	11wCFL bulb	11w	No.	0.01	166.67	166.67	166.67	0.00	0.00
45	Calling bell		No.	0.01	241.67	241.67	166.67	0.00	45.00
46	25amps single phase ELCB		No.	0.23	113.56	113.56	113.56	0.00	0.00
47	25mm GI pipe line	25mm	1 metre	0.05	150.86	143.68	137.93	5.00	9.37
48	GI Pipe 20mm(Earth pit)	20mm	1 metre	0.01	181.82	159.09	154.55	14.29	17.65
49	40mm dia GI pipe	40mm	1 metre	0.01	170.45	170.45	159.09	0.00	7.14
50	15mm GI Pipe	15mm	1 metre	0.01	177.23	172.30	160.00	2.86	10.77
51	GI reducers		No.	0.00	257.14	257.14	228.57	0.00	12.50
8.Sanitary & Water Supply									
52	Indian Water Closet		No.	0.06	150.00	150.00	150.00	0.00	0.00
53	S.W.Gully Trap	6"x4"	No.	0.02	208.00	200.00	200.00	4.00	4.00
54	S.W.Bend	4"	No.	0.01	154.93	140.85	140.85	10.00	10.00
55	GI Pipe 20mm dia Hotwater	20mm	1 metre	0.09	152.38	138.10	130.48	10.34	16.79
56	Stone ware pipe 100mm	100mm	1 metre	0.23	209.06	195.12	167.25	7.14	25.00
57	PVC 32mm dia	32mm	1 metre	0.14	149.12	135.09	122.81	10.38	21.42
58	PVC 20mm dia	20mm	1 metre	0.02	146.49	146.49	141.19	0.00	3.75
59	PVC rain water down fall 110mm	110mm	1 metre	0.18	201.35	179.77	161.79	12.00	24.45
60	HDPE Cylindrical		No.	0.48	246.15	246.15	246.15	0.00	0.00
II.Labour cost									
1. Skilled Labour									
61	Mason I & II (Brick Layer I & II Class)		No.	10.78	205.41	205.41	205.41	0.00	0.00
62	Carpenter		No.	1.18	177.78	177.78	177.78	0.00	0.00
63	Painter		No.	1.47	200.00	200.00	200.00	0.00	0.00
64	Fitter I & II		No.	0.74	187.50	187.50	187.50	0.00	0.00
65	Plumber		No.	0.13	177.78	177.78	177.78	0.00	0.00
66	Electrician Gr I & II		No.	0.41	207.41	200.00	200.00	3.70	3.70
2.Unskilled Labour									
67	Mazdoor-men		No.	9.27	166.67	166.67	166.67	0.00	0.00
68	Mazdoor-Women		No.	7.93	200.00	200.00	200.00	0.00	0.00
70	Helper		No.	0.35	300.00	250.00	250.00	20.00	20.00
III.Other expenses									
71	Mixing Charges per mortar		cu.m	0.53	500.00	200.00	200.00	150.00	150.00
72	E.B.Connection charges		No.	0.55	130.90	180.65	131.94	-27.54	-0.79
73	Contingencies	2.5%		2.22	187.18	183.58	178.34	1.96	4.96
74	Supervision charges	10%		8.89	187.18	183.58	178.34	1.96	4.96
				100.00					

TABLE - 1
BUILDING CONSTRUCTION COST INDEX

CENTRE : COIMBATORE

QUARTER : JUNE 2021
(BASE YEAR:2011-12=100)

Sl. No.	ITEM	Weight	INDEX			% Variation	
			Current Quarter June 2021	Previous Quarter March 2021	Corresponding Qtr. of prev. year June 2020	Previous Quarter June 2021	Corresponding Qtr. of prev. year June 2020
I	<u>MATERIAL COST</u>						
1	BRICKS & TILES	19.49	170.53	158.58	153.52	7.53	11.08
2	SAND, STONE & OTHER QUARRY PRODUCTS	11.17	234.42	263.44	250.92	-11.02	-6.58
3	CEMENT & LIME	12.41	147.22	137.71	134.45	6.91	9.50
4	TIMBER & OTHER WOODS	2.61	232.28	197.98	197.98	17.32	17.32
5	IRON & STEEL	5.31	156.49	150.92	127.93	3.69	22.32
6	ANCILLIARY MATERIALS	2.14	186.14	186.12	184.00	0.01	1.17
7	ELECTRICAL FITTINGS	1.17	204.61	194.01	175.57	5.46	16.54
8	SANITARY WARE & WATER SUPPLY	1.23	206.53	197.85	187.96	4.39	9.88
II	<u>LABOUR COST</u>						
1	SKILLED LABOUR	14.72	201.56	201.35	201.35	0.10	0.10
2	UNSKILLED LABOUR	17.56	184.41	183.40	183.40	0.55	0.55
III	<u>OTHER EXPENSES</u>						
1	MIXING CHARGES	0.53	500.00	200.00	200.00	150.00	150.00
2	E.B.SERVICE CONNECTION CHARGES	0.55	130.90	180.65	131.94	-27.54	-0.79
3	CONTINGENCIES	2.22	187.18	183.58	178.34	1.96	4.96
4	SUPERVISION CHARGES	8.89	187.18	183.58	178.34	1.96	4.96
I	<i>MATERIAL COST</i>	55.54	181.84	178.80	170.89	1.70	6.41
II	<i>LABOUR COST</i>	32.27	192.23	191.59	191.59	0.34	0.34
III	<i>OTHER EXPENSES</i>	12.19	198.14	184.16	177.18	7.59	11.83
	BUILDING CONSTRUCTION COST INDEX	100	187.18	183.58	178.34	1.96	4.96

BUILDING CONSTRUCTION COST INDEX - ITEM-WISE INDEX

Quarter : June 2021
(Base year:2011-12=100)

Centre : Erode

Sl. No.	Item	Specification	Unit	Weight	INDEX			% Variation	
					Current Quarter June 2021	Previous Quarter March 2021	Corresponding Qtr. of prev. year June 2020	Previous Quarter March 2021	Corresponding Qtr. of prev. year June 2020
I. Material cost									
1.Bricks and Tiles Products									
1	Bricks	9"x4.5"x2	1000 Nos	17.89	162.96	148.14	136.30	10.00	19.56
2	Brick Jelly	20mm	cu.m	1.03	117.50	112.50	112.50	4.44	4.44
3	Pressed Tiles	9"x9"	1000 Nos	2.08	250.00	250.00	145.83	0.00	71.43
4	Gazes tiles	9"x9"	1 No.	0.40	212.77	212.77	191.49	0.00	11.11
5	Ceramic tiles	9"x9"	1 No.	0.95	246.15	215.38	215.38	14.29	14.29
2.Sand stone and other Quarry Products									
6	Sand for mortar	River	cu.m	3.35	481.35	601.97	601.97	-20.04	-20.04
7	Stone Jelly (HBSJ)	40mm	cu.m	2.94	134.40	128.37	122.15	4.69	10.03
8	Stone Jelly (HBSJ)	20mm	cu.m	0.33	129.92	106.70	106.70	21.76	21.76
9	Stone Jelly Chips (HBSJ)	10mm	cu.m	1.83	112.43	103.78	99.46	8.33	13.04
10	Rough stone		cu.m	0.45	269.79	245.95	245.95	9.69	9.69
11	Bond stone		cu.m	0.59	225.27	208.97	208.97	7.80	7.80
3.Cement and Lime									
12	Cement		M.T	13.07	151.86	135.70	135.70	11.90	11.90
13	Lime stone		cu.m	0.28	162.50	120.00	120.00	35.42	35.42
4.Timber and other wood									
14	TW Frame		sq.m	2.81	134.04	131.91	127.66	1.61	5.00
15	TW Panel door shutter		sq.m	0.73	184.46	172.16	172.16	7.14	7.14
16	Solid PVC door shutter		sq.m	0.40	135.27	123.50	123.50	9.52	9.52
5.Iron and Steel									
17	Mild Steel Rods	10mm	MT	1.46	131.18	129.03	101.08	1.67	29.79
18	Ribbed Tar Steel (RTS)	8mm	MT	2.43	137.82	137.82	107.77	0.00	27.88
19	Binding Wire		Kg	0.50	146.06	141.08	119.50	3.53	22.22
20	Door catch		No.	0.03	175.00	162.50	162.50	7.69	7.69
21	Hold fast		No.	0.06	234.38	225.00	218.75	4.17	7.14
22	Tower bolt receiver		No.	0.05	136.36	123.64	100.00	10.29	36.36
23	Steel window ventilator		Kg	1.47	164.18	149.25	149.25	10.00	10.00
6.Ancillary Materials									
25	Ready mix Prime paint		Ltr	0.10	151.63	141.18	141.18	7.41	7.41
26	Ready mix Synthetic Enamel paint		Ltr	0.05	163.64	145.45	145.45	12.50	12.50
27	Cement paint		Kg	1.96	244.57	244.57	228.26	0.00	7.14
28	Matt paint		Ltr	0.11	125.00	125.00	121.88	0.00	2.56
7.Electrical Fittings									
29	1.5somm copper cable		100 mete	0.53	146.67	146.67	146.67	0.00	0.00
30	PVC Pipe	20mm	1metre	0.11	277.01	277.01	277.01	0.00	0.00
31	PVC bend		No.	0.09	320.00	320.00	320.00	0.00	0.00
32	PVC tee		No.	0.04	208.33	208.33	208.33	0.00	0.00
33	5amps 5 pin at switch board itself		No.	0.00	115.38	115.38	107.69	0.00	7.14
34	5amps 5 pin non interlocking switch		No.	0.00	450.00	420.00	400.00	7.14	12.50
35	Ceiling Rose		No.	0.02	250.00	233.33	208.33	7.14	20.00
36	Bakelite pattern Holder		No.	0.02	207.69	207.69	169.23	0.00	22.73
37	Bulk Head Fittings		No.	0.01	266.67	216.67	166.67	23.08	60.00
38	8 SWG GI wire		kg	0.04	202.40	202.40	162.50	0.00	24.55
39	32 amps 500V fuse unit		No.	0.01	171.43	171.43	171.43	0.00	0.00
40	Junction box		No.	0.04	733.33	446.67	400.00	64.18	83.33
41	Jointbox		No.	0.02	173.33	133.33	133.33	30.00	30.00
42	Hylem sheet		No.	0.02	131.15	124.59	124.59	5.26	5.26
43	Flush type switch		No.	0.04	192.86	192.86	142.86	0.00	35.00
44	11wCFL bulb	11w	No.	0.01	133.33	133.33	133.33	0.00	0.00
45	Calling bell		No.	0.01	266.67	260.61	254.55	2.33	4.76
46	25amps single phase ELCB		No.	0.25	112.93	112.93	112.93	0.00	0.00
47	25mm GI pipe line	25mm	1 metre	0.05	323.28	323.28	306.03	0.00	5.63
48	GI Pipe 20mm(Earth pit)	20mm	1 metre	0.01	236.11	236.11	166.67	0.00	41.67
49	40mm dia GI pipe	40mm	1 metre	0.01	228.77	228.77	224.06	0.00	2.11
50	15mm GI Pipe	15mm	1 metre	0.01	362.90	362.90	354.84	0.00	2.27
51	GI reducers		No.	0.00	153.33	153.33	146.67	0.00	4.55
8.Sanitary & Water Supply									
52	Indian Water Closet		No.	0.05	166.67	153.33	153.33	8.70	8.70
53	S.W. Gully Trap	6"x4"	No.	0.01	266.67	266.67	213.33	0.00	25.00
54	S.W. Bend	4"	No.	0.01	490.91	490.91	481.82	0.00	1.89
55	GI Pipe 20mm dia Hotwater lir	20mm	1 metre	0.07	291.68	250.19	186.69	16.58	56.24
56	Stone ware pipe 100mm	100mm	1 metre	0.14	675.00	400.00	300.00	68.75	125.00
57	PVC 32mm dia	32mm	1 metre	0.13	219.51	219.51	207.32	0.00	5.88
58	PVC 20mm dia	20mm	1 metre	0.02	244.44	231.11	222.22	5.77	10.00
59	PVC rain water down fall 110mm	110mm	1 metre	0.26	280.00	280.00	276.00	0.00	1.45
60	HDPE Cylindrical		No.	0.51	138.46	138.46	138.46	0.00	0.00
II.Labour cost									
1. Skilled Labour									
61	Mason I & II (Brick Layer I & II Class)		No.	10.01	200.00	175.00	175.00	14.29	14.29
62	Carpenter		No.	0.99	214.29	200.00	200.00	7.14	7.14
63	Painter		No.	1.18	233.33	216.67	216.67	7.69	7.69
64	Fitter I & II		No.	0.59	233.33	216.67	216.67	7.69	7.69
65	Plumber		No.	0.09	216.67	200.00	200.00	8.33	8.33
66	Electrician Gr I & II		No.	0.39	216.67	200.00	200.00	8.33	8.33
2.Unskilled Labour									
67	Mazdoor-men		No.	6.52	254.55	254.55	181.82	0.00	40.00
68	Mazdoor-Women		No.	6.81	200.00	175.00	160.00	14.29	25.00
70	Helper		No.	0.38	250.00	250.00	250.00	0.00	0.00
III.Other expenses									
71	Mixing Charges per mortar		cu.m	1.41	200.00	160.00	160.00	25.00	25.00
72	E.B.Connection charges		No.	0.60	183.98	183.98	180.39	0.00	1.99
73	Contingencies	2.5%		2.22	193.33	184.18	175.25	4.97	10.32
74	Supervision charges	10%		8.89	193.33	184.18	175.25	4.97	10.32
				100.00					2.21

TABLE - 1
BUILDING CONSTRUCTION COST INDEX

CENTRE : ERODE

QUARTER : JUNE 2021
(BASE YEAR:2011-12=100)

Sl. No.	ITEM	Weight	INDEX			% Variation	
			Current Quarter June 2021	Previous Quarter March 2021	Corresponding Qtr. of prev. year June 2020	Previous Quarter June 2021	Corresponding Qtr. of prev. year June 2020
I	<u>MATERIAL COST</u>						
1	BRICKS & TILES	22.34	173.39	159.98	140.45	8.38	23.46
2	SAND, STONE & OTHER QUARRY PRODUCTS	9.51	264.51	300.57	297.81	-12.00	-11.18
3	CEMENT & LIME	13.35	152.08	135.37	135.37	12.35	12.35
4	TIMBER & OTHER WOODS	3.93	143.48	138.50	135.46	3.59	5.92
5	IRON & STEEL	6.00	144.48	139.62	118.59	3.48	21.83
6	ANCILLIARY MATERIALS	2.23	232.40	231.50	216.99	0.39	7.10
7	ELECTRICAL FITTINGS	1.36	199.04	189.61	182.96	4.98	8.79
8	SANITARY WARE & WATER SUPPLY	1.20	255.05	220.62	202.44	15.61	25.99
II	<u>LABOUR COST</u>						
1	SKILLED LABOUR	13.26	206.14	183.36	183.36	12.42	12.42
2	UNSKILLED LABOUR	13.70	227.33	214.91	172.87	5.78	31.50
III	<u>OTHER EXPENSES</u>						
1	MIXING CHARGES	1.41	200.00	160.00	160.00	25.00	25.00
2	E.B.SERVICE CONNECTION CHARGES	0.60	183.98	183.98	180.39	0.00	1.99
3	CONTINGENCIES	2.22	193.33	184.18	170.21	4.97	13.58
4	SUPERVISION CHARGES	8.89	193.33	184.18	170.21	4.97	13.58
I	<i>MATERIAL COST</i>	59.92	182.66	177.91	166.82	2.67	9.50
II	<i>LABOUR COST</i>	26.96	216.91	199.40	178.03	8.78	21.84
III	<i>OTHER EXPENSES</i>	13.12	193.62	181.57	169.57	6.64	14.19
	BUILDING CONSTRUCTION COST INDEX	100	193.33	184.18	170.21	4.97	13.58

TABLE - 1A
BUILDING CONSTRUCTION COST INDEX - ITEM-WISE INDEX

Quarter : June 2021
(Base year:2011-12=100)

Centre : Tiruchirappalli

Sl. No.	Item	Specification	Unit	Weight	INDEX			% Variation	
					Current Quarter June 2021	Previous Quarter March 2021	Corresponding Qtr. of prev. year June 2020	Previous Quarter March 2021	Corresponding Qtr. of prev. year June 2020
I. Material cost									
1.Bricks and Tiles Products									
1	Bricks	9"x4.5"x2.25"	1000 Nos.	14.01	183.91	172.41	160.92	6.67	14.29
2	Brick Jelly	20mm	cu.m	0.55	184.42	184.42	182.29	0.00	1.17
3	Pressed Tiles	9"x9"	1000 Nos.	1.80	126.83	126.83	121.95	0.00	4.00
4	Glazes tiles	9"x9"	1 No.	0.14	380.95	357.14	357.14	6.67	6.67
5	Ceramic tiles	9"x9"	1 No.	0.59	320.00	300.00	300.00	6.67	6.67
2.Sand stone and other Quarry Products									
6	Sand for mortar	River	cu.m	4.77	856.99	856.99	714.15	0.00	20.00
7	Stone Jelly (HBSJ)	40mm	cu.m	2.98	140.48	140.61	137.54	-0.09	2.14
8	Stone Jelly (HBSJ)	20mm	cu.m	0.34	125.36	125.36	121.88	0.00	2.86
9	Stone Jelly Chips (HBSJ)	10mm	cu.m	1.36	120.67	120.75	117.79	-0.07	2.44
10	Rough stone		cu.m	0.46	252.43	151.74	151.74	66.36	66.36
11	Bond stone		cu.m	0.00	0.00	0.00	0.00	0.00	0.00
3.Cement and Lime									
12	Cement		M.T	13.15	152.85	139.84	136.59	9.30	11.90
13	Lime stone		cu.m	0.21	416.67	250.00	250.00	66.67	66.67
4.Timber and other wood									
14	TW Frame		sq.m	1.05	124.39	117.34	117.34	6.01	6.01
15	TW Panel door shutter		sq.m	0.72	146.75	146.75	146.75	0.00	0.00
16	Solid PVC door shutter		sq.m	0.42	165.85	165.85	165.85	0.00	0.00
5.Iron and Steel									
17	Mild Steel Rods	10mm	MT	1.50	138.30	144.68	106.38	-4.41	30.00
18	Ribbed Tar Steel (RTS)	8mm	MT	2.44	135.98	143.31	110.88	-5.11	22.64
19	Binding Wire		Kg	0.55	135.85	120.75	108.68	12.50	25.00
20	Door catch		No.	0.04	130.74	130.74	130.74	0.00	0.00
21	Hold fast		No.	0.03	333.33	312.50	312.50	6.67	6.67
22	Tower bolt receiver		No.	0.03	130.08	130.08	130.08	0.00	0.00
23	Steel window ventilator		Kq	1.28	208.70	208.70	191.30	0.00	9.09
6.Ancillary Materials									
25	Ready mix Prime paint		Ltr	0.11	137.93	137.93	137.93	0.00	0.00
26	Enamel paint		Ltr	0.06	150.00	150.00	150.00	0.00	0.00
27	Cement paint		Kg	1.99	173.91	163.04	163.04	6.67	6.67
28	Matt paint		Ltr	0.19	113.55	106.23	106.23	6.90	6.90
7.Electrical Fittings									
29	1.5sqmm copper cable		100 meter	0.62	129.28	129.28	129.28	0.00	0.00
30	PVC Pipe	20mm	1metre	0.10	200.00	185.71	185.71	7.69	7.69
31	PVC bend		No.	0.03	266.67	278.10	278.10	-4.11	-4.11
32	PVC tee		No.	0.02	301.59	233.33	233.33	29.25	29.25
33	5amps 5 pin at switch board	itself	No.	0.00	153.33	153.33	153.33	0.00	0.00
34	5amps 5 pin non interlocking switch		No.	0.00	145.45	145.45	145.45	0.00	0.00
35	Ceiling Rose		No.	0.02	166.67	126.67	126.67	31.58	31.58
36	Bakelite pattern Holder		No.	0.02	182.35	152.94	152.94	19.23	19.23
37	Bulk Head Fittings		No.	0.01	250.00	222.22	222.22	12.50	12.50
38	8 SWG GI wire		kg	0.04	215.69	160.43	160.43	34.44	34.44
39	32 amps 500V fuse unit		No.	0.01	225.86	144.14	144.14	56.70	56.70
40	Junction box		No.	0.04	333.33	304.00	304.00	9.65	9.65
41	Jointbox		No.	0.02	333.33	243.33	243.33	36.99	36.99
42	Hylem sheet		No.	0.01	141.30	130.63	130.63	8.17	8.17
43	Flush type switch		No.	0.05	129.70	129.70	129.70	0.00	0.00
44	11wCFL bulb	11w	No.	0.01	173.33	173.33	173.33	0.00	0.00
45	Calling bell		No.	0.01	201.20	201.20	201.20	0.00	0.00
46	25amps single phase ELCB		No.	0.25	141.51	141.51	141.51	0.00	0.00
47	25mm GI pipe line	25mm	1 metre	0.05	230.43	230.43	230.43	0.00	0.00
48	GI Pipe 20mm(Earth pit)	20mm	1 metre	0.01	170.83	166.67	166.67	2.50	2.50
49	40mm dia GI pipe	40mm	1 metre	0.01	212.93	110.88	110.88	92.02	92.02
50	15mm GI Pipe	15mm	1 metre	0.01	217.46	217.46	217.46	0.00	0.00
51	GI reducers		No.	0.01	128.77	191.23	191.23	-32.66	-32.66
8.Sanitary & Water Supply									
52	Indian Water Closet		No.	0.14	152.00	141.18	141.18	7.67	7.67
53	S.W.Gully Trap	6"x4"	No.	0.03	197.50	142.50	142.50	38.60	38.60
54	S.W.Bend	4"	No.	0.01	166.67	154.76	154.76	7.69	7.69
55	GI Pipe 20mm dia Hotwater	20mm	1 metre	0.11	131.82	131.82	131.82	0.00	0.00
56	Stone ware pipe 100mm	100mm	1 metre	0.36	134.29	133.33	114.29	0.71	17.50
57	PVC 32mm dia	32mm	1 metre	0.15	219.15	117.23	117.23	86.93	86.93
58	PVC 20mm dia	20mm	1 metre	0.02	281.08	198.92	198.92	41.30	41.30
59	PVC rain water down fall 110mm	110mm	1 metre	0.30	148.20	124.32	124.32	19.21	19.21
60	HDPE Cylindrical		No.	0.52	138.46	138.46	138.46	0.00	0.00
II.Labour cost									
1. Skilled Labour									
61	Mason I & II (Brick Layer I & II Class)		No.	11.72	151.35	151.35	129.73	0.00	16.67
62	Carpenter		No.	1.18	169.70	169.70	145.45	0.00	16.67
63	Painter		No.	1.50	160.00	146.67	133.33	9.09	20.00
64	Fitter I & II		No.	0.80	150.00	137.50	125.00	9.09	20.00
65	Plumber		No.	0.13	150.00	137.50	125.00	9.09	20.00
66	Electrician Gr I & II		No.	0.53	125.00	125.00	125.00	0.00	0.00
2.Unskilled Labour									
67	Mazdoor-men		No.	8.55	154.39	140.35	182.46	10.00	-15.38
68	Mazdoor-Women		No.	7.84	153.85	131.87	131.87	16.67	16.67
70	Helper		No.	0.27	289.86	253.62	253.62	14.29	14.29
III.Other expenses									
71	Mixing Charges per mortar		cu.m	2.00	128.57	117.71	117.71	9.22	9.22
72	E.B.Connection charges		No.	0.60	169.06	167.67	167.67	0.83	0.83
73	Contingencies	2.5%		2.22	197.19	187.80	176.15	5.00	11.94
74	Supervision charges	10%		8.89	197.19	187.80	176.15	5.00	11.94
				100.00					

TABLE - 1
BUILDING CONSTRUCTION COST INDEX

CENTRE : TIRUCHIRAPPALLI

QUARTER : JUNE 2021
(BASE YEAR:2011-12=100)

Sl. No.	ITEM	Weight	INDEX			% Variation	
			Current Quarter June 2021	Previous Quarter March 2021	Corresponding Qtr. of prev. year June 2020	Previous Quarter June 2021	Corresponding Qtr. of prev. year June 2020
I	<u>MATERIAL COST</u>						
1	BRICKS & TILES	17.09	184.31	174.00	164.00	5.93	12.39
2	SAND, STONE & OTHER QUARRY PRODUCTS	9.91	487.38	482.77	412.55	0.95	18.14
3	CEMENT & LIME	13.36	157.00	141.57	138.37	10.90	13.46
4	TIMBER & OTHER WOODS	2.19	139.70	136.32	136.32	2.48	2.48
5	IRON & STEEL	5.86	153.35	156.50	128.31	-2.01	19.52
6	ANCILLIARY MATERIALS	2.35	166.67	156.87	156.87	6.25	6.25
7	ELECTRICAL FITTINGS	1.37	163.66	155.88	155.88	4.99	4.99
8	SANITARY WARE & WATER SUPPLY	1.63	150.51	133.43	129.20	12.79	16.49
II	<u>LABOUR COST</u>						
1	SKILLED LABOUR	15.85	152.57	134.60	130.81	13.35	16.64
2	UNSKILLED LABOUR	16.66	156.29	159.78	159.78	-2.18	-2.18
III	<u>OTHER EXPENSES</u>						
1	MIXING CHARGES	2.00	128.57	117.71	117.71	9.22	9.22
2	E.B.SERVICE CONNECTION CHARGES	0.60	169.06	167.67	167.67	0.83	0.83
3	CONTINGENCIES	2.22	197.19	189.00	176.15	4.33	11.94
4	SUPERVISION CHARGES	8.89	197.19	189.00	176.15	4.33	11.94
I	<u>MATERIAL COST</u>	53.78	225.88	216.98	196.86	4.10	14.74
II	<u>LABOUR COST</u>	32.51	154.48	147.50	145.65	4.73	6.06
III	<u>OTHER EXPENSES</u>	13.72	185.94	177.66	167.25	4.66	11.18
	BUILDING CONSTRUCTION COST INDEX	100	197.19	189.00	176.15	4.33	11.94

BUILDING CONSTRUCTION COST INDEX - ITEM-WISE INDEX

Quarter : June 2021
(Base year:2011-12=100)

Centre : Thanjavur

Sl. No.	Item	Specification	Unit	Weight	INDEX			% Variation		
					Current Quarter June 2021	Previous Quarter March 2021	Corresponding Qtr. of prev. year June 2020	Previous Quarter March 2021	Corresponding Qtr. of prev. year June 2020	
I. Material cost										
1.Bricks and Tiles Products										
1	Bricks	9"x4.5"x2.25"	1000 Nos.	12.18	186.67	181.33	146.67	2.94	27.27	
2	Brick Jelly	20mm	cu.m	0.59	139.87	137.74	135.47	1.55	3.25	
3	Pressed Tiles	9"x9"	1000 Nos.	1.58	156.21	150.63	150.63	3.70	3.70	
4	Glazes tiles	9"x9"	1 No.	0.14	439.02	439.02	414.63	0.00	5.88	
5	Ceramic tiles	9"x9"	1 No.	0.61	341.46	341.46	312.20	0.00	9.38	
2.Sand stone and other Quarry Products										
6	Sand for mortar	River	cu.m	2.78	375.25	345.61	320.87	8.58	16.95	
7	Stone Jelly (HBSJ)	40mm	cu.m	5.42	118.62	115.26	101.63	2.91	16.71	
8	Stone Jelly (HBSJ)	20mm	cu.m	0.46	111.80	105.09	101.63	6.39	10.01	
9	Stone Jelly Chips (HBSJ)	10mm	cu.m	2.38	112.10	112.10	110.46	0.00	1.48	
10	Rough stone		cu.m	0.44	167.27	156.36	145.45	6.98	15.00	
11	Bond stone		cu.m	0.61	166.89	164.24	164.24	1.61	1.61	
3.Cement and Lime										
12	Cement		M.T	13.15	150.82	140.98	140.98	6.98	6.98	
13	Lime stone		cu.m	0.28	126.67	110.15	110.15	15.00	15.00	
4.Timber and other wood										
14	TW Frame		sq.m	0.83	277.78	263.16	248.54	5.56	11.76	
15	TW Panel door shutter		sq.m	0.88	198.80	192.77	186.75	3.13	6.45	
16	Solid PVC door shutter		sq.m	0.49	154.17	154.17	150.00	0.00	2.78	
5.Iron and Steel										
17	Mild Steel Rods	10mm	MT	1.54	145.83	139.58	114.58	4.48	27.27	
18	Ribbed Tar Steel (RTS)	8mm	MT	2.52	144.82	136.66	112.19	5.97	29.09	
19	Binding Wire		Kg	0.57	125.93	124.44	114.07	1.19	10.39	
20	Door catch		No.	0.03	149.07	124.22	111.80	20.00	33.33	
21	Hold fast		No.	0.06	222.22	190.48	158.73	16.67	40.00	
22	Tower bolt receiver		No.	0.02	177.78	177.78	177.78	0.00	0.00	
23	Steel window ventilator		Kg	1.29	191.30	191.30	173.91	0.00	10.00	
6.Ancillary Materials										
25	Ready mix Prime paint		Ltr	0.11	142.32	142.32	139.83	0.00	1.79	
26	Ready mix Synthetic Enamel paint		Ltr	0.06	152.89	152.89	148.76	0.00	2.78	
27	Cement paint		Kg	1.92	125.00	113.64	113.64	10.00	10.00	
28	Matt paint		Ltr	0.10	142.86	114.29	114.29	25.00	25.00	
7.Electrical Fittings										
29	1.5sqmm copper cable		100 meter	0.62	123.82	123.82	123.82	0.00	0.00	
30	PVC Pipe	20mm	1metre	0.11	347.22	347.22	347.22	0.00	0.00	
31	PVC bend		No.	0.02	666.67	666.67	500.00	0.00	33.33	
32	PVC tee		No.	0.01	947.37	947.37	631.58	0.00	50.00	
33	5amps 5 pin at switch board itself		No.	0.00	178.57	142.86	142.86	25.00	25.00	
34	5amps 5 pin non interlocking switch		No.	0.00	227.27	181.82	163.64	25.00	38.89	
35	Ceiling Rose		No.	0.02	133.33	133.33	133.33	0.00	0.00	
36	Bakelite pattern Holder		No.	0.02	212.12	212.12	181.82	0.00	16.67	
37	Bulk Head Fittings		No.	0.01	250.00	250.00	208.33	0.00	20.00	
38	8 SWG GI wire		kg	0.04	211.86	190.68	148.31	11.11	42.86	
39	32 amps 500V fuse unit		No.	0.01	188.24	188.24	176.47	0.00	6.67	
40	Junction box		No.	0.02	166.67	166.67	166.67	0.00	0.00	
41	Jointbox		No.	0.01	111.11	111.11	111.11	0.00	0.00	
42	Hylem sheet		No.	0.01	147.33	134.57	129.93	9.48	13.39	
43	Flush type switch		No.	0.05	129.03	129.03	129.03	0.00	0.00	
44	11wCFL bulb	11w	No.	0.02	126.05	113.45	109.24	11.11	15.38	
45	Calling bell		No.	0.01	365.59	322.58	333.33	13.33	9.68	
46	25amps single phase ELCB		No.	0.25	138.80	132.49	123.03	4.76	12.82	
47	25mm GI pipe line	25mm	1 metre	0.05	141.91	133.04	133.04	6.67	6.67	
48	GI Pipe 20mm(Earth pit)	20mm	1 metre	0.01	194.44	187.50	152.78	3.70	27.27	
49	40mm dia GI pipe	40mm	1 metre	0.01	223.00	125.44	111.50	77.78	100.00	
50	15mm GI Pipe	15mm	1 metre	0.01	243.90	243.90	243.90	0.00	0.00	
51	GI reducers		No.	0.01	148.65	135.14	121.62	10.00	22.22	
8.Sanitary & Water Supply										
52	Indian Water Closet		No.	0.07	162.79	158.14	158.14	2.94	2.94	
53	S.W.Gully Trap	6"x4"	No.	0.01	133.33	133.33	133.33	0.00	0.00	
54	S.W.Bend	4"	No.	0.01	105.56	105.56	105.56	0.00	0.00	
55	GI Pipe 20mm dia Hotwater line	20mm	1 metre	0.08	139.70	139.70	139.70	0.00	0.00	
56	Stone ware pipe 100mm	100mm	1 metre	0.30	105.88	105.88	105.88	0.00	0.00	
57	PVC 32mm dia	32mm	1 metre	0.15	250.00	217.39	217.39	15.00	15.00	
58	PVC 20mm dia	20mm	1 metre	0.02	383.56	493.15	328.77	-22.22	16.67	
59	PVC rain water down fall		110mm	1 metre	0.31	197.28	197.28	149.66	0.00	31.82
60	HDPE Cylindrical		No.	0.52	147.69	147.69	147.69	0.00	0.00	
II.Labour cost										
1. Skilled Labour										
61	Mason I & II (Brick Layer I & II Class)		No.	12.61	172.15	172.15	151.90	0.00	13.33	
62	Carpenter		No.	1.23	183.53	176.47	157.65	4.00	16.42	
63	Painter		No.	1.51	200.00	194.67	178.67	2.74	11.94	
64	Fitter I & II		No.	0.76	192.00	186.67	186.67	2.86	2.86	
65	Plumber		No.	0.12	192.00	186.67	186.67	2.86	2.86	
66	Electrician Gr I & II		No.	0.50	192.00	186.67	178.67	2.86	7.46	
2.Unskilled Labour										
67	Mazdoor-men		No.	8.32	180.36	174.55	174.55	3.33	3.33	
68	Mazdoor-Women		No.	7.82	204.44	200.00	200.00	2.22	2.22	
70	Helper		No.	0.24	321.29	321.29	321.29	0.00	0.00	
III.Other expenses										
71	Mixing Charges per mortar		cu.m	1.33	217.39	195.65	152.17	11.11	42.86	
72	E.B.Connection charges		No.	0.58	124.68	121.98	109.92	2.21	13.43	
73	Contingencies	2.5%		2.22	176.97	170.89	157.96	3.56	12.04	
74	Supervision charges	10%		8.89	176.97	170.89	157.96	3.56	12.04	
				100.00					18.54	

TABLE - 1
BUILDING CONSTRUCTION COST INDEX

CENTRE : THANJAVUR

QUARTER : JUNE 2021
(BASE YEAR:2011-12=100)

Sl. No.	ITEM	Weight	INDEX			% Variation	
			Current Quarter June 2021	Previous Quarter March 2021	Corresponding Qtr. of prev. year June 2020	Previous Quarter June 2021	Corresponding Qtr. of prev. year June 2020
I	<u>MATERIAL COST</u>						
1	BRICKS & TILES	15.10	190.30	185.33	155.88	2.68	22.08
2	SAND, STONE & OTHER QUARRY PRODUCTS	12.10	180.30	171.19	158.54	5.32	13.73
3	CEMENT & LIME	13.43	150.32	140.34	140.34	7.11	7.11
4	TIMBER & OTHER WOODS	2.21	218.69	210.76	201.90	3.76	8.31
5	IRON & STEEL	6.03	154.18	148.60	126.91	3.75	21.48
6	ANCILLIARY MATERIALS	2.19	127.42	116.15	115.91	9.71	9.93
7	ELECTRICAL FITTINGS	1.34	167.46	163.68	155.53	2.30	7.67
8	SANITARY WARE & WATER SUPPLY	1.47	162.99	160.73	148.59	1.41	9.69
II	<u>LABOUR COST</u>						
1	SKILLED LABOUR	16.73	177.13	175.70	157.36	0.82	12.57
2	UNSKILLED LABOUR	16.38	193.94	188.86	188.86	2.69	2.69
III	<u>OTHER EXPENSES</u>						
1	MIXING CHARGES	1.33	217.39	195.65	152.17	11.11	42.86
2	E.B.SERVICE CONNECTION CHARGES	0.58	124.68	121.98	109.92	2.21	13.43
3	CONTINGENCIES	2.22	176.97	170.89	157.96	3.56	12.04
4	SUPERVISION CHARGES	8.89	176.97	170.89	157.96	3.56	12.04
I	<i>MATERIAL COST</i>	53.87	171.34	163.85	149.41	4.57	14.68
II	<i>LABOUR COST</i>	33.11	185.45	182.21	172.95	1.78	7.23
III	<i>OTHER EXPENSES</i>	13.02	178.75	171.22	155.22	4.40	15.16
	BUILDING CONSTRUCTION COST INDEX	100	176.97	170.89	157.96	3.56	12.04

BUILDING CONSTRUCTION COST INDEX - ITEM-WISE INDEX

Quarter : June 2021
(Base year:2011-12=100)

Centre : Pudukkottai

Sl. No.	Item	Specification	Unit	AVERAGE	Weight	INDEX			% Variation	
						Current Quarter June 2021	Previous Quarter March 2021	Corresponding Qtr. of prev. year June 2020	Previous Quarter March 2021	Corresponding Qtr. of prev. year June 2020
I. Material cost										
1.Bricks and Tiles Products										
1	Bricks	9"x4.5"x2.25"	1000 Nos.	20.226	14.26	207.32	214.63	189.02	-3.41	9.68
2	Brick Jelly	20mm	cu.m	4.62	0.32	221.96	236.68	213.07	-6.22	4.17
3	Pressed Tiles	9"x9"	1000 Nos.	1.10	2.08	163.64	150.00	140.91	9.09	16.13
4	Glazes tiles	9"x9"	1 No.	108.0	0.25	177.78	177.78	162.96	0.00	9.09
5	Ceramic tiles	9"x9"	1 No.	372.0	2.02	133.33	133.33	126.98	0.00	5.00
2.Sand stone and other Quarry Products										
6	Sand for mortar	River	cu.m	24.23	3.37	582.65	611.77	563.27	-4.76	3.44
7	Stone Jelly (HBSJ)	40mm	cu.m	32.40	3.38	126.14	126.15	126.15	0.00	0.00
8	Stone Jelly (HBSJ)	20mm	cu.m	2.77	0.36	124.15	124.15	124.15	0.00	0.00
9	Stone Jelly Chips (HBSJ)	10mm	cu.m	14.28	1.86	139.66	131.90	121.04	5.89	15.38
10	Rough stone		cu.m	10.00	0.51	122.24	122.24	118.85	0.00	2.86
11	Bond stone		cu.m	10.00	0.65	113.16	110.36	108.89	2.54	3.92
3.Cement and Lime										
12	Cement		M.T	13.43	14.15	150.20	140.41	140.41	6.98	6.98
13	Lime stone		cu.m	1.10	0.22	106.79	103.20	103.20	3.49	3.49
4.Timber and other wood										
14	TW Frame		sq.m	3.80	1.06	170.28	170.28	167.18	0.00	1.85
15	TW Panel door shutter		sq.m	6.60	1.65	165.52	151.72	144.83	9.09	14.29
16	Solid PVC door shutter		sq.m	2.56	0.62	134.75	131.21	127.66	2.70	5.56
5.Iron and Steel										
17	Mild Steel Rods	10mm	MT	0.20	1.63	148.97	144.53	120.23	3.07	23.90
18	Ribbed Tar Steel (RTS)	8mm	MT	0.32	2.67	143.08	138.75	115.08	3.12	24.33
19	Binding Wire		Kg	52.52	0.60	128.30	113.21	104.15	13.33	23.19
20	Door catch		No.	4.00	0.03	175.00	156.25	156.25	12.00	12.00
21	Hold fast		No.	12.0	0.11	145.45	145.45	136.36	0.00	6.67
22	Tower bolt receiver		No.	6.00	0.03	233.33	166.67	166.67	40.00	40.00
23	Steel window ventilator		Kg	140.00	1.61	149.25	149.25	144.78	0.00	3.09
6.Ancillary Materials										
25	Ready mix Prime paint		Ltr	3.46	0.13	139.75	139.75	135.17	0.00	3.39
26	Ready mix Synthetic Enamel paint		Ltr	2.93	0.06	156.52	152.17	152.17	2.86	2.86
27	Cement paint		Kg	271.49	2.33	210.00	200.00	200.00	5.00	5.00
28	Matt paint		Ltr	4.44	0.13	193.94	193.94	181.82	0.00	6.67
7.Electrical Fittings										
29	1.5sqmm copper cable		100 meter	2.82	1.02	166.67	142.86	108.57	16.67	53.51
30	PVC Pipe	20mm	1metre	94.11	0.16	160.00	160.00	160.00	0.00	0.00
31	PVC bend		No.	40.00	0.03	375.00	375.00	350.00	0.00	7.14
32	PVC tee		No.	20.00	0.03	162.50	162.50	162.50	0.00	0.00
33	5amps 5 pin at switch board itself		No.	2.00	0.01	158.73	126.98	95.24	25.00	66.67
34	5amps 5 pin non interlocking switch		No.	2.00	0.00	136.36	136.36	136.36	0.00	0.00
35	Ceiling Rose		No.	8.00	0.02	142.86	142.86	142.86	0.00	0.00
36	Bakelite pattern Holder		No.	8.00	0.03	136.84	136.84	136.84	0.00	0.00
37	Bulk Head Fittings		No.	1.00	0.02	169.91	169.91	145.13	0.00	17.07
38	8 SWG GI wire		kg	0.53	0.06	155.15	159.24	159.24	-2.56	-2.56
39	32 amps 500V fuse unit		No.	1.00	0.02	426.97	146.07	134.83	192.31	216.67
40	Junction box		No.	16.00	0.04	340.00	340.00	340.00	0.00	0.00
41	Jointbox		No.	2.00	0.02	161.62	161.62	161.62	0.00	0.00
42	Hylem sheet		No.	0.21	0.02	115.63	115.63	112.50	0.00	2.78
43	Flush type switch		No.	20.00	0.04	125.00	125.00	125.00	0.00	0.00
44	11wCFL bulb	11w	No.	1.00	0.01	216.67	216.67	200.00	0.00	8.33
45	Callina bell		No.	1.00	0.01	250.00	250.00	208.33	0.00	20.00
46	25amps single phase ELCB		No.	1.00	0.18	128.57	128.57	128.57	0.00	0.00
47	25mm GI pipe line	25mm	1 metre	3.00	0.05	134.62	134.62	134.62	0.00	0.00
48	GI Pipe 20mm(Earth pit)	20mm	1 metre	1.00	0.02	157.89	157.89	157.89	0.00	0.00
49	40mm dia GI pipe	40mm	1 metre	0.40	0.01	166.67	166.67	166.67	0.00	0.00
50	15mm GI Pipe	15mm	1 metre	1.00	0.01	157.14	157.14	157.14	0.00	0.00
51	GI reducers		No.	1.00	0.00	108.11	108.11	100.90	0.00	7.14
8.Sanitary & Water Supply										
52	Indian Water Closet		No.	1.00	0.07	143.13	127.80	127.80	12.00	12.00
53	S.W.Gully Trap	6"x4"	No.	1.00	0.01	173.91	160.54	160.54	8.33	8.33
54	S.W.Bend	4"	No.	1.00	0.01	169.01	169.01	140.85	0.00	20.00
55	GI Pipe 20mm dia Hotwater	20mm	1 metre	6.00	0.11	139.76	139.76	139.76	0.00	0.00
56	Stone ware pipe 100mm	100mm	1 metre	21.67	0.39	199.05	246.45	246.45	-19.23	-19.23
57	PVC 32mm dia	32mm	1 metre	20.50	0.17	159.57	141.84	134.75	12.50	18.42
58	PVC 20mm dia	20mm	1 metre	6.00	0.02	210.53	219.30	192.98	-4.00	9.09
59	PVC rain water down fall 110mm	110mm	1 metre	13.33	0.34	183.67	117.55	117.55	56.25	56.25
60	HDPE Cylindrical		No.	1.00	0.62	116.67	116.67	116.67	0.00	0.00
II.Labour cost										
1. Skilled Labour										
61	Mason I & II (Brick Layer I & II Class)		No.	155.39	9.92	193.10	193.10	179.31	0.00	7.69
62	Carpenter		No.	17.96	0.93	208.33	208.33	208.33	0.00	0.00
63	Painter		No.	25.07	1.24	208.70	208.70	180.87	0.00	15.38
64	Fitter I & II		No.	12.61	0.76	171.43	171.43	148.57	0.00	15.38
65	Plumber		No.	1.97	0.10	210.00	210.00	210.00	0.00	0.00
66	Electrician Gr I & II		No.	8.31	0.43	233.33	233.33	200.00	0.00	16.67
2.Unskilled Labour										
67	Mazdoor-men		No.	150.70	7.13	200.00	200.00	150.91	0.00	32.53
68	Mazdoor-Women		No.	216.44	6.24	208.96	208.96	185.07	0.00	12.90
70	Helper		No.	12.09	0.30	239.73	239.73	239.73	0.00	0.00
III.Other expenses										
71	Mixing Charges per mortar		cu.m	35.90	1.34	244.90	228.57	179.59	7.14	36.37
72	E.B.Connection charges		No.	1.00	0.89	134.89	133.53	127.32	1.02	5.94
73	Contingencies	2.5%			2.22	192.95	191.66	174.31	0.67	10.70
74	Supervision charges	10%			8.89	192.95	191.66	174.31	0.67	10.70
					100.00					

TABLE - 1
BUILDING CONSTRUCTION COST INDEX

CENTRE :PUDUKOTTAI

QUARTER : JUNE 2021
(BASE YEAR:2011-12=100)

Sl. No.	ITEM	Weight	INDEX			% Variation	
			Current Quarter June 2021	Previous Quarter March 2021	Corresponding Qtr. of prev. year June 2020	Previous Quarter June 2021	Corresponding Qtr. of prev. year June 2020
I	<u>MATERIAL COST</u>						
1	BRICKS & TILES	18.93	194.49	198.75	177.18	-2.14	9.77
2	SAND, STONE & OTHER QUARRY PRODUCTS	10.13	279.29	287.36	268.98	-2.81	3.83
3	CEMENT & LIME	14.36	149.55	139.85	139.85	6.94	6.94
4	TIMBER & OTHER WOODS	3.32	161.28	153.78	148.72	4.87	8.44
5	IRON & STEEL	6.69	145.27	140.72	123.29	3.23	17.83
6	ANCILLIARY MATERIALS	2.65	204.62	195.71	194.91	4.55	4.98
7	ELECTRICAL FITTINGS	1.80	168.22	152.41	131.77	10.38	27.66
8	SANITARY WARE & WATER SUPPLY	1.73	156.78	152.38	151.21	2.88	3.68
II	<u>LABOUR COST</u>						
1	SKILLED LABOUR	13.38	195.79	195.79	180.62	0.00	8.40
2	UNSKILLED LABOUR	13.67	204.97	204.97	168.47	0.00	21.66
III	<u>OTHER EXPENSES</u>						
1	MIXING CHARGES	1.34	244.90	228.57	179.59	7.14	36.37
2	E.B.SERVICE CONNECTION CHARGES	0.89	134.89	133.53	127.32	1.02	5.94
3	CONTINGENCIES	2.22	192.95	191.66	174.31	0.67	10.70
4	SUPERVISION CHARGES	8.89	192.95	191.66	174.31	0.67	10.70
I	<i>MATERIAL COST</i>	59.62	189.26	187.72	174.82	0.82	8.26
II	<i>LABOUR COST</i>	27.05	200.43	200.43	174.48	0.00	14.87
III	<i>OTHER EXPENSES</i>	13.33	194.30	191.50	171.72	1.46	13.15
	BUILDING CONSTRUCTION COST INDEX	100	192.95	191.66	174.31	0.67	10.70

BUILDING CONSTRUCTION COST INDEX - ITEM-WISE INDEX

Quarter : June 2021
(Base year:2011-12=100)

Centre :Madurai

Sl. No.	Item	Specification	Unit	Weight	INDEX			% Variation	
					Current Quarter June 2021	Previous Quarter March 2021	Corresponding Qtr. of prev. year June 2020	Previous Quarter March 2021	Corresponding Qtr. of prev. year June 2020
I. Material cost									
1.Bricks and Tiles Products									
1	Bricks	9"x4.5"x2	1000 Nos	18.85	173.68	157.89	142.11	10.00	22.22
2	Brick Jelly	20mm	cu.m	0.50	193.94	169.69	169.69	14.29	14.29
3	Pressed Tiles	9"x9"	1000 Nos	1.58	128.21	128.21	128.21	0.00	0.00
4	Glazes tiles	9"x9"	1 No.	0.12	217.69	217.69	204.08	0.00	6.67
5	Ceramic tiles	9"x9"	1 No.	1.72	158.73	133.33	126.98	19.05	25.00
2.Sand stone and other Quarry Products									
6	Sand for mortar	River	cu.m	3.65	427.58	413.81	413.81	3.33	3.33
7	Stone Jelly (HBSJ)	40mm	cu.m	2.57	180.33	177.05	177.05	1.85	1.85
8	Stone Jelly (HBSJ)	20mm	cu.m	0.37	117.65	113.73	113.73	3.45	3.45
9	Stone Jelly Chips (HBSJ)	10mm	cu.m	1.26	164.70	158.82	158.82	3.70	3.70
10	Rough stone		cu.m	0.42	113.04	125.22	121.74	-9.72	-7.14
11	Bond stone		cu.m	0.56	105.26	103.88	103.88	1.33	1.33
3.Cement and Lime									
12	Cement		M.T	12.25	148.39	141.94	129.03	4.55	15.00
13	Lime stone		cu.m	0.16	134.10	134.10	134.10	0.00	0.00
4.Timber and other wood									
14	TW Frame		sq.m	0.82	111.86	110.94	110.94	0.83	0.83
15	TW Panel door shutter		sq.m	0.80	124.59	118.63	118.63	5.02	5.02
16	Solid PVC door shutter		sq.m	0.43	188.24	164.71	164.71	14.29	14.29
5.Iron and Steel									
17	Mild Steel Rods	10mm	MT	1.39	135.28	120.49	99.35	12.28	36.17
18	Ribbed Tar Steel (RTS)	8mm	MT	2.24	136.67	121.95	100.93	12.07	35.42
19	Binding Wire		Kg	0.48	140.85	127.89	113.32	10.13	24.29
20	Door catch		No.	0.03	120.00	114.29	114.29	5.00	5.00
21	Hold fast		No.	0.03	533.33	533.33	500.00	0.00	6.67
22	Tower bolt receiver		No.	0.02	194.44	177.78	177.78	9.38	9.38
23	Steel window ventilator		Kg	1.32	179.69	179.69	156.25	0.00	15.00
6.Ancillary Materials									
25	Ready mix Prime paint		Ltr	0.11	123.33	118.57	118.57	4.02	4.02
26	Ready mix Synthetic Enamel paint		Ltr	0.05	154.55	150.00	150.00	3.03	3.03
27	Cement paint		Kg	1.64	146.34	121.95	121.95	20.00	20.00
28	Matt paint		Ltr	0.09	118.49	113.21	113.21	4.67	4.67
7.Electrical Fittings									
29	1.5sqmm copper cable		100 metre	0.73	146.03	133.33	130.16	9.52	12.20
30	PVC Pipe	20mm	1metre	0.14	195.12	173.44	173.44	12.50	12.50
31	PVC bend		No.	0.04	500.00	214.29	200.00	133.33	150.00
32	PVC tee		No.	0.02	300.00	1812.50	1687.50	-83.45	-82.22
33	5amps 5 pin at switch board	itself	No.	0.00	112.50	112.50	112.50	0.00	0.00
34	5amps 5 pin non interlocking switch		No.	0.01	138.46	179.49	164.10	-22.86	-15.63
35	Ceiling Rose		No.	0.02	147.37	131.58	131.58	12.00	12.00
36	Bakelite pattern Holder		No.	0.02	184.21	168.42	157.89	9.38	16.67
37	Bulk Head Fittings		No.	0.01	375.00	375.00	218.75	0.00	71.43
38	8 SWG GI wire		kg	0.04	148.84	158.14	153.49	-5.88	-3.03
39	32 amps 500V fuse unit		No.	0.01	133.33	192.59	177.78	-30.77	-25.00
40	Junction box		No.	0.04	340.00	340.00	340.00	0.00	0.00
41	Jointbox		No.	0.01	205.26	205.26	184.21	0.00	11.43
42	Hylem sheet		No.	0.02	121.31	121.31	118.03	0.00	2.78
43	Flush type switch		No.	0.04	133.33	133.33	133.33	0.00	0.00
44	11wCFL bulb	11w	No.	0.01	225.11	225.11	207.79	0.00	8.33
45	Calling bell		No.	0.01	250.00	250.00	208.33	0.00	20.00
46	25amps single phase ELCB		No.	0.15	142.86	142.86	142.86	0.00	0.00
47	25mm GI pipe line	25mm	1 metre	0.06	158.68	158.68	158.68	0.00	0.00
48	GI Pipe 20mm(Earth pit)	20mm	1 metre	0.01	239.80	260.20	209.18	-7.84	14.63
49	40mm dia GI pipe	40mm	1 metre	0.01	196.92	196.92	196.92	0.00	0.00
50	15mm GI Pipe	15mm	1 metre	0.01	192.98	192.98	192.98	0.00	0.00
51	GI reducers		No.	0.00	250.00	214.29	200.00	16.67	25.00
8.Sanitary & Water Supply									
52	Indian Water Closet		No.	0.14	168.80	163.68	163.68	3.13	3.13
53	S.W.Gully Trap	6"x4"	No.	0.03	152.38	152.38	152.38	0.00	0.00
54	S.W.Bend	4"	No.	0.01	277.78	277.78	277.78	0.00	0.00
55	GI Pipe 20mm dia Hotwater	20mm	1 metre	0.12	183.93	183.93	147.86	0.00	24.39
56	Stone ware pipe 100mm	100mm	1 metre	0.32	150.00	120.00	120.00	25.00	25.00
57	PVC 32mm dia	32mm	1 metre	0.14	139.28	142.85	135.70	-2.50	2.63
58	PVC 20mm dia	20mm	1 metre	0.02	214.32	178.60	157.17	20.00	36.36
59	PVC rain water down fall 110mm	110mm	1 metre	0.22	163.70	118.52	111.11	38.12	47.33
60	HDPE Cylindrical		No.	0.53	116.67	111.11	111.11	5.00	5.00
II.Labour cost									
1. Skilled Labour									
61	Mason I & II (Brick Layer I & II Class)		No.	10.97	170.67	160.00	149.33	6.67	14.29
62	Carpenter		No.	1.06	187.50	175.00	162.50	7.14	15.38
63	Painter		No.	1.45	190.48	177.78	165.08	7.14	15.38
64	Fitter I & II		No.	0.67	206.90	193.10	179.31	7.14	15.38
65	Plumber		No.	0.11	206.90	193.10	179.31	7.14	15.38
66	Electrician Gr I & II		No.	0.47	183.61	170.49	157.38	7.69	16.67
2.Unskilled Labour									
67	Mazdoor-men		No.	8.04	206.90	193.10	179.31	7.14	15.38
68	Mazdoor-Women		No.	7.76	184.62	184.62	164.10	0.00	12.50
70	Helper		No.	0.27	215.23	198.68	198.68	8.33	8.33
III.Other expenses									
71	Mixing Charges per mortar		cu.m	1.31	400.05	342.90	200.02	16.67	100.00
72	E.B.Connection charges		No.	0.40	227.64	225.74	194.67	0.84	16.94
73	Contingencies	2.5%		2.22	183.22	172.20	158.28	6.40	15.75
74	Supervision charges	10%		8.89	183.22	172.20	158.28	6.40	15.75
				100.00					30.98

TABLE - 1
BUILDING CONSTRUCTION COST INDEX

CENTRE : MADURAI

QUARTER : JUNE 2021
(BASE YEAR:2011-12=100)

Sl. No.	ITEM	Weight	INDEX			% Variation	
			Current Quarter June 2021	Previous Quarter March 2021	Corresponding Qtr. of prev. year June 2020	Previous Quarter June 2021	Corresponding Qtr. of prev. year June 2020
I	<u>MATERIAL COST</u>						
1	BRICKS & TILES	22.76	170.06	154.54	140.91	10.05	20.69
2	SAND, STONE & OTHER QUARRY PRODUCTS	8.83	269.76	262.60	262.44	2.73	2.79
3	CEMENT & LIME	12.41	148.20	141.83	129.10	4.49	14.79
4	TIMBER & OTHER WOODS	2.05	132.83	125.21	125.21	6.09	6.09
5	IRON & STEEL	5.50	148.98	138.04	117.08	7.93	27.25
6	ANCILLIARY MATERIALS	1.88	143.96	122.06	122.06	17.93	17.93
7	ELECTRICAL FITTINGS	1.42	173.72	182.36	175.42	-4.74	-0.97
8	SANITARY WARE & WATER SUPPLY	1.54	145.98	130.76	125.90	11.64	15.95
II	<u>LABOUR COST</u>						
1	SKILLED LABOUR	14.73	176.15	164.91	153.67	6.82	14.63
2	UNSKILLED LABOUR	16.07	196.27	189.10	172.29	3.80	13.92
III	<u>OTHER EXPENSES</u>						
1	MIXING CHARGES	1.31	400.05	342.90	200.02	16.67	100.00
2	E.B.SERVICE CONNECTION CHARGES	0.40	227.64	225.74	194.67	0.84	16.94
3	CONTINGENCIES	2.22	183.22	172.20	158.28	6.40	15.75
4	SUPERVISION CHARGES	8.89	183.22	172.20	158.28	6.40	15.75
I	<i>MATERIAL COST</i>	56.39	176.01	164.95	154.27	6.70	14.09
II	<i>LABOUR COST</i>	30.79	186.65	177.53	163.38	5.14	14.24
III	<i>OTHER EXPENSES</i>	12.82	206.69	191.26	163.68	8.07	26.28
	BUILDING CONSTRUCTION COST INDEX	100	183.22	172.20	158.28	6.40	15.75

BUILDING CONSTRUCTION COST INDEX - ITEM-WISE INDEX

Quarter : June 2021
(Base year:2011-12=100)

Centre : Virudhunagar

Sl. No.	Item	Specification	Unit	Weight	INDEX			% Variation	
					Current Quarter June 2021	Previous Quarter March 2021	Corresponding Qtr. of prev. year June 2020	Previous Quarter March 2021	Corresponding Qtr. of prev. year June 2020
I. Material cost									
1.Bricks and Tiles Products									
1	Bricks	9"x4.5"x2.25"	1000 Nos.	14.51	240.24	234.23	216.22	2.56	11.11
2	Brick Jelly	20mm	cu.m	0.41	241.31	241.21	220.70	0.04	9.34
3	Pressed Tiles	9"x9"	1000 Nos.	1.78	160.00	160.00	160.00	0.00	0.00
4	Glazes tiles	9"x9"	1 No.	0.14	408.16	326.53	299.32	25.00	36.36
5	Ceramic tiles	9"x9"	1 No.	2.02	126.98	133.33	126.98	-4.76	0.00
2.Sand stone and other Quarry Products									
6	Sand for mortar	River	cu.m	3.28	572.93	413.40	404.49	38.59	41.64
7	Stone Jelly (HBSJ)	40mm	cu.m	3.15	175.00	175.00	175.00	0.00	0.00
8	Stone Jelly (HBSJ)	20mm	cu.m	0.36	139.53	139.53	139.53	0.00	0.00
9	Stone Jelly Chips (HBSJ)	10mm	cu.m	1.30	153.33	146.67	146.67	4.55	4.55
10	Rough stone		cu.m	0.50	121.53	125.00	121.53	-2.78	0.00
11	Bond stone		cu.m	0.68	113.92	109.70	101.27	3.85	12.50
3.Cement and Lime									
12	Cement		M.T	14.23	149.59	143.09	139.84	4.55	6.98
13	Lime stone		cu.m	0.19	128.67	325.58	325.58	-60.48	-60.48
4.Timber and other wood									
14	TW Frame		sq.m	0.97	109.42	107.68	107.68	1.62	1.62
15	TW Panel door shutter		sq.m	0.79	208.49	200.77	193.05	3.85	8.00
16	Solid PVC door shutter		sq.m	0.51	171.30	162.04	152.78	5.71	12.12
5.Iron and Steel									
17	Mild Steel Rods	10mm	MT	1.54	138.55	127.37	120.67	8.77	14.81
18	Ribbed Tar Steel (RTS)	8mm	MT	2.36	142.27	130.61	128.28	8.93	10.91
19	Binding Wire		Kg	0.49	184.33	165.90	165.90	11.11	11.11
20	Door catch		No.	0.03	137.50	125.00	125.00	10.00	10.00
21	Hold fast		No.	0.03	533.33	533.33	500.00	0.00	6.67
22	Tower bolt receiver		No.	0.02	246.15	320.00	307.69	-23.08	-20.00
23	Steel window ventilator		Kg	1.39	173.91	173.91	166.96	0.00	4.17
6.Ancillary Materials									
25	Ready mix Prime paint		Ltr	0.12	125.00	120.00	120.00	4.17	4.17
26	Enamel paint		Ltr	0.06	163.64	145.45	145.45	12.50	12.50
27	Cement paint		Kg	2.15	126.09	119.57	119.57	5.45	5.45
28	Matt paint		Ltr	0.11	136.05	129.25	129.25	5.26	5.26
7.Electrical Fittings									
29	1.5sqmm copper cable		100 meter	0.72	108.68	108.68	108.68	0.00	0.00
30	PVC Pipe	20mm	1metre	0.16	193.30	173.33	166.67	11.52	15.98
31	PVC bend		No.	0.05	428.57	214.29	200.00	100.00	114.29
32	PVC tee		No.	0.03	250.00	250.00	250.00	0.00	0.00
33	Samps 5 pin at switch board itself		No.	0.00	185.19	185.19	185.19	0.00	0.00
34	Samps 5 pin non interlocking switch		No.	0.01	116.67	145.83	133.33	-20.00	-12.50
35	Ceiling Rose		No.	0.02	178.57	178.57	178.57	0.00	0.00
36	Bakelite pattern Holder		No.	0.02	214.29	200.00	200.00	7.14	7.14
37	Bulk Head Fittings		No.	0.01	230.77	230.77	215.38	0.00	7.14
38	8 SWG GI wire		kg	0.05	151.11	177.78	146.67	-15.00	3.03
39	32 amps 500V fuse unit		No.	0.01	117.65	152.94	141.18	-23.08	-16.67
40	Junction box		No.	0.03	150.00	150.00	150.00	0.00	0.00
41	Jointbox		No.	0.01	177.42	177.42	177.42	0.00	0.00
42	Hylem sheet		No.	0.02	121.31	121.31	118.03	0.00	2.78
43	Flush type switch		No.	0.05	110.25	110.25	110.25	0.00	0.00
44	11wCFL bulb	11w	No.	0.01	162.50	162.50	150.00	0.00	8.33
45	Calling bell		No.	0.01	266.67	266.67	222.22	0.00	20.00
46	25amps single phase ELCB		No.	0.11	196.08	196.08	196.08	0.00	0.00
47	25mm GI pipe line	25mm	1 metre	0.06	199.13	190.48	190.48	4.55	4.55
48	GI Pipe 20mm(Earth pit)	20mm	1 metre	0.02	167.44	139.53	139.53	20.00	20.00
49	40mm dia GI pipe	40mm	1 metre	0.01	231.29	231.29	231.29	0.00	0.00
50	15mm GI Pipe	15mm	1 metre	0.01	253.97	253.97	253.97	0.00	0.00
51	GI reducers		No.	0.00	173.08	115.38	107.69	50.00	60.71
8.Sanitary & Water Supply									
52	Indian Water Closet		No.	0.10	242.95	234.27	234.27	3.70	3.70
53	S.W.Gully Trap	6"x4"	No.	0.03	145.45	145.45	145.45	0.00	0.00
54	S.W.Bend	4"	No.	0.01	190.48	190.48	190.48	0.00	0.00
55	GI Pipe 20mm dia Hotwater	20mm	1 metre	0.14	150.46	135.78	121.10	10.81	24.24
56	Stone ware pipe 100mm	100mm	1 metre	0.26	214.29	214.29	214.29	0.00	0.00
57	PVC 32mm dia	32mm	1 metre	0.17	138.30	141.84	134.75	-2.50	2.63
58	PVC 20mm dia	20mm	1 metre	0.02	297.30	225.23	198.20	32.00	50.00
59	PVC rain water down fall		1 metre	0.34	102.04	117.55	117.55	-13.19	-13.19
60	HDPE Cylindrical		No.	0.62	143.06	141.67	141.67	0.98	0.98
II.Labour cost									
1. Skilled Labour									
61	Mason I & II (Brick Layer I & II Class)		No.	10.52	182.41	182.41	182.41	0.00	0.00
62	Carpenter		No.	1.07	202.90	202.90	202.90	0.00	0.00
63	Painter		No.	1.49	202.90	202.90	173.91	0.00	16.67
64	Fitter I & II		No.	0.68	222.22	206.35	190.48	7.69	16.67
65	Plumber		No.	0.11	206.35	206.35	190.48	0.00	8.33
66	Electrician Gr I & II		No.	0.55	157.38	157.38	157.38	0.00	0.00
2.Unskilled Labour									
67	Mazdoor-men		No.	7.59	188.03	188.03	188.03	0.00	0.00
68	Mazdoor-Women		No.	8.58	173.91	173.91	173.91	0.00	0.00
70	Helper		No.	0.31	231.79	231.79	231.79	0.00	0.00
III.Other expenses									
71	Mixing Charges per mortar		cu.m	1.31	165.20	165.20	165.20	0.00	0.00
72	E.B.Connection charges		No.	0.45	171.99	167.73	156.81	2.54	9.68
73	Contingencies	2.5%		2.22	193.40	184.62	179.27	4.75	7.88
74	Supervision charges	10%		8.89	193.40	184.62	179.27	4.75	7.88
				100.00					-6.32

TABLE - 1
BUILDING CONSTRUCTION COST INDEX

CENTRE : VIRUDHUNAGAR

QUARTER : JUNE 2021
(BASE YEAR:2011-12=100)

Sl. No.	ITEM	Weight	INDEX			% Variation	
			Current Quarter June 2021	Previous Quarter March 2021	Corresponding Qtr. of prev. year June 2020	Previous Quarter June 2021	Corresponding Qtr. of prev. year June 2020
I	<u>MATERIAL COST</u>						
1	BRICKS & TILES	18.85	221.78	217.25	202.06	2.09	9.76
2	SAND, STONE & OTHER QUARRY PRODUCTS	9.27	303.93	246.46	242.51	23.32	25.33
3	CEMENT & LIME	14.42	149.32	145.52	142.31	2.61	4.92
4	TIMBER & OTHER WOODS	2.27	157.96	152.43	147.65	3.63	6.98
5	IRON & STEEL	5.86	154.65	145.61	141.05	6.21	9.64
6	ANCILLIARY MATERIALS	2.44	127.35	120.62	120.62	5.58	5.58
7	ELECTRICAL FITTINGS	1.43	153.22	144.10	140.99	6.33	8.68
8	SANITARY WARE & WATER SUPPLY	1.69	154.10	154.49	152.26	-0.25	1.21
II	<u>LABOUR COST</u>						
1	SKILLED LABOUR	14.42	187.17	186.41	182.54	0.40	2.53
2	UNSKILLED LABOUR	16.49	181.52	181.52	181.52	0.00	0.00
III	<u>OTHER EXPENSES</u>						
1	MIXING CHARGES	1.31	165.20	165.20	165.20	0.00	0.00
2	E.B.SERVICE CONNECTION CHARGES	0.45	171.99	167.73	156.81	2.54	9.68
3	CONTINGENCIES	2.22	193.40	184.62	179.27	4.75	7.88
4	SUPERVISION CHARGES	8.89	193.40	184.62	179.27	4.75	7.88
I	<i>MATERIAL COST</i>	56.23	199.30	185.65	178.27	7.35	11.80
II	<i>LABOUR COST</i>	30.90	184.15	183.80	182.00	0.19	1.18
III	<i>OTHER EXPENSES</i>	12.87	189.78	182.05	177.05	4.24	7.19
	BUILDING CONSTRUCTION COST INDEX	100	193.40	184.62	179.27	4.75	7.88

BUILDING CONSTRUCTION COST INDEX - ITEM-WISE INDEX

Quarter : June 2021
(Base year:2011-12=100)

Centre : Palayamkottai

Sl. No.	Item	Specification	Unit	Weight	INDEX			% Variation	
					Current Quarter June 2021	Previous Quarter March 2021	Corresponding Qtr. of prev. year June 2020	Previous Quarter March 2021	Corresponding Qtr. of prev. year June 2020
I. Material cost									
1. Bricks and Tiles Products									
1	Bricks	9"x4.5"x2	1000 Nos	18.48	128.70	123.48	120.00	4.23	7.25
2	Brick Jelly	20mm	cu.m	0.52	109.07	104.82	103.40	4.05	5.48
3	Pressed Tiles	9"x9"	1000 Nos	1.57	133.33	130.56	127.78	2.13	4.35
4	Glazes tiles	9"x9"	1 No.	0.17	250.00	240.00	220.00	4.17	13.64
5	Ceramic tiles	9"x9"	1 No.	0.59	230.00	240.00	220.00	-4.17	4.55
2. Sand stone and other Quarry Products									
6	Sand for mortar	River	cu.m	3.02	585.99	592.36	592.36	-1.08	-1.08
7	Stone Jelly (HBSJ)	40mm	cu.m	2.91	127.43	127.43	125.66	0.00	1.41
8	Stone Jelly (HBSJ)	20mm	cu.m	0.33	102.77	102.77	101.43	0.00	1.32
9	Stone Jelly Chips (HBSJ)	10mm	cu.m	1.37	114.10	114.10	112.44	0.00	1.47
10	Rough stone		cu.m	0.46	191.30	125.22	121.74	52.78	57.14
11	Bond stone		cu.m	0.63	167.62	165.08	152.38	1.54	10.00
3. Cement and Lime									
12	Cement		M.T	13.13	143.09	139.84	133.33	2.33	7.32
13	Lime stone		cu.m	0.14	115.00	112.50	112.50	2.22	2.22
4. Timber and other wood									
14	TW Frame		sq.m	0.92	133.88	180.03	176.76	-25.64	-24.26
15	TW Panel door shutter		sq.m	0.97	128.03	122.20	122.20	4.78	4.78
16	Solid PVC door shutter		sq.m	0.65	106.07	106.07	104.26	0.00	1.74
5. Iron and Steel									
17	Mild Steel Rods	10mm	MT	1.53	117.28	112.09	107.94	4.63	8.65
18	Ribbed Tar Steel (RTS)	8mm	MT	2.47	118.56	113.40	109.28	4.55	8.49
19	Binding Wire		Kg	0.57	117.22	117.22	117.22	0.00	0.00
20	Door catch		No.	0.03	260.00	220.00	200.00	18.18	30.00
21	Hold fast		No.	0.12	115.38	123.08	115.38	-6.25	0.00
22	Tower bolt receiver		No.	0.04	123.81	130.95	130.95	-5.45	-5.45
23	Steel window ventilator		Kg	1.31	169.49	169.49	162.71	0.00	4.17
6. Ancillary Materials									
25	Ready mix Prime paint		Ltr	0.11	131.71	136.59	136.59	-3.57	-3.57
26	Ready mix Synthetic Enamel paint		Ltr	0.06	154.17	154.17	154.17	0.00	0.00
27	Cement paint		Kg	1.94	128.89	122.22	122.22	5.45	5.46
28	Matt paint		Ltr	0.10	108.97	108.97	108.97	0.00	0.00
7. Electrical Fittings									
29	1.5sqmm copper cable		100 metre	0.70	148.39	145.16	145.16	2.22	2.22
30	PVC Pipe	20mm	1metre	0.15	270.00	260.00	255.00	3.85	5.88
31	PVC bend		No.	0.05	189.70	189.70	189.70	0.00	0.00
32	PVC tee		No.	0.03	179.00	179.00	179.00	0.00	0.00
33	5amps 5 pin at switch board	itself	No.	0.01	123.33	123.33	123.33	0.00	0.00
34	5amps 5 pin non interlocking switch		No.	0.02	120.00	120.00	120.00	0.00	0.00
35	Ceiling Rose		No.	0.02	150.00	145.83	145.83	2.86	2.86
36	Bakelite pattern Holder		No.	0.02	200.00	187.50	181.25	6.67	10.34
37	Bulk Head Fittings		No.	0.01	189.33	186.67	186.67	1.43	1.43
38	8 SWG GI wire		kg	0.04	147.06	147.06	143.14	0.00	2.74
39	32 amps 500V fuse unit		No.	0.01	120.55	142.47	131.51	-15.38	-8.33
40	Junction box		No.	0.04	246.67	240.00	240.00	2.78	2.78
41	Jointbox		No.	0.01	117.39	117.39	117.39	0.00	0.00
42	Hylem sheet		No.	0.02	119.50	122.82	119.50	-2.70	0.00
43	Flush type switch		No.	0.05	116.21	116.21	110.09	0.00	5.56
44	11w CFL bulb	11w	No.	0.01	182.50	162.50	150.00	12.31	21.67
45	Callina bell		No.	0.01	131.74	287.43	239.52	-54.17	-45.00
46	25amps single phase ELCB		No.	0.26	136.43	136.43	136.43	0.00	0.00
47	25mm GI pipe line	25mm	1 metre	0.06	133.33	133.33	133.33	0.00	0.00
48	GI Pipe 20mm(Earth pit)	20mm	1 metre	0.02	130.00	130.00	130.00	0.00	0.00
49	40mm dia GI pipe	40mm	1 metre	0.01	123.33	123.33	123.33	0.00	0.00
50	15mm GI Pipe	15mm	1 metre	0.01	192.31	192.31	192.31	0.00	0.00
51	GI reducers		No.	0.00	150.00	150.00	150.00	0.00	0.00
8. Sanitary & Water Supply									
52	Indian Water Closet		No.	0.14	144.44	141.67	141.67	1.96	1.96
53	S.W.Gully Trap	6"x4"	No.	0.03	139.39	133.33	133.33	4.55	4.55
54	S.W.Bend	4"	No.	0.01	150.00	150.00	150.00	0.00	0.00
55	GI Pipe 20mm dia Hotwater	20mm	1 metre	0.12	126.98	123.02	123.02	3.23	3.23
56	Stone ware pipe 100mm	100mm	1 metre	0.26	266.67	200.00	200.00	33.33	33.33
57	PVC 32mm dia	32mm	1 metre	0.15	118.28	143.37	136.20	-17.50	-13.16
58	PVC 20mm dia	20mm	1 metre	0.02	245.33	222.22	195.56	10.40	25.45
59	PVC rain water down fall 110mm	110mm	1 metre	0.31	138.98	117.15	117.15	18.63	18.63
60	HDPE Cylindrical		No.	0.57	144.44	144.44	144.44	0.00	0.00
II. Labour cost									
1. Skilled Labour									
61	Mason I & II (Brick Layer I & II Class)		No.	10.27	196.92	190.77	190.77	3.23	3.23
62	Carpenter		No.	1.11	187.10	180.65	180.65	3.57	3.57
63	Painter		No.	1.34	207.41	200.00	192.59	3.70	7.69
64	Fitter I & II		No.	0.68	214.81	207.41	207.41	3.57	3.57
65	Plumber		No.	0.11	227.59	220.69	220.69	3.13	3.13
66	Electrician Gr I & II		No.	0.45	222.22	214.81	214.81	3.45	3.45
2. Unskilled Labour									
67	Mazdoor-men		No.	7.18	191.67	183.33	183.33	4.55	4.55
68	Mazdoor-Women		No.	8.38	174.36	164.10	164.10	6.25	6.25
70	Helper		No.	0.29	298.01	271.52	251.66	9.76	18.42
III. Other expenses									
71	Mixing Charges per mortar		cu.m	1.21	117.65	112.94	112.94	4.17	4.17
72	E.B.Connection charges		No.	0.54	130.57	130.57	130.57	0.00	0.00
73	Contingencies	2.5%		2.22	169.41	164.64	161.67	2.90	4.79
74	Supervision charges	10%		8.89	169.41	164.64	161.67	2.90	4.79
				100.00					16.60

TABLE - 1
BUILDING CONSTRUCTION COST INDEX

CENTRE : PALAYAMKOTTAI

QUARTER : JUNE 2021
(BASE YEAR:2011-12=100)

Sl. No.	ITEM	Weight	INDEX			% Variation	
			Current Quarter June 2021	Previous Quarter March 2021	Corresponding Qtr. of prev. year June 2020	Previous Quarter June 2021	Corresponding Qtr. of prev. year June 2020
I	<u>MATERIAL COST</u>						
1	BRICKS & TILES	21.34	132.34	127.71	123.75	3.63	6.95
2	SAND, STONE & OTHER QUARRY PRODUCTS	8.72	289.65	288.21	286.21	0.50	1.20
3	CEMENT & LIME	13.27	142.79	139.55	133.11	2.32	7.27
4	TIMBER & OTHER WOODS	2.54	124.52	139.03	137.38	-10.43	-9.36
5	IRON & STEEL	6.08	129.82	126.42	121.97	2.69	6.44
6	ANCILLIARY MATERIALS	2.21	128.75	123.15	123.15	4.55	4.55
7	ELECTRICAL FITTINGS	1.55	160.42	158.36	157.03	1.30	2.16
8	SANITARY WARE & WATER SUPPLY	1.62	160.26	146.84	145.87	9.14	9.86
II	<u>LABOUR COST</u>						
1	SKILLED LABOUR	13.96	199.08	192.67	191.96	3.32	3.71
2	UNSKILLED LABOUR	15.86	184.46	174.78	174.42	5.54	5.76
III	<u>OTHER EXPENSES</u>						
1	MIXING CHARGES	1.21	117.65	112.94	112.94	4.17	4.17
2	E.B.SERVICE CONNECTION CHARGES	0.54	130.57	130.57	130.57	0.00	0.00
3	CONTINGENCIES	2.22	169.41	164.64	161.98	2.90	4.59
4	SUPERVISION CHARGES	8.89	169.41	164.64	161.98	2.90	4.59
I	<i>MATERIAL COST</i>	57.32	159.48	156.42	152.54	1.96	4.55
II	<i>LABOUR COST</i>	29.82	191.30	183.16	182.63	4.45	4.75
III	<i>OTHER EXPENSES</i>	12.86	162.91	158.35	156.03	2.88	4.41
	BUILDING CONSTRUCTION COST INDEX	100	169.41	164.64	161.96	2.90	4.60

BUILDING CONSTRUCTION COST INDEX - ITEM-WISE INDEX

Quarter : June 2021
(Base year:2011-12=100)

Centre :Nagercoil

Sl. No.	Item	Specification	Unit	Weight	INDEX			% Variation	
					Current Quarter June 2021	Previous Quarter March 2021	Corresponding Qtr. of prev. year June 2020	Previous Quarter March 2021	Corresponding Qtr. of prev. year June 2020
I. Material cost									
1.Bricks and Tiles Products									
1	Bricks	9"x4.5"x2.25"	1000 Nos	15.35	130.23	120.93	120.93	7.69	7.69
2	Brick Jelly	20mm	cu.m	0.40	181.23	158.58	141.59	14.29	28.00
3	Pressed Tiles	9"x9"	1000 Nos	0.93	150.00	145.83	145.83	2.86	2.86
4	Glazes tiles	9"x9"	1 No.	0.15	160.00	160.00	150.00	0.00	6.67
5	Ceramic tiles	9"x9"	1 No.	0.67	250.98	250.98	235.29	0.00	6.67
2.Sand stone and other Quarry Products									
6	Sand for mortar	River	cu.m	2.69	611.46	592.36	592.36	3.23	3.23
7	Stone Jelly (HBSJ)	40mm	cu.m	3.03	211.48	211.48	211.48	0.00	0.00
8	Stone Jelly (HBSJ)	20mm	cu.m	0.31	176.21	176.21	176.21	0.00	0.00
9	Stone Jelly Chips (HBSJ)	10mm	cu.m	1.34	211.48	211.48	211.48	0.00	0.00
10	Rough stone		cu.m	0.41	153.85	151.57	151.57	1.50	1.50
11	Bond stone		cu.m	0.56	150.00	140.00	140.00	7.14	7.14
3.Cement and Lime									
12	Cement		M.T	11.57	147.54	140.98	134.43	4.65	9.76
13	Lime stone		cu.m	0.16	139.82	134.75	134.75	3.77	3.77
4.Timber and other wood									
14	TW Frame		sq.m	0.88	335.42	313.95	301.88	6.84	11.11
15	TW Panel door shutter		sq.m	1.50	111.52	106.21	106.21	5.00	5.00
16	Solid PVC door shutter		sq.m	0.56	145.58	145.58	145.58	0.00	0.00
5.Iron and Steel									
17	Mild Steel Rods	10mm	MT	1.35	129.44	125.26	125.26	3.33	3.33
18	Ribbed Tar Steel (RTS)	8mm	MT	2.20	135.80	127.37	119.34	6.62	13.79
19	Binding Wire		Kg	0.48	140.08	126.85	116.73	10.43	20.00
20	Door catch		No.	0.03	300.00	250.00	250.00	20.00	20.00
21	Hold fast		No.	0.10	116.67	116.67	100.00	0.00	16.67
22	Tower bolt receiver		No.	0.05	277.78	259.26	259.26	7.14	7.14
23	Steel window ventilator		Kg	1.27	179.69	179.69	164.06	0.00	9.52
6.Ancillary Materials									
25	Ready mix Prime paint		Ltr	0.11	119.27	119.27	119.27	0.00	0.00
26	Ready mix Synthetic Enamel paint		Ltr	0.05	163.64	163.64	163.64	0.00	0.00
27	Cement paint		Kg	1.92	120.00	116.00	116.00	3.45	3.45
28	Matt paint		Ltr	0.09	113.33	106.67	106.67	6.25	6.25
7.Electrical Fittings									
29	1.5sqmm copper cable		100 mete	0.40	257.24	197.04	184.73	30.55	39.25
30	PVC Pipe	20mm	1metre	0.13	500.00	500.00	500.00	0.00	0.00
31	PVC bend		No.	0.04	200.00	200.00	200.00	0.00	0.00
32	PVC tee		No.	0.02	200.00	187.50	187.50	6.67	6.67
33	5amps 5 pin at switch board	itself	No.	0.00	142.86	142.86	142.86	0.00	0.00
34	5amps 5 pin non interlocking switch		No.	0.01	150.00	150.00	150.00	0.00	0.00
35	Ceiling Rose		No.	0.02	142.86	128.57	128.57	11.11	11.11
36	Bakelite pattern Holder		No.	0.02	135.00	135.00	135.00	0.00	0.00
37	Bulk Head Fittings		No.	0.01	220.00	220.00	220.00	0.00	0.00
38	8 SWG GI wire		kg	0.03	194.81	162.34	155.84	20.00	25.00
39	32 amps 500V fuse unit		No.	0.01	144.44	144.44	144.44	0.00	0.00
40	Junction box		No.	0.02	150.00	150.00	150.00	0.00	0.00
41	Jointbox		No.	0.01	267.86	267.86	267.86	0.00	0.00
42	Hylem sheet		No.	0.02	180.86	180.86	180.86	0.00	0.00
43	Flush type switch		No.	0.03	133.33	133.33	133.33	0.00	0.00
44	11wCFL bulb	11w	No.	0.01	200.00	166.67	166.67	20.00	20.00
45	Calling bell		No.	0.01	208.00	176.00	176.00	18.18	18.18
46	25amps single phase ELCB		No.	0.15	147.62	147.62	147.62	0.00	0.00
47	25mm GI pipe line	25mm	1 metre	0.04	222.45	222.45	222.45	0.00	0.00
48	GI Pipe 20mm(Earth pit)	20mm	1 metre	0.01	119.32	119.32	119.32	0.00	0.00
49	40mm dia GI pipe	40mm	1 metre	0.01	179.23	179.23	179.23	0.00	0.00
50	15mm GI Pipe	15mm	1 metre	0.01	298.08	298.08	298.08	0.00	0.00
51	GI reducers		No.	0.00	120.00	120.00	120.00	0.00	0.00
8.Sanitary & Water Supply									
52	Indian Water Closet		No.	0.08	157.21	157.21	148.47	0.00	5.88
53	S.W.Gully Trap	6"x4"	No.	0.01	288.89	244.44	244.44	18.18	18.18
54	S.W.Bend	4"	No.	0.01	233.77	166.23	166.23	40.63	40.63
55	GI Pipe 20mm dia Hotwater	20mm	1 metre	0.09	169.46	133.00	123.15	27.41	37.60
56	Stone ware pipe 100mm	100mm	1 metre	0.20	323.08	282.05	282.05	14.55	14.55
57	PVC 32mm dia	32mm	1 metre	0.13	257.78	257.78	257.78	0.00	0.00
58	PVC 20mm dia	20mm	1 metre	0.02	416.26	416.26	416.26	0.00	0.00
59	PVC rain water down fall 110mm	110mm	1 metre	0.20	236.23	236.23	205.99	0.00	14.68
60	HDPE Cylindrical		No.	0.51	230.56	225.00	225.00	2.47	2.47
II.Labour cost									
1. Skilled Labour									
61	Mason I & II (Brick Layer I & II Class)		No.	10.11	200.00	188.89	177.78	5.88	12.50
62	Carpenter		No.	1.14	200.00	177.78	166.67	12.50	20.00
63	Painter		No.	1.59	188.89	177.78	166.67	6.25	13.33
64	Fitter I & II		No.	0.82	194.59	172.97	172.97	12.50	12.50
65	Plumber		No.	0.13	194.59	172.97	172.97	12.50	12.50
66	Electrician Gr I & II		No.	0.53	200.00	188.89	177.78	5.88	12.50
2.Unskilled Labour									
67	Mazdoor-men		No.	8.51	187.50	175.00	162.50	7.14	15.38
68	Mazdoor-Women		No.	12.23	175.00	175.00	162.50	0.00	7.69
70	Helper		No.	0.55	230.77	215.38	200.00	7.14	15.38
III.Other expenses									
71	Mixing Charges per mortar		cu.m	2.03	225.00	200.00	200.00	12.50	12.50
72	E.B.Connection charges		No.	0.82	153.94	149.22	135.18	3.16	13.88
73	Contingencies	2.5%		2.22	183.98	175.52	168.88	4.82	8.94
74	Supervision charges	10%		8.89	183.98	175.52	168.88	4.82	8.94
				100.00					13.97

TABLE - 1
BUILDING CONSTRUCTION COST INDEX

CENTRE : NAGARCOIL

QUARTER : JUNE 2021
(BASE YEAR:2011-12=100)

Sl. No.	ITEM	Weight	INDEX			% Variation	
			Current Quarter June 2021	Previous Quarter March 2021	Corresponding Qtr. of prev. year June 2020	Previous Quarter June 2021	Corresponding Qtr. of prev. year June 2020
I	<u>MATERIAL COST</u>						
1	BRICKS & TILES	17.54	137.34	128.44	127.36	6.93	7.83
2	SAND, STONE & OTHER QUARRY PRODUCTS	8.33	331.99	325.04	325.04	2.14	2.14
3	CEMENT & LIME	11.72	147.44	140.90	134.43	4.64	9.68
4	TIMBER & OTHER WOODS	2.94	184.93	175.80	172.19	5.20	7.40
5	IRON & STEEL	5.46	146.44	140.45	132.42	4.26	10.59
6	ANCILLIARY MATERIALS	2.16	120.59	116.76	116.76	3.28	3.28
7	ELECTRICAL FITTINGS	1.02	247.72	221.91	216.85	11.63	14.23
8	SANITARY WARE & WATER SUPPLY	1.25	243.30	230.79	224.71	5.42	8.27
II	<u>LABOUR COST</u>						
1	SKILLED LABOUR	14.32	198.41	185.71	175.34	6.84	13.16
2	UNSKILLED LABOUR	21.28	181.45	176.05	163.48	3.07	10.99
III	<u>OTHER EXPENSES</u>						
1	MIXING CHARGES	2.03	225.00	200.00	200.00	12.50	12.50
2	E.B.SERVICE CONNECTION CHARGES	0.82	153.94	149.22	135.18	3.16	13.88
3	CONTINGENCIES	2.22	183.98	175.52	168.88	4.82	8.94
4	SUPERVISION CHARGES	8.89	183.98	175.52	168.88	4.82	8.94
I	<i>MATERIAL COST</i>	50.44	179.79	171.85	168.63	4.62	6.62
II	<i>LABOUR COST</i>	35.60	188.27	179.94	168.25	4.63	11.90
III	<i>OTHER EXPENSES</i>	13.96	188.17	177.53	171.42	5.99	9.77
	BUILDING CONSTRUCTION COST INDEX	100	183.98	175.52	168.88	4.82	8.94

BUILDING CONSTRUCTION COST INDEX - ITEM-WISE INDEX

Quarter : June 2021
(Base year:2011-12=100)

Centre : Udhagamandalam

Sl. No.	Item	Specification	Unit	Weight	INDEX			% Variation	
					Current Quarter June 2021	Previous Quarter March 2021	Corresponding Qtr. of prev. year June 2020	Previous Quarter March 2021	Corresponding Qtr. of prev. year June 2020
I. Material cost									
1.Bricks and Tiles Products									
1	Bricks	9"x4.5"x2.25"	1000 Nos.	21.50	150.00	125.00	118.75	20.00	26.32
2	Brick Jelly	20mm	cu.m	0.00	0.00	0.00	0.00	0.00	0.00
3	Pressed Tiles	9"x9"	1000 Nos.	1.53	190.48	171.43	161.90	11.11	17.65
4	Glazes tiles	9"x9"	1 No.	0.12	535.71	285.71	261.90	87.50	104.55
5	Ceramic tiles	9"x9"	1 No.	0.79	312.50	262.50	250.00	19.05	25.00
2.Sand stone and other Quarry Products									
6	Sand for mortar	River	cu.m	2.83	321.02	288.98	275.59	11.09	16.48
7	Stone Jelly (HBSJ)	40mm	cu.m	3.68	214.99	206.73	164.34	3.99	30.82
8	Stone Jelly (HBSJ)	20mm	cu.m	0.38	179.56	180.74	179.59	-0.65	-0.02
9	Stone Jelly Chips (HBSJ)	10mm	cu.m	1.97	186.87	186.87	179.88	0.00	3.88
10	Rough stone		cu.m	0.00	0.00	0.00	0.00	0.00	0.00
11	Bond stone		cu.m	0.00	0.00	0.00	0.00	0.00	0.00
3.Cement and Lime									
12	Cement		M.T	11.47	143.19	133.85	133.85	6.98	6.98
13	Lime stone		cu.m	0.30	151.62	151.62	151.62	0.00	0.00
4.Timber and other wood									
14	TW Frame		sq.m	1.59	142.86	128.57	128.57	11.11	11.11
15	TW Panel door shutter		sq.m	0.96	162.92	162.92	104.92	0.00	55.28
16	Solid PVC door shutter		sq.m	0.39	125.46	121.14	121.14	3.57	3.57
5.Iron and Steel									
17	Mild Steel Rods	10mm	MT	1.25	149.09	123.54	106.50	20.69	40.00
18	Ribbed Tar Steel (RTS)	8mm	MT	1.98	150.70	127.02	111.95	18.64	34.62
19	Binding Wire		Kg	0.48	145.45	145.45	116.36	0.00	25.00
20	Door catch		No.	0.02	200.00	178.57	178.57	12.00	12.00
21	Hold fast		No.	0.05	250.00	250.00	234.38	0.00	6.67
22	Tower bolt receiver		No.	0.05	150.00	120.00	116.67	25.00	28.57
23	Steel window ventilator		Kg	1.25	194.03	194.03	179.10	0.00	8.33
6.Ancillary Materials									
25	Ready mix Prime paint		Ltr	0.10	184.33	133.64	133.64	37.93	37.93
26	Ready mix Synthetic Enamel paint		Ltr	0.05	161.29	217.74	217.74	-25.93	-25.93
27	Cement paint		Kg	1.73	156.25	145.83	145.83	7.14	7.14
28	Matt paint		Ltr	0.16	120.88	117.22	109.89	3.12	10.00
7.Electrical Fittings									
29	1.5sqmm copper cable		100 meter	0.69	134.02	151.52	133.33	-11.55	0.51
30	PVC Pipe	20mm	1metre	0.07	364.30	348.51	348.51	4.53	4.53
31	PVC bend		No.	0.03	200.00	194.44	194.44	2.86	2.86
32	PVC tee		No.	0.02	225.00	233.33	233.33	-3.57	-3.57
33	5amps 5 pin at switch board itself		No.	0.01	150.00	133.33	133.33	12.50	12.50
34	5amps 5 pin non interlocking switch		No.	0.01	200.00	175.00	160.00	14.29	25.00
35	Ceiling Rose		No.	0.03	116.67	116.67	116.67	0.00	0.00
36	Bakelite pattern Holder		No.	0.03	240.00	200.00	176.00	20.00	36.36
37	Bulk Head Fittings		No.	0.01	350.45	181.27	229.61	93.33	52.63
38	8 SWG GI wire		kg	0.05	120.75	147.17	147.17	-17.95	-18.37
39	32 amps 500V fuse unit		No.	0.01	194.12	152.94	141.18	26.92	37.50
40	Junction box		No.	0.09	120.00	120.00	120.00	0.00	0.00
41	Jointbox		No.	0.02	275.00	200.00	200.00	37.50	37.50
42	Hylem sheet		No.	0.02	118.03	121.31	118.03	-2.70	0.00
43	Flush type switch		No.	0.04	162.13	123.22	116.73	31.58	38.89
44	11wCFL bulb	11w	No.	0.01	216.67	216.67	200.00	0.00	8.33
45	Calling bell		No.	0.01	333.33	266.67	222.22	25.00	50.00
46	25amps single phase ELCB		No.	0.08	152.00	152.00	152.00	0.00	0.00
47	25mm GI pipe line	25mm	1 metre	0.05	253.04	180.87	180.87	39.90	39.90
48	GI Pipe 20mm(Earth pit)	20mm	1 metre	0.01	188.24	148.42	177.98	26.83	5.76
49	40mm dia GI pipe	40mm	1 metre	0.01	215.23	198.68	198.68	8.33	8.33
50	15mm GI Pipe	15mm	1 metre	0.01	400.00	400.00	400.00	0.00	0.00
51	GI reducers		No.	0.00	175.68	175.68	175.68	0.00	0.00
8.Sanitary & Water Supply									
52	Indian Water Closet		No.	0.07	145.45	145.45	136.36	0.00	6.67
53	S.W.Gully Trap	6"x4"	No.	0.02	260.00	200.00	200.00	30.00	30.00
54	S.W.Bend	4"	No.	0.01	142.86	142.86	119.05	0.00	20.00
55	GI Pipe 20mm dia Hotwater	20mm	1 metre	0.09	233.78	213.57	213.57	9.46	9.46
56	Stone ware pipe 100mm	100mm	1 metre	0.30	198.41	133.33	114.29	48.81	73.61
57	PVC 32mm dia	32mm	1 metre	0.13	195.04	141.84	134.75	37.51	44.74
58	PVC 20mm dia	20mm	1 metre	0.01	405.41	225.23	198.20	80.00	104.55
59	PVC rain water down fall	110mm	1 metre	0.26	146.94	117.55	85.03	25.00	72.80
60	HDPE Cylindrical		No.	0.48	250.00	230.56	230.56	8.43	8.43
II.Labour cost									
1. Skilled Labour									
61	Mason I & II (Brick Layer I & II Class)		No.	10.18	197.40	187.01	187.01	5.56	5.56
62	Carpenter		No.	1.12	192.00	181.33	181.33	5.88	5.88
63	Painter		No.	1.54	183.78	172.97	172.97	6.25	6.25
64	Fitter I & II		No.	0.75	211.11	200.00	200.00	5.56	5.56
65	Plumber		No.	0.12	181.33	170.67	170.67	6.25	6.25
66	Electrician Gr I & II		No.	0.52	181.33	170.67	170.67	6.25	6.25
2.Unskilled Labour									
67	Mazdoor-men		No.	6.88	203.64	189.09	189.09	7.69	7.69
68	Mazdoor-Women		No.	7.91	163.64	145.45	145.45	12.50	12.50
70	Helper		No.	0.40	190.00	164.00	164.00	15.85	15.85
III.Other expenses									
71	Mixing Charges per mortar		cu.m	1.61	151.11	151.11	151.11	0.00	0.00
72	E.B.Connection charges		No.	0.57	174.48	168.82	187.34	3.35	-6.86
73	Contingencies	2.5%		2.22	175.69	159.43	170.36	10.20	3.13
74	Supervision charges	10%		8.89	175.69	159.43	170.36	10.20	3.13
				100.00					46.35

TABLE - 1
BUILDING CONSTRUCTION COST INDEX

CENTRE : UDHAGAMANDALAM

QUARTER : JUNE 2021
(BASE YEAR:2011-12=100)

Sl. No.	ITEM	Weight	INDEX			% Variation	
			Current Quarter June 2021	Previous Quarter March 2021	Corresponding Qtr. of prev. year June 2020	Previous Quarter June 2021	Corresponding Qtr. of prev. year June 2020
I	<u>MATERIAL COST</u>						
1	BRICKS & TILES	23.58	159.90	133.33	126.57	19.93	26.33
2	SAND, STONE & OTHER QUARRY PRODUCTS	10.09	241.09	227.47	372.44	5.98	-35.27
3	CEMENT & LIME	11.59	143.41	134.31	134.31	6.77	6.77
4	TIMBER & OTHER WOODS	2.90	147.12	119.85	119.85	22.75	22.75
5	IRON & STEEL	4.99	161.66	145.77	129.09	10.90	25.23
6	ANCILLIARY MATERIALS	2.01	154.95	144.68	144.10	7.10	7.53
7	ELECTRICAL FITTINGS	1.26	164.88	165.91	155.67	-0.62	5.91
8	SANITARY WARE & WATER SUPPLY	1.35	208.28	172.68	166.85	20.62	24.83
II	<u>LABOUR COST</u>						
1	SKILLED LABOUR	14.01	195.51	185.00	185.00	5.68	5.68
2	UNSKILLED LABOUR	14.96	182.45	165.71	165.71	10.10	10.10
III	<u>OTHER EXPENSES</u>						
1	MIXING CHARGES	1.59	151.11	151.11	151.11	0.00	0.00
2	E.B.SERVICE CONNECTION CHARGES	0.56	174.48	168.82	187.34	3.35	-6.86
3	CONTINGENCIES	2.22	175.69	158.80	170.36	10.63	3.13
4	SUPERVISION CHARGES	8.89	175.69	158.80	170.36	10.63	3.13
I	<i>MATERIAL COST</i>	57.77	169.67	150.58	168.33	12.68	0.80
II	<i>LABOUR COST</i>	28.98	188.77	175.04	175.04	7.84	7.84
III	<i>OTHER EXPENSES</i>	13.25	172.66	158.30	168.75	9.07	2.32
	BUILDING CONSTRUCTION COST INDEX	100	175.69	158.80	170.36	10.63	3.13