



# Building Construction Cost Index Numbers of Tamilnadu



Quarter Ended: 30.09.2021

DEPARTMENT OF ECONOMICS AND STATISTICS

CHENNAI – 600 006

## **Preface**

Housing and building construction statistics is of prime importance in the fast economy. Next to agriculture, construction is the major employment generator in the unorganized sector.

The Quarterly Report on Building Construction Cost Index for the quarter ended 30.09.2021 provides Building Construction Cost Index with base 2011-12=100 for 16 centres in Tamil Nadu. This report is 2<sup>nd</sup> in series after shifting of base year from 1999-2000 to 2011-12.

The Building Construction Cost Index shows the trend in the building construction cost (mainly cost of material and wages of labour at a specified centre over a period of time.

The Building Construction Cost Index is being compiled quarterly for 16 centres of Tamil Nadu as per the methodology furnished by National Building Organisation, MOHUA, New Delhi.

I hope this report would be useful to the Administrators, Research scholars, Planners, Economists and other organisations of both Public and Private.

Suggestions and comments are solicited from the users of this report for improving the content in the future publications.

for ACS/Commissioner (FAC)

## **CONTENTS**

<b>Sl. No</b>	<b>Description</b>	<b>Page No.</b>
1.	Introduction	1-2
2.	Building Construction Cost Index (BCCI) for the Quarter Ended 30.09.2021	3-21
3.	Tables	22-52
4.	Charts	54-55

## **Table Content**

<b>Table No.</b>	<b>Topic</b>	<b>Page No.</b>
1.	Building Construction Cost Index - Chennai	22
2.	Building Construction Cost Index - Kancheepuram	24
3.	Building Construction Cost Index - Cuddalore	26
4.	Building Construction Cost Index - Vellore	28
5.	Building Construction Cost Index - Salem	30
6.	Building Construction Cost Index - Dharmapuri	32
7.	Building Construction Cost Index - Coimbatore	34
8.	Building Construction Cost Index - Erode	36
9.	Building Construction Cost Index - Thanjavur	38
10.	Building Construction Cost Index - Tiruchirappalli	40
11.	Building Construction Cost Index - Pudukottai	42
12.	Building Construction Cost Index - Madurai	44
13.	Building Construction Cost Index - Virudhunagar	46
14.	Building Construction Cost Index - Palayamkottai	48
15.	Building Construction Cost Index - Nagercoil	50
16.	Building Construction Cost Index - Udhagamandalam	52

## **1. INTRODUCTION**

Housing and Building Construction is one of the most important sector of the economy. Housing and housing related infrastructure indicators in a country is the reflection of a nation's economic and social well-being.

Building construction cost varies with type of construction, design, region, etc. Therefore, in order to study these variations, it is necessary to compile the building cost index numbers for well-demarcated regions within which the design, construction techniques and materials used are similar.

Building Construction Cost Index depicts the trends in the building construction cost at a specified centre over a period of time (Base year to current year). The cost of a building structure comprises mainly of the cost of material and labour.

### **Coverage:**

The Building Construction Cost Index with base 2011-12=100 is compiled Quarterly for 16 centres of Tamil Nadu, viz., Chennai, Kancheepuram, Vellore, Cuddalore, Thanjavur, Dharmapuri, Salem, Tiruchirapalli, Coimbatore, Erode, Udhamandalam, Madurai, Pudukottai, Kanyakumari, Tirunelveli, Virudhunagar.

## **Methodology:**

The Quarterly Building Construction Cost Index is compiled as per the methodology provided by National Building Organisation, New Delhi.

The Index prepared on the basis of standard requirement of all types of materials and their cost for a standard LIG housing unit by TN State Housing Board i.e., it related to construction of LIG house measuring 330 sq.ft.

The index consists of three groups, viz., material cost, labour cost and other expenses. It covers 60 items under material cost, 10 items under labour cost and 4 items under other expenses.

Weights assigned to each item included in the index in proportion of their expenditure to the total cost of base year.

The index is the weighted Arithmetic Mean calculated by using the formula,

$$\text{Index} = \frac{\sum_j W_{ij} * P_j}{\sum_j W_{ij}} * 100$$

$W_{ij}$  is the weight of the item

$P_j$  is the relative Cost of the item (current/constant cost)

The index is calculated at sub group level, next at group level and finally for all the groups combined Building Construction Cost Index.

## **BUILDING CONSTRUCTION COST INDEX (BCCI) FOR THE QUARTER ENDED 30.09.2021**

Among 16 centres of Tamil Nadu, the Building Construction Cost Index topped in the centre Dharmapuri with 214.88 and lowered in the centre Palayamkottai with 176.44 during the quarter ended 30-09-2021.

The centres Vellore, Salem, Dharmapuri and Tiruchirappalli have registered the BCC Index ranges between 200.31 and 214.88.

The centres Kancheepuram, Coimbatore, Erode, Pudukottai and Virudhunagar have recorded the BCC Index varies from 190.25 to 199.61

The centres Chennai, Cuddalore, Madurai, Nagercoil, Udhamandalam have shown the BCC Index varies from 183.00 to 187.55

The BCC Index of 16 centres during the quarter September 2021 have showed variations ranging from (-) 0.06% in Nagercoil to 3.63% in Thanjavur when compared with BCC Index of previous quarter i.e., June 2021.

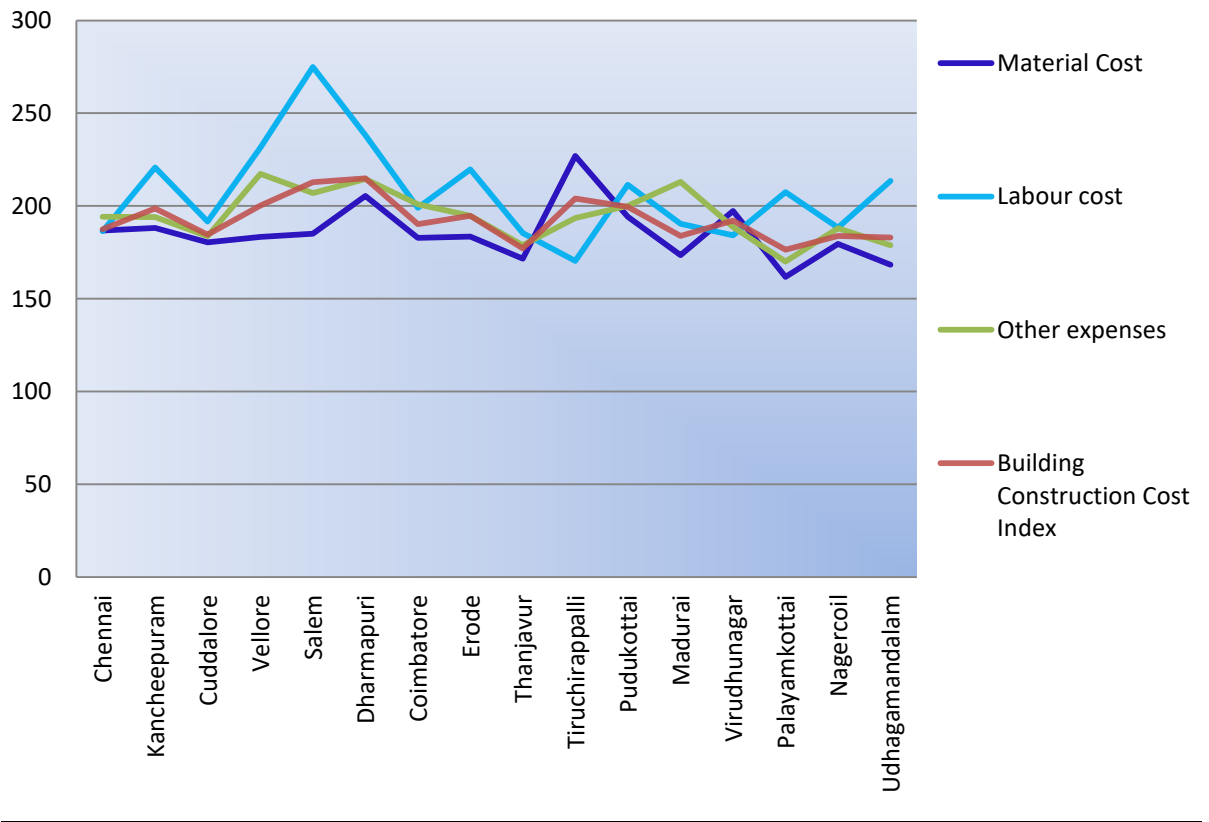
While comparing the BCC Index of September 2021 quarter with that of September 2020 quarter, it showed an upward trend varying from 6.68% in Coimbatore to 16.84% in Kancheepuram.

**Material Cost:** During the quarter 30-09-2021, the Material Cost group index recorded a maximum of 208.70 in Tiruchirappalli and minimum of 161.71 in Palayamkottai.

**Labour Cost:** The highest index of Labour Cost group is 274.94 in Salem and the lowest index is 170.44 in Tiruchirapalli during the September 2021 quarter.

**Other Expenses:** The index of this group during the quarter 30-09-2021 is moderately high in Vellore as 217.23 and low in Tiruchirappalli as 170.10 for the quarter 30.09.2021.

### Building Construction Cost Index for the quarter ended 30.09.2021





**BUILDING CONSTRUCTION COST INDEX FOR THE**  
**QUARTER ENDED 30-09-2021**

(Base Year: 2011-2012=100)

<b>Sl. No.</b>	<b>Centre</b>	<b>Material Cost</b>	<b>Labour Cost</b>	<b>Other expenses</b>	<b>Building Construction Cost Index</b>
1.	Chennai	186.73	186.44	194.24	187.55
2.	Kancheepuram	188.21	220.71	194.03	198.75
3.	Cuddalore	180.43	191.60	183.76	184.57
4.	Vellore	183.38	231.53	217.23	200.31
5.	Salem	185.04	274.94	206.92	212.88
6.	Dharmapuri	205.43	238.13	214.51	214.88
7.	Coimbatore	182.78	199.07	200.94	190.25
8.	Erode	183.43	219.69	194.77	194.69
9.	Thanjavur	171.53	185.45	178.85	177.09
10.	Tiruchirappalli	227.01	170.44	193.57	204.04
11.	Pudukottai	194.18	211.40	199.98	199.61
12.	Madurai	173.56	190.45	213.03	183.82
13.	Virudhunagar	197.30	184.15	188.68	192.13
14.	Palayamkottai	161.71	207.50	170.10	176.44
15.	Nagercoil	179.58	188.27	188.07	183.86
16.	Udhagamandalam	168.34	213.44	178.77	183.00

**BUILDING CONSTRUCTION COST INDEX - QUARTER ENDED**  
**30.09.2021**

**CENTRE: CHENNAI**

The Building Construction Cost Index (BCCI) of Chennai Centre stood at 187.55 during the quarter 30.09.2021 as against 185.28 during the previous quarter 30.06.2021 thereby recorded an increase of 1.23%. All 3 groups have showed an upward trend over the respective index of previous quarter. The increase of 4.78% in Bricks & Tiles subgroup, 3.05% in Sand, Stone & Other quarry products subgroup and 8.52% in Electrical Fittings subgroup have raised the Material Cost group Index. The cost of Bricks and Sand have increased significantly during the quarter 30-09-2021 by 5.26% and 3.23% respectively when compared with that of previous quarter 30-06-2021.

Quarter Ended: 30.09.2021  
Base Year: 2011-2012=100

Sl. No.	Group	Weight	Index		% variation over previous quarter
			Current Quarter 30.09.2021	Previous Quarter 30.06.2021	
1.	Material Cost	54.82	186.73	183.49	1.77
2.	Labour Cost	32.94	186.44	185.69	0.40
3.	Other Expenses	12.24	194.24	192.17	1.07
	<b>Building Construction Cost Index</b>	<b>100</b>	<b>187.55</b>	<b>185.28</b>	<b>1.23</b>

The Index Number compiled for construction of LIG House of an area of 30.81 Sq.mt. (332 Sq.ft) of Tamil Nadu Housing Board.

**CENTRE: KANCHEEPURAM**

The Building Construction Cost Index of Kancheepuram Centre during the quarter 30.09.2021 raised to 198.75 from 195.56 during the previous quarter 30.06.2021 thereby registered a slight increase of 1.63%. The Index of Labour Cost group and Other expenses group have showed an increase of 10.01% and 1.45% respectively over the respective index of previous quarter. The fall in the Cement and Lime subgroup by 12.28% has decreased the Material Cost group Index over that of previous quarter. Though the Material Cost group Index recorded a declining trend, the rise in the Unskilled Labour subgroup Index by 17.94% has reflected in the increase of BCC Index. The cost of Unskilled labour – Mazdoor – Men & Women have increased significantly by 16.67% and 20.0% respectively over that of previous quarter.

Quarter Ended: 30.09.2021  
Base Year: 2011-2012=100

Sl. No.	Group	Weight	Index		% variation over previous quarter
			Current quarter 30.09.2021	Previous quarter 30.06.2021	
1.	Material Cost	57.04	188.21	193.84	-2.90
2.	Labour Cost	30.16	220.71	200.62	10.01
3.	Other Expenses	12.80	194.03	191.25	1.45
	<b>Building Construction Cost Index</b>	<b>100</b>	<b>198.75</b>	<b>195.56</b>	<b>1.63</b>

The Index Number compiled for construction of LIG House of an area of 30.81 Sq.mt. (332 Sq.ft) of Tamil Nadu Housing Board.

## **CENTRE: CUDDALORE**

The Building Construction Cost Index (BCCI) of Cuddalore Centre for the quarter 30.09.2021 stood at 184.57 as against 180.67 during the previous quarter 30.06.2021 thereby recorded an increase of 2.16%. The Index of Material Cost group and Other expenses group have showed an increasing trend of 3.80% and 1.76% over the respective index of previous quarter. The increase of 6.35% in Bricks & Tiles subgroup, 4.62% in Cement & Lime subgroup, 12.25% in Iron & Steel subgroup and 3.18% in Electrical Fittings subgroup have raised the Material Cost group Index. The cost of Bricks and Cement have increased significantly during the quarter 30-09-2021 by 8.33% and 4.65% respectively when compared with that of previous quarter 30-06-2021.

Quarter Ended: 30.09.2021  
Base Year: 2011-2012=100

Sl. No.	Group	Weight	Index		% variation over previous quarter
			Current quarter 30.09.2021	Previous quarter 30.06.2021	
1.	Material Cost	53.36	180.43	173.83	3.80
2.	Labour Cost	32.97	191.60	191.79	-0.10
3.	Other Expenses	13.67	183.76	180.59	1.76
	<b>Building Construction Cost Index</b>	<b>100</b>	<b>184.57</b>	<b>180.67</b>	<b>2.16</b>

The Index Number compiled for construction of LIG House of an area of 30.81 Sq.mt. (332 Sq.ft) of Tamil Nadu Housing Board.

## **CENTRE: VELLORE**

The Building Construction Cost Index (BCCI) of Vellore Centre raised to 200.31 during the quarter 30.09.2021 from 197.33 of the previous quarter 30-06-2021, thereby showed a marginal increase of 1.51% . The Index of Material Cost group and Other expenses group have showed an increase of 2.38% and 1.32% over the respective index of previous quarter. Though the Bricks & Tiles subgroup Index recorded a declining trend, the hike in the Cement & Lime subgroup Index by 17.94% and Iron & Steel subgroup Index by 4.31% have raised the Material cost group Index. The significant increase in the cost of Cement by 10.84% over the previous quarter reflected considerably in the BCC Index .

Quarter Ended: 30.09.2021  
Base Year: 2011-2012=100

Sl. No.	Group	Weight	Index		% variation over previous quarter
			Current quarter 30.09.2021	Previous quarter 30.06.2021	
1.	Material Cost	60.90	183.38	179.11	2.38
2.	Labour Cost	25.80	231.53	231.53	0.00
3.	Other Expenses	13.30	217.23	214.41	1.32
	<b>Building Construction Cost Index</b>	<b>100</b>	<b>200.31</b>	<b>197.33</b>	<b>1.51</b>

The Index Number compiled for construction of LIG House of an area of 30.81 Sq.mt. (332 Sq.ft) of Tamil Nadu Housing Board.

## **CENTRE:SALEM**

During the quarter ended 30.09.2021, the Building Construction Cost Index of Salem Centre stood at 212.88 as against 207.11 during the previous quarter 30-06-2021, thereby registered an increase of 2.79%. All 3 groups have showed an upward trend over the respective index of previous quarter. The Timber & Other woods subgroup and Iron & Steel subgroup have showed an increase of 7.49% in 3.46% in the Material cost group. The increase of Skilled labour subgroup Index by 4.30% and Unskilled labour subgroup Index by 8.64% raised the Labour cost group Index which in turn reflected in the rise of BCC Index. The cost of Mason I & II - Skilled labour by 5.88%, Unskilled labour Mazdoor – Men by 5.88% and Mazdoor – Women by 12.5% have increased over that of previous quarter 30-06-2021 and contributed significantly to the increase of BCC Index.

Quarter Ended: 30.09.2021  
Base Year: 2011-2012=100

Sl. No.	Group	Weight	Index		% variation over previous quarter
			Current quarter 30.09.2021	Previous quarter 30.06.2021	
1.	Material Cost	59.50	184.04	184.50	0.29
2.	Labour Cost	27.81	274.94	257.79	6.65
3.	Other Expenses	12.69	206.92	201.67	2.60
	<b>Building Construction Cost Index</b>	<b>100</b>	<b>212.88</b>	<b>207.11</b>	<b>2.79</b>

The Index Number compiled for construction of LIG House of an area of 30.81 Sq.mt. (332 Sq.ft) of Tamil Nadu Housing Board.

## **CENTRE: DHARMAPURI**

The Building Construction Cost Index of Dharmapuri Centre stood at 214.88 during the quarter ended 30.09.2021 thereby registered an increase of 2.66% when compared to the previous quarter Index of 209.32. The Material Cost group Index and Other expenses group Index have showed an increase of 4.03% and 2.39% over the respective Index of previous quarter 30.06.2021. The increase of 5.9% in Bricks & Tiles subgroup, 10.23% in Cement & Lime subgroup, 1.13% in Iron & Steel subgroup and 6.01% in Sanitary-ware & Water supply subgroup have raised the Material Cost group Index. The cost of Bricks and Cement have increased significantly during the quarter 30-09-2021 by 7.69% and 10.34% respectively when compared with that of previous quarter 30-06-2021.

Quarter Ended: 30.09.2021  
Base Year: 2011-2012=100

Sl. No.	Group	Weight	Index		% variation over previous quarter
			Current quarter 30.09.2021	Previous quarter 30.06.2021	
1.	Material Cost	55.54	205.43	197.48	4.03
2.	Labour Cost	32.27	238.13	238.13	0.00
3.	Other Expenses	12.19	214.51	209.50	2.39
	<b>Building Construction Cost Index</b>	<b>100</b>	<b>214.88</b>	<b>209.32</b>	<b>2.66</b>

The Index Number compiled for construction of LIG House of an area of 30.81 Sq.mt. (332 Sq.ft) of Tamil Nadu Housing Board.

## **CENTRE: COIMBATORE**

The Building Construction Cost Index of Coimbatore Centre for the quarter ended 30.09.2021 stood at 190.25 as against 187.18 during the previous quarter 30-06-2021, thereby recorded an increase of 1.64%. All 3 groups have showed an upward trend over the respective Index of previous quarter. The marginal increase of Bricks & Tiles subgroup, Cement & Lime subgroup and Iron & Steel subgroup by 0.22%, 2.15% and 0.34% in the Material cost group and the increase in the Unskilled labour subgroup by 6.82% in the Labour cost group Index have raised the respective group indices which in turn reflected in the marginal increase of 1.64% in BCC Index. The cost of Cement and Unskilled labour Mazdoor – Men have showed an increase of 2.17% and 14.29% respectively over that of previous quarter 30-06-2021.

Quarter Ended: 30.09.2021  
Base Year: 2011-2012=100

Sl. No.	Group	Weight	Index		% variation over previous quarter
			Current quarter 30.09.2021	Previous quarter 30.06.2021	
1.	Material Cost	55.54	182.78	181.84	0.52
2.	Labour Cost	32.27	199.07	192.23	3.56
3.	Other Expenses	12.19	200.94	198.14	1.41
	<b>Building Construction Cost Index</b>	<b>100</b>	<b>190.25</b>	<b>187.18</b>	<b>1.64</b>

The Index Number compiled for construction of LIG House of an area of 30.81 Sq.mt. (332 Sq.ft) of Tamil Nadu Housing Board.



## **CENTRE: ERODE**

During the quarter 30-09-2021, the Building Construction Cost Index of Erode Centre stood at 194.69 as against 194.07 during the previous quarter 30-06-2021, thereby registered a marginal increase of 0.32%. All 3 groups have showed slight increase over the respective Index of previous quarter. The marginal increase of Bricks & Tiles subgroup, Cement & Lime subgroup, Timber & other woods subgroup and Iron & Steel subgroup by 0.22%, 0.17%, 4.37% and 1.19% respectively in the Material cost group and the increase in the Skilled labour subgroup by 0.3% in the Labour cost group have raised the respective group indices which in turn reflected in the marginal increase of 0.32% in BCC Index. The cost of TW Panel door shutter, PVC door shutter, Mild Steel Rods and Ribbed Tar Steel have showed an increase of 16.67%, 4.35%, 1.64% and 1.5% respectively over that of previous quarter 30-06-2021.

Quarter Ended: 30.09.2021  
Base Year: 2011-2012=100

Sl. No.	Group	Weight	Index		% variation over previous quarter
			Current quarter 30.09.2021	Previous quarter 30.06.2021	
1.	Material Cost	59.92	183.43	182.63	0.44
2.	Labour Cost	26.96	219.69	219.39	0.14
3.	Other Expenses	13.12	194.77	194.25	0.27
	<b>Building Construction Cost Index</b>	<b>100</b>	<b>194.69</b>	<b>194.07</b>	<b>0.32</b>

The Index Number compiled for construction of LIG House of an area of 30.81 Sq.mt. (332 Sq.ft) of Tamil Nadu Housing Board.

## **CENTRE:THANJAVUR**

The Building Construction Cost Index of Thanjavur Centre for the quarter ended 30.09.2021 has increased to 177.09 from 170.89 during the previous quarter 30-06-2021 thereby recorded an increase of 3.63%. All 3 groups have showed an upward trend over the respective Index of previous quarter. The increase of Bricks & Tiles subgroup, Sand, Stone & other quarry products subgroup, Cement & Lime subgroup, Iron & Steel subgroup and Ancillary materials subgroup by 2.82%, 6.65%, 4.82%, 5.11% and 9.60% respectively in the Material cost group and the increase in the Unskilled labour subgroup by 2.69% in the Labour cost group and Mixing charges subgroup by 11.11% in the other expenses group have raised the respective group indices which in turn reflected in the increase of BCC Index. The cost of Bricks, Sand, Stone Jelly, Cement, Unskilled labour Mazdoor – Men & Women have showed an increase of 2.94%, 8.58%, 7.33%, 4.65%, 3.33% and 2.22% respectively over that of previous quarter 30-06-2021.

Quarter Ended: 30.09.2021  
Base Year: 2011-2012=100

Sl. No.	Group	Weight	Index		% variation over previous quarter
			Current quarter 30.09.2021	Previous quarter 30.06.2021	
1.	Material Cost	53.87	171.53	163.85	4.69
2.	Labour Cost	33.11	185.45	182.21	1.78
3.	Other Expenses	13.02	178.85	171.22	4.46
	<b>Building Construction Cost Index</b>	<b>100</b>	<b>177.09</b>	<b>170.89</b>	<b>3.63</b>

The Index Number compiled for construction of LIG House of an area of 30.81 Sq.mt. (332 Sq.ft) of Tamil Nadu Housing Board.

## **CENTRE: TIRUCHIRAPPALLI**

The Building Construction Cost Index of Tiruchirappalli Centre for the quarter 30.09.2021 has raised to 204.04 from 198.39 during the previous quarter 30.06.2021 thereby recorded an increase of 2.85%. All 3 groups have showed an upward trend over the respective Index of previous quarter. The increase of Bricks & Tiles subgroup, Sand, Stone & other quarry products subgroup, Cement & Lime subgroup, Timber & other woods subgroup and Sanitary ware & Water supply subgroup by 0.62%, 0.32%, 0.42%, 1.77% and 4.04% respectively in the Material cost group and the increase in the Unskilled labour subgroup by 13.91% in the Labour cost group and Mixing charges subgroup by 11.11% in other expenses group have raised the respective group indices which in turn reflected in the increase of BCC Index. The cost of Pressed Tiles, TW Panel door shutter and Unskilled labour Mazdoor – Men & Women have showed an increase of 7.69% , 5.10%, 14.29%, and 14.29% respectively over that of previous quarter 30-06-2021.

Quarter Ended: 30.09.2021  
Base Year: 2011-2012=100

Sl. No.	Group	Weight	Index		% variation over previous quarter
			Current quarter 30.09.2021	Previous quarter 30.06.2021	
1.	Material Cost	53.78	227.01	225.88	0.50
2.	Labour Cost	32.51	170.44	157.76	8.04
3.	Other Expenses	13.72	193.57	186.91	3.56
	<b>Building Construction Cost Index</b>	<b>100</b>	<b>204.04</b>	<b>198.39</b>	<b>2.85</b>

The Index Number compiled for construction of LIG House of an area of 30.81 Sq.mt. (332 Sq.ft) of Tamil Nadu Housing Board.

## **CENTRE: PUDUKKOTTAI**

The Building Construction Cost Index of Pudukkottai Centre during the quarter 30.09.2021 stood at 199.61 as against 192.65 during the previous quarter 30.06.2021 thereby registered an increase of 3.45%. All 3 groups have showed an upward trend over the respective Index of previous quarter. The increase of Bricks & Tiles subgroup, Sand, Stone & other quarry products subgroup, Timber & other woods subgroup, Iron & Steel subgroup and Sanitary ware & Water supply subgroup by 6.76%, 4.54%, 4.97%, 0.56% and 4.85% respectively in the Material cost group and the increase of Skilled labour subgroup, Unskilled labour subgroup by 5.52%, 5.43% respectively in the Labour cost group have raised the respective group indices which in turn reflected in the increase of BCC Index. The cost of Bricks, pressed Tiles, Sand, Stone Jelly, Skilled labour – Mason I&II, Unskilled labour Mazdoor – Men & Women have showed an increase of 7.06% , 5.56%, 5.0%, 6.17%, 7.14%, 5.45% and 5.71% respectively over that of previous quarter 30-06-2021.

Quarter Ended: 30.09.2021  
Base Year: 2011-2012=100

Sl. No.	Group	Weight	Index		% variation over previous quarter
			Current quarter 30.09.2021	Previous quarter 30.06.2021	
1.	Material Cost	59.62	194.18	189.26	2.60
2.	Labour Cost	27.05	211.40	200.43	5.48
3.	Other Expenses	13.33	199.98	194.30	2.92
	<b>Building Construction Cost Index</b>	<b>100</b>	<b>199.61</b>	<b>192.95</b>	<b>3.45</b>

The Index Number compiled for construction of LIG House of an area of 30.81 Sq.mt. (332 Sq.ft) of Tamil Nadu Housing Board.

## **CENTRE: MADURAI**

The Building Construction Cost Index of Madurai Centre stood at 183.82 during the quarter 30.09.2021 thereby registered a marginal increase of 0.33% when compared with the previous quarter Index of 183.22. The Labour cost group and Other expenses group have showed an upward trend over the respective Index of previous quarter 30-6-2021. Though the Brick & Tiles subgroup, Sand, Stone & quarry products subgroup, Timber & Other wood subgroup and Iron & Steel subgroup showed an increase of 0.63%, 0.57%, 1.03% and 1.29% over that of previous quarter, the decline in the index of Cement & Lime subgroup by 6.45% has pulled down the Material cost group Index by 1.00% when compared with previous quarter. The cost of Pressed Tiles, Stone Jelly, Stone Jelly chips, Mild Steel Rods, Ribbed Tar Steel and Skilled labour Mason I&II and Mixing charges have increased by 12.0%, 1.82%, 1.79%, 3.13%, 1.54%, 6.25% and 14.29% respectively over that of previous quarter 30-6-2021 and contributed significantly to increase of BCC Index.

Quarter Ended: 30.09.2021  
Base Year: 2011-2012=100

Sl. No.	Group	Weight	Index		% variation over previous quarter
			Current quarter 30.09.2021	Previous quarter 30.06.2021	
1.	Material Cost	56.39	173.56	176.01	-1.39
2.	Labour Cost	30.79	190.45	186.65	2.04
3.	Other Expenses	12.82	213.03	206.69	3.07
	<b>Building Construction Cost Index</b>	<b>100</b>	<b>183.82</b>	<b>183.22</b>	<b>0.33</b>

The Index Number compiled for construction of LIG House of an area of 30.81 Sq.mt. (332 Sq.ft) of Tamil Nadu Housing Board.

## **CENTRE :VIRUDHUNAGAR**

The Building Construction Cost Index of Virudhunagar Centre for the quarter ended 30.09.2021 stood at 192.13 as against 193.40 during the previous quarter 30-6-2021 thereby showed a slight decrease of 0.66%. The Material cost group and Other expenses group have showed an downward trend over the respective Index of previous quarter and the Labour cost group Index remained the same as of previous quarter. Though the Timber & Other wood subgroup and Iron & Steel subgroup showed an increase of 1.71% and 1.98%, the decline in the index of Cement & Lime subgroup by 6.45% has pulled down the Material cost group Index by 1.00% when compared with that of previous quarter. There is no change in the cost of Bricks and Sand over the quarters and the cost of Cement showed a decrease of 6.52% over that of previous quarter 30-06-2021.

Quarter Ended: 30.09.2021  
Base Year: 2011-2012=100

Sl. No.	Group	Weight	Index		% variation over previous quarter
			Current quarter 30.09.2021	Previous quarter 30.06.2021	
1.	Material Cost	56.23	196.63	198.64	-1.01
2.	Labour Cost	30.90	184.15	184.15	0.00
3.	Other Expenses	12.87	188.32	189.41	-0.58
	<b>Building Construction Cost Index</b>	<b>100</b>	<b>191.71</b>	<b>192.97</b>	<b>-0.66</b>

The Index Number compiled for construction of LIG House of an area of 30.81 Sq.mt. (332 Sq.ft) of Tamil Nadu Housing Board.

## **CENTRE:PALAYAMKOTTAI**

The Building Construction Cost Index of Palayamkottai Centre has increased to 176.44 during the quarter 30.09.2021 from 169.41 during the previous quarter 30.06.2021 thereby recorded an increase of 4.15%. All 3 groups have recorded an upward trend over the respective Index of previous quarter. The increase of Sand, Stone & other quarry products subgroup, Timber & other woods subgroup, Iron & Steel subgroup and Sanitary ware & Water supply subgroup by 2.39%, 4.11%, 3.44%, 4.26% and 6.56% respectively in the Material cost group and the increase of Skilled labour subgroup by 6.54%, Unskilled labour subgroup by 10.3% in the Labour cost group and Mixing charges subgroup by 10% in Other expenses group have raised the respective group indices which in turn reflected in the increase of BCC Index. The cost of Sand, Mild Steel Rod, Ribbed Tar Steel, TW Frame, Skilled labour – Mason I&II, Unskilled labour Mazdoor – Men & Women, Mixing charges have showed an increase of 3.26%, 4.78%, 4.87%, 7.92%, 6.25%, 8.7%, 11.76% and 10.0% respectively over that of previous quarter 30-6-2021.

Quarter Ended: 30.09.2021  
Base Year: 2011-2012=100

Sl. No.	Group	Weight	Index		% variation over previous quarter
			Current quarter 30.09.2021	Previous quarter 30.06.2021	
1.	Material Cost	57.32	161.71	159.48	1.40
2.	Labour Cost	29.82	207.50	191.30	8.47
3.	Other Expenses	12.86	170.10	162.91	4.41
	<b>Building Construction Cost Index</b>	<b>100</b>	<b>176.44</b>	<b>169.41</b>	<b>4.15</b>

The Index Number compiled for construction of LIG House of an area of 30.81 Sq.mt. (332 Sq.ft) of Tamil Nadu Housing Board.

## **CENTRE: NAGERCOIL**

The Building Construction Cost Index of Nagercoil Centre for the quarter 30.09.2021 stood at 183.86 as against 183.98 during the previous quarter 30-6-2021 thereby showed a marginal decrease of 0.07%. The Material cost group and Other expenses group have showed an downward trend over the respective Index of previous quarter and the Labour cost group Index remained the same as of previous quarter. Though the Bricks & Tiles subgroup, Iron & Steel subgroup and Ancillary materials subgroup showed an increase of 0.28%, 4.79% and 0.22% over the previous quarter, the decline in the index of Cement & Lime subgroup by 3.29% has pulled down the Material cost group Index by 1.00% when compared with that of previous quarter. There is no change in the cost of Sand, Skilled labour and Unskilled labour over the quarters and the cost of Cement showed a decrease of 3.33% over that of previous quarter 30-06-2021 which reflect in the decline of BCC Index.

Quarter Ended: 30.09.2021  
Base Year: 2011-2012=100

Sl. No.	Group	Weight	Index		% variation over previous quarter
			Current quarter 30.09.2021	Previous quarter 30.06.2021	
1.	Material Cost	50.44	179.13	179.33	-0.11
2.	Labour Cost	35.60	188.27	188.27	0.00
3.	Other Expenses	13.96	187.87	187.96	-0.05
	<b>Building Construction Cost Index</b>	<b>100</b>	<b>183.60</b>	<b>183.72</b>	<b>-0.06</b>

The Index Number compiled for construction of LIG House of an area of 30.81 Sq.mt. (332 Sq.ft) of Tamil Nadu Housing Board.



## **CENTRE: UDHAGAMANDALAM**

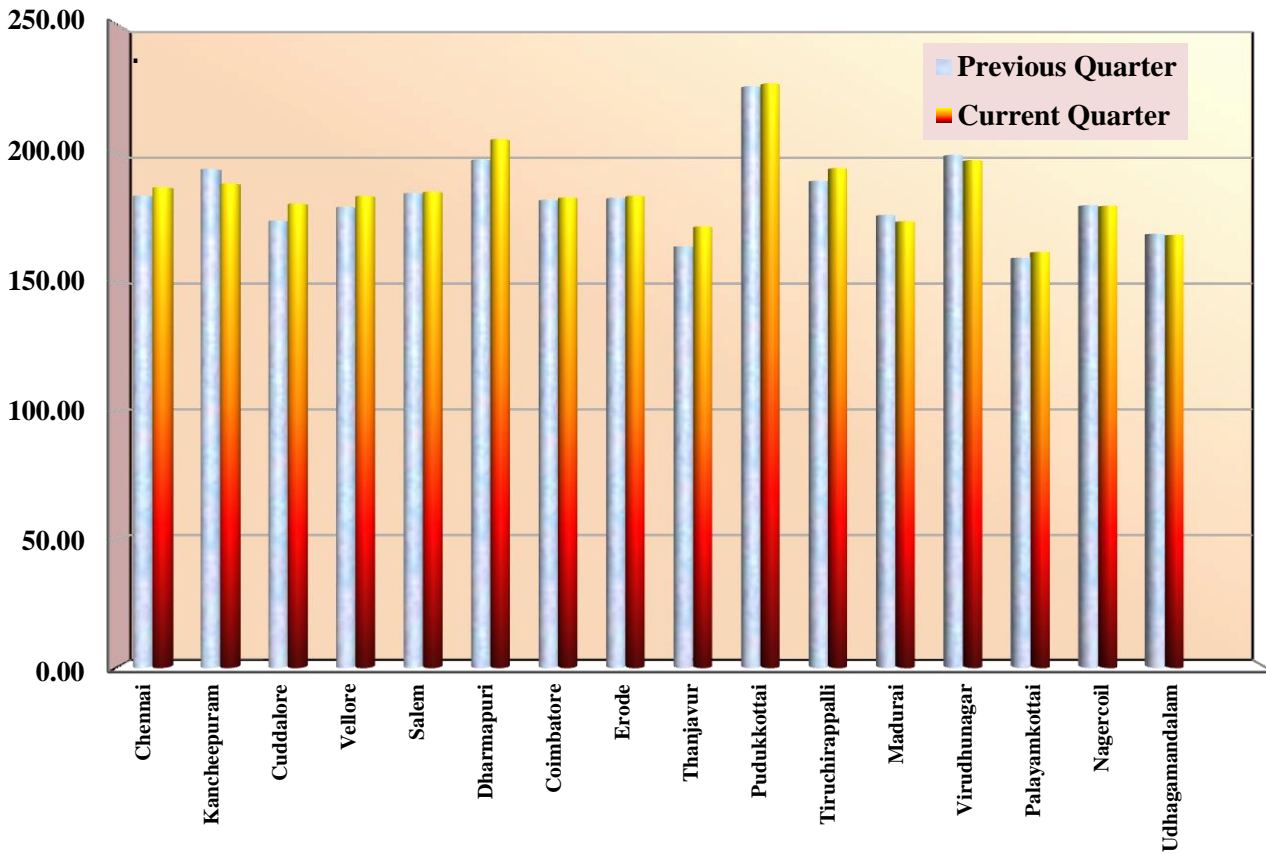
The Building Construction Cost Index of Udhagamandalam Centre stood at 183.00 during the quarter 30.09.2021 thereby registered an increase of 4.51% when compared with the previous quarter Index of 175.09. The Labour cost group and Other expenses group have showed an upward trend over the respective Index of previous quarter 30-6-2021. As there is no change in Bricks & Tiles subgroup, Sand, Stone & other quarry products, subgroup, Iron & Steel subgroup, the decline in the index of Cement & Lime subgroup by 2.11% has pulled down the Material cost group Index by 0.24% when compared with previous quarter. However, the increase of Skilled labour subgroup Index by 0.25% and Unskilled labour subgroup by 25.94% have raised the Labour cost group Index by 13.07% over the previous quarter.

Quarter Ended: 30.09.2021  
Base Year: 2011-2012=100

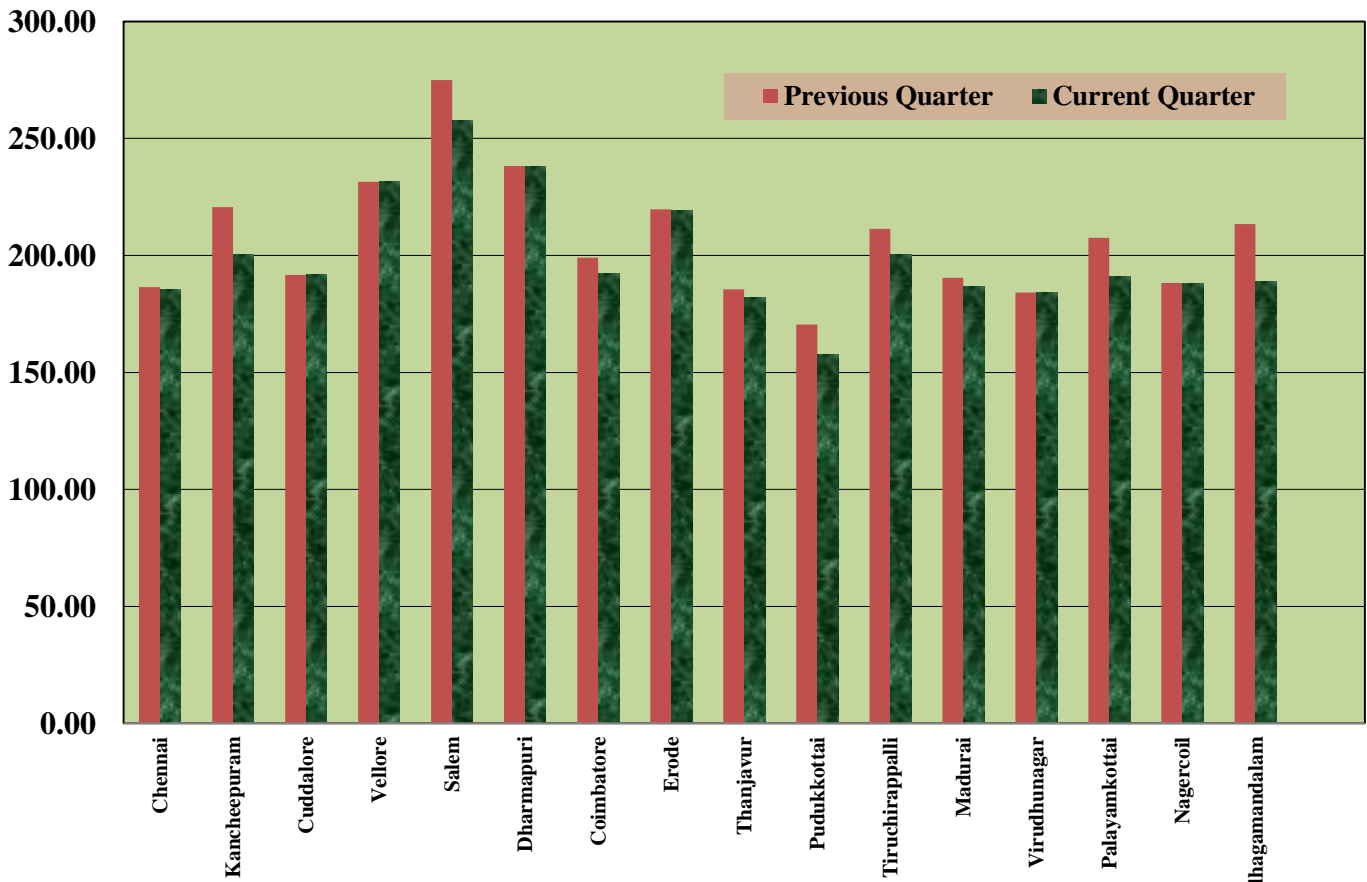
Sl. No.	Group	Weight	Index		% variation over previous quarter
			Current quarter 30.09.2021	Previous quarter 30.06.2021	
1.	Material Cost	57.77	168.34	168.75	-0.24
2.	Labour Cost	28.98	213.44	188.77	13.07
3.	Other Expenses	13.25	178.77	172.16	3.84
	<b>Building Construction Cost Index</b>	<b>100</b>	<b>183.00</b>	<b>175.09</b>	<b>4.51</b>

The Index Number compiled for construction of LIG House of an area of 30.81 Sq.mt. (332 Sq.ft) of Tamil Nadu Housing Board.

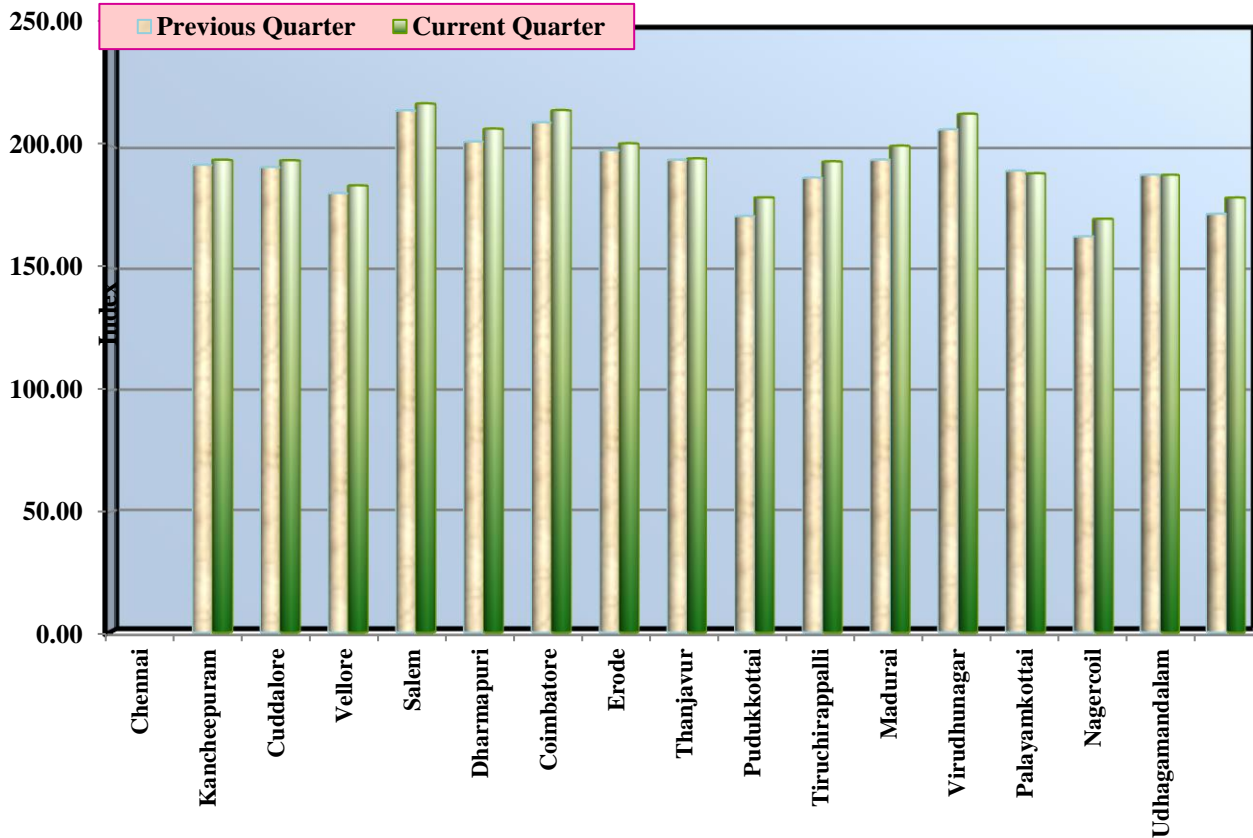
## COMPARISON OF MATERIAL COST FOR THE Q.E. 30.09.2021 WITH PREVIOUS Q.E. 30.06.2021



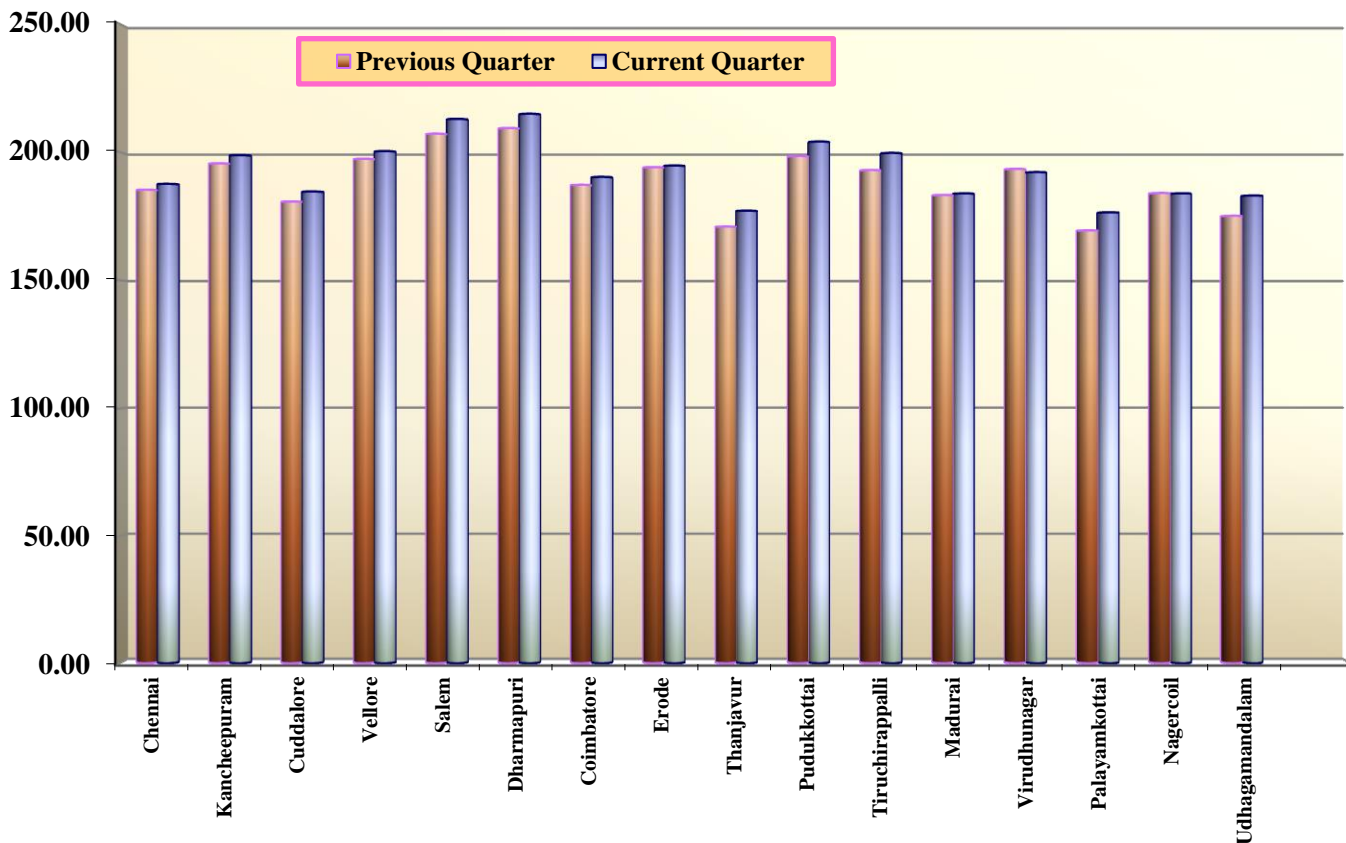
## COMPARISON OF LABOUR COST FOR THE Q.E. 30.09.2021 WITH PREVIOUS Q.E. 30.06.2021



## COMPARISON OF OTHER COST FOR THE Q.E. 30.09.2021 WITH PREVIOUS Q.E. 30.06.2021



## COMPARISON OF BUILDING CONSTRUCTION COST INDEX FOR THE Q.E. 30.09.2021 WITH PREVIOUS Q.E. 30.06.2021



**TABLE - 1A**  
**BUILDING CONSTRUCTION COST INDEX**  
**Item-wise Cost relative**

Centre : Chennai

Quarter : September 2021  
(Base year:2011-12=100)

Sl. No.	Item	Specification	Unit	Weight	COST RELATIVE			% Variation	
					Current Quarter Sep 2021	Previous Quarter June 2021	Corresponding Qtr. of prev. year Sep 2020	Previous Quarter June 2021	Corresponding Qtr. of prev. year Sep 2020
<b>I. Material cost</b>									
<b>1.Bricks and Tiles</b>									
1	Bricks	9"x4.5"x2.25"	1000 Nos.	18.07	155.04	147.29	124.03	5.26	25.00
2	Brick Jelly	20mm	cu.m	0.73	174.29	174.29	162.96	0.00	6.95
3	Pressed Tiles	9"x9"	1000 Nos.	1.30	188.24	176.47	141.18	6.67	33.33
4	Glazes tiles	9"x9"	1 No.	0.10	391.85	391.85	376.18	0.00	4.17
5	Ceramic tiles	9"x9"	1 No.	0.74	266.11	266.11	252.10	0.00	5.56
<b>2.Sand stone and other Quarry Products</b>									
6	Sand for mortar	River	cu.m	4.44	426.66	413.29	386.63	3.23	10.35
7	Stone Jelly (HBSJ)	40mm	cu.m	4.28	192.50	185.06	148.05	4.02	30.03
8	Stone Jelly (HBSJ)	20mm	cu.m	0.37	174.08	166.74	155.61	4.41	11.87
9	Stone Jelly Chips (HBSJ)	10mm	cu.m	1.50	162.74	162.74	162.74	0.00	0.00
10	Rough stone		cu.m	0.40	152.66	152.66	142.37	0.00	7.23
11	Bond stone		cu.m	0.55	160.60	160.60	155.10	0.00	3.55
<b>3.Cement and Lime</b>									
12	Cement		M.T	11.02	145.15	151.90	145.15	-4.44	0.00
13	Lime stone		cu.m	0.22	240.23	205.91	120.11	16.67	100.00
<b>4.Timber and other wood</b>									
14	TW Frame		sq.m	1.23	277.19	277.19	277.19	0.00	0.00
15	TW Panel door shutter		sq.m	0.54	159.66	159.66	144.67	0.00	10.36
16	Solid PVC door shutter		sq.m	0.30	209.30	209.30	186.05	0.00	12.50
<b>5.Iron and Steel</b>									
17	Mild Steel Rods	10mm	MT	1.20	138.33	149.63	119.70	-7.55	15.56
18	Ribbed Tar Steel (RTS)	8mm	MT	1.97	138.44	148.75	124.84	-6.93	10.89
19	Binding Wire		Kg	0.40	155.25	151.60	120.55	2.41	28.79
20	Door catch		No.	0.03	121.67	121.67	110.00	0.00	10.61
21	Hold fast		No.	0.03	120.00	120.00	110.00	0.00	9.09
22	Tower bolt receiver		No.	0.03	272.00	217.60	182.40	25.00	49.12
23	Steel window ventilator		Ka	1.12	208.70	208.70	191.30	0.00	9.09
<b>6.Ancillary Materials</b>									
25	Ready mix Prime paint		Ltr	0.09	162.09	162.09	151.63	0.00	6.90
26	Ready mix Synthetic Enamel paint		Ltr	0.05	185.11	144.87	144.87	27.78	27.78
27	Cement paint		Kg	1.73	130.43	130.43	119.57	0.00	9.09
28	Matt paint		Ltr	0.08	110.29	110.29	104.78	0.00	5.26
<b>7.Electrical Fittings</b>									
29	1.5sqmm copper cable		100 meter	0.33	173.65	122.16	122.16	42.16	42.16
30	PVC Pipe	20mm	1metre	0.16	408.43	408.43	408.43	0.00	0.00
31	PVC bend		No.	0.07	252.96	237.15	173.91	6.67	45.45
32	PVC tee		No.	0.04	156.86	141.18	117.65	11.11	33.33
33	5amps 5 pin at switch board	itself	No.	0.00	245.90	249.18	150.82	-1.32	63.04
34	5amps 5 pin non interlocking switch		No.	0.01	197.40	197.40	197.40	0.00	0.00
35	Ceiling Rose		No.	0.02	141.14	141.14	141.14	0.00	0.00
36	Bakelite pattern Holder		No.	0.02	137.93	137.93	151.72	0.00	-9.09
37	Bulk Head Fittings		No.	0.01	260.00	240.00	240.00	8.33	8.33
38	8 SWG GI wire		kg	0.03	176.21	176.21	132.16	0.00	33.33
39	32 amps 500V fuse unit		No.	0.01	151.16	139.53	139.53	8.33	8.33
40	Junction box		No.	0.03	433.33	433.33	420.00	0.00	3.17
41	Jointbox		No.	0.01	319.15	319.15	276.60	0.00	15.38
42	Hvlem sheet		No.	0.01	139.35	139.35	139.35	0.00	0.00
43	Flush type switch		No.	0.04	295.08	295.08	249.18	0.00	18.42
44	11wCFL bulb	11w	No.	0.01	160.49	160.49	148.15	0.00	8.33
45	Calling bell		No.	0.01	200.00	200.00	173.33	0.00	15.38
46	25amps single phase ELCB		No.	0.22	113.56	113.56	100.95	0.00	12.50
47	25mm GI pipe line	25mm	1 metre	0.05	165.38	161.54	161.54	2.38	2.38
48	GI Pipe 20mm(Earth pit)	20mm	1 metre	0.02	166.67	162.39	132.48	2.63	25.81
49	40mm dia GI pipe	40mm	1 metre	0.01	215.00	215.00	201.56	0.00	6.67
50	15mm GI Pipe	15mm	1 metre	0.01	297.85	297.85	297.85	0.00	0.00
51	GI reducers		No.	0.00	151.92	144.32	132.93	5.26	14.29
<b>8.Sanitary &amp; Water Supply</b>									
52	Indian Water Closet		No.	0.05	200.00	200.00	171.43	0.00	16.67
53	S.W.Gully Trap	6"x4"	No.	0.02	203.99	203.99	203.99	0.00	0.00
54	S.W.Bend	4"	No.	0.01	235.29	235.29	199.10	0.00	18.18
55	GI Pipe 20mm dia Hotwater	20mm	1 metre	0.06	316.67	305.56	215.28	3.64	47.10
56	Stone ware pipe 100mm	100mm	1 metre	0.15	432.99	432.99	268.04	0.00	61.54
57	PVC 32mm dia	32mm	1 metre	0.14	178.65	168.14	168.14	6.25	6.25
58	PVC 20mm dia	20mm	1 metre	0.02	202.88	186.87	170.85	8.57	18.75
59	PVC rain water down fall 110mm	110mm	1 metre	0.27	159.86	149.66	112.24	6.82	42.42
60	HDPE Cylindrical		No.	0.45	195.38	195.38	187.69	0.00	4.10
<b>II.Labour cost</b>									
<b>1. Skilled Labour</b>									
61	Mason I & II ( Brick Layer I & II Class )		No.	12.12	163.64	163.64	163.64	0.00	0.00
62	Carpenter		No.	1.12	200.00	200.00	200.00	0.00	0.00
63	Painter		No.	1.39	200.00	200.00	200.00	0.00	0.00
64	Fitter I & II		No.	0.70	225.00	200.00	187.50	12.50	20.00
65	Plumber		No.	0.11	225.00	212.50	200.00	5.88	12.50
66	Electrician Gr. I & II		No.	0.46	212.50	200.00	200.00	6.25	6.25
<b>2.Unskilled Labour</b>									
67	Mazdoor-men		No.	8.35	175.00	175.00	162.50	0.00	7.69
68	Mazdoor-Women		No.	8.43	213.33	213.33	195.56	0.00	9.09
70	Helper		No.	0.26	444.44	444.44	380.95	0.00	16.67
<b>III.Other expenses</b>									
71	Mixing Charges per mortar		cu.m	0.75	233.33	233.33	233.33	0.00	0.00
72	E.B.Connection charges		No.	0.38	313.04	313.04	311.03	0.00	0.64
73	Contingencies	2.5%		2.22	187.55	185.28	169.98	1.23	10.34
74	Supervision charges	10%		8.89	187.55	185.28	169.98	1.23	10.34
				100.00					

TABLE - 1

**BUILDING CONSTRUCTION COST INDEX**

QUARTER : SEPTEMBER 2021

(BASE YEAR:2011-12=100)

CENTRE : CHENNAI

Sl. No.	ITEM	Weight	INDEX			% Variation	
			Current Quarter Sep 2021	Previous Quarter June 2021	Corresponding Qtr. of prev. year Sep 2020	Previous Quarter June 2021	Corresponding Qtr. of prev. year Sep 2020
<b>I</b>	<b><u>MATERIAL COST</u></b>						
1	BRICKS & TILES	20.93	162.75	155.33	132.11	4.78	23.20
2	SAND, STONE & OTHER QUARRY PRODUCTS	11.55	275.23	267.09	242.14	3.05	13.66
3	CEMENT & LIME	11.24	147.02	152.97	144.65	-3.88	1.64
4	TIMBER & OTHER WOODS	2.08	236.56	236.56	229.24	0.00	3.19
5	IRON & STEEL	4.78	156.69	163.19	138.81	-3.98	12.88
6	ANCILLIARY MATERIALS	1.96	132.47	131.43	121.09	0.79	9.40
7	ELECTRICAL FITTINGS	1.13	214.41	197.59	185.59	8.52	15.53
8	SANITARY WARE & WATER SUPPLY	1.15	222.12	217.68	178.57	2.04	24.38
<b>II</b>	<b><u>LABOUR COST</u></b>						
1	SKILLED LABOUR	15.90	173.91	172.36	171.73	0.90	1.27
2	UNSKILLED LABOUR	17.05	198.13	198.13	182.23	0.00	8.73
<b>III</b>	<b><u>OTHER EXPENSES</u></b>						
1	MIXING CHARGES	0.75	233.33	233.33	233.33	0.00	0.00
2	E.B.SERVICE CONNECTION CHARGES	0.38	313.04	313.04	311.03	0.00	0.64
3	CONTINGENCIES	2.22	187.55	185.28	169.98	1.23	10.34
4	SUPERVISION CHARGES	8.89	187.55	185.28	169.98	1.23	10.34
<b>I</b>	<b><i>MATERIAL COST</i></b>	<b>54.82</b>	<b>186.73</b>	<b>183.49</b>	<b>163.83</b>	<b>1.77</b>	<b>13.98</b>
<b>II</b>	<b><i>LABOUR COST</i></b>	<b>32.94</b>	<b>186.44</b>	<b>185.69</b>	<b>177.16</b>	<b>0.40</b>	<b>5.24</b>
<b>III</b>	<b><i>OTHER EXPENSES</i></b>	<b>12.24</b>	<b>194.24</b>	<b>192.17</b>	<b>178.22</b>	<b>1.07</b>	<b>8.99</b>
	<b>BUILDING CONSTRUCTION COST INDEX</b>	<b>100</b>	<b>187.55</b>	<b>185.28</b>	<b>169.98</b>	<b>1.23</b>	<b>10.34</b>

**TABLE - 2A**  
**BUILDING CONSTRUCTION COST INDEX**  
**Item-wise Cost relative**

Centre : Kancheepuram

Quarter : September 2021  
(Base year:2011-12=100)

Sl. No.	Item	Specification	Unit	Weight	COST RELATIVE			% Variation	
					Current Quarter Sep 2021	Previous Quarter June 2021	Corresponding Qtr. of prev. year Sep 2020	Previous Quarter June 2021	Corresponding Qtr. of prev. year Sep 2020
<b>I. Material cost</b>									
<b>1.Bricks and Tiles Products</b>									
1	Bricks	9"x4.5"x2.25"	1000 Nos.	15.52	172.04	172.04	133.33	0.00	29.03
2	Brick Jelly	20mm	cu.m	0.61	203.13	203.13	150.00	0.00	35.42
3	Pressed Tiles	9"x9"	1000 Nos.	1.73	157.07	157.07	127.75	0.00	22.95
4	Glazes tiles	9"x9"	1 No.	0.15	380.95	380.95	309.52	0.00	23.08
5	Ceramic tiles	9"x9"	1 No.	0.86	357.14	357.14	321.43	0.00	11.11
<b>2.Sand stone and other Quarry Products</b>									
6	Sand for mortar	River	cu.m	3.57	504.63	504.63	510.23	0.00	-1.10
7	Stone Jelly (HBSJ)	40mm	cu.m	4.24	137.91	146.73	144.84	-6.01	-4.78
8	Stone Jelly (HBSJ)	20mm	cu.m	0.40	128.05	135.98	141.64	-5.83	-9.60
9	Stone Jelly Chips (HBSJ)	10mm	cu.m	1.64	161.95	171.98	164.82	-5.83	-1.74
10	Rough stone		cu.m	0.48	243.06	243.06	208.33	0.00	16.67
11	Bond stone		cu.m	0.00	0.00	0.00	0.00	0.00	0.00
<b>3.Cement and Lime</b>									
12	Cement		M.T	13.32	139.80	159.77	124.82	-12.50	12.00
13	Lime stone		cu.m	0.26	145.50	145.50	142.55	0.00	2.07
<b>4.Timber and other wood</b>									
14	TW Frame		sq.m	1.67	270.27	262.76	240.24	2.86	12.50
15	TW Panel door shutter		sq.m	0.76	275.00	275.00	271.43	0.00	1.32
16	Solid PVC door shutter		sq.m	0.68	100.00	100.00	81.25	0.00	23.08
<b>5.Iron and Steel</b>									
17	Mild Steel Rods	10mm	MT	1.51	130.79	139.51	106.81	-6.25	22.45
18	Ribbed Tar Steel (RTS)	8mm	MT	2.46	131.51	140.11	109.68	-6.14	19.90
19	Binding Wire		Kg	0.54	129.55	126.32	116.60	2.56	11.11
20	Door catch		No.	0.03	134.83	134.83	122.57	0.00	10.00
21	Hold fast		No.	0.07	181.82	181.82	181.82	0.00	0.00
22	Tower bolt receiver		No.	0.02	545.45	545.45	500.00	0.00	9.09
23	Steel window ventilator		Kg	1.33	191.30	191.30	165.22	0.00	15.79
<b>6.Ancillary Materials</b>									
25	Ready mix Prime paint		Ltr	0.11	150.38	150.38	150.38	0.00	0.00
26	Ready mix Synthetic Enamel paint		Ltr	0.07	142.35	142.35	117.44	0.00	21.21
27	Cement paint		Kg	2.06	195.65	195.65	179.35	0.00	9.09
28	Matt paint		Ltr	0.11	204.08	204.08	119.05	0.00	71.43
<b>7.Electrical Fittings</b>									
29	1.5sqmm copper cable		100 meter	0.59	154.76	134.92	115.08	14.71	34.48
30	PVC Pipe	20mm	1metre	0.08	400.00	380.00	311.11	5.26	28.57
31	PVC bend		No.	0.04	476.19	476.19	349.21	0.00	36.36
32	PVC tee		No.	0.02	326.53	326.53	299.32	0.00	9.09
33	5amps 5 pin at switch board itself		No.	0.00	114.29	114.29	114.29	0.00	0.00
34	5amps 5 pin non interlocking switch		No.	0.01	222.22	222.22	200.00	0.00	11.11
35	Ceiling Rose		No.	0.02	209.39	209.39	180.51	0.00	16.00
36	Bakelite pattern Holder		No.	0.03	137.93	137.93	114.94	0.00	20.00
37	Bulk Head Fittings		No.	0.02	162.03	151.90	116.46	6.67	39.13
38	8 SWG GI wire		kg	0.05	176.27	168.14	149.15	4.84	18.18
39	32 amps 500V fuse unit		No.	0.01	187.50	187.50	165.00	0.00	13.64
40	Junction box		No.	0.03	200.00	200.00	160.00	0.00	25.00
41	Jointbox		No.	0.02	127.66	127.66	106.38	0.00	20.00
42	Hylem sheet		No.	0.01	144.00	144.00	138.42	0.00	4.03
43	Flush type switch		No.	0.04	250.00	250.00	200.00	0.00	25.00
44	11wCFL bulb	11w	No.	0.01	133.33	133.33	108.89	0.00	22.45
45	Calling bell		No.	0.01	213.33	213.33	213.33	0.00	0.00
46	25amps single phase ELCB		No.	0.15	200.00	200.00	166.67	0.00	20.00
47	25mm GI pipe line	25mm	1 metre	0.06	258.82	258.82	243.14	0.00	6.45
48	GI Pipe 20mm(Earth pit)	20mm	1 metre	0.02	142.24	129.31	129.31	10.00	10.00
49	40mm dia GI pipe	40mm	1 metre	0.01	265.31	265.31	231.29	0.00	14.71
50	15mm GI Pipe	15mm	1 metre	0.01	285.71	285.71	277.78	0.00	2.86
51	GI reducers		No.	0.00	192.31	192.31	192.31	0.00	0.00
<b>8.Sanitary &amp; Water Supply</b>									
52	Indian Water Closet		No.	0.10	135.59	135.59	127.12	0.00	6.67
53	S.W.Gully Trap	6"x4"	No.	0.03	132.48	132.48	132.48	0.00	0.00
54	S.W.Bend	4"	No.	0.02	204.65	148.84	148.84	37.50	37.50
55	GI Pipe 20mm dia Hotwater line	20mm	1 metre	0.14	178.57	171.43	114.29	4.17	56.25
56	Stone ware pipe 100mm	100mm	1 metre	0.27	118.03	118.03	118.03	0.00	0.00
57	PVC 32mm dia	32mm	1 metre	0.16	255.32	255.32	212.77	0.00	20.00
58	PVC 20mm dia	20mm	1 metre	0.02	324.32	324.32	291.89	0.00	11.11
59	PVC rain water down fall 110mm	110mm	1 metre	0.32	204.08	187.07	187.07	9.09	9.09
60	HDPE Cylindrical		No.	0.54	169.23	169.23	160.00	0.00	5.77
<b>II.Labour cost</b>									
<b>1. Skilled Labour</b>									
Mason I & II (Brick Layer I & II Class )									
61	Carpenter		No.	10.83	169.70	169.70	157.58	0.00	7.69
62	Painter		No.	1.22	193.94	193.94	145.45	0.00	33.33
63	Fitter I & II		No.	1.50	220.69	220.69	165.52	0.00	33.33
64	Plumber		No.	0.83	175.00	175.00	150.00	0.00	16.67
65	Electrician Gr I & II		No.	0.13	193.94	193.94	145.45	0.00	33.33
66	Electrician Gr I & II		No.	0.48	200.00	200.00	171.43	0.00	16.67
<b>2.Unskilled Labour</b>									
67	Mazdoor-men		No.	7.49	232.37	199.17	199.17	16.67	16.67
68	Mazdoor-Women		No.	7.37	290.91	242.42	193.94	20.00	50.00
70	Helper		No.	0.31	326.80	326.80	261.44	0.00	25.00
<b>III.Other expenses</b>									
71	Mixing Charges per mortar		cu.m	1.07	166.67	166.67	138.89	0.00	20.00
72	E.B.Connection charges		No.	0.63	156.74	177.63	133.17	-11.76	17.70
73	Contingencies	2.5%		2.22	198.75	195.56	170.12	1.63	16.83
74	Supervision charges	10%		8.89	198.75	195.56	170.12	1.63	16.83
				100.00					

**TABLE - 2**  
**BUILDING CONSTRUCTION COST INDEX**

QUARTER : SEPTEMBER 2021

CENTRE : KANCHEEPURAM

(BASE YEAR:2011-12=100)

Sl. No.	ITEM	Weight	INDEX			% Variation	
			Current Quarter Sep 2021	Previous Quarter June 2021	Corresponding Qtr. of prev. year Sep 2020	Previous Quarter June 2021	Corresponding Qtr. of prev. year Sep 2020
<b>I</b>	<b><u>MATERIAL COST</u></b>						
1	BRICKS & TILES	18.87	181.76	181.76	143.32	0.00	26.82
2	SAND, STONE & OTHER QUARRY PRODUCTS	10.33	272.72	278.25	276.89	-1.99	-1.51
3	CEMENT & LIME	13.58	139.91	159.49	125.16	-12.28	11.78
4	TIMBER & OTHER WOODS	3.11	234.41	230.38	213.32	1.75	9.89
5	IRON & STEEL	5.95	146.58	152.06	124.26	-3.60	17.97
6	ANCILLIARY MATERIALS	2.35	192.30	192.30	173.39	0.00	10.91
7	ELECTRICAL FITTINGS	1.25	202.37	191.12	162.05	5.88	24.88
8	SANITARY WARE & WATER SUPPLY	1.60	176.31	171.62	158.43	2.73	11.29
<b>II</b>	<b><u>LABOUR COST</u></b>						
1	SKILLED LABOUR	15.00	178.25	178.25	157.30	0.00	13.32
2	UNSKILLED LABOUR	15.16	262.71	222.75	197.88	17.94	32.76
<b>III</b>	<b><u>OTHER EXPENSES</u></b>						
1	MIXING CHARGES	1.07	166.67	166.67	138.89	0.00	20.00
2	E.B.SERVICE CONNECTION CHARGES	0.63	156.74	177.63	133.17	-11.76	17.70
3	CONTINGENCIES	2.22	198.75	195.56	170.12	1.63	16.83
4	SUPERVISION CHARGES	8.89	198.75	195.56	170.12	1.63	16.83
<b>I</b>	<b><i>MATERIAL COST</i></b>	<b>57.04</b>	<b>188.21</b>	<b>193.84</b>	<b>167.09</b>	-2.90	12.64
<b>II</b>	<b><i>LABOUR COST</i></b>	<b>30.16</b>	<b>220.71</b>	<b>200.62</b>	<b>177.70</b>	10.01	24.20
<b>III</b>	<b><i>OTHER EXPENSES</i></b>	<b>12.80</b>	<b>194.03</b>	<b>191.25</b>	<b>165.71</b>	1.45	17.09
	<b>BUILDING CONSTRUCTION COST INDEX</b>	<b>100</b>	<b>198.75</b>	<b>195.56</b>	<b>170.12</b>	1.63	16.83

**TABLE - 3A**  
**BUILDING CONSTRUCTION COST INDEX**  
Item-wise Cost relative

Quarter : September 2021  
(Base year:2011-12=100)

Centre : Cuddalore

Sl. No.	Item	Specification	Unit	Weight	COST RELATIVE			% Variation	
					Current Quarter Sep 2021	Previous Quarter June 2021	Corresponding Qtr. of prev. year Sep 2020	Previous Quarter June 2021	Corresponding Qtr. of prev. year Sep 2020
<b>I. Material cost</b>									
<b>1.Bricks and Tiles Products</b>									
1	Bricks	9"x4.5"x2.25"	1000 Nos.	13.72	147.73	136.36	145.45	8.33	1.56
2	Brick Jelly	20mm	cu.m	0.42	125.55	125.55	125.55	0.00	0.00
3	Pressed Tiles	9"x9"	1000 Nos.	2.29	155.56	155.56	140.74	0.00	10.53
4	Glazes tiles	9"x9"	1 No.	0.13	437.50	437.50	412.50	0.00	6.06
5	Ceramic tiles	9"x9"	1 No.	0.80	147.86	147.86	142.86	0.00	3.50
<b>2.Sand stone and other Quarry Products</b>									
6	Sand for mortar	River	cu.m	3.97	465.60	465.60	432.38	0.00	7.68
7	Stone Jelly (HBSJ)	40mm	cu.m	3.46	127.42	127.42	117.85	0.00	8.12
8	Stone Jelly (HBSJ)	20mm	cu.m	0.36	160.91	160.91	154.95	0.00	3.85
9	Stone Jelly Chips (HBSJ)	10mm	cu.m	1.09	135.83	135.83	124.83	0.00	8.81
10	Rough stone		cu.m	0.44	154.51	154.51	151.74	0.00	1.83
11	Bond stone		cu.m	0.57	174.10	174.10	170.85	0.00	1.90
<b>3.Cement and Lime</b>									
12	Cement		M.T	13.04	142.86	136.51	123.81	4.65	15.38
13	Lime stone		cu.m	0.12	109.05	109.05	102.92	0.00	5.95
<b>4.Timber and other wood</b>									
14	TW Frame		sq.m	1.41	300.00	300.00	300.00	0.00	0.00
15	TW Panel door shutter		sq.m	0.92	188.89	188.89	172.22	0.00	9.68
16	Solid PVC door shutter		sq.m	0.58	143.59	143.59	146.67	0.00	-2.10
<b>5.Iron and Steel</b>									
17	Mild Steel Rods	10mm	MT	1.30	180.95	147.62	105.95	22.58	70.79
18	Ribbed Tar Steel (RTS)	8mm	MT	2.12	176.74	147.67	105.81	19.69	67.03
19	Binding Wire		Kg	0.57	127.66	127.66	113.48	0.00	12.50
20	Door catch		No.	0.02	131.14	131.14	125.14	0.00	4.79
21	Hold fast		No.	0.12	230.77	230.77	178.46	0.00	29.31
22	Tower bolt receiver		No.	0.03	314.29	314.29	165.71	0.00	89.66
23	Steel window ventilator		Kg	1.24	191.30	191.30	163.48	0.00	17.02
<b>6.Ancillary Materials</b>									
25	Ready mix Prime paint		Ltr	0.11	150.00	150.00	142.50	0.00	5.26
26	Ready mix Synthetic Enamel paint		Ltr	0.06	150.94	150.94	128.30	0.00	17.65
27	Cement paint		Kg	1.84	125.00	125.00	113.64	0.00	10.00
28	Matt paint		Ltr	0.15	125.00	125.00	112.73	0.00	10.89
<b>7.Electrical Fittings</b>									
29	1.5sqmm copper cable		100 meter	0.36	220.52	220.52	220.52	0.00	0.00
30	PVC Pipe	20mm	1metre	0.15	600.00	550.00	512.50	9.09	17.07
31	PVC bend		No.	0.03	666.67	666.67	419.05	0.00	59.09
32	PVC tee		No.	0.02	285.71	285.71	285.71	0.00	0.00
33	5amps 5 pin at switch board itself		No.	0.01	110.00	110.00	110.00	0.00	0.00
34	5amps 5 pin non interlocking switch		No.	0.01	166.67	166.67	166.67	0.00	0.00
35	Ceiling Rose		No.	0.02	208.00	208.00	196.00	0.00	6.12
36	Bakelite pattern Holder		No.	0.02	125.00	130.00	150.00	-3.85	-16.67
37	Bulk Head Fittings		No.	0.02	170.00	160.00	180.00	6.25	-5.56
38	8 SWG GI wire		kg	0.06	140.66	118.93	112.53	18.28	25.00
39	32 amps 500V fuse unit		No.	0.01	376.47	400.00	376.47	-5.88	0.00
40	Junction box		No.	0.04	156.25	156.25	137.50	0.00	13.64
41	Jointbox		No.	0.02	122.86	121.43	100.00	1.18	22.86
42	Hvlem sheet		No.	0.01	129.93	129.93	129.93	0.00	0.00
43	Flush type switch		No.	0.05	166.67	166.67	126.67	0.00	31.58
44	11w CFL bulb	11w	No.	0.01	162.50	162.50	143.75	0.00	13.04
45	Calling bell		No.	0.01	111.11	111.11	111.11	0.00	0.00
46	25amps single phase ELCB		No.	0.24	100.95	100.95	169.40	0.00	-40.41
47	25mm GI pipe line	25mm	1 metre	0.05	155.32	155.32	155.32	0.00	0.00
48	GI Pipe 20mm(Earth pit)	20mm	1 metre	0.01	146.15	135.38	135.38	7.95	7.95
49	40mm dia GI pipe	40mm	1 metre	0.01	114.99	114.99	114.99	0.00	0.00
50	15mm GI Pipe	15mm	1 metre	0.01	115.23	115.23	115.23	0.00	0.00
51	GI reducers		No.	0.00	336.63	336.63	316.83	0.00	6.25
<b>8.Sanitary &amp; Water Supply</b>									
52	Indian Water Closet		No.	0.07	159.30	159.30	159.30	0.00	0.00
53	S.W.Gully Trap	6"x4"	No.	0.01	187.50	187.50	183.75	0.00	2.04
54	S.W.Bend	4"	No.	0.01	140.00	140.00	131.25	0.00	6.67
55	GI Pipe 20mm dia Hotwater line	20mm	1 metre	0.06	175.00	158.33	143.33	10.53	22.09
56	Stone ware pipe 100mm	100mm	1 metre	0.27	130.00	130.00	125.00	0.00	4.00
57	PVC 32mm dia	32mm	1 metre	0.14	135.60	135.60	120.88	0.00	12.18
58	PVC 20mm dia	20mm	1 metre	0.02	132.93	132.93	119.14	0.00	11.57
59	PVC rain water down fall 110mm	110mm	1 metre	0.23	261.03	261.03	233.08	0.00	11.99
60	HDPE Cylindrical		No.	0.50	292.31	292.31	292.31	0.00	0.00
<b>II.Labour cost</b>									
<b>1. Skilled Labour</b>									
61	Mason I & II (Brick Layer I & II Class )		No.	12.27	160.00	160.00	140.00	0.00	14.29
62	Carpenter		No.	1.35	164.10	164.10	143.59	0.00	14.29
63	Painter		No.	1.55	187.50	187.50	175.00	0.00	7.14
64	Fitter I & II		No.	0.78	200.00	200.00	175.00	0.00	14.29
65	Plumber		No.	0.12	200.00	200.00	175.00	0.00	14.29
66	Electrician Gr I & II		No.	0.52	172.31	184.62	172.31	-6.67	0.00
<b>2.Unskilled Labour</b>									
67	Mazdoor-men		No.	8.13	200.00	200.00	142.86	0.00	40.00
68	Mazdoor-Women		No.	7.88	232.80	232.80	169.31	0.00	37.50
70	Helper		No.	0.37	300.00	300.00	250.00	0.00	20.00
<b>III.Other expenses</b>									
71	Mixing Charges per mortar		cu.m	2.14	180.65	180.65	154.84	0.00	16.67
72	E.B.Connection charges		No.	0.42	178.15	178.15	153.64	0.00	15.95
73	Contingencies	2.5%		2.22	184.57	180.67	159.50	2.16	15.72
74	Supervision charges	10%		8.89	184.57	180.67	159.50	2.16	15.72
				100.00					14.98



**TABLE - 3  
BUILDING CONSTRUCTION COST INDEX**

**QUARTER : SEPTEMBER 2021  
(BASE YEAR:2011-12=100)**

**CENTRE : CUDDALORE**

Sl. No	ITEM	Weight	INDEX			% Variation	
			Current Quarter Sep 2021	Previous Quarter June 2021	Corresponding Qtr. of prev. year Sep 2020	Previous Quarter June 2021	Corresponding Qtr. of prev. year Sep 2020
<b>I</b>	<b><u>MATERIAL COST</u></b>						
1	BRICKS & TILES	17.36	150.45	141.47	146.28	6.35	2.85
2	SAND, STONE & OTHER QUARRY PRODUCTS	9.89	269.19	269.19	250.77	0.00	7.35
3	CEMENT & LIME	13.16	142.55	136.26	123.62	4.62	15.31
4	TIMBER & OTHER WOODS	2.90	233.76	233.76	229.11	0.00	2.03
5	IRON & STEEL	5.40	177.76	158.35	121.96	12.25	45.75
6	ANCILLIARY MATERIALS	2.16	126.95	126.95	115.41	0.00	10.00
7	ELECTRICAL FITTINGS	1.18	236.51	229.22	229.05	3.18	3.25
8	SANITARY WARE & WATER SUPPLY	1.30	220.04	219.33	210.85	0.32	4.36
<b>II</b>	<b><u>LABOUR COST</u></b>						
1	SKILLED LABOUR	16.58	165.45	165.84	146.47	-0.23	12.96
2	UNSKILLED LABOUR	16.39	218.06	218.06	158.02	0.00	37.99
<b>III</b>	<b><u>OTHER EXPENSES</u></b>						
1	MIXING CHARGES	2.14	180.65	180.65	154.84	0.00	16.67
2	E.B.SERVICE CONNECTION CHARGES	0.42	178.15	178.15	153.64	0.00	15.95
3	CONTINGENCIES	2.22	184.57	180.67	159.50	2.16	15.72
4	SUPERVISION CHARGES	8.89	184.57	180.67	159.50	2.16	15.72
<b>I</b>	<b><i>MATERIAL COST</i></b>	<b>53.36</b>	<b>180.43</b>	<b>173.83</b>	<b>167.23</b>	3.80	7.89
<b>II</b>	<b><i>LABOUR COST</i></b>	<b>32.97</b>	<b>191.60</b>	<b>191.79</b>	<b>152.21</b>	-0.10	25.88
<b>III</b>	<b><i>OTHER EXPENSES</i></b>	<b>13.67</b>	<b>183.76</b>	<b>180.59</b>	<b>158.59</b>	1.76	15.87
	<b>BUILDING CONSTRUCTION COST INDEX</b>	<b>100</b>	<b>184.57</b>	<b>180.67</b>	<b>159.50</b>	2.16	15.72

**TABLE - 4A**  
**BUILDING CONSTRUCTION COST INDEX**  
**Item-wise Cost relative**

Quarter : September 2021  
(Base year:2011-12=100)

Centre : Vellore

Sl. No.	Item	Specification	Unit	Weight	COST RELATIVE			% Variation	
					Current Quarter Sep 2021	Previous Quarter June 2021	Corresponding Qtr. of prev. year Sep 2020	Previous Quarter June 2021	Corresponding Qtr. of prev. year Sep 2020
<b>I. Material cost</b>									
<b>1.Bricks and Tiles Products</b>									
1	Bricks	9"x4.5"x2.25"	1000 Nos.	17.17	144.68	144.68	136.17	0.00	6.25
2	Brick Jelly	20mm	cu.m	0.78	128.49	128.49	128.45	0.00	0.03
3	Pressed Tiles	9"x9"	1000 Nos.	1.69	235.29	235.29	223.53	0.00	5.26
4	Glazes tiles	9"x9"	1 No.	0.16	238.10	238.10	214.29	0.00	11.11
5	Ceramic tiles	9"x9"	1 No.	0.94	241.43	242.86	228.57	-0.59	5.62
<b>2.Sand stone and other Quarry Products</b>									
6	Sand for mortar	River	cu.m	4.80	410.49	410.49	354.58	0.00	15.77
7	Stone Jelly (HBSJ)	40mm	cu.m	4.06	184.69	184.69	122.36	0.00	50.94
8	Stone Jelly (HBSJ)	20mm	cu.m	0.42	143.07	143.07	117.96	0.00	21.29
9	Stone Jelly Chips (HBSJ)	10mm	cu.m	1.28	207.92	207.92	150.09	0.00	38.54
10	Rough stone		cu.m	0.38	211.90	211.90	208.10	0.00	1.83
11	Bond stone		cu.m	0.65	178.33	178.33	175.00	0.00	1.90
<b>3.Cement and Lime</b>									
12	Cement		M.T	14.50	153.97	138.91	130.54	10.84	17.95
13	Lime stone		cu.m	0.17	197.06	197.06	152.94	0.00	28.85
<b>4.Timber and other wood</b>									
14	TW Frame		sq.m	1.30	158.73	158.73	154.23	0.00	2.92
15	TW Panel door shutter		sq.m	1.07	177.78	177.78	201.67	0.00	-11.85
16	Solid PVC door shutter		sq.m	0.45	127.55	127.55	112.24	0.00	13.64
<b>5.Iron and Steel</b>									
17	Mild Steel Rods	10mm	MT	1.59	140.91	136.36	111.25	3.33	26.66
18	Ribbed Tar Steel (RTS)	8mm	MT	2.51	159.08	145.24	142.94	9.52	11.29
19	Binding Wire		Kg	0.59	136.00	136.00	128.00	0.00	6.25
20	Door catch		No.	0.03	131.43	131.43	125.14	0.00	5.02
21	Hold fast		No.	0.04	200.00	200.00	181.25	0.00	10.34
22	Tower bolt receiver		No.	0.02	388.89	388.89	388.89	0.00	0.00
23	Steel window ventilator		Kg	1.45	200.00	200.00	170.43	0.00	17.35
<b>6.Ancillary Materials</b>									
25	Ready mix Prime paint		Ltr	0.09	190.00	190.00	186.67	0.00	1.79
26	Ready mix Synthetic Enamel paint		Ltr	0.06	200.00	200.00	190.91	0.00	4.76
27	Cement paint		Kg	2.16	136.36	136.36	125.00	0.00	9.09
28	Matt paint		Ltr	0.11	185.71	185.71	139.29	0.00	33.33
<b>7.Electrical Fittings</b>									
29	1.5sqmm copper cable		100 meter	0.28	283.64	283.64	283.64	0.00	0.00
30	PVC Pipe	20mm	1metre	0.12	642.86	642.86	523.81	0.00	22.73
31	PVC bend		No.	0.04	416.67	416.67	366.67	0.00	13.64
32	PVC tee		No.	0.02	444.44	444.44	349.21	0.00	27.27
33	5amps 5 pin at switch board itself		No.	0.00	138.46	138.46	138.46	0.00	0.00
34	5amps 5 pin non interlocking switch		No.	0.01	208.33	208.33	166.67	0.00	25.00
35	Ceiling Rose		No.	0.01	210.00	210.00	200.00	0.00	5.00
36	Bakelite pattern Holder		No.	0.03	200.00	200.00	166.67	0.00	20.00
37	Bulk Head Fittings		No.	0.01	360.00	360.00	360.00	0.00	0.00
38	8 SWG GI wire		kg	0.04	203.15	190.45	165.06	6.67	23.08
39	32 amps 500V fuse unit		No.	0.01	457.14	457.14	238.86	0.00	91.39
40	Junction box		No.	0.04	333.33	333.33	146.67	0.00	127.27
41	Jointbox		No.	0.02	255.32	255.32	255.32	0.00	0.00
42	Hylem sheet		No.	0.02	130.63	130.63	130.63	0.00	0.00
43	Flush type switch		No.	0.05	133.33	133.33	120.00	0.00	11.11
44	11wCFL bulb	11w	No.	0.01	150.00	150.00	150.00	0.00	0.00
45	Calling bell		No.	0.01	344.44	344.44	344.44	0.00	0.00
46	25amps single phase ELCB		No.	0.29	124.92	124.92	169.40	0.00	-26.26
47	25mm GI pipe line	25mm	1 metre	0.06	181.82	181.82	181.82	0.00	0.00
48	GI Pipe 20mm(Earth pit)	20mm	1 metre	0.01	276.92	276.92	227.69	0.00	21.62
49	40mm dia GI pipe	40mm	1 metre	0.01	235.71	235.71	116.43	0.00	102.45
50	15mm GI Pipe	15mm	1 metre	0.01	216.67	216.67	216.67	0.00	0.00
51	GI reducers		No.	0.01	115.43	115.43	114.29	0.00	1.00
<b>8.Sanitary &amp; Water Supply</b>									
52	Indian Water Closet		No.	0.07	243.24	243.24	229.73	0.00	5.88
53	S.W.Gully Trap	6"x4"	No.	0.01	433.33	400.00	333.33	8.33	30.00
54	S.W.Bend	4"	No.	0.01	355.56	355.56	355.56	0.00	0.00
55	GI Pipe 20mm dia Hotwater line	20mm	1 metre	0.07	273.33	273.33	246.67	0.00	10.81
56	Stone ware pipe 100mm	100mm	1 metre	0.16	350.00	350.00	335.00	0.00	4.48
57	PVC 32mm dia	32mm	1 metre	0.17	266.67	266.67	122.22	0.00	118.18
58	PVC 20mm dia	20mm	1 metre	0.02	333.33	333.33	120.00	0.00	177.78
59	PVC rain water down fall 110mm	110mm	1 metre	0.23	200.00	200.00	181.89	0.00	9.95
60	HDPE Cylindrical		No.	0.59	184.62	184.62	172.31	0.00	7.14
<b>II.Labour cost</b>									
<b>1. Skilled Labour</b>									
61	Mason I & II (Brick Layer I & II Class )		No.	8.62	233.33	233.33	233.33	0.00	0.00
62	Carpenter		No.	0.97	233.33	233.33	233.33	0.00	0.00
63	Painter		No.	1.13	280.00	280.00	280.00	0.00	0.00
64	Fitter I & II		No.	0.57	280.00	280.00	280.00	0.00	0.00
65	Plumber		No.	0.09	280.00	280.00	280.00	0.00	0.00
66	Electrician Gr I & II		No.	0.38	280.00	280.00	280.00	0.00	0.00
<b>2.Unskilled Labour</b>									
67	Mazdoor-men		No.	7.15	198.10	198.10	190.48	0.00	4.00
68	Mazdoor-Women		No.	6.65	241.18	241.18	235.29	0.00	2.50
70	Helper		No.	0.24	446.43	446.43	446.43	0.00	0.00
<b>III.Other expenses</b>									
71	Mixing Charges per mortar		cu.m	1.58	315.08	315.08	315.08	0.00	0.00
72	E.B.Connection charges		No.	0.61	272.01	264.60	259.24	2.80	4.93
73	Contingencies	2.5%		2.22	200.31	197.33	183.88	1.51	8.94
74	Supervision charges	10%		8.89	200.31	197.33	183.88	1.51	8.94
				100.00					7.19

**TABLE - 4**  
**BUILDING CONSTRUCTION COST INDEX**

QUARTER : SEPTEMBER 2021

CENTRE : VELLORE

(BASE YEAR:2011-12=100)

Sl. No	ITEM	Weight	INDEX			% Variation	
			Current Quarter Sep 2021	Previous Quarter June 2021	Corresponding Qtr. of prev. year Sep 2020	Previous Quarter June 2021	Corresponding Qtr. of prev. year Sep 2020
<b>I</b>	<b><u>MATERIAL COST</u></b>						
1	BRICKS & TILES	20.75	156.57	156.64	147.80	-0.04	5.94
2	SAND, STONE & OTHER QUARRY PRODUCTS	11.58	279.84	279.84	227.24	0.00	23.15
3	CEMENT & LIME	14.67	154.47	139.58	130.80	10.67	18.10
4	TIMBER & OTHER WOODS	2.82	160.96	160.96	165.52	0.00	-2.75
5	IRON & STEEL	6.23	162.69	155.96	140.81	4.31	15.53
6	ANCILLIARY MATERIALS	2.42	142.26	142.26	117.48	0.00	21.09
7	ELECTRICAL FITTINGS	1.11	267.50	268.82	248.99	-0.49	7.43
8	SANITARY WARE & WATER SUPPLY	1.31	230.26	229.98	195.38	0.12	17.85
<b>II</b>	<b><u>LABOUR COST</u></b>						
1	SKILLED LABOUR	11.76	241.93	241.93	241.93	0.00	0.00
2	UNSKILLED LABOUR	14.04	222.82	222.82	216.16	0.00	3.08
<b>III</b>	<b><u>OTHER EXPENSES</u></b>						
1	MIXING CHARGES	1.58	315.08	315.08	315.08	0.00	0.00
2	E.B.SERVICE CONNECTION CHARGES	0.61	272.01	264.60	259.24	2.80	4.93
3	CONTINGENCIES	2.22	200.31	197.35	183.88	1.50	8.94
4	SUPERVISION CHARGES	8.89	200.31	197.35	183.88	1.50	8.94
<b>I</b>	<b><i>MATERIAL COST</i></b>	<b>60.90</b>	<b>183.38</b>	<b>179.11</b>	<b>161.07</b>	2.38	13.85
<b>II</b>	<b><i>LABOUR COST</i></b>	<b>25.80</b>	<b>231.53</b>	<b>231.53</b>	<b>227.91</b>	0.00	1.59
<b>III</b>	<b><i>OTHER EXPENSES</i></b>	<b>13.30</b>	<b>217.23</b>	<b>214.41</b>	<b>202.93</b>	1.32	7.05
	<b>BUILDING CONSTRUCTION COST INDEX</b>	<b>100</b>	<b>200.31</b>	<b>197.33</b>	<b>183.88</b>	1.51	8.94

**TABLE - 5A**  
**BUILDING CONSTRUCTION COST INDEX**

Item-wise Cost relative

Quarter : September 2021  
(Base year:2011-12=100)

Centre : Salem

Sl. No.	Item	Specification	Unit	Weight	COST RELATIVE			% Variation	
					Current Quarter Sep 2021	Previous Quarter June 2021	Corresponding Qtr. of prev. year Sep 2020	Previous Quarter June 2021	Corresponding Qtr. of prev. year Sep 2020
<b>I. Material cost</b>									
<b>1.Bricks and Tiles Products</b>									
1	Bricks	9"x4.5"x2.25"	1000 Nos.	16.39	164.38	164.38	153.42	0.00	7.14
2	Brick Jelly	20mm	cu.m	0.48	151.59	151.59	151.59	0.00	0.00
3	Pressed Tiles	9"x9"	1000 Nos.	1.42	220.69	220.69	200.00	0.00	10.34
4	Glazes tiles	9"x9"	1 No.	0.15	300.00	300.00	275.00	0.00	9.09
5	Ceramic tiles	9"x9"	1 No.	0.54	343.56	343.56	319.02	0.00	7.69
<b>2.Sand stone and other Quarry Products</b>									
6	Sand for mortar	River	cu.m	4.75	480.18	480.18	480.18	0.00	0.00
7	Stone Jelly (HBSJ)	40mm	cu.m	3.33	146.65	140.60	134.37	4.31	9.14
8	Stone Jelly (HBSJ)	20mm	cu.m	0.37	116.03	116.03	116.03	0.00	0.00
9	Stone Jelly Chips (HBSJ)	10mm	cu.m	1.80	114.83	114.83	109.75	0.00	4.63
10	Rough stone		cu.m	0.49	236.36	236.36	218.18	0.00	8.33
11	Bond stone		cu.m	0.67	398.67	398.67	372.09	0.00	7.14
<b>3.Cement and Lime</b>									
12	Cement		M.T	14.31	143.33	146.67	133.33	-2.27	7.50
13	Lime stone		cu.m	0.17	117.65	117.65	117.65	0.00	0.00
<b>4.Timber and other wood</b>									
14	TW Frame		sq.m	1.38	156.25	146.48	139.16	6.67	12.28
15	TW Panel door shutter		sq.m	0.92	130.79	116.83	116.83	11.96	11.96
16	Solid PVC door shutter		sq.m	0.39	106.98	106.98	109.88	0.00	-2.65
<b>5.Iron and Steel</b>									
17	Mild Steel Rods	10mm	MT	1.71	134.85	128.63	102.70	4.84	31.31
18	Ribbed Tar Steel (RTS)	8mm	MT	2.77	136.81	129.31	104.68	5.79	30.69
19	Binding Wire		Kq	0.54	226.09	226.09	139.13	0.00	62.50
20	Door catch		No.	0.02	203.13	203.13	181.25	0.00	12.07
21	Hold fast		No.	0.07	238.10	238.10	215.87	0.00	10.29
22	Tower bolt receiver		No.	0.03	166.67	153.33	150.00	8.70	11.11
23	Steel window ventilator		Kq	1.43	135.65	135.65	121.74	0.00	11.43
<b>6.Ancillary Materials</b>									
25	Ready mix Prime paint		Ltr	0.13	123.81	119.05	119.05	4.00	4.00
26	Ready mix Synthetic Enamel paint		Ltr	0.06	145.83	150.00	150.00	-2.78	-2.78
27	Cement paint		Kq	2.17	122.22	122.22	111.11	0.00	10.00
28	Matt paint		Ltr	0.11	140.35	140.35	136.84	0.00	2.56
<b>7.Electrical Fittings</b>									
29	1.5samm copper cable		100 meter	0.49	153.85	153.85	153.85	0.00	0.00
30	PVC Pipe	20mm	1metre	0.12	296.10	296.10	284.13	0.00	4.21
31	PVC bend		No.	0.04	253.97	253.97	253.97	0.00	0.00
32	PVC tee		No.	0.02	357.14	357.14	328.57	0.00	8.70
33	5amps 5 pin at switch board itself		No.	0.01	114.29	114.29	114.29	0.00	0.00
34	5amps 5 pin non interlocking switch		No.	0.01	190.00	190.00	160.00	0.00	18.75
35	Ceiling Rose		No.	0.02	226.67	226.67	200.00	0.00	13.33
36	Bakelite pattern Holder		No.	0.02	222.86	222.86	182.86	0.00	21.88
37	Bulk Head Fittings		No.	0.01	270.97	238.71	200.00	13.51	35.48
38	8 SWG GI wire		kq	0.04	179.78	179.78	179.78	0.00	0.00
39	32 amps 500V fuse unit		No.	0.02	361.52	361.52	349.85	0.00	3.33
40	Junction box		No.	0.04	120.00	120.00	106.67	0.00	12.50
41	Jointbox		No.	0.02	122.35	122.35	122.35	0.00	0.00
42	Hylem sheet		No.	0.02	139.21	139.21	128.77	0.00	8.11
43	Flush type switch		No.	0.05	142.86	142.86	135.71	0.00	5.26
44	11w CFL bulb	11w	No.	0.01	95.41	95.41	92.35	0.00	3.31
45	Calling bell		No.	0.01	480.87	480.87	467.76	0.00	2.80
46	25amps single phase ELCB		No.	0.28	115.77	113.56	113.56	1.94	1.94
47	25mm GI pipe line	25mm	1 metre	0.06	350.00	350.00	340.91	0.00	2.67
48	GI Pipe 20mm(Earth pit)	20mm	1 metre	0.02	189.33	195.56	160.00	-3.18	18.33
49	40mm dia GI pipe	40mm	1 metre	0.01	325.93	325.93	320.99	0.00	1.54
50	15mm GI Pipe	15mm	1 metre	0.01	350.62	350.62	342.39	0.00	2.40
51	GI reducers		No.	0.00	178.57	178.57	157.14	0.00	13.64
<b>8.Sanitary &amp; Water Supply</b>									
52	Indian Water Closet		No.	0.07	131.58	131.58	131.58	0.00	0.00
53	S.W.Gully Trap	6"x4"	No.	0.02	217.78	217.78	195.56	0.00	11.36
54	S.W.Bend	4"	No.	0.01	408.45	408.45	246.48	0.00	65.71
55	GI Pipe 20mm dia Hotwater line	20mm	1 metre	0.10	230.27	227.03	169.73	1.43	35.67
56	Stone ware pipe 100mm	100mm	1 metre	0.19	410.26	410.26	246.15	0.00	66.67
57	PVC 32mm dia	32mm	1 metre	0.17	252.75	252.75	248.35	0.00	1.77
58	PVC 20mm dia	20mm	1 metre	0.02	314.40	314.40	297.85	0.00	5.56
59	PVC rain water down fall 110mm	110mm	1 metre	0.33	256.43	256.43	246.43	0.00	4.06
60	HDPE Cylindrical		No.	0.58	138.46	138.46	132.31	0.00	4.65
<b>II.Labour cost</b>									
<b>1. Skilled Labour</b>									
61	Mason I & II (Brick Layer I & II Class )		No.	10.42	244.23	230.66	189.96	5.88	28.57
62	Carpenter		No.	1.09	233.58	233.58	189.78	0.00	23.08
63	Painter		No.	1.36	229.51	229.51	196.72	0.00	16.67
64	Fitter I & II		No.	0.68	262.30	262.30	196.72	0.00	33.33
65	Plumber		No.	0.11	262.30	262.30	196.72	0.00	33.33
66	Electrician Gr I & II		No.	0.43	254.67	254.67	203.74	0.00	25.00
<b>2.Unskilled Labour</b>									
67	Mazdoor-men		No.	6.02	400.00	377.78	244.44	5.88	63.64
68	Mazdoor-Women		No.	7.45	232.26	206.45	206.45	12.50	12.50
70	Helper		No.	0.31	307.69	273.50	273.50	12.50	12.50
<b>III.Other expenses</b>									
71	Mixing Charges per mortar		cu.m	0.61	200.00	200.00	200.00	0.00	0.00
72	E.B.Connection charges		No.	0.97	143.26	140.66	136.96	1.85	4.61
73	Contingencies	2.5%		2.22	212.88	207.11	183.04	2.79	16.30
74	Supervision charges	10%		8.89	212.88	207.11	183.04	2.79	16.30
				100.00					7.89

**TABLE - 5**  
**BUILDING CONSTRUCTION COST INDEX**

QUARTER : SEPTEMBER 2021  
(BASE YEAR:2011-12=100)

CENTRE : SALEM

Sl. No	ITEM	Weight	INDEX			% Variation	
			Current Quarter Sep 2021	Previous Quarter June 2021	Corresponding Qtr. of prev. year Sep 2020	Previous Quarter June 2021	Corresponding Qtr. of prev. year Sep 2020
<b>I</b>	<b><u>MATERIAL COST</u></b>						
1	BRICKS & TILES	18.93	174.45	174.45	162.54	0.00	7.33
2	SAND, STONE & OTHER QUARRY PRODUCTS	11.60	298.16	296.40	291.44	0.60	2.31
3	CEMENT & LIME	14.45	143.04	146.33	133.15	-2.25	7.42
4	TIMBER & OTHER WOODS	2.69	140.39	130.60	127.27	7.49	10.31
5	IRON & STEEL	6.55	144.75	139.90	112.31	3.46	28.88
6	ANCILLIARY MATERIALS	2.47	123.72	123.58	113.68	0.11	8.83
7	ELECTRICAL FITTINGS	1.34	184.17	183.46	178.04	0.38	3.44
8	SANITARY WARE & WATER SUPPL	1.48	223.60	223.39	191.74	0.10	16.62
<b>II</b>	<b><u>LABOUR COST</u></b>						
1	SKILLED LABOUR	14.06	243.32	233.29	191.40	4.30	27.13
2	UNSKILLED LABOUR	13.75	307.26	282.83	224.58	8.64	36.82
<b>III</b>	<b><u>OTHER EXPENSES</u></b>						
1	MIXING CHARGES	0.60	200.00	200.00	200.00	0.00	0.00
2	E.B.SERVICE CONNECTION CHAR	0.97	143.26	140.66	136.96	1.85	4.61
3	CONTINGENCIES	2.22	212.88	207.11	183.04	2.79	16.30
4	SUPERVISION CHARGES	8.89	212.88	207.11	183.04	2.79	16.30
<b>I</b>	<b><i>MATERIAL COST</i></b>	<b>59.50</b>	<b>185.04</b>	<b>184.50</b>	<b>172.01</b>	0.29	7.58
<b>II</b>	<b><i>LABOUR COST</i></b>	<b>27.81</b>	<b>274.94</b>	<b>257.79</b>	<b>207.81</b>	6.65	32.31
<b>III</b>	<b><i>OTHER EXPENSES</i></b>	<b>12.69</b>	<b>206.92</b>	<b>201.67</b>	<b>180.31</b>	2.60	14.76
	<b>BUILDING CONSTRUCTION COST INDEX</b>	<b>100</b>	<b>212.88</b>	<b>207.11</b>	<b>183.04</b>	2.79	<b>-11.62</b>

**TABLE - 6A**  
**BUILDING CONSTRUCTION COST INDEX**

Item-wise Cost relative

Quarter : September 2021  
(Base year:2011-12=100)

Centre : Dharmapuri

Sl. No.	Item	Specification	Unit	Weight	COST RELATIVE			% Variation	
					Current Quarter Sep 2021	Previous Quarter June 2021	Corresponding Qtr. of prev. Sep 2020	Previous Quarter June 2021	Corresponding Qtr. of prev. year Sep 2020
<b>I. Material cost</b>									
<b>1.Bricks and Tiles Products</b>									
1	Bricks	9"x4.5"x2.25"	1000 Nos	15.86	177.02	164.38	151.74	7.69	16.67
2	Brick Jelly	20mm	cu.m	0.54	238.99	238.99	238.99	0.00	0.00
3	Pressed Tiles	9"x9"	1000 Nos	1.82	168.17	168.17	159.76	0.00	5.26
4	Glazes tiles	9"x9"	1 No.	0.51	175.00	175.00	158.33	0.00	10.53
5	Ceramic tiles	9"x9"	1 No.	0.60	441.72	441.72	368.10	0.00	20.00
<b>2.Sand stone and other Quarry Products</b>									
6	Sand for mortar	River	cu.m	3.83	665.41	665.41	554.55	0.00	19.99
7	Stone Jelly (HBSJ)	40mm	cu.m	2.84	223.50	223.50	215.59	0.00	3.67
8	Stone Jelly (HBSJ)	20mm	cu.m	0.42	148.47	148.47	162.40	0.00	-8.58
9	Stone Jelly Chips (HBSJ)	10mm	cu.m	2.00	159.60	149.72	149.72	6.60	6.60
10	Rough stone		cu.m	0.57	295.14	295.14	151.74	0.00	94.51
11	Bond stone		cu.m	1.59	187.50	187.50	157.50	0.00	19.05
<b>3.Cement and Lime</b>									
12	Cement		M.T	15.11	169.16	153.30	148.02	10.34	14.29
13	Lime stone		cu.m	0.19	139.29	139.29	131.37	0.00	6.03
<b>4.Timber and other wood</b>									
14	TW Frame		sq.m	1.99	151.52	151.52	139.46	0.00	8.65
15	TW Panel door shutter		sq.m	1.03	152.38	152.38	152.38	0.00	0.00
16	Solid PVC door shutter		sq.m	0.57	123.62	123.62	123.62	0.00	0.00
<b>5.Iron and Steel</b>									
17	Mild Steel Rods	10mm	MT	1.54	126.05	126.05	123.47	0.00	2.08
18	Ribbed Tar Steel (RTS)	8mm	MT	2.64	120.05	120.05	117.65	0.00	2.04
19	Binding Wire		Kq	0.58	179.37	161.43	152.47	11.11	17.65
20	Door catch		No.	0.03	325.00	325.00	290.00	0.00	12.07
21	Hold fast		No.	0.08	265.63	265.63	218.75	0.00	21.43
22	Tower bolt receiver		No.	0.06	117.65	117.65	106.95	0.00	10.00
23	Steel window ventilator		Kq	1.60	173.91	173.91	166.96	0.00	4.17
<b>6.Ancillary Materials</b>									
25	Ready mix Prime paint		Ltr	0.14	138.10	138.10	138.10	0.00	0.00
26	Ready mix Synthetic Enamel paint		Ltr	0.07	150.00	150.00	150.00	0.00	0.00
27	Cement paint		Kq	2.48	119.57	119.57	119.57	0.00	0.00
28	Matt paint		Ltr	0.13	132.65	132.65	132.65	0.00	0.00
<b>7.Electrical Fittings</b>									
29	1.5sqmm copper cable		100 metre	0.59	161.14	161.14	161.14	0.00	0.00
30	PVC Pipe	20mm	1metre	0.19	700.00	700.00	460.00	0.00	52.17
31	PVC bend		No.	0.05	253.97	253.97	253.97	0.00	0.00
32	PVC tee		No.	0.03	326.53	326.53	99.32	0.00	228.77
33	5amps 5 pin at switch board itself		No.	0.01	115.38	115.38	115.38	0.00	0.00
34	5amps 5 pin non interlocking switch		No.	0.01	325.00	325.00	200.00	0.00	62.50
35	Ceiling Rose		No.	0.03	187.50	150.00	135.42	25.00	38.46
36	Bakelite pattern Holder		No.	0.03	164.38	164.38	164.38	0.00	0.00
37	Bulk Head Fittings		No.	0.02	147.37	147.37	147.37	0.00	0.00
38	8 SWG GI wire		kq	0.04	149.75	149.75	149.75	0.00	0.00
39	32 amps 500V fuse unit		No.	0.01	266.67	266.67	139.33	0.00	91.39
40	Junction box		No.	0.05	106.67	106.67	106.67	0.00	0.00
41	Jointbox		No.	0.02	144.44	144.44	144.44	0.00	0.00
42	Hvlem sheet		No.	0.02	146.17	146.17	130.63	0.00	11.90
43	Flush type switch		No.	0.06	200.00	200.00	164.29	0.00	21.74
44	11wCFL bulb	11w	No.	0.01	200.00	200.00	126.00	0.00	58.73
45	Calling bell		No.	0.01	291.67	291.67	291.67	0.00	0.00
46	25amps single phase ELCB		No.	0.31	110.41	110.41	110.41	0.00	0.00
47	25mm GI pipe line	25mm	1 metre	0.07	160.87	160.87	160.87	0.00	0.00
48	GI Pipe 20mm(Earth pit)	20mm	1 metre	0.01	305.56	305.56	159.72	0.00	91.30
49	40mm dia GI pipe	40mm	1 metre	0.01	192.52	192.52	110.88	0.00	73.62
50	15mm GI Pipe	15mm	1 metre	0.01	190.48	190.48	190.48	0.00	0.00
51	GI reducers		No.	0.00	218.38	218.38	216.22	0.00	1.00
<b>8.Sanitary &amp; Water Supply</b>									
52	Indian Water Closet		No.	0.08	200.00	200.00	170.00	0.00	17.65
53	S.W.Gully Trap	6"x4"	No.	0.01	213.33	213.33	213.33	0.00	0.00
54	S.W.Bend	4"	No.	0.02	129.41	129.41	129.41	0.00	0.00
55	GI Pipe 20mm dia Hotwater line	20mm	1 metre	0.12	220.00	220.00	120.00	0.00	83.33
56	Stone ware pipe 100mm	100mm	1 metre	0.30	138.18	138.18	138.18	0.00	0.00
57	PVC 32mm dia	32mm	1 metre	0.19	223.40	223.40	117.02	0.00	90.91
58	PVC 20mm dia	20mm	1 metre	0.03	232.14	136.90	135.71	69.57	71.05
59	PVC rain water down fall 110mm	110mm	1 metre	0.39	197.28	197.28	117.55	0.00	67.82
60	HDPE Cylindrical		No.	0.64	295.38	264.62	264.62	11.63	11.63
<b>II.Labour cost</b>									
<b>1. Skilled Labour</b>									
61	Mason I & II (Brick Layer I & II Class )		No.	9.86	224.00	224.00	224.00	0.00	0.00
62	Carpenter		No.	1.01	228.07	228.07	228.07	0.00	0.00
63	Painter		No.	1.17	255.32	255.32	255.32	0.00	0.00
64	Fitter I & II		No.	0.58	237.84	237.84	237.84	0.00	0.00
65	Plumber		No.	0.10	195.12	195.12	195.12	0.00	0.00
66	Electrician Gr I & II		No.	0.47	175.44	175.44	175.44	0.00	0.00
<b>2.Unskilled Labour</b>									
67	Mazdoor-men		No.	6.95	215.05	215.05	193.55	0.00	11.11
68	Mazdoor-Women		No.	4.99	301.08	301.08	258.06	0.00	16.67
70	Helper		No.	0.36	264.90	264.90	264.90	0.00	0.00
<b>III.Other expenses</b>									
71	Mixing Charges per mortar		cu.m	0.64	200.00	200.00	200.00	0.00	0.00
72	E.B.Connection charges		No.	0.58	223.23	223.23	194.98	0.00	14.49
73	Contingencies	2.5%		2.22	214.88	209.32	192.98	2.66	11.35
74	Supervision charges	10%		8.89	214.88	209.32	192.98	2.66	11.35
				100.00					43.13

**TABLE - 6**  
**BUILDING CONSTRUCTION COST INDEX**

QUARTER : SEPTEMBER 2021

CENTRE : DHARMAPURI

(BASE YEAR:2011-12=100)

Sl. No	ITEM	Weight	INDEX			% Variation	
			Current Quarter Sep 2021	Previous Quarter June 2021	Corresponding Qtr. of prev. year Sep 2020	Previous Quarter June 2021	Corresponding Qtr. of prev. year Sep 2020
<b>I</b>	<b><u>MATERIAL COST</u></b>						
1	BRICKS & TILES	19.49	186.11	175.73	161.84	5.90	15.00
2	SAND, STONE & OTHER QUARRY PRODUCTS	11.17	358.21	356.45	305.75	0.49	17.16
3	CEMENT & LIME	12.41	168.80	153.13	147.82	10.23	14.20
4	TIMBER & OTHER WOODS	2.61	147.30	147.30	140.63	0.00	4.74
5	IRON & STEEL	5.31	142.60	141.00	136.11	1.13	4.76
6	ANCILLIARY MATERIALS	2.14	121.87	121.87	121.87	0.00	0.00
7	ELECTRICAL FITTINGS	1.17	224.57	223.97	185.77	0.27	20.88
8	SANITARY WARE & WATER SUPPLY	1.23	227.53	214.63	177.82	6.01	27.95
<b>II</b>	<b><u>LABOUR COST</u></b>						
1	SKILLED LABOUR	14.72	225.75	225.75	225.75	0.00	0.00
2	UNSKILLED LABOUR	17.56	251.42	251.42	221.82	0.00	13.34
<b>III</b>	<b><u>OTHER EXPENSES</u></b>						
1	MIXING CHARGES	0.53	200.00	200.00	200.00	0.00	0.00
2	E.B.SERVICE CONNECTION CHARGES	0.55	223.23	223.23	194.98	0.00	14.49
3	CONTINGENCIES	2.22	214.88	209.32	192.64	2.66	11.54
4	SUPERVISION CHARGES	8.89	214.88	209.32	192.64	2.66	11.54
<b>I</b>	<b><i>MATERIAL COST</i></b>	<b>55.54</b>	<b>205.43</b>	<b>197.48</b>	<b>179.75</b>	4.03	14.29
<b>II</b>	<b><i>LABOUR COST</i></b>	<b>32.27</b>	<b>238.13</b>	<b>238.13</b>	<b>223.85</b>	0.00	6.38
<b>III</b>	<b><i>OTHER EXPENSES</i></b>	<b>12.19</b>	<b>214.51</b>	<b>209.50</b>	<b>193.14</b>	2.39	11.06
	<b>BUILDING CONSTRUCTION COST INDEX</b>	<b>100</b>	<b>214.88</b>	<b>209.32</b>	<b>192.64</b>	2.66	11.54

**TABLE - 7A**  
**BUILDING CONSTRUCTION COST INDEX**

Item-wise Cost relative

Quarter : September 2021  
(Base year:2011-12=100)

Centre : Coimbatore

Sl. No.	Item	Specification	Unit	Weight	COST RELATIVE			% Variation	
					Current Quarter Sep 2021	Previous Quarter June 2021	Corresponding Qtr. of prev. year Sep 2020	Previous Quarter June 2021	Corresponding Qtr. of prev. year Sep 2020
<b>I. Material cost</b>									
<b>1.Bricks and Tiles Products</b>									
1	Bricks	9"x4.5"x2	1000 Nos.	16.30	163.64	163.64	145.45	0.00	12.50
2	Brick Jelly	20mm	cu.m	0.57	137.50	125.00	125.00	10.00	10.00
3	Pressed Tiles	9"x9"	1000 Nos.	1.37	176.47	176.47	176.47	0.00	0.00
4	Glazes tiles	9"x9"	1 No.	0.38	187.50	187.50	166.67	0.00	12.50
5	Ceramic tiles	9"x9"	1 No.	0.87	312.50	312.50	281.25	0.00	11.11
<b>2.Sand stone and other Quarry Products</b>									
6	Sand for mortar	River	cu.m	4.64	324.34	324.34	405.62	0.00	-20.04
7	Stone Jelly (HBSJ)	40mm	cu.m	3.60	174.38	174.42	139.61	-0.02	24.91
8	Stone Jelly (HBSJ)	20mm	cu.m	0.32	166.63	166.67	140.00	-0.02	19.02
9	Stone Jelly Chips (HBSJ)	10mm	cu.m	1.63	169.45	169.49	142.37	-0.02	19.02
10	Rough stone		cu.m	0.42	171.53	171.53	151.74	0.00	13.04
11	Bond stone		cu.m	0.55	150.27	150.27	139.63	0.00	7.62
<b>3.Cement and Lime</b>									
12	Cement		M.T	12.26	150.88	147.67	134.83	2.17	11.90
13	Lime stone		cu.m	0.15	111.06	111.11	103.70	-0.04	7.10
<b>4.Timber and other wood</b>									
14	TW Frame		sq.m	1.29	250.00	250.00	198.28	0.00	26.09
15	TW Panel door shutter		sq.m	0.86	250.84	250.84	231.24	0.00	8.47
16	Solid PVC door shutter		sq.m	0.45	145.83	145.83	133.33	0.00	9.38
<b>5.Iron and Steel</b>									
17	Mild Steel Rods	10mm	MT	1.35	140.87	140.22	104.35	0.47	35.00
18	Ribbed Tar Steel (RTS)	8mm	MT	2.20	140.00	139.36	104.26	0.46	34.29
19	Binding Wire		Kg	0.46	119.33	127.73	117.65	-6.58	1.43
20	Door catch		No.	0.02	225.00	225.00	212.50	0.00	5.88
21	Hold fast		No.	0.06	281.25	281.25	271.88	0.00	3.45
22	Tower bolt receiver		No.	0.04	313.73	215.69	213.73	45.45	46.79
23	Steel window ventilator		Kq	1.18	208.70	208.70	191.30	0.00	9.09
<b>6.Ancillary Materials</b>									
25	Ready mix Prime paint		Ltr	0.10	118.54	120.00	118.54	-1.22	0.00
26	Ready mix Synthetic Enamel paint		Ltr	0.05	149.19	157.26	154.84	-5.13	-3.65
27	Cement paint		Kq	1.83	195.65	195.65	193.48	0.00	1.12
28	Matt paint		Ltr	0.15	126.09	126.09	123.91	0.00	1.75
<b>7.Electrical Fittings</b>									
29	1.5sqmm copper cable		100 meter	0.44	199.05	199.05	132.70	0.00	50.00
30	PVC Pipe	20mm	1metre	0.13	432.43	432.43	432.43	0.00	0.00
31	PVC bend		No.	0.04	216.67	216.67	216.67	0.00	0.00
32	PVC tee		No.	0.03	155.56	150.00	222.22	3.70	-30.00
33	5amps 5 pin at switch board itself		No.	0.00	115.38	115.38	115.38	0.00	0.00
34	5amps 5 pin non interlocking switch		No.	0.01	150.00	150.00	125.00	0.00	20.00
35	Ceiling Rose		No.	0.02	154.99	148.79	123.99	4.17	25.00
36	Bakelite pattern Holder		No.	0.02	166.67	166.67	116.67	0.00	42.86
37	Bulk Head Fittings		No.	0.01	222.22	222.22	155.56	0.00	42.86
38	8 SWG GI wire		ka	0.04	143.24	135.14	124.32	6.00	15.22
39	32 amps 500V fuse unit		No.	0.01	183.33	183.33	166.67	0.00	10.00
40	Junction box		No.	0.04	433.33	433.33	400.00	0.00	8.33
41	Jointbox		No.	0.01	180.00	160.00	120.00	12.50	50.00
42	Hylem sheet		No.	0.02	135.25	135.25	131.15	0.00	3.12
43	Flush type switch		No.	0.03	150.00	150.00	150.00	0.00	0.00
44	11wCFL bulb	11w	No.	0.01	166.67	166.67	166.67	0.00	0.00
45	Calling bell		No.	0.01	241.67	241.67	166.67	0.00	45.00
46	25amps single phase ELCB		No.	0.23	113.56	113.56	113.56	0.00	0.00
47	25mm GI pipe line	25mm	1 metre	0.05	150.86	150.86	137.93	0.00	9.37
48	GI Pipe 20mm(Earth pit)	20mm	1 metre	0.01	181.82	181.82	154.55	0.00	17.65
49	40mm dia GI pipe	40mm	1 metre	0.01	170.45	170.45	159.09	0.00	7.14
50	15mm GI Pipe	15mm	1 metre	0.01	177.23	177.23	160.00	0.00	10.77
51	GI reducers		No.	0.00	257.14	257.14	228.57	0.00	12.50
<b>8.Sanitary &amp; Water Supply</b>									
52	Indian Water Closet		No.	0.06	157.50	150.00	150.00	5.00	5.00
53	S.W.Gully Trap	6"x4"	No.	0.02	208.00	208.00	200.00	0.00	4.00
54	S.W.Bend	4"	No.	0.01	154.93	154.93	140.85	0.00	10.00
55	GI Pipe 20mm dia Hotwater line	20mm	1 metre	0.09	152.38	152.38	130.48	0.00	16.79
56	Stone ware pipe 100mm	100mm	1 metre	0.23	209.06	209.06	167.25	0.00	25.00
57	PVC 32mm dia	32mm	1 metre	0.14	151.58	149.12	122.81	1.65	23.43
58	PVC 20mm dia	20mm	1 metre	0.02	148.25	146.49	141.19	1.20	5.00
59	PVC rain water down fall 110mm	110mm	1 metre	0.18	201.70	201.35	161.79	0.18	24.67
60	HDPE Cylindrical		No.	0.48	249.23	246.15	246.15	1.25	1.25
<b>II.Labour cost</b>									
<b>1. Skilled Labour</b>									
61	Mason I & II (Brick Layer I & II Class )		No.	10.78	172.97	205.41	205.41	-15.79	-15.79
62	Carpenter		No.	1.18	166.67	177.78	177.78	-6.25	-6.25
63	Painter		No.	1.47	175.00	200.00	200.00	-12.50	-12.50
64	Fitter I & II		No.	0.74	175.00	187.50	187.50	-6.67	-6.67
65	Plumber		No.	0.13	155.56	177.78	177.78	-12.50	-12.50
66	Electrician Gr I & II		No.	0.41	207.41	207.41	200.00	0.00	3.70
<b>2.Unskilled Labour</b>									
67	Mazdoor-men		No.	9.27	190.48	166.67	166.67	14.29	14.29
68	Mazdoor-Women		No.	7.93	200.00	200.00	200.00	0.00	0.00
70	Helper		No.	0.35	300.00	300.00	250.00	0.00	20.00
<b>III.Other expenses</b>									
71	Mixing Charges per mortar		cu.m	0.53	500.00	500.00	200.00	0.00	150.00
72	E.B.Connection charges		No.	0.55	130.90	130.90	131.94	0.00	-0.79
73	Contingencies	2.5%		2.22	190.25	187.18	178.34	1.64	6.68
74	Supervision charges	10%		8.89	190.25	187.18	178.34	1.64	6.68
				100.00					20.77



**TABLE - 7**  
**BUILDING CONSTRUCTION COST INDEX**

QUARTER : SEPTEMBER 2021  
(BASE YEAR:2011-12=100)

CENTRE : COIMBATORE

Sl. No	ITEM	Weight	INDEX			% Variation	
			Current Quarter Sep 2021	Previous Quarter June 2021	Corresponding Qtr. of prev. year Sep 2020	Previous Quarter June 2021	Corresponding Qtr. of prev. year Sep 2020
<b>I</b>	<b><u>MATERIAL COST</u></b>						
1	BRICKS & TILES	19.49	170.89	170.53	153.52	0.22	11.32
2	SAND, STONE & OTHER QUARRY PRODUCTS	11.17	234.40	234.42	250.92	-0.01	-6.59
3	CEMENT & LIME	12.41	150.39	147.22	134.45	2.15	11.86
4	TIMBER & OTHER WOODS	2.61	232.28	232.28	197.98	0.00	17.32
5	IRON & STEEL	5.31	157.02	156.49	127.93	0.34	22.74
6	ANCILLIARY MATERIALS	2.14	185.87	186.14	184.00	-0.15	1.02
7	ELECTRICAL FITTINGS	1.17	205.38	204.61	175.57	0.38	16.98
8	SANITARY WARE & WATER SUPPL	1.23	208.45	206.53	187.96	0.93	10.90
<b>II</b>	<b><u>LABOUR COST</u></b>						
1	SKILLED LABOUR	14.72	201.56	201.56	201.35	0.00	0.10
2	UNSKILLED LABOUR	17.56	196.99	184.41	183.40	6.82	7.41
<b>III</b>	<b><u>OTHER EXPENSES</u></b>						
1	MIXING CHARGES	0.53	500.00	500.00	200.00	0.00	150.00
2	E.B.SERVICE CONNECTION CHAR	0.55	130.90	130.90	131.94	0.00	-0.79
3	CONTINGENCIES	2.22	190.25	187.18	178.34	1.64	6.68
4	SUPERVISION CHARGES	8.89	190.25	187.18	178.34	1.64	6.68
<b>I</b>	<b><i>MATERIAL COST</i></b>	<b>55.54</b>	<b>182.78</b>	<b>181.84</b>	<b>170.89</b>	0.52	6.96
<b>II</b>	<b><i>LABOUR COST</i></b>	<b>32.27</b>	<b>199.07</b>	<b>192.23</b>	<b>191.59</b>	3.56	3.91
<b>III</b>	<b><i>OTHER EXPENSES</i></b>	<b>12.19</b>	<b>200.94</b>	<b>198.14</b>	<b>177.18</b>	1.41	13.41
	<b>BUILDING CONSTRUCTION COST INDEX</b>	<b>100</b>	<b>190.25</b>	<b>187.18</b>	<b>178.34</b>	1.64	6.68

**TABLE - 8A**  
**BUILDING CONSTRUCTION COST INDEX**

Item-wise Cost relative

Quarter : September 2021  
(Base year:2011-12=100)

Centre : Erode

Sl. No.	Item	Specification	Unit	Weight	COST RELATIVE			% Variation	
					Current Quarter Sep 2021	Previous Quarter June 2021	Corresponding Qtr. of prev. year Sep 2020	Previous Quarter June 2021	Corresponding Qtr. of prev. year Sep 2020
<b>I. Material cost</b>									
<b>1.Bricks and Tiles Products</b>									
1	Bricks	9"x4.5"x2.25"	1000 Nos.	17.89	162.96	162.96	136.30	0.00	19.56
2	Brick Jelly	20mm	cu.m	1.03	117.50	117.50	112.50	0.00	4.44
3	Pressed Tiles	9"x9"	1000 Nos.	2.08	250.00	250.00	145.83	0.00	71.43
4	Glazes tiles	9"x9"	1 No.	0.40	234.04	212.77	191.49	10.00	22.22
5	Ceramic tiles	9"x9"	1 No.	0.95	246.15	246.15	215.38	0.00	14.29
<b>2.Sand stone and other Quarry Products</b>									
6	Sand for mortar	River	cu.m	3.35	481.35	481.35	601.97	0.00	-20.04
7	Stone Jelly (HBSJ)	40mm	cu.m	2.94	134.40	134.40	122.15	0.00	10.03
8	Stone Jelly (HBSJ)	20mm	cu.m	0.33	129.92	129.92	106.70	0.00	21.76
9	Stone Jelly Chips (HBSJ)	10mm	cu.m	1.83	112.43	112.43	99.46	0.00	13.04
10	Rough stone		cu.m	0.45	245.21	269.79	245.95	-9.11	-0.30
11	Bond stone		cu.m	0.59	225.38	225.27	208.97	0.05	7.86
<b>3.Cement and Lime</b>									
12	Cement		M.T	13.07	151.86	151.86	135.70	0.00	11.90
13	Lime stone		cu.m	0.28	175.00	162.50	120.00	7.69	45.83
<b>4.Timber and other wood</b>									
14	TW Frame		sq.m	2.81	134.04	134.04	127.66	0.00	5.00
15	TW Panel door shutter		sq.m	0.73	215.20	184.46	172.16	16.67	25.00
16	Solid PVC door shutter		sq.m	0.40	141.15	135.27	123.50	4.35	14.29
<b>5.Iron and Steel</b>									
17	Mild Steel Rods	10mm	MT	1.46	133.33	131.18	101.08	1.64	31.91
18	Ribbed Tar Steel (RTS)	8mm	MT	2.43	139.90	137.82	107.77	1.50	29.81
19	Binding Wire		Kg	0.50	149.38	146.06	119.50	2.27	25.00
20	Door catch		No.	0.03	175.00	175.00	162.50	0.00	7.69
21	Hold fast		No.	0.06	234.38	234.38	218.75	0.00	7.14
22	Tower bolt receiver		No.	0.05	145.45	136.36	100.00	6.67	45.45
23	Steel window ventilator		Kg	1.47	164.18	164.18	149.25	0.00	10.00
<b>6.Ancillary Materials</b>									
25	Ready mix Prime paint		Ltr	0.10	151.63	151.63	141.18	0.00	7.41
26	Ready mix Synthetic Enamel paint		Ltr	0.05	163.64	163.64	145.45	0.00	12.50
27	Cement paint		Kg	1.96	244.57	244.57	228.26	0.00	7.15
28	Matt paint		Ltr	0.11	125.00	125.00	121.88	0.00	2.56
<b>7.Electrical Fittings</b>									
29	1.5sqmm copper cable		100 meter	0.53	146.67	146.67	146.67	0.00	0.00
30	PVC Pipe	20mm	1metre	0.11	290.86	277.01	277.01	5.00	5.00
31	PVC bend		No.	0.09	320.00	320.00	320.00	0.00	0.00
32	PVC tee		No.	0.04	208.33	208.33	208.33	0.00	0.00
33	5amps 5 pin at switch board itself		No.	0.00	115.38	115.38	107.69	0.00	7.14
34	5amps 5 pin non interlocking switch		No.	0.00	450.00	450.00	400.00	0.00	12.50
35	Ceiling Rose		No.	0.02	250.00	250.00	208.33	0.00	20.00
36	Bakelite pattern Holder		No.	0.02	176.92	230.77	169.23	-23.33	4.55
37	Bulk Head Fittings		No.	0.01	300.00	266.67	166.67	12.50	80.00
38	8 SWG GI wire		kg	0.04	202.40	202.40	162.50	0.00	24.55
39	32 amps 500V fuse unit		No.	0.01	171.43	171.43	171.43	0.00	0.00
40	Junction box		No.	0.04	733.33	733.33	400.00	0.00	83.33
41	Jointbox		No.	0.02	173.33	173.33	133.33	0.00	30.00
42	Hylem sheet		No.	0.02	131.15	131.15	124.59	0.00	5.26
43	Flush type switch		No.	0.04	157.14	157.14	142.86	0.00	10.00
44	11wCFL bulb	11w	No.	0.01	133.33	133.33	133.33	0.00	0.00
45	Calling bell		No.	0.01	272.73	266.67	254.55	2.27	7.14
46	25amps single phase ELCB		No.	0.25	116.09	112.93	112.93	2.79	2.79
47	25mm GI pipe line	25mm	1 metre	0.05	323.28	323.28	306.03	0.00	5.63
48	GI Pipe 20mm(Earth pit)	20mm	1 metre	0.01	208.33	263.89	166.67	-21.05	25.00
49	40mm dia GI pipe	40mm	1 metre	0.01	228.77	228.77	224.06	0.00	2.11
50	15mm GI Pipe	15mm	1 metre	0.01	362.90	362.90	354.84	0.00	2.27
51	GI reducers		No.	0.00	166.67	153.33	146.67	8.70	13.64
<b>8.Sanitary &amp; Water Supply</b>									
52	Indian Water Closet		No.	0.05	166.67	166.67	153.33	0.00	8.70
53	S.W.Gully Trap	6"x4"	No.	0.01	266.67	266.67	213.33	0.00	25.00
54	S.W.Bend	4"	No.	0.01	490.91	490.91	481.82	0.00	1.89
55	GI Pipe 20mm dia Hotwater line	20mm	1 metre	0.07	412.75	291.68	186.69	41.51	121.09
56	Stone ware pipe 100mm	100mm	1 metre	0.14	675.00	675.00	300.00	0.00	125.00
57	PVC 32mm dia	32mm	1 metre	0.13	219.51	219.51	207.32	0.00	5.88
58	PVC 20mm dia	20mm	1 metre	0.02	244.44	244.44	222.22	0.00	10.00
59	PVC rain water down fall 110mm	110mm	1 metre	0.26	280.00	280.00	276.00	0.00	1.45
60	HDPE Cylindrical		No.	0.51	138.46	138.46	138.46	0.00	0.00
<b>II.Labour cost</b>									
<b>1. Skilled Labour</b>									
61	Mason I & II (Brick Layer I & II Class )		No.	10.01	200.00	200.00	175.00	0.00	14.29
62	Carpenter		No.	0.99	214.29	214.29	200.00	0.00	7.14
63	Painter		No.	1.18	233.33	233.33	216.67	0.00	7.69
64	Fitter I & II		No.	0.59	233.33	233.33	216.67	0.00	7.69
65	Plumber		No.	0.09	233.33	216.67	200.00	7.69	16.67
66	Electrician Gr I & II		No.	0.39	233.33	216.67	200.00	7.69	16.67
<b>2.Unskilled Labour</b>									
67	Mazdoor-men		No.	6.52	290.91	290.91	181.82	0.00	60.00
68	Mazdoor-Women		No.	6.81	175.00	175.00	160.00	0.00	9.38
70	Helper		No.	0.38	250.00	250.00	250.00	0.00	0.00
<b>III.Other expenses</b>									
71	Mixing Charges per mortar		cu.m	1.41	200.00	200.00	160.00	0.00	25.00
72	E.B.Connection charges		No.	0.60	183.98	183.98	180.39	0.00	1.99
73	Contingencies	2.5%		2.22	200.09	199.48	175.25	0.31	14.17
74	Supervision charges	10%		8.89	200.09	199.48	175.25	0.31	14.17
				100.00					2.72

**TABLE - 8**  
**BUILDING CONSTRUCTION COST INDEX**

QUARTER : SEPTEMBER 2021

CENTRE : ERODE

(BASE YEAR:2011-12=100)

SI. No	ITEM	Weight	INDEX			% Variation	
			Current Quarter Sep 2021	Previous Quarter June 2021	Corresponding Qtr. of prev. year Sep 2020	Previous Quarter June 2021	Corresponding Qtr. of prev. year Sep 2020
<b>I</b>	<b><u>MATERIAL COST</u></b>						
1	BRICKS & TILES	22.34	173.77	173.39	140.45	0.22	23.73
2	SAND, STONE & OTHER QUARRY PRODUCTS	9.51	263.35	264.51	297.81	-0.44	-11.57
3	CEMENT & LIME	13.35	152.35	152.08	135.37	0.17	12.54
4	TIMBER & OTHER WOODS	3.93	149.76	143.48	135.46	4.37	10.55
5	IRON & STEEL	6.00	146.20	144.48	118.59	1.19	23.28
6	ANCILLIARY MATERIALS	2.23	232.40	447.75	216.99	-48.10	7.10
7	ELECTRICAL FITTINGS	1.36	199.73	197.88	182.96	0.93	9.17
8	SANITARY WARE & WATER SUPPL	1.20	262.52	255.05	202.44	2.93	29.68
<b>II</b>	<b><u>LABOUR COST</u></b>						
1	SKILLED LABOUR	13.26	206.75	206.14	183.36	0.30	12.76
2	UNSKILLED LABOUR	13.70	232.20	232.20	172.87	0.00	34.32
<b>III</b>	<b><u>OTHER EXPENSES</u></b>						
1	MIXING CHARGES	1.41	200.00	200.00	160.00	0.00	25.00
2	E.B.SERVICE CONNECTION CHAR	0.60	183.98	183.98	180.39	0.00	1.99
3	CONTINGENCIES	2.22	194.69	194.07	170.21	0.32	14.38
4	SUPERVISION CHARGES	8.89	194.69	194.07	170.21	0.32	14.38
<b>I</b>	<b><i>MATERIAL COST</i></b>	<b>59.92</b>	<b>183.43</b>	<b>182.63</b>	<b>166.82</b>	0.44	9.96
<b>II</b>	<b><i>LABOUR COST</i></b>	<b>26.96</b>	<b>219.69</b>	<b>219.39</b>	<b>178.03</b>	0.14	23.40
<b>III</b>	<b><i>OTHER EXPENSES</i></b>	<b>13.12</b>	<b>194.77</b>	<b>194.25</b>	<b>169.57</b>	0.27	14.86
	<b>BUILDING CONSTRUCTION COST INDEX</b>	<b>100</b>	<b>194.69</b>	<b>194.07</b>	<b>170.21</b>	0.32	14.38

**TABLE - 10A**  
**BUILDING CONSTRUCTION COST INDEX**

Item-wise Cost relative

Quarter : September 2021  
(Base year:2011-12=100)

Centre : Tiruchirappalli

Sl. No.	Item	Specification	Unit	Weight	COST RELATIVE			% Variation	
					Current Quarter Sep 2021	Previous Quarter June 2021	Corresponding Qtr. of prev. year Sep 2020	Previous Quarter June 2021	Corresponding Qtr. of prev. year Sep 2020
<b>I. Material cost</b>									
<b>1.Bricks and Tiles Products</b>									
1	Bricks	9"x4.5"x2.25"	1000 Nos.	14.01	183.91	183.91	160.92	0.00	14.29
2	Brick Jelly	20mm	cu.m	0.55	188.02	184.42	182.29	1.95	3.14
3	Pressed Tiles	9"x9"	1000 Nos.	1.80	136.59	126.83	121.95	7.69	12.00
4	Glazes tiles	9"x9"	1 No.	0.14	380.95	380.95	357.14	0.00	6.67
5	Ceramic tiles	9"x9"	1 No.	0.59	320.00	320.00	300.00	0.00	6.67
<b>2.Sand stone and other Quarry Products</b>									
6	Sand for mortar	River	cu.m	4.77	856.99	856.99	714.15	0.00	20.00
7	Stone Jelly (HBSJ)	40mm	cu.m	2.98	140.48	140.48	137.54	0.00	2.14
8	Stone Jelly (HBSJ)	20mm	cu.m	0.34	125.36	125.36	121.88	0.00	2.86
9	Stone Jelly Chips (HBSJ)	10mm	cu.m	1.36	120.67	120.67	117.79	0.00	2.44
10	Rough stone		cu.m	0.46	286.11	252.43	151.74	13.34	88.56
11	Bond stone		cu.m	0.00	0.00	0.00	0.00	0.00	0.00
<b>3.Cement and Lime</b>									
12	Cement		M.T	13.15	152.85	152.85	136.59	0.00	11.90
13	Lime stone		cu.m	0.21	458.33	416.67	250.00	10.00	83.33
<b>4.Timber and other wood</b>									
14	TW Frame		sq.m	1.05	124.39	124.39	117.34	0.00	6.01
15	TW Panel door shutter		sq.m	0.72	154.24	146.75	146.75	5.10	5.10
16	Solid PVC door shutter		sq.m	0.42	165.85	165.85	165.85	0.00	0.00
<b>5.Iron and Steel</b>									
17	Mild Steel Rods	10mm	MT	1.50	138.30	138.30	106.38	0.00	30.00
18	Ribbed Tar Steel (RTS)	8mm	MT	2.44	135.98	135.98	110.88	0.00	22.64
19	Binding Wire		Kg	0.55	135.85	135.85	108.68	0.00	25.00
20	Door catch		No.	0.04	140.50	130.74	130.74	7.46	7.46
21	Hold fast		No.	0.03	333.33	333.33	312.50	0.00	6.67
22	Tower bolt receiver		No.	0.03	130.08	130.08	130.08	0.00	0.00
23	Steel window ventilator		Kq	1.28	208.70	208.70	191.30	0.00	9.09
<b>6.Ancillary Materials</b>									
25	Ready mix Prime paint		Ltr	0.11	142.86	137.93	137.93	3.57	3.57
26	Ready mix Synthetic Enamel paint		Ltr	0.06	150.00	150.00	150.00	0.00	0.00
27	Cement paint		Kq	1.99	173.91	173.91	163.04	0.00	6.67
28	Matt paint		Ltr	0.19	113.55	113.55	106.23	0.00	6.90
<b>7.Electrical Fittings</b>									
29	1.5sqmm copper cable		100 meter	0.62	129.28	129.28	129.28	0.00	0.00
30	PVC Pipe	20mm	1metre	0.10	200.00	200.00	185.71	0.00	7.69
31	PVC bend		No.	0.03	266.67	266.67	278.10	0.00	-4.11
32	PVC tee		No.	0.02	301.59	301.59	233.33	0.00	29.25
33	5amps 5 pin at switch board itself		No.	0.00	200.00	153.33	153.33	30.43	30.43
34	5amps 5 pin non interlocking switch		No.	0.00	145.45	145.45	145.45	0.00	0.00
35	Ceiling Rose		No.	0.02	166.67	166.67	126.67	0.00	31.58
36	Bakelite pattern Holder		No.	0.02	182.35	182.35	152.94	0.00	19.23
37	Bulk Head Fittings		No.	0.01	250.00	250.00	222.22	0.00	12.50
38	8 SWG GI wire		kg	0.04	215.69	215.69	160.43	0.00	34.44
39	32 amps 500V fuse unit		No.	0.01	225.86	225.86	144.14	0.00	56.70
40	Junction box		No.	0.04	333.33	333.33	304.00	0.00	9.65
41	Jointbox		No.	0.02	333.33	333.33	243.33	0.00	36.99
42	Hylem sheet		No.	0.01	141.30	141.30	130.63	0.00	8.17
43	Flush type switch		No.	0.05	129.70	129.70	129.70	0.00	0.00
44	11wCFL bulb	11w	No.	0.01	173.33	173.33	173.33	0.00	0.00
45	Calling bell		No.	0.01	201.20	201.20	201.20	0.00	0.00
46	25amps single phase ELCB		No.	0.25	141.51	141.51	141.51	0.00	0.00
47	25mm GI pipe line	25mm	1 metre	0.05	230.43	230.43	230.43	0.00	0.00
48	GI Pipe 20mm(Earth pit)	20mm	1 metre	0.01	243.06	170.83	166.67	42.28	45.83
49	40mm dia GI pipe	40mm	1 metre	0.01	212.93	212.93	110.88	0.00	92.02
50	15mm GI Pipe	15mm	1 metre	0.01	217.46	217.46	217.46	0.00	0.00
51	GI reducers		No.	0.01	128.77	128.77	191.23	0.00	-32.66
<b>8.Sanitary &amp; Water Supply</b>									
52	Indian Water Closet		No.	0.14	152.00	152.00	141.18	0.00	7.67
53	S.W.Gully Trap	6"x4"	No.	0.03	205.00	197.50	142.50	3.80	43.86
54	S.W.Bend	4"	No.	0.01	166.67	166.67	154.76	0.00	7.69
55	GI Pipe 20mm dia Hotwater line	20mm	1 metre	0.11	136.36	131.82	131.82	3.45	3.45
56	Stone ware pipe 100mm	100mm	1 metre	0.36	134.29	134.29	114.29	0.00	17.50
57	PVC 32mm dia	32mm	1 metre	0.15	219.15	219.15	117.23	0.00	86.93
58	PVC 20mm dia	20mm	1 metre	0.02	351.35	281.08	198.92	25.00	76.63
59	PVC rain water down fall 110mm	110mm	1 metre	0.30	148.20	148.20	124.32	0.00	19.21
60	HDPE Cylindrical		No.	0.52	153.85	138.46	138.46	11.11	11.11
<b>II.Labour cost</b>									
<b>1. Skilled Labour</b>									
61	Mason I & II (Brick Layer I & II Class )		No.	11.72	129.73	129.73	129.73	0.00	0.00
62	Carpenter		No.	1.18	169.70	169.70	145.45	0.00	16.67
63	Painter		No.	1.50	160.00	160.00	133.33	0.00	20.00
64	Fitter I & II		No.	0.80	150.00	150.00	125.00	0.00	20.00
65	Plumber		No.	0.13	150.00	150.00	125.00	0.00	20.00
66	Electrician Gr I & II		No.	0.53	125.00	125.00	125.00	0.00	0.00
<b>2.Unskilled Labour</b>									
67	Mazdoor-men		No.	8.55	224.56	196.49	182.46	14.29	23.08
68	Mazdoor-Women		No.	7.84	175.82	153.85	131.87	14.29	33.33
70	Helper		No.	0.27	289.86	289.86	253.62	0.00	14.29
<b>III.Other expenses</b>									
71	Mixing Charges per mortar		cu.m	2.00	142.86	128.57	117.71	11.11	21.36
72	E.B.Connection charges		No.	0.60	169.06	169.06	167.67	0.00	0.83
73	Contingencies	2.5%		2.22	204.04	198.39	176.15	2.85	15.83
74	Supervision charges	10%		8.89	204.04	198.39	176.15	2.85	15.83
				100.00					16.97

**TABLE - 10**  
**BUILDING CONSTRUCTION COST INDEX**

CENTRE : TIRUCHIRAPPALLI

QUARTER : SEPTEMBER 2021  
(BASE YEAR:2011-12=100)

Sl. No	ITEM	Weight	INDEX			% Variation	
			Current Quarter Sep 2021	Previous Quarter June 2021	Corresponding Qtr. of prev. year Sep 2020	Previous Quarter June 2021	Corresponding Qtr. of prev. year Sep 2020
<b>I</b>	<b><u>MATERIAL COST</u></b>						
1	BRICKS & TILES	17.09	185.45	184.31	164.00	0.62	13.08
2	SAND, STONE & OTHER QUARRY PRODUCTS	9.91	488.94	487.38	412.55	0.32	18.52
3	CEMENT & LIME	13.36	157.65	157.00	138.37	0.42	13.93
4	TIMBER & OTHER WOODS	2.19	142.17	139.70	136.32	1.77	4.29
5	IRON & STEEL	5.86	153.42	153.35	128.31	0.04	19.56
6	ANCILLIARY MATERIALS	2.35	166.91	166.67	156.87	0.14	6.40
7	ELECTRICAL FITTINGS	1.37	164.43	163.66	155.88	0.47	5.48
8	SANITARY WARE & WATER SUPPLY	1.63	156.59	150.51	129.20	4.04	21.19
<b>II</b>	<b><u>LABOUR COST</u></b>						
1	SKILLED LABOUR	15.85	136.59	136.59	130.81	0.00	4.42
2	UNSKILLED LABOUR	16.66	202.66	177.90	159.78	13.91	26.84
<b>III</b>	<b><u>OTHER EXPENSES</u></b>						
1	MIXING CHARGES	2.00	142.86	128.57	117.71	11.11	21.36
2	E.B.SERVICE CONNECTION CHARGES	0.60	169.06	169.06	167.67	0.00	0.83
3	CONTINGENCIES	2.22	204.04	198.39	176.15	2.85	15.83
4	SUPERVISION CHARGES	8.89	204.04	198.39	176.15	2.85	15.83
<b>I</b>	<b><i>MATERIAL COST</i></b>	<b>53.78</b>	<b>227.01</b>	<b>225.88</b>	<b>196.86</b>	0.50	15.32
<b>II</b>	<b><i>LABOUR COST</i></b>	<b>32.51</b>	<b>170.44</b>	<b>157.76</b>	<b>145.65</b>	8.04	17.02
<b>III</b>	<b><i>OTHER EXPENSES</i></b>	<b>13.72</b>	<b>193.57</b>	<b>186.91</b>	<b>167.25</b>	3.56	15.74
	<b>BUILDING CONSTRUCTION COST INDEX</b>	<b>100</b>	<b>204.04</b>	<b>198.39</b>	<b>176.15</b>	2.85	15.83

**TABLE - 9A**  
**BUILDING CONSTRUCTION COST INDEX**

Item-wise Cost relative

Quarter : September 2021  
(Base year:2011-12=100)

Centre : Thanjavur

Sl. No.	Item	Specification	Unit	Weight	COST RELATIVE			% Variation	
					Current Quarter Sep 2021	Previous Quarter June 2021	Corresponding Qtr. of prev. year Sep 2020	Previous Quarter June 2021	Corresponding Qtr. of prev. year Sep 2020
<b>I. Material cost</b>									
<b>1.Bricks and Tiles Products</b>									
1	Bricks	9"x4.5"x2.25"	1000 Nos.	12.18	186.67	181.33	146.67	2.94	27.27
2	Brick Jelly	20mm	cu.m	0.59	146.54	137.74	135.47	6.39	8.17
3	Pressed Tiles	9"x9"	1000 Nos.	1.58	156.21	150.63	150.63	3.70	3.70
4	Glazes tiles	9"x9"	1 No.	0.14	439.02	439.02	414.63	0.00	5.88
5	Ceramic tiles	9"x9"	1 No.	0.61	341.46	341.46	312.20	0.00	9.38
<b>2.Sand stone and other Quarry Products</b>									
6	Sand for mortar	River	cu.m	2.78	375.25	345.61	320.87	8.58	16.95
7	Stone Jelly (HBSJ)	40mm	cu.m	5.42	123.70	115.26	101.63	7.33	21.72
8	Stone Jelly (HBSJ)	20mm	cu.m	0.46	111.80	105.09	101.63	6.39	10.01
9	Stone Jelly Chips (HBSJ)	10mm	cu.m	2.38	112.10	112.10	110.46	0.00	1.48
10	Rough stone		cu.m	0.44	167.27	156.36	145.45	6.98	15.00
11	Bond stone		cu.m	0.61	166.89	164.24	164.24	1.61	1.61
<b>3.Cement and Lime</b>									
12	Cement		M.T	13.15	147.54	140.98	140.98	4.65	4.65
13	Lime stone		cu.m	0.28	126.67	110.15	110.15	15.00	15.00
<b>4.Timber and other wood</b>									
14	TW Frame		sq.m	0.83	277.78	263.16	248.54	5.56	11.76
15	TW Panel door shutter		sq.m	0.88	198.80	192.77	186.75	3.13	6.45
16	Solid PVC door shutter		sq.m	0.49	154.17	154.17	150.00	0.00	2.78
<b>5.Iron and Steel</b>									
17	Mild Steel Rods	10mm	MT	1.54	147.92	139.58	114.58	5.97	29.09
18	Ribbed Tar Steel (RTS)	8mm	MT	2.52	146.86	136.66	112.19	7.46	30.91
19	Binding Wire		Kg	0.57	130.37	124.44	114.07	4.76	14.29
20	Door catch		No.	0.03	161.49	124.22	111.80	30.00	44.44
21	Hold fast		No.	0.06	238.10	190.48	158.73	25.00	50.00
22	Tower bolt receiver		No.	0.02	177.78	177.78	177.78	0.00	0.00
23	Steel window ventilator		Kq	1.29	191.30	191.30	173.91	0.00	10.00
<b>6.Ancillary Materials</b>									
25	Ready mix Prime paint		Ltr	0.11	139.83	142.32	139.83	-1.75	0.00
26	Ready mix Synthetic Enamel paint		Ltr	0.06	152.89	152.89	148.76	0.00	2.78
27	Cement paint		Kq	1.92	125.00	113.64	113.64	10.00	10.00
28	Matt paint		Ltr	0.10	142.86	114.29	114.29	25.00	25.00
<b>7.Electrical Fittings</b>									
29	1.5sqmm copper cable		100 meter	0.62	123.82	123.82	123.82	0.00	0.00
30	PVC Pipe	20mm	1metre	0.11	347.22	347.22	347.22	0.00	0.00
31	PVC bend		No.	0.02	666.67	666.67	500.00	0.00	33.33
32	PVC tee		No.	0.01	947.37	947.37	631.58	0.00	50.00
33	5amps 5 pin at switch board itself		No.	0.00	178.57	142.86	142.86	25.00	25.00
34	5amps 5 pin non interlocking switch		No.	0.00	227.27	181.82	163.64	25.00	38.89
35	Ceiling Rose		No.	0.02	133.33	133.33	133.33	0.00	0.00
36	Bakelite pattern Holder		No.	0.02	212.12	212.12	181.82	0.00	16.67
37	Bulk Head Fittings		No.	0.01	250.00	250.00	208.33	0.00	20.00
38	8 SWG GI wire		Kg	0.04	211.86	190.68	148.31	11.11	42.86
39	32 amps 500V fuse unit		No.	0.01	200.00	188.24	176.47	6.25	13.33
40	Junction box		No.	0.02	166.67	166.67	166.67	0.00	0.00
41	Jointbox		No.	0.01	111.11	111.11	111.11	0.00	0.00
42	Hylem sheet		No.	0.01	147.33	134.57	129.93	9.48	13.39
43	Flush type switch		No.	0.05	129.03	129.03	129.03	0.00	0.00
44	11w CFL bulb	11w	No.	0.02	151.26	113.45	109.24	33.33	38.46
45	Calling bell		No.	0.01	365.59	322.58	333.33	13.33	9.68
46	25amps single phase ELCB		No.	0.25	138.80	132.49	123.03	4.76	12.82
47	25mm GI pipe line	25mm	1 metre	0.05	159.65	133.04	133.04	20.00	20.00
48	GI Pipe 20mm(Earth pit)	20mm	1 metre	0.01	194.44	187.50	152.78	3.70	27.27
49	40mm dia GI pipe	40mm	1 metre	0.01	250.87	125.44	111.50	100.00	125.00
50	15mm GI Pipe	15mm	1 metre	0.01	260.16	243.90	243.90	6.67	6.67
51	GI reducers		No.	0.01	148.65	135.14	121.62	10.00	22.22
<b>8.Sanitary &amp; Water Supply</b>									
52	Indian Water Closet		No.	0.07	162.79	158.14	158.14	2.94	2.94
53	S.W.Gully Trap	6"x4"	No.	0.01	133.33	133.33	133.33	0.00	0.00
54	S.W.Bend	4"	No.	0.01	105.56	105.56	105.56	0.00	0.00
55	GI Pipe 20mm dia Hotwater line	20mm	1 metre	0.08	190.50	139.70	139.70	36.36	36.36
56	Stone ware pipe 100mm	100mm	1 metre	0.30	105.88	105.88	105.88	0.00	0.00
57	PVC 32mm dia	32mm	1 metre	0.15	250.00	217.39	217.39	15.00	15.00
58	PVC 20mm dia	20mm	1 metre	0.02	383.56	493.15	328.77	-22.22	16.67
59	PVC rain water down fall 110mm	110mm	1 metre	0.31	200.68	197.28	149.66	1.72	34.09
60	HDPE Cylindrical		No.	0.52	153.85	147.69	147.69	4.17	4.17
<b>II.Labour cost</b>									
<b>1. Skilled Labour</b>									
61	Mason I & II ( Brick Layer I & II Class )		No.	12.61	172.15	172.15	151.90	0.00	13.33
62	Carpenter		No.	1.23	183.53	176.47	157.65	4.00	16.42
63	Painter		No.	1.51	200.00	194.67	178.67	2.74	11.94
64	Fitter I & II		No.	0.76	192.00	186.67	186.67	2.86	2.86
65	Plumber		No.	0.12	192.00	186.67	186.67	2.86	2.86
66	Electrician Gr I & II		No.	0.50	192.00	186.67	178.67	2.86	7.46
<b>2.Unskilled Labour</b>									
67	Mazdoor-men		No.	8.32	180.36	174.55	174.55	3.33	3.33
68	Mazdoor-Women		No.	7.82	204.44	200.00	200.00	2.22	2.22
70	Helper		No.	0.24	321.29	321.29	321.29	0.00	0.00
<b>III.Other expenses</b>									
71	Mixing Charges per mortar		cu.m	1.33	217.39	195.65	152.17	11.11	42.86
72	E.B.Connection charges		No.	0.58	124.68	121.98	109.92	2.21	13.43
73	Contingencies	2.5%		2.22	177.09	170.89	157.96	3.63	12.11
74	Supervision charges	10%		8.89	177.09	170.89	157.96	3.63	12.11
				100.00					19.76

**TABLE - 9**  
**BUILDING CONSTRUCTION COST INDEX**

QUARTER : SEPTEMBER 2021

CENTRE : THANJAVUR

(BASE YEAR:2011-12=100)

Sl. No	ITEM	Weight	INDEX			% Variation	
			Current Quarter Sep 2021	Previous Quarter June 2021	Corresponding Qtr. of prev. year Sep 2020	Previous Quarter June 2021	Corresponding Qtr. of prev. year Sep 2020
<b>I</b>	<b><u>MATERIAL COST</u></b>						
1	BRICKS & TILES	15.10	190.56	185.33	155.88	2.82	22.25
2	SAND, STONE & OTHER QUARRY PRODUCTS	12.10	182.58	171.19	158.54	6.65	15.16
3	CEMENT & LIME	13.43	147.10	140.34	140.34	4.82	4.82
4	TIMBER & OTHER WOODS	2.21	218.69	210.76	201.90	3.76	8.31
5	IRON & STEEL	6.03	156.19	148.60	126.91	5.11	23.07
6	ANCILLIARY MATERIALS	2.19	127.30	116.15	115.91	9.60	9.83
7	ELECTRICAL FITTINGS	1.34	168.96	163.68	155.53	3.23	8.64
8	SANITARY WARE & WATER SUPPLY	1.47	168.51	160.73	148.59	4.84	13.41
<b>II</b>	<b><u>LABOUR COST</u></b>						
1	SKILLED LABOUR	16.73	177.13	175.70	157.36	0.82	12.57
2	UNSKILLED LABOUR	16.38	193.94	188.86	188.86	2.69	2.69
<b>III</b>	<b><u>OTHER EXPENSES</u></b>						
1	MIXING CHARGES	1.33	217.39	195.65	152.17	11.11	42.86
2	E.B.SERVICE CONNECTION CHARGES	0.58	124.68	121.98	109.92	2.21	13.43
3	CONTINGENCIES	2.22	177.09	170.89	157.96	3.63	12.11
4	SUPERVISION CHARGES	8.89	177.09	170.89	157.96	3.63	12.11
<b>I</b>	<b><i>MATERIAL COST</i></b>	<b>53.87</b>	<b>171.53</b>	<b>163.85</b>	<b>149.41</b>	4.69	14.80
<b>II</b>	<b><i>LABOUR COST</i></b>	<b>33.11</b>	<b>185.45</b>	<b>182.21</b>	<b>172.95</b>	1.78	7.23
<b>III</b>	<b><i>OTHER EXPENSES</i></b>	<b>13.02</b>	<b>178.85</b>	<b>171.22</b>	<b>155.22</b>	4.46	15.22
	<b>BUILDING CONSTRUCTION COST INDEX</b>	<b>100</b>	<b>177.09</b>	<b>170.89</b>	<b>157.96</b>	3.63	12.11

**TABLE - 11A**  
**BUILDING CONSTRUCTION COST INDEX**

Centre : Pudukkottai

Item-wise Cost relative

Quarter : September 2021  
(Base year:2011-12=100)

Sl. No.	Item	Specification	Unit	Weight	COST RELATIVE			% Variation	
					Current Quarter Sep 2021	Previous Quarter June 2021	Corresponding Qtr. of prev. year Sep 2020	Previous Quarter June 2021	Corresponding Qtr. of prev. year Sep 2020
<b>I. Material cost</b>									
<b>1.Bricks and Tiles Products</b>									
1	Bricks	9"x4.5"x2.25"	1000 Nos.	14.26	221.95	207.32	189.02	7.06	17.42
2	Brick Jelly	20mm	cu.m	0.32	288.55	221.96	213.07	30.00	35.43
3	Pressed Tiles	9"x9"	1000 Nos.	2.08	172.73	163.64	140.91	5.56	22.58
4	Glazes tiles	9"x9"	1 No.	0.25	177.78	177.78	162.96	0.00	9.09
5	Ceramic tiles	9"x9"	1 No.	2.02	133.33	133.33	126.98	0.00	5.00
<b>2.Sand stone and other Quarry Products</b>									
6	Sand for mortar	River	cu.m	3.37	611.78	582.65	563.27	5.00	8.61
7	Stone Jelly (HBSJ)	40mm	cu.m	3.38	133.92	126.14	126.15	6.17	6.16
8	Stone Jelly (HBSJ)	20mm	cu.m	0.36	130.36	124.15	124.15	5.00	5.00
9	Stone Jelly Chips (HBSJ)	10mm	cu.m	1.86	142.46	139.66	121.04	2.00	17.69
10	Rough stone		cu.m	0.51	115.45	122.24	118.85	-5.56	-2.86
11	Bond stone		cu.m	0.65	113.16	113.16	108.89	0.00	3.92
<b>3.Cement and Lime</b>									
12	Cement		M.T	14.15	140.41	150.20	140.41	-6.52	0.00
13	Lime stone		cu.m	0.22	106.79	106.79	103.20	0.00	3.49
<b>4.Timber and other wood</b>									
14	TW Frame		sq.m	1.06	182.66	170.28	167.18	7.27	9.26
15	TW Panel door shutter		sq.m	1.65	172.41	165.52	144.83	4.17	19.05
16	Solid PVC door shutter		sq.m	0.62	138.30	134.75	127.66	2.63	8.33
<b>5.Iron and Steel</b>									
17	Mild Steel Rods	10mm	MT	1.63	150.45	148.97	120.23	0.99	25.13
18	Ribbed Tar Steel (RTS)	8mm	MT	2.67	143.90	143.08	115.08	0.58	25.04
19	Binding Wire		Kq	0.60	128.30	128.30	104.15	0.00	23.19
20	Door catch		No.	0.03	175.00	175.00	156.25	0.00	12.00
21	Hold fast		No.	0.11	145.45	145.45	136.36	0.00	6.67
22	Tower bolt receiver		No.	0.03	260.00	233.33	166.67	11.43	56.00
23	Steel window ventilator		Kq	1.61	149.25	149.25	144.78	0.00	3.09
<b>6.Ancillary Materials</b>									
25	Ready mix Prime paint		Ltr	0.13	142.04	139.75	135.17	1.64	5.08
26	Ready mix Synthetic Enamel paint		Ltr	0.06	160.87	156.52	152.17	2.78	5.71
27	Cement paint		Kq	2.33	210.00	210.00	200.00	0.00	5.00
28	Matt paint		Ltr	0.13	200.00	193.94	181.82	3.12	10.00
<b>7.Electrical Fittings</b>									
29	1.5sqmm copper cable		100 meter	1.02	166.67	166.67	108.57	0.00	53.51
30	PVC Pipe	20mm	1metre	0.16	160.00	160.00	160.00	0.00	0.00
31	PVC bend		No.	0.03	500.00	375.00	350.00	33.33	42.86
32	PVC tee		No.	0.03	175.00	162.50	162.50	7.69	7.69
33	5amps 5 pin at switch board itself		No.	0.01	158.73	158.73	95.24	0.00	66.67
34	5amps 5 pin non interlocking switch		No.	0.00	136.36	136.36	136.36	0.00	0.00
35	Ceiling Rose		No.	0.02	142.86	142.86	142.86	0.00	0.00
36	Bakelite pattern Holder		No.	0.03	136.84	136.84	136.84	0.00	0.00
37	Bulk Head Fittings		No.	0.02	169.91	169.91	145.13	0.00	17.07
38	8 SWG GI wire		kq	0.06	158.42	155.15	159.24	2.11	-0.51
39	32 amps 500V fuse unit		No.	0.02	426.97	426.97	134.83	0.00	216.67
40	Junction box		No.	0.04	340.00	340.00	340.00	0.00	0.00
41	Jointbox		No.	0.02	161.62	161.62	161.62	0.00	0.00
42	Hylem sheet		No.	0.02	115.63	115.63	112.50	0.00	2.78
43	Flush type switch		No.	0.04	125.00	125.00	125.00	0.00	0.00
44	11wCFL bulb	11w	No.	0.01	233.33	216.67	200.00	7.69	16.67
45	Callinq bell		No.	0.01	260.42	250.00	208.33	4.17	25.00
46	25amps single phase ELCB		No.	0.18	128.57	128.57	128.57	0.00	0.00
47	25mm GI pipe line	25mm	1 metre	0.05	187.50	134.62	134.62	39.29	39.29
48	GI Pipe 20mm(Earth pit)	20mm	1 metre	0.02	157.89	157.89	157.89	0.00	0.00
49	40mm dia GI pipe	40mm	1 metre	0.01	204.17	166.67	166.67	22.50	22.50
50	15mm GI Pipe	15mm	1 metre	0.01	178.57	157.14	157.14	13.64	13.64
51	GI reducers		No.	0.00	180.18	108.11	100.90	66.67	78.57
<b>8.Sanitary &amp; Water Supply</b>									
52	Indian Water Closet		No.	0.07	143.13	143.13	127.80	0.00	12.00
53	S.W.Gully Trap	6"x4"	No.	0.01	173.91	173.91	160.54	0.00	8.33
54	S.W.Bend	4"	No.	0.01	169.01	169.01	140.85	0.00	20.00
55	GI Pipe 20mm dia Hotwater line	20mm	1 metre	0.11	159.04	139.76	139.76	13.79	13.79
56	Stone ware pipe 100mm	100mm	1 metre	0.39	199.05	199.05	246.45	0.00	-19.23
57	PVC 32mm dia	32mm	1 metre	0.17	178.72	159.57	134.75	12.00	32.63
58	PVC 20mm dia	20mm	1 metre	0.02	221.05	210.53	192.98	5.00	14.55
59	PVC rain water down fall 110mm	110mm	1 metre	0.34	183.67	183.67	117.55	0.00	56.25
60	HDPE Cylindrical		No.	0.62	129.17	116.67	116.67	10.71	10.71
<b>II.Labour cost</b>									
<b>1. Skilled Labour</b>									
61	Mason I & II (Brick Laver I & II Class )		No.	9.92	206.90	193.10	179.31	7.14	15.38
62	Carpenter		No.	0.93	216.67	208.33	208.33	4.00	4.00
63	Painter		No.	1.24	208.70	208.70	180.87	0.00	15.38
64	Fitter I & II		No.	0.76	171.43	171.43	148.57	0.00	15.38
65	Plumber		No.	0.10	210.00	210.00	210.00	0.00	0.00
66	Electrician Gr I & II		No.	0.43	233.33	233.33	200.00	0.00	16.67
<b>2.Unskilled Labour</b>									
67	Mazdoor-men		No.	7.13	210.91	200.00	150.91	5.45	39.76
68	Mazdoor-Women		No.	6.24	220.90	208.96	185.07	5.71	19.35
70	Helper		No.	0.30	239.73	239.73	239.73	0.00	0.00
<b>III.Other expenses</b>									
71	Mixing Charges per mortar		cu.m	1.34	244.90	244.90	179.59	0.00	36.37
72	E.B.Connection charges		No.	0.89	136.83	134.89	127.32	1.44	7.47
73	Contingencies	2.5%		2.22	199.61	192.95	174.31	3.45	14.51
74	Supervision charges	10%		8.89	199.61	192.95	174.31	3.45	14.51
				100.00					35.12



**TABLE - 11**  
**BUILDING CONSTRUCTION COST INDEX**

QUARTER : SEPTEMBER 2021

CENTRE :PUDUKOTTAI

(BASE YEAR:2011-12=100)

Sl. No	ITEM	Weight	INDEX			% Variation	
			Current Quarter Sep 2021	Previous Quarter June 2021	Corresponding Qtr. of prev. year Sep 2020	Previous Quarter June 2021	Corresponding Qtr. of prev. year Sep 2020
<b>I</b>	<b><u>MATERIAL COST</u></b>						
1	BRICKS & TILES	18.93	207.63	194.49	177.18	6.76	17.18
2	SAND, STONE & OTHER QUARRY PRODUCTS	10.13	291.96	279.29	268.98	4.54	8.54
3	CEMENT & LIME	14.36	139.90	149.55	139.85	-6.45	0.04
4	TIMBER & OTHER WOODS	3.32	169.29	161.28	148.72	4.97	13.83
5	IRON & STEEL	6.69	146.08	145.27	123.29	0.56	18.48
6	ANCILLIARY MATERIALS	2.65	205.12	204.62	194.91	0.24	5.24
7	ELECTRICAL FITTINGS	1.80	172.64	168.22	131.77	2.63	31.01
8	SANITARY WARE & WATER SUPPLY	1.73	164.38	156.78	151.21	4.85	8.71
<b>II</b>	<b><u>LABOUR COST</u></b>						
1	SKILLED LABOUR	13.38	206.60	195.79	180.62	5.52	14.38
2	UNSKILLED LABOUR	13.67	216.11	204.97	168.47	5.43	28.28
<b>III</b>	<b><u>OTHER EXPENSES</u></b>						
1	MIXING CHARGES	1.34	244.90	244.90	179.59	0.00	36.37
2	E.B.SERVICE CONNECTION CHARGES	0.89	136.83	134.89	127.32	1.44	7.47
3	CONTINGENCIES	2.22	199.61	192.95	174.31	3.45	14.51
4	SUPERVISION CHARGES	8.89	199.61	192.95	174.31	3.45	14.51
<b>I</b>	<b><i>MATERIAL COST</i></b>	<b>59.62</b>	<b>194.18</b>	<b>189.26</b>	<b>174.82</b>	2.60	11.07
<b>II</b>	<b><i>LABOUR COST</i></b>	<b>27.05</b>	<b>211.40</b>	<b>200.43</b>	<b>174.48</b>	5.48	21.16
<b>III</b>	<b><i>OTHER EXPENSES</i></b>	<b>13.33</b>	<b>199.98</b>	<b>194.30</b>	<b>171.72</b>	2.92	16.46
	<b>BUILDING CONSTRUCTION COST INDEX</b>	<b>100</b>	<b>199.61</b>	<b>192.95</b>	<b>174.31</b>	3.45	14.51

**TABLE - 12A**  
**BUILDING CONSTRUCTION COST INDEX**

Item-wise Cost relative

Quarter : September 2021  
(Base year:2011-12=100)

Centre :Madurai

Sl. No.	Item	Specification	Unit	Weight	COST RELATIVE			% Variation	
					Current Quarter Sep 2021	Previous Quarter June 2021	Corresponding Qtr. of prev. year Sep 2020	Previous Quarter June 2021	Corresponding Qtr. of prev. year Sep 2020
<b>I. Material cost</b>									
<b>1.Bricks and Tiles Products</b>									
1	Bricks	9"x4.5"x2.25"	1000 Nos	18.85	173.68	173.68	142.11	0.00	22.22
2	Brick Jelly	20mm	cu.m	0.50	193.94	193.94	169.69	0.00	14.29
3	Pressed Tiles	9"x9"	1000 Nos	1.58	143.59	128.21	128.21	12.00	12.00
4	Glazes tiles	9"x9"	1 No.	0.12	217.69	217.69	204.08	0.00	6.67
5	Ceramic tiles	9"x9"	1 No.	1.72	158.73	158.73	126.98	0.00	25.00
<b>2.Sand stone and other Quarry Products</b>									
6	Sand for mortar	River	cu.m	3.65	427.58	427.58	413.81	0.00	3.33
7	Stone Jelly (HBSJ)	40mm	cu.m	2.57	183.60	180.33	177.05	1.82	3.70
8	Stone Jelly (HBSJ)	20mm	cu.m	0.37	121.57	117.65	113.73	3.33	6.90
9	Stone Jelly Chips (HBSJ)	10mm	cu.m	1.26	167.65	164.70	158.82	1.79	5.56
10	Rough stone		cu.m	0.42	113.04	113.04	121.74	0.00	-7.14
11	Bond stone		cu.m	0.56	105.26	105.26	103.88	0.00	1.33
<b>3.Cement and Lime</b>									
12	Cement		M.T	12.25	132.26	148.39	129.03	-10.87	2.50
13	Lime stone		cu.m	0.16	168.79	134.10	134.10	25.86	25.86
<b>4.Timber and other wood</b>									
14	TW Frame		sq.m	0.82	115.25	111.86	110.94	3.03	3.89
15	TW Panel door shutter		sq.m	0.80	124.59	124.59	118.63	0.00	5.02
16	Solid PVC door shutter		sq.m	0.43	188.24	188.24	164.71	0.00	14.29
<b>5.Iron and Steel</b>									
17	Mild Steel Rods	10mm	MT	1.39	139.51	135.28	99.35	3.13	40.43
18	Ribbed Tar Steel (RTS)	8mm	MT	2.24	138.78	136.67	100.93	1.54	37.50
19	Binding Wire		Kg	0.48	140.85	140.85	113.32	0.00	24.29
20	Door catch		No.	0.03	120.00	120.00	114.29	0.00	5.00
21	Hold fast		No.	0.03	533.33	533.33	500.00	0.00	6.67
22	Tower bolt receiver		No.	0.02	194.44	194.44	177.78	0.00	9.38
23	Steel window ventilator		Kq	1.32	179.69	179.69	156.25	0.00	15.00
<b>6.Ancillary Materials</b>									
25	Ready mix Prime paint		Ltr	0.11	134.76	123.33	118.57	9.27	13.65
26	Ready mix Synthetic Enamel paint		Ltr	0.05	159.09	154.55	150.00	2.94	6.06
27	Cement paint		Kq	1.64	146.34	146.34	121.95	0.00	20.00
28	Matt paint		Ltr	0.09	118.49	118.49	113.21	0.00	4.67
<b>7.Electrical Fittings</b>									
29	1.5sqmm copper cable		100 metre	0.73	146.03	146.03	130.16	0.00	12.20
30	PVC Pipe	20mm	1metre	0.14	195.12	195.12	173.44	0.00	12.50
31	PVC bend		No.	0.04	500.00	500.00	200.00	0.00	150.00
32	PVC tee		No.	0.02	300.00	300.00	1687.50	0.00	-82.22
33	5amps 5 pin at switch board itself		No.	0.00	112.50	112.50	112.50	0.00	0.00
34	5amps 5 pin non interlocking switch		No.	0.01	138.46	138.46	164.10	0.00	-15.63
35	Ceiling Rose		No.	0.02	147.37	147.37	131.58	0.00	12.00
36	Bakelite pattern Holder		No.	0.02	184.21	184.21	157.89	0.00	16.67
37	Bulk Head Fittings		No.	0.01	375.00	375.00	218.75	0.00	71.43
38	8 SWG GI wire		kg	0.04	153.49	148.84	153.49	3.13	0.00
39	32 amps 500V fuse unit		No.	0.01	133.33	133.33	177.78	0.00	-25.00
40	Junction box		No.	0.04	340.00	340.00	340.00	0.00	0.00
41	Jointbox		No.	0.01	205.26	205.26	184.21	0.00	11.43
42	Hvlem sheet		No.	0.02	121.31	121.31	118.03	0.00	2.78
43	Flush type switch		No.	0.04	133.33	133.33	133.33	0.00	0.00
44	11wCFL bulb	11w	No.	0.01	225.11	225.11	207.79	0.00	8.33
45	Calling bell		No.	0.01	250.00	250.00	208.33	0.00	20.00
46	25amps single phase ELCB		No.	0.15	142.86	142.86	142.86	0.00	0.00
47	25mm GI pipe line	25mm	1 metre	0.06	158.68	158.68	158.68	0.00	0.00
48	GI Pipe 20mm(Earth pit)	20mm	1 metre	0.01	260.20	239.80	209.18	8.51	24.39
49	40mm dia GI pipe	40mm	1 metre	0.01	196.92	196.92	196.92	0.00	0.00
50	15mm GI Pipe	15mm	1 metre	0.01	210.53	192.98	192.98	9.09	9.09
51	GI reducers		No.	0.00	250.00	250.00	200.00	0.00	25.00
<b>8.Sanitary &amp; Water Supply</b>									
52	Indian Water Closet		No.	0.14	168.80	168.80	163.68	0.00	3.13
53	S.W.Gully Trap	6"x4"	No.	0.03	152.38	152.38	152.38	0.00	0.00
54	S.W.Bend	4"	No.	0.01	277.78	277.78	277.78	0.00	0.00
55	GI Pipe 20mm dia Hotwater line	20mm	1 metre	0.12	183.93	183.93	147.86	0.00	24.39
56	Stone ware pipe 100mm	100mm	1 metre	0.32	150.00	150.00	120.00	0.00	25.00
57	PVC 32mm dia	32mm	1 metre	0.14	139.28	139.28	135.70	0.00	2.63
58	PVC 20mm dia	20mm	1 metre	0.02	225.03	214.32	157.17	5.00	43.18
59	PVC rain water down fall 110mm	110mm	1 metre	0.22	163.70	163.70	111.11	0.00	47.33
60	HDPE Cylindrical		No.	0.53	116.67	116.67	111.11	0.00	5.00
<b>II. Labour cost</b>									
<b>1. Skilled Labour</b>									
61	Mason I & II (Brick Layer I & II Class )		No.	10.97	181.33	170.67	149.33	6.25	21.43
62	Carpenter		No.	1.06	187.50	187.50	162.50	0.00	15.38
63	Painter		No.	1.45	190.48	190.48	165.08	0.00	15.38
64	Fitter I & II		No.	0.67	206.90	206.90	179.31	0.00	15.38
65	Plumber		No.	0.11	206.90	206.90	179.31	0.00	15.38
66	Electrician Gr I & II		No.	0.47	183.61	183.61	157.38	0.00	16.67
<b>2.Unskilled Labour</b>									
67	Mazdoor-men		No.	8.04	206.90	206.90	179.31	0.00	15.38
68	Mazdoor-Women		No.	7.76	184.62	184.62	164.10	0.00	12.50
70	Helper		No.	0.27	215.23	215.23	198.68	0.00	8.33
<b>III.Other expenses</b>									
71	Mixing Charges per mortar		cu.m	1.31	457.20	400.05	200.02	14.29	128.57
72	E.B.Connection charges		No.	0.40	227.64	227.64	194.67	0.00	16.94
73	Contingencies	2.5%		2.22	183.82	183.22	158.28	0.33	16.13
74	Supervision charges	10%		8.89	183.82	183.22	158.28	0.33	16.13
				100.00					31.03

**TABLE - 12**  
**BUILDING CONSTRUCTION COST INDEX**

QUARTER : SEPTEMBER 2021

CENTRE : MADURAI

(BASE YEAR:2011-12=100)

Sl. No	ITEM	Weight	INDEX			% Variation	
			Current Quarter Sep 2021	Previous Quarter June 2021	Corresponding Qtr. of prev. year Sep 2020	Previous Quarter June 2021	Corresponding Qtr. of prev. year Sep 2020
<b>I</b>	<b><u>MATERIAL COST</u></b>						
1	BRICKS & TILES	22.76	171.13	170.06	140.91	0.63	21.44
2	SAND, STONE & OTHER QUARRY PRODUCTS	8.83	271.30	269.76	262.44	0.57	3.38
3	CEMENT & LIME	12.41	132.74	148.20	129.10	-10.43	2.82
4	TIMBER & OTHER WOODS	2.05	134.19	132.83	125.21	1.03	7.18
5	IRON & STEEL	5.50	150.91	148.98	117.08	1.29	28.89
6	ANCILLIARY MATERIALS	1.88	144.72	143.96	122.06	0.53	18.56
7	ELECTRICAL FITTINGS	1.42	174.17	173.72	175.42	0.26	-0.71
8	SANITARY WARE & WATER SUPPLY	1.54	146.12	145.98	125.90	0.10	16.06
<b>II</b>	<b><u>LABOUR COST</u></b>						
1	SKILLED LABOUR	14.73	184.10	176.15	153.67	4.51	19.80
2	UNSKILLED LABOUR	16.07	196.27	196.27	172.29	0.00	13.92
<b>III</b>	<b><u>OTHER EXPENSES</u></b>						
1	MIXING CHARGES	1.31	457.20	400.05	200.02	14.29	128.57
2	E.B.SERVICE CONNECTION CHARGES	0.40	227.64	227.64	194.67	0.00	16.94
3	CONTINGENCIES	2.22	183.82	183.22	158.28	0.33	16.13
4	SUPERVISION CHARGES	8.89	183.82	183.22	158.28	0.33	16.13
<b>I</b>	<b><i>MATERIAL COST</i></b>	<b>56.39</b>	<b>173.56</b>	<b>176.01</b>	<b>154.27</b>	-1.39	12.50
<b>II</b>	<b><i>LABOUR COST</i></b>	<b>30.79</b>	<b>190.45</b>	<b>186.65</b>	<b>163.38</b>	2.04	16.57
<b>III</b>	<b><i>OTHER EXPENSES</i></b>	<b>12.82</b>	<b>213.03</b>	<b>206.69</b>	<b>163.68</b>	3.07	30.15
	<b>BUILDING CONSTRUCTION COST INDEX</b>	<b>100</b>	<b>183.82</b>	<b>183.22</b>	<b>158.28</b>	0.33	16.13

**TABLE - 13A**  
**BUILDING CONSTRUCTION COST INDEX**

Item-wise Cost relative

Quarter : September 2021  
(Base year:2011-12=100)

Centre : Virudhunagar

Sl. No.	Item	Specification	Unit	Weight	COST RELATIVE			% Variation	
					Current Quarter Sep 2021	Previous Quarter June 2021	Corresponding Qtr. of prev. year Sep 2020	Previous Quarter June 2021	Corresponding Qtr. of prev. year Sep 2020
<b>I. Material cost</b>									
<b>1.Bricks and Tiles Products</b>									
1	Bricks	9"x4.5"x2.25"	1000 Nos.	14.51	240.24	240.24	216.22	0.00	11.11
2	Brick Jelly	20mm	cu.m	0.41	241.31	241.31	220.70	0.00	9.34
3	Pressed Tiles	9"x9"	1000 Nos.	1.78	160.00	160.00	160.00	0.00	0.00
4	Glazes tiles	9"x9"	1 No.	0.14	408.16	408.16	299.32	0.00	36.36
5	Ceramic tiles	9"x9"	1 No.	2.02	126.98	126.98	126.98	0.00	0.00
<b>2.Sand stone and other Quarry Products</b>									
6	Sand for mortar	River	cu.m	3.28	572.93	572.93	404.49	0.00	41.64
7	Stone Jelly (HBSJ)	40mm	cu.m	3.15	175.00	175.00	175.00	0.00	0.00
8	Stone Jelly (HBSJ)	20mm	cu.m	0.36	139.53	139.53	139.53	0.00	0.00
9	Stone Jelly Chips (HBSJ)	10mm	cu.m	1.30	153.33	153.33	146.67	0.00	4.55
10	Rough stone		cu.m	0.50	121.53	121.53	121.53	0.00	0.00
11	Bond stone		cu.m	0.68	113.92	113.92	101.27	0.00	12.50
<b>3.Cement and Lime</b>									
12	Cement		M.T	14.23	139.84	149.59	139.84	-6.52	0.00
13	Lime stone		cu.m	0.19	128.67	128.67	325.58	0.00	-60.48
<b>4.Timber and other wood</b>									
14	TW Frame		sq.m	0.97	109.42	109.42	107.68	0.00	1.62
15	TW Panel door shutter		sq.m	0.79	216.22	208.49	193.05	3.70	12.00
16	Solid PVC door shutter		sq.m	0.51	171.30	171.30	152.78	0.00	12.12
<b>5.Iron and Steel</b>									
17	Mild Steel Rods	10mm	MT	1.54	143.02	138.55	120.67	3.23	18.52
18	Ribbed Tar Steel (RTS)	8mm	MT	2.36	146.94	142.27	128.28	3.28	14.55
19	Binding Wire		Kq	0.49	184.33	184.33	165.90	0.00	11.11
20	Door catch		No.	0.03	137.50	137.50	125.00	0.00	10.00
21	Hold fast		No.	0.03	533.33	533.33	500.00	0.00	6.67
22	Tower bolt receiver		No.	0.02	246.15	246.15	307.69	0.00	-20.00
23	Steel window ventilator		Kq	1.39	173.91	173.91	166.96	0.00	4.17
<b>6.Ancillary Materials</b>									
25	Ready mix Prime paint		Ltr	0.12	125.00	125.00	120.00	0.00	4.17
26	Ready mix Synthetic Enamel paint		Ltr	0.06	163.64	163.64	145.45	0.00	12.50
27	Cement paint		Kq	2.15	126.09	126.09	119.57	0.00	5.45
28	Matt paint		Ltr	0.11	136.05	136.05	129.25	0.00	5.26
<b>7.Electrical Fittings</b>									
29	1.5sqmm copper cable		100 meter	0.72	108.68	108.68	108.68	0.00	0.00
30	PVC Pipe	20mm	1metre	0.16	200.00	193.30	166.67	3.47	20.00
31	PVC bend		No.	0.05	428.57	428.57	200.00	0.00	114.29
32	PVC tee		No.	0.03	250.00	250.00	250.00	0.00	0.00
33	5amps 5 pin at switch board itself		No.	0.00	185.19	185.19	185.19	0.00	0.00
34	5amps 5 pin non interlocking switch		No.	0.01	116.67	116.67	133.33	0.00	-12.50
35	Ceiling Rose		No.	0.02	178.57	178.57	178.57	0.00	0.00
36	Bakelite pattern Holder		No.	0.02	214.29	214.29	200.00	0.00	7.14
37	Bulk Head Fittings		No.	0.01	230.77	230.77	215.38	0.00	7.14
38	8 SWG GI wire		kq	0.05	154.67	151.11	146.67	2.35	5.45
39	32 amps 500V fuse unit		No.	0.01	117.65	117.65	141.18	0.00	-16.67
40	Junction box		No.	0.03	150.00	150.00	150.00	0.00	0.00
41	Jointbox		No.	0.01	177.42	177.42	177.42	0.00	0.00
42	Hylem sheet		No.	0.02	121.31	121.31	118.03	0.00	2.78
43	Flush type switch		No.	0.05	110.25	110.25	110.25	0.00	0.00
44	11wCFL bulb	11w	No.	0.01	162.50	162.50	150.00	0.00	8.33
45	Calling bell		No.	0.01	266.67	266.67	222.22	0.00	20.00
46	25amps single phase ELCB		No.	0.11	196.08	196.08	196.08	0.00	0.00
47	25mm GI pipe line	25mm	1 metre	0.06	199.13	199.13	190.48	0.00	4.55
48	GI Pipe 20mm(Earth pit)	20mm	1 metre	0.02	176.74	167.44	139.53	5.56	26.67
49	40mm dia GI pipe	40mm	1 metre	0.01	231.29	231.29	231.29	0.00	0.00
50	15mm GI Pipe	15mm	1 metre	0.01	269.84	253.97	253.97	6.25	6.25
51	GI reducers		No.	0.00	173.08	173.08	107.69	0.00	60.71
<b>8.Sanitary &amp; Water Supply</b>									
52	Indian Water Closet		No.	0.10	242.95	242.95	234.27	0.00	3.70
53	S.W.Gully Trap	6"x4"	No.	0.03	145.45	145.45	145.45	0.00	0.00
54	S.W.Bend	4"	No.	0.01	190.48	190.48	190.48	0.00	0.00
55	GI Pipe 20mm dia Hotwater line	20mm	1 metre	0.14	154.13	150.46	121.10	2.44	27.27
56	Stone ware pipe 100mm	100mm	1 metre	0.26	214.29	214.29	214.29	0.00	0.00
57	PVC 32mm dia	32mm	1 metre	0.17	138.30	138.30	134.75	0.00	2.63
58	PVC 20mm dia	20mm	1 metre	0.02	297.30	297.30	198.20	0.00	50.00
59	PVC rain water down fall 110mm	110mm	1 metre	0.34	102.04	102.04	117.55	0.00	-13.19
60	HDPE Cylindrical		No.	0.62	143.06	143.06	141.67	0.00	0.98
<b>II.Labour cost</b>									
<b>1. Skilled Labour</b>									
61	Mason I & II (Brick Layer I & II Class )		No.	10.52	182.41	182.41	182.41	0.00	0.00
62	Carpenter		No.	1.07	202.90	202.90	202.90	0.00	0.00
63	Painter		No.	1.49	202.90	202.90	173.91	0.00	16.67
64	Fitter I & II		No.	0.68	222.22	222.22	190.48	0.00	16.67
65	Plumber		No.	0.11	206.35	206.35	190.48	0.00	8.33
66	Electrician Gr I & II		No.	0.55	157.38	157.38	157.38	0.00	0.00
<b>2.Unskilled Labour</b>									
67	Mazdoor-men		No.	7.59	188.03	188.03	188.03	0.00	0.00
68	Mazdoor-Women		No.	8.58	173.91	173.91	173.91	0.00	0.00
70	Helper		No.	0.31	231.79	231.79	231.79	0.00	0.00
<b>III.Other expenses</b>									
71	Mixing Charges per mortar		cu.m	1.31	165.20	165.20	165.20	0.00	0.00
72	E.B.Connection charges		No.	0.45	171.99	171.99	156.81	0.00	9.68
73	Contingencies	2.5%		2.22	192.13	193.40	179.27	-0.66	7.17
74	Supervision charges	10%		8.89	192.13	193.40	179.27	-0.66	7.17
				100.00					-6.41

**TABLE - 13**  
**BUILDING CONSTRUCTION COST INDEX**

QUARTER : SEPTEMBER 2021

CENTRE : VIRUDHUNAGAR

(BASE YEAR:2011-12=100)

Sl. No	ITEM	Weight	INDEX			% Variation	
			Current Quarter Sep 2021	Previous Quarter June 2021	Corresponding Qtr. of prev. year Sep 2020	Previous Quarter June 2021	Corresponding Qtr. of prev. year Sep 2020
<b>I</b>	<b><u>MATERIAL COST</u></b>						
1	BRICKS & TILES	18.85	221.78	221.78	202.06	0.00	9.76
2	SAND, STONE & OTHER QUARRY PRODUCTS	9.27	303.93	303.93	242.51	0.00	25.33
3	CEMENT & LIME	14.42	139.69	149.32	142.31	-6.45	-1.84
4	TIMBER & OTHER WOODS	2.27	160.65	157.96	147.65	1.71	8.81
5	IRON & STEEL	5.86	157.71	154.65	141.05	1.98	11.81
6	ANCILLIARY MATERIALS	2.44	127.35	127.35	120.62	0.00	5.58
7	ELECTRICAL FITTINGS	1.43	154.36	153.22	140.99	0.74	9.48
8	SANITARY WARE & WATER SUPPL	1.69	154.41	154.10	152.26	0.20	1.41
<b>II</b>	<b><u>LABOUR COST</u></b>						
1	SKILLED LABOUR	14.42	187.17	187.17	182.54	0.00	2.53
2	UNSKILLED LABOUR	16.49	181.52	181.52	181.52	0.00	0.00
<b>III</b>	<b><u>OTHER EXPENSES</u></b>						
1	MIXING CHARGES	1.31	165.20	165.20	165.20	0.00	0.00
2	E.B.SERVICE CONNECTION CHAR	0.45	171.99	171.99	156.81	0.00	9.68
3	CONTINGENCIES	2.22	192.13	193.40	179.27	-0.66	7.17
4	SUPERVISION CHARGES	8.89	192.13	193.40	179.27	-0.66	7.17
<b>I</b>	<b><i>MATERIAL COST</i></b>	<b>56.23</b>	<b>197.30</b>	<b>199.30</b>	<b>178.27</b>	-1.00	10.67
<b>II</b>	<b><i>LABOUR COST</i></b>	<b>30.90</b>	<b>184.15</b>	<b>184.15</b>	<b>182.00</b>	0.00	1.18
<b>III</b>	<b><i>OTHER EXPENSES</i></b>	<b>12.87</b>	<b>188.68</b>	<b>189.78</b>	<b>177.05</b>	-0.58	6.57
	<b>BUILDING CONSTRUCTION COST INDEX</b>	<b>100</b>	<b>192.13</b>	<b>193.40</b>	<b>179.27</b>	-0.66	7.17

**TABLE - 14A**  
**BUILDING CONSTRUCTION COST INDEX**

Item-wise Cost relative

Quarter : September 2021  
(Base year:2011-12=100)

Centre : Palayamkottai

Sl. No.	Item	Specification	Unit	Weight	COST RELATIVE			% Variation	
					Current Quarter Sep 2021	Previous Quarter June 2021	Corresponding Qtr. of prev. year Sep 2020	Previous Quarter June 2021	Corresponding Qtr. of prev. year Sep 2020
<b>I. Material cost</b>									
<b>1.Bricks and Tiles Products</b>									
1	Bricks	9"x4.5"x2.25"	1000 Nos.	18.48	128.70	128.70	120.00	0.00	7.25
2	Brick Jelly	20mm	cu.m	0.52	109.07	109.07	103.40	0.00	5.48
3	Pressed Tiles	9"x9"	1000 Nos.	1.57	133.33	133.33	127.78	0.00	4.35
4	Glazes tiles	9"x9"	1 No.	0.17	250.00	250.00	220.00	0.00	13.64
5	Ceramic tiles	9"x9"	1 No.	0.59	230.00	230.00	220.00	0.00	4.55
<b>2.Sand stone and other Quarry Products</b>									
6	Sand for mortar	River	cu.m	3.02	605.10	585.99	592.36	3.26	2.15
7	Stone Jelly (HBSJ)	40mm	cu.m	2.91	128.32	127.43	125.66	0.69	2.11
8	Stone Jelly (HBSJ)	20mm	cu.m	0.33	102.77	102.77	101.43	0.00	1.32
9	Stone Jelly Chips (HBSJ)	10mm	cu.m	1.37	114.10	114.10	112.44	0.00	1.47
10	Rough stone		cu.m	0.46	191.30	191.30	121.74	0.00	57.14
11	Bond stone		cu.m	0.63	167.62	167.62	152.38	0.00	10.00
<b>3.Cement and Lime</b>									
12	Cement		M.T	13.13	143.09	143.09	133.33	0.00	7.32
13	Lime stone		cu.m	0.14	115.00	115.00	112.50	0.00	2.22
<b>4.Timber and other wood</b>									
14	TW Frame		sq.m	0.92	144.48	133.88	176.76	7.92	-18.26
15	TW Panel door shutter		sq.m	0.97	128.03	128.03	122.20	0.00	4.78
16	Solid PVC door shutter		sq.m	0.65	111.06	106.07	104.26	4.71	6.52
<b>5.Iron and Steel</b>									
17	Mild Steel Rods	10mm	MT	1.53	122.89	117.28	107.94	4.78	13.85
18	Ribbed Tar Steel (RTS)	8mm	MT	2.47	124.33	118.56	109.28	4.87	13.77
19	Binding Wire		Kg	0.57	123.08	117.22	117.22	5.00	5.00
20	Door catch		No.	0.03	264.00	260.00	200.00	1.54	32.00
21	Hold fast		No.	0.12	120.00	115.38	115.38	4.00	4.00
22	Tower bolt receiver		No.	0.04	130.95	123.81	130.95	5.77	0.00
23	Steel window ventilator		Kq	1.31	169.49	169.49	162.71	0.00	4.17
<b>6.Ancillary Materials</b>									
25	Ready mix Prime paint		Ltr	0.11	126.83	131.71	136.59	-3.70	-7.14
26	Ready mix Synthetic Enamel paint		Ltr	0.06	158.33	154.17	154.17	2.70	2.70
27	Cement paint		Kq	1.94	128.89	128.89	122.22	0.00	5.46
28	Matt paint		Ltr	0.10	110.34	108.97	108.97	1.27	1.27
<b>7.Electrical Fittings</b>									
29	1.5sqmm copper cable		100 meter	0.70	148.39	148.39	145.16	0.00	2.22
30	PVC Pipe	20mm	1metre	0.15	280.00	270.00	255.00	3.70	9.80
31	PVC bend		No.	0.05	203.25	189.70	189.70	7.14	7.14
32	PVC tee		No.	0.03	190.93	179.00	179.00	6.67	6.67
33	5amps 5 pin at switch board itself		No.	0.01	123.33	123.33	123.33	0.00	0.00
34	5amps 5 pin non interlocking switch		No.	0.02	123.64	120.00	120.00	3.03	3.03
35	Ceiling Rose		No.	0.02	156.25	150.00	145.83	4.17	7.14
36	Bakelite pattern Holder		No.	0.02	200.00	200.00	181.25	0.00	10.34
37	Bulk Head Fittings		No.	0.01	197.33	189.33	186.67	4.23	5.71
38	8 SWG GI wire		kg	0.04	156.86	147.06	143.14	6.67	9.59
39	32 amps 500V fuse unit		No.	0.01	120.55	120.55	131.51	0.00	-8.33
40	Junction box		No.	0.04	266.67	246.67	240.00	8.11	11.11
41	Jointbox		No.	0.01	119.57	117.39	117.39	1.85	1.85
42	Hvlem sheet		No.	0.02	119.50	119.50	119.50	0.00	0.00
43	Flush type switch		No.	0.05	122.32	116.21	110.09	5.26	11.11
44	11wCFL bulb	11w	No.	0.01	185.00	182.50	150.00	1.37	23.33
45	Calling bell		No.	0.01	131.74	131.74	239.52	0.00	-45.00
46	25amps single phase ELCB		No.	0.26	158.14	136.43	136.43	15.91	15.91
47	25mm GI pipe line	25mm	1 metre	0.06	143.33	133.33	133.33	7.50	7.50
48	GI Pipe 20mm(Earth pit)	20mm	1 metre	0.02	140.00	130.00	130.00	7.69	7.69
49	40mm dia GI pipe	40mm	1 metre	0.01	123.33	123.33	123.33	0.00	0.00
50	15mm GI Pipe	15mm	1 metre	0.01	192.31	192.31	192.31	0.00	0.00
51	GI reducers		No.	0.00	153.33	150.00	150.00	2.22	2.22
<b>8.Sanitary &amp; Water Supply</b>									
52	Indian Water Closet		No.	0.14	144.44	144.44	141.67	0.00	1.96
53	S.W.Gully Trap	6"x4"	No.	0.03	151.52	139.39	133.33	8.70	13.64
54	S.W.Bend	4"	No.	0.01	155.56	150.00	150.00	3.70	3.70
55	GI Pipe 20mm dia Hotwater line	20mm	1 metre	0.12	136.51	126.98	123.02	7.50	10.97
56	Stone ware pipe 100mm	100mm	1 metre	0.26	290.67	266.67	200.00	9.00	45.33
57	PVC 32mm dia	32mm	1 metre	0.15	120.43	118.28	136.20	1.82	-11.58
58	PVC 20mm dia	20mm	1 metre	0.02	240.00	245.33	195.56	-2.17	22.73
59	PVC rain water down fall 110mm	110mm	1 metre	0.31	152.54	138.98	117.15	9.76	30.21
60	HDPE Cylindrical		No.	0.57	152.78	144.44	144.44	5.77	5.77
<b>II. Labour cost</b>									
<b>1. Skilled Labour</b>									
61	Mason I & II (Brick Layer I & II Class )		No.	10.27	209.23	196.92	190.77	6.25	9.68
62	Carpenter		No.	1.11	206.45	187.10	180.65	10.34	14.29
63	Painter		No.	1.34	222.22	207.41	192.59	7.14	15.38
64	Fitter I & II		No.	0.68	222.22	214.81	207.41	3.45	7.14
65	Plumber		No.	0.11	248.28	227.59	220.69	9.09	12.50
66	Electrician Gr I & II		No.	0.45	237.04	222.22	214.81	6.67	10.34
<b>2.Unskilled Labour</b>									
67	Mazdoor-men		No.	7.18	208.33	191.67	183.33	8.70	13.64
68	Mazdoor-Women		No.	8.38	194.87	174.36	164.10	11.76	18.75
70	Helper		No.	0.29	331.13	298.01	251.66	11.11	31.58
<b>III.Other expenses</b>									
71	Mixing Charges per mortar		cu.m	1.21	129.41	117.65	112.94	10.00	14.58
72	E.B.Connection charges		No.	0.54	130.57	130.57	130.57	0.00	0.00
73	Contingencies	2.5%		2.22	176.25	169.12	161.67	4.22	9.02
74	Supervision charges	10%		8.89	176.25	169.12	161.67	4.22	9.02
				100.00					27.58

**TABLE - 14**  
**BUILDING CONSTRUCTION COST INDEX**

QUARTER : SEPTEMBER 2021

CENTRE : PALAYAMKOTTAI

(BASE YEAR:2011-12=100)

Sl. No	ITEM	Weight	INDEX			% Variation	
			Current Quarter Sep 2021	Previous Quarter June 2021	Corresponding Qtr. of prev. year Sep 2020	Previous Quarter June 2021	Corresponding Qtr. of prev. year Sep 2020
<b>I</b>	<b><u>MATERIAL COST</u></b>						
1	BRICKS & TILES	21.34	132.34	132.34	123.75	0.00	6.95
2	SAND, STONE & OTHER QUARRY PRODUCTS	8.72	296.57	289.65	286.21	2.39	3.62
3	CEMENT & LIME	13.27	142.79	142.79	133.11	0.00	7.27
4	TIMBER & OTHER WOODS	2.54	129.65	124.52	137.38	4.11	-5.63
5	IRON & STEEL	6.08	134.29	129.82	121.97	3.44	10.10
6	ANCILLIARY MATERIALS	2.21	128.67	128.75	123.15	-0.06	4.48
7	ELECTRICAL FITTINGS	1.55	167.25	160.42	157.03	4.26	6.51
8	SANITARY WARE & WATER SUPPLY	1.62	170.76	160.26	145.87	6.56	17.06
<b>II</b>	<b><u>LABOUR COST</u></b>						
1	SKILLED LABOUR	13.96	212.10	199.08	191.96	6.54	10.49
2	UNSKILLED LABOUR	15.86	203.46	184.46	174.42	10.30	16.65
<b>III</b>	<b><u>OTHER EXPENSES</u></b>						
1	MIXING CHARGES	1.21	129.41	117.65	112.94	10.00	14.58
2	E.B.SERVICE CONNECTION CHARGES	0.54	130.57	130.57	130.57	0.00	0.00
3	CONTINGENCIES	2.22	176.44	169.41	161.98	4.15	8.93
4	SUPERVISION CHARGES	8.89	176.44	169.41	161.98	4.15	8.93
<b>I</b>	<b><i>MATERIAL COST</i></b>	<b>57.32</b>	<b>161.71</b>	<b>159.48</b>	<b>152.54</b>	1.40	6.01
<b>II</b>	<b><i>LABOUR COST</i></b>	<b>29.82</b>	<b>207.50</b>	<b>191.30</b>	<b>182.63</b>	8.47	13.62
<b>III</b>	<b><i>OTHER EXPENSES</i></b>	<b>12.86</b>	<b>170.10</b>	<b>162.91</b>	<b>156.03</b>	4.41	9.02
	<b>BUILDING CONSTRUCTION COST INDEX</b>	<b>100</b>	<b>176.44</b>	<b>169.41</b>	<b>161.96</b>	4.15	8.94

**TABLE - 15A**  
**BUILDING CONSTRUCTION COST INDEX**

Item-wise Cost relative

Quarter : September 2021  
(Base year:2011-12=100)

Centre :Nagercoil

Sl. No.	Item	Specification	Unit	Weight	COST RELATIVE			% Variation	
					Current Quarter Sep 2021	Previous Quarter June 2021	Corresponding Qtr. of prev. year Sep 2020	Previous Quarter June 2021	Corresponding Qtr. of prev. year Sep 2020
<b>I. Material cost</b>									
<b>1.Bricks and Tiles Products</b>									
1	Bricks	9"x4.5"x2.25"	1000 Nos.	15.35	130.23	130.23	120.93	0.00	7.69
2	Brick Jelly	20mm	cu.m	0.40	198.22	181.23	141.59	9.38	40.00
3	Pressed Tiles	9"x9"	1000 Nos.	0.93	150.00	150.00	145.83	0.00	2.86
4	Glazes tiles	9"x9"	1 No.	0.15	160.00	160.00	150.00	0.00	6.67
5	Ceramic tiles	9"x9"	1 No.	0.67	250.98	250.98	235.29	0.00	6.67
<b>2.Sand stone and other Quarry Products</b>									
6	Sand for mortar	River	cu.m	2.69	611.46	611.46	592.36	0.00	3.23
7	Stone Jelly (HBSJ)	40mm	cu.m	3.03	211.48	211.48	211.48	0.00	0.00
8	Stone Jelly (HBSJ)	20mm	cu.m	0.31	176.21	176.21	176.21	0.00	0.00
9	Stone Jelly Chips (HBSJ)	10mm	cu.m	1.34	211.48	211.48	211.48	0.00	0.00
10	Rough stone		cu.m	0.41	153.85	153.85	151.57	0.00	1.50
11	Bond stone		cu.m	0.56	150.00	150.00	140.00	0.00	7.14
<b>3.Cement and Lime</b>									
12	Cement		M.T	11.57	142.62	147.54	134.43	-3.33	6.10
13	Lime stone		cu.m	0.16	139.82	139.82	134.75	0.00	3.77
<b>4.Timber and other wood</b>									
14	TW Frame		sq.m	0.88	335.42	335.42	301.88	0.00	11.11
15	TW Panel door shutter		sq.m	1.50	111.52	111.52	106.21	0.00	5.00
16	Solid PVC door shutter		sq.m	0.56	145.58	145.58	145.58	0.00	0.00
<b>5.Iron and Steel</b>									
17	Mild Steel Rods	10mm	MT	1.35	142.80	129.44	125.26	10.32	14.00
18	Ribbed Tar Steel (RTS)	8mm	MT	2.20	141.98	135.80	119.34	4.55	18.97
19	Binding Wire		Kg	0.48	154.09	140.08	116.73	10.00	32.00
20	Door catch		No.	0.03	300.00	300.00	250.00	0.00	20.00
21	Hold fast		No.	0.10	116.67	116.67	100.00	0.00	16.67
22	Tower bolt receiver		No.	0.05	277.78	277.78	259.26	0.00	7.14
23	Steel window ventilator		Kg	1.27	179.69	179.69	164.06	0.00	9.52
<b>6.Ancillary Materials</b>									
25	Ready mix Prime paint		Ltr	0.11	128.44	119.27	119.27	7.69	7.69
26	Ready mix Synthetic Enamel paint		Ltr	0.05	154.55	163.64	163.64	-5.56	-5.56
27	Cement paint		Kg	1.92	120.00	120.00	116.00	0.00	3.45
28	Matt paint		Ltr	0.09	113.33	113.33	106.67	0.00	6.25
<b>7.Electrical Fittings</b>									
29	1.5sqmm copper cable		100 meter	0.40	257.24	257.24	184.73	0.00	39.25
30	PVC Pipe	20mm	1metre	0.13	500.00	500.00	500.00	0.00	0.00
31	PVC bend		No.	0.04	214.29	200.00	200.00	7.14	7.14
32	PVC tee		No.	0.02	200.00	200.00	187.50	0.00	6.67
33	5amps 5 pin at switch board itself		No.	0.00	142.86	142.86	142.86	0.00	0.00
34	5amps 5 pin non interlocking switch		No.	0.01	150.00	150.00	150.00	0.00	0.00
35	Ceiling Rose		No.	0.02	142.86	142.86	128.57	0.00	11.11
36	Bakelite pattern Holder		No.	0.02	135.00	135.00	135.00	0.00	0.00
37	Bulk Head Fittings		No.	0.01	220.00	220.00	220.00	0.00	0.00
38	8 SWG GI wire		kg	0.03	207.79	194.81	155.84	6.67	33.33
39	32 amps 500V fuse unit		No.	0.01	144.44	144.44	144.44	0.00	0.00
40	Junction box		No.	0.02	150.00	150.00	150.00	0.00	0.00
41	Jointbox		No.	0.01	267.86	267.86	267.86	0.00	0.00
42	Hylem sheet		No.	0.02	180.86	180.86	180.86	0.00	0.00
43	Flush type switch		No.	0.03	133.33	133.33	133.33	0.00	0.00
44	11wCFL bulb	11w	No.	0.01	200.00	200.00	166.67	0.00	20.00
45	Calling bell		No.	0.01	208.00	208.00	176.00	0.00	18.18
46	25amps single phase ELCB		No.	0.15	147.62	147.62	147.62	0.00	0.00
47	25mm GI pipe line	25mm	1 metre	0.04	222.45	222.45	222.45	0.00	0.00
48	GI Pipe 20mm(Earth pit)	20mm	1 metre	0.01	119.32	119.32	119.32	0.00	0.00
49	40mm dia GI pipe	40mm	1 metre	0.01	179.23	179.23	179.23	0.00	0.00
50	15mm GI Pipe	15mm	1 metre	0.01	298.08	298.08	298.08	0.00	0.00
51	GI reducers		No.	0.00	120.00	120.00	120.00	0.00	0.00
<b>8.Sanitary &amp; Water Supply</b>									
52	Indian Water Closet		No.	0.08	157.21	157.21	148.47	0.00	5.88
53	S.W.Gully Trap	6"x4"	No.	0.01	288.89	288.89	244.44	0.00	18.18
54	S.W.Bend	4"	No.	0.01	233.77	233.77	166.23	0.00	40.63
55	GI Pipe 20mm dia Hotwater line	20mm	1 metre	0.09	169.46	169.46	123.15	0.00	37.60
56	Stone ware pipe 100mm	100mm	1 metre	0.20	323.08	323.08	282.05	0.00	14.55
57	PVC 32mm dia	32mm	1 metre	0.13	257.78	257.78	257.78	0.00	0.00
58	PVC 20mm dia	20mm	1 metre	0.02	416.26	416.26	416.26	0.00	0.00
59	PVC rain water down fall 110mm	110mm	1 metre	0.20	236.23	236.23	205.99	0.00	14.68
60	HDPE Cylindrical		No.	0.51	230.56	230.56	225.00	0.00	2.47
<b>II.Labour cost</b>									
<b>1. Skilled Labour</b>									
61	Mason I & II (Brick Layer I & II Class )		No.	10.11	200.00	200.00	177.78	0.00	12.50
62	Carpenter		No.	1.14	200.00	200.00	166.67	0.00	20.00
63	Painter		No.	1.59	188.89	188.89	166.67	0.00	13.33
64	Fitter I & II		No.	0.82	194.59	194.59	172.97	0.00	12.50
65	Plumber		No.	0.13	194.59	194.59	172.97	0.00	12.50
66	Electrician Gr I & II		No.	0.53	200.00	200.00	177.78	0.00	12.50
<b>2.Unskilled Labour</b>									
67	Mazdoor-men		No.	8.51	187.50	187.50	162.50	0.00	15.38
68	Mazdoor-Women		No.	12.23	175.00	175.00	162.50	0.00	7.69
70	Helper		No.	0.55	230.77	230.77	200.00	0.00	15.38
<b>III.Other expenses</b>									
71	Mixing Charges per mortar		cu.m	2.03	225.00	225.00	200.00	0.00	12.50
72	E.B.Connection charges		No.	0.82	153.94	153.94	135.18	0.00	13.88
73	Contingencies	2.5%		2.22	183.86	183.98	168.88	-0.07	8.87
74	Supervision charges	10%		8.89	183.86	183.98	168.88	-0.07	8.87
				100.00					13.96



**TABLE - 15**  
**BUILDING CONSTRUCTION COST INDEX**

QUARTER : SEPTEMBER 2021  
(BASE YEAR:2011-12=100)

CENTRE : NAGERCOIL

Sl. No	ITEM	Weight	INDEX			% Variation	
			Current Quarter Sep 2021	Previous Quarter June 2021	Corresponding Qtr. of prev. year Sep 2020	Previous Quarter June 2021	Corresponding Qtr. of prev. year Sep 2020
<b>I</b>	<b><u>MATERIAL COST</u></b>						
1	BRICKS & TILES	17.54	137.73	137.34	127.36	0.28	8.14
2	SAND, STONE & OTHER QUARRY PRODUCTS	8.33	331.99	331.99	325.04	0.00	2.14
3	CEMENT & LIME	11.72	142.59	147.44	134.43	-3.29	6.07
4	TIMBER & OTHER WOODS	2.94	184.93	184.93	172.19	0.00	7.40
5	IRON & STEEL	5.46	153.45	146.44	132.42	4.79	15.88
6	ANCILLIARY MATERIALS	2.16	120.85	120.59	116.76	0.22	3.50
7	ELECTRICAL FITTINGS	1.02	248.63	247.72	216.85	0.37	14.66
8	SANITARY WARE & WATER SUPPLY	1.25	243.30	243.30	224.71	0.00	8.27
<b>II</b>	<b><u>LABOUR COST</u></b>						
1	SKILLED LABOUR	14.32	198.41	198.41	175.34	0.00	13.16
2	UNSKILLED LABOUR	21.28	181.45	181.45	163.48	0.00	10.99
<b>III</b>	<b><u>OTHER EXPENSES</u></b>						
1	MIXING CHARGES	2.03	225.00	225.00	200.00	0.00	12.50
2	E.B.SERVICE CONNECTION CHARGES	0.82	153.94	153.94	135.18	0.00	13.88
3	CONTINGENCIES	2.22	183.86	183.98	168.88	-0.07	8.87
4	SUPERVISION CHARGES	8.89	183.86	183.98	168.88	-0.07	8.87
<b>I</b>	<b><i>MATERIAL COST</i></b>	<b>50.44</b>	<b>179.58</b>	<b>179.79</b>	<b>168.63</b>	-0.12	6.49
<b>II</b>	<b><i>LABOUR COST</i></b>	<b>35.60</b>	<b>188.27</b>	<b>188.27</b>	<b>168.25</b>	0.00	11.90
<b>III</b>	<b><i>OTHER EXPENSES</i></b>	<b>13.96</b>	<b>188.07</b>	<b>188.17</b>	<b>171.42</b>	-0.05	9.71
	<b>BUILDING CONSTRUCTION COST INDEX</b>	<b>100</b>	<b>183.86</b>	<b>183.98</b>	<b>168.88</b>	-0.07	8.87

**TABLE - 16A**  
**BUILDING CONSTRUCTION COST INDEX**

Item-wise Cost relative

Quarter : September 2021  
(Base year:2011-12=100)

Centre : Udhagamandalam

Sl. No.	Item	Specification	Unit	Weight	COST RELATIVE			% Variation	
					Current Quarter Sep 2021	Previous Quarter June 2021	Corresponding Qtr. of prev. year Sep 2020	Previous Quarter June 2021	Corresponding Qtr. of prev. year Sep 2020
<b>I. Material cost</b>									
<b>1.Bricks and Tiles Products</b>									
1	Bricks	9"x4.5"x2.25"	1000 Nos.	21.50	150.00	150.00	118.75	0.00	26.32
2	Brick Jelly	20mm	cu.m	0.00	0.00	0.00	0.00	0.00	0.00
3	Pressed Tiles	9"x9"	1000 Nos.	1.53	190.48	190.48	161.90	0.00	17.65
4	Glazes tiles	9"x9"	1 No.	0.12	535.71	535.71	261.90	0.00	104.55
5	Ceramic tiles	9"x9"	1 No.	0.79	312.50	312.50	250.00	0.00	25.00
<b>2.Sand stone and other Quarry Products</b>									
6	Sand for mortar	River	cu.m	2.83	216.14	216.14	275.59	0.00	-21.57
7	Stone Jelly (HBSJ)	40mm	cu.m	3.68	214.99	214.99	164.34	0.00	30.82
8	Stone Jelly (HBSJ)	20mm	cu.m	0.38	179.56	179.56	179.59	0.00	-0.02
9	Stone Jelly Chips (HBSJ)	10mm	cu.m	1.97	186.87	186.87	179.88	0.00	3.88
10	Rough stone		cu.m	0.00	0.00	0.00	0.00	0.00	0.00
11	Bond stone		cu.m	0.00	0.00	0.00	0.00	0.00	0.00
<b>3.Cement and Lime</b>									
12	Cement		M.T	11.47	140.08	143.19	133.85	-2.17	4.65
13	Lime stone		cu.m	0.30	151.62	151.62	151.62	0.00	0.00
<b>4.Timber and other wood</b>									
14	TW Frame		sq.m	1.59	142.86	142.86	128.57	0.00	11.11
15	TW Panel door shutter		sq.m	0.96	107.94	107.94	104.92	0.00	2.88
16	Solid PVC door shutter		sq.m	0.39	125.52	125.46	121.14	0.05	3.62
<b>5.Iron and Steel</b>									
17	Mild Steel Rods	10mm	MT	1.25	149.09	149.09	106.50	0.00	40.00
18	Ribbed Tar Steel (RTS)	8mm	MT	1.98	150.70	150.70	111.95	0.00	34.62
19	Binding Wire		Kg	0.48	145.45	145.45	116.36	0.00	25.00
20	Door catch		No.	0.02	200.00	200.00	178.57	0.00	12.00
21	Hold fast		No.	0.05	250.00	250.00	234.38	0.00	6.67
22	Tower bolt receiver		No.	0.05	150.00	150.00	116.67	0.00	28.57
23	Steel window ventilator		Kq	1.25	194.03	194.03	179.10	0.00	8.33
<b>6.Ancillary Materials</b>									
25	Ready mix Prime paint		Ltr	0.10	184.33	184.33	133.64	0.00	37.93
26	Ready mix Synthetic Enamel paint		Ltr	0.05	161.29	161.29	217.74	0.00	-25.93
27	Cement paint		Kq	1.73	156.25	156.25	145.83	0.00	7.14
28	Matt paint		Ltr	0.16	120.88	120.88	109.89	0.00	10.00
<b>7.Electrical Fittings</b>									
29	1.5sqmm copper cable		100 meter	0.69	151.53	134.02	133.33	13.06	13.65
30	PVC Pipe	20mm	1metre	0.07	364.30	364.30	348.51	0.00	4.53
31	PVC bend		No.	0.03	200.00	200.00	194.44	0.00	2.86
32	PVC tee		No.	0.02	225.00	225.00	233.33	0.00	-3.57
33	5amps 5 pin at switch board itself		No.	0.01	150.00	150.00	133.33	0.00	12.50
34	5amps 5 pin non interlocking switch		No.	0.01	200.00	200.00	160.00	0.00	25.00
35	Ceiling Rose		No.	0.03	116.67	116.67	116.67	0.00	0.00
36	Bakelite pattern Holder		No.	0.03	240.00	240.00	176.00	0.00	36.36
37	Bulk Head Fittings		No.	0.01	350.45	350.45	229.61	0.00	52.63
38	8 SWG GI wire		kq	0.05	128.30	120.75	147.92	6.25	-13.27
39	32 amps 500V fuse unit		No.	0.01	194.12	194.12	141.18	0.00	37.50
40	Junction box		No.	0.09	120.00	120.00	120.00	0.00	0.00
41	Jointbox		No.	0.02	275.00	275.00	200.00	0.00	37.50
42	Hvlem sheet		No.	0.02	118.03	118.03	118.03	0.00	0.00
43	Flush type switch		No.	0.04	162.13	162.13	116.73	0.00	38.89
44	11wCFL bulb	11w	No.	0.01	216.67	216.67	200.00	0.00	8.33
45	Calling bell		No.	0.01	333.33	333.33	222.22	0.00	50.00
46	25amps single phase ELCB		No.	0.08	152.00	152.00	152.00	0.00	0.00
47	25mm GI pipe line	25mm	1 metre	0.05	253.63	253.04	180.87	0.23	40.23
48	GI Pipe 20mm(Earth pit)	20mm	1 metre	0.01	188.53	188.24	177.98	0.16	5.93
49	40mm dia GI pipe	40mm	1 metre	0.01	215.23	215.23	198.68	0.00	8.33
50	15mm GI Pipe	15mm	1 metre	0.01	400.00	400.00	400.00	0.00	0.00
51	GI reducers		No.	0.00	175.68	175.68	175.68	0.00	0.00
<b>8.Sanitary &amp; Water Supply</b>									
52	Indian Water Closet		No.	0.07	145.45	145.45	136.36	0.00	6.67
53	S.W.Gully Trap	6"x4"	No.	0.02	260.00	260.00	200.00	0.00	30.00
54	S.W.Bend	4"	No.	0.01	142.86	142.86	119.05	0.00	20.00
55	GI Pipe 20mm dia Hotwater line	20mm	1 metre	0.09	233.48	233.78	213.57	-0.13	9.32
56	Stone ware pipe 100mm	100mm	1 metre	0.30	198.10	198.41	114.29	-0.16	73.33
57	PVC 32mm dia	32mm	1 metre	0.13	195.04	195.04	134.75	0.00	44.74
58	PVC 20mm dia	20mm	1 metre	0.01	405.41	405.41	198.20	0.00	104.55
59	PVC rain water down fall 110mm	110mm	1 metre	0.26	147.39	146.94	85.03	0.31	73.34
60	HDPE Cylindrical		No.	0.48	250.00	250.00	230.56	0.00	8.43
<b>II.Labour cost</b>									
<b>1. Skilled Labour</b>									
61	Mason I & II (Brick Layer I & II Class )		No.	10.18	197.40	197.40	187.01	0.00	5.56
62	Carpenter		No.	1.12	192.00	192.00	181.33	0.00	5.88
63	Painter		No.	1.54	183.78	183.78	172.97	0.00	6.25
64	Fitter I & II		No.	0.75	211.11	211.11	200.00	0.00	5.56
65	Plumber		No.	0.12	192.00	181.33	170.67	5.88	12.50
66	Electrician Gr I & II		No.	0.52	192.00	181.33	170.67	5.88	12.50
<b>2.Unskilled Labour</b>									
67	Mazdoor-men		No.	6.88	203.64	203.64	189.09	0.00	7.69
68	Mazdoor-Women		No.	7.91	254.55	163.64	145.45	55.56	75.00
70	Helper		No.	0.40	190.00	190.00	164.00	0.00	15.85
<b>III.Other expenses</b>									
71	Mixing Charges per mortar		cu.m	1.61	151.11	151.11	151.11	0.00	0.00
72	E.B.Connection charges		No.	0.57	174.48	174.48	187.34	0.00	-6.86
73	Contingencies	2.5%		2.22	183.00	175.09	170.36	4.52	7.42
74	Supervision charges	10%		8.89	183.00	175.09	170.36	4.52	7.42
				100.00					47.23

**TABLE - 16**  
**BUILDING CONSTRUCTION COST INDEX**

QUARTER : SEPTEMBER 2021  
(BASE YEAR:2011-12=100)

CENTRE : UDHAGAMANDALAM

Sl. No	ITEM	Weight	INDEX			% Variation	
			Current Quarter Sep 2021	Previous Quarter June 2021	Corresponding Qtr. of prev. year Sep 2020	Previous Quarter June 2021	Corresponding Qtr. of prev. year Sep 2020
<b>I</b>	<b><u>MATERIAL COST</u></b>						
1	BRICKS & TILES	23.58	159.90	159.90	126.57	0.00	26.33
2	SAND, STONE & OTHER QUARRY PRODUCTS	10.09	241.09	241.09	372.44	0.00	-35.27
3	CEMENT & LIME	11.59	140.38	143.41	134.31	-2.11	4.52
4	TIMBER & OTHER WOODS	2.90	129.15	129.14	119.85	0.01	7.75
5	IRON & STEEL	4.99	161.66	161.66	129.09	0.00	25.23
6	ANCILLIARY MATERIALS	2.01	154.95	154.95	144.10	0.00	7.53
7	ELECTRICAL FITTINGS	1.26	174.61	164.88	155.67	5.90	12.16
8	SANITARY WARE & WATER SUPPLY	1.35	208.28	208.28	166.85	0.00	24.83
<b>II</b>	<b><u>LABOUR COST</u></b>						
1	SKILLED LABOUR	14.01	195.99	195.51	185.00	0.25	5.94
2	UNSKILLED LABOUR	14.96	229.78	182.45	165.71	25.94	38.66
<b>III</b>	<b><u>OTHER EXPENSES</u></b>						
1	MIXING CHARGES	1.59	151.11	151.11	151.11	0.00	0.00
2	E.B.SERVICE CONNECTION CHARGES	0.56	174.48	174.48	187.34	0.00	-6.86
3	CONTINGENCIES	2.22	183.00	175.09	170.36	4.51	7.42
4	SUPERVISION CHARGES	8.89	183.00	175.09	170.36	4.51	7.42
<b>I</b>	<b><i>MATERIAL COST</i></b>	<b>57.77</b>	<b>168.34</b>	<b>168.75</b>	<b>168.33</b>	-0.24	0.01
<b>II</b>	<b><i>LABOUR COST</i></b>	<b>28.98</b>	<b>213.44</b>	<b>188.77</b>	<b>175.04</b>	13.07	21.94
<b>III</b>	<b><i>OTHER EXPENSES</i></b>	<b>13.25</b>	<b>178.77</b>	<b>172.16</b>	<b>168.75</b>	3.84	5.94
	<b>BUILDING CONSTRUCTION COST INDEX</b>	<b>100</b>	<b>183.00</b>	<b>175.09</b>	<b>170.36</b>	4.51	7.42